

Reference scale in cm

Leading edge 1.6 x 2.4 mm strip

Trailing edge 1.6 x 5.1 mm strip

Tailplane outline and spar  
from 1.6mm square.  
Ribs from 1.6 x 0.8mm.

10mm dihedral



Tail fin out  
from 1.6  
Ribs from

0.8mm sheeting  
on top of nose

F4 1.6mm

F5

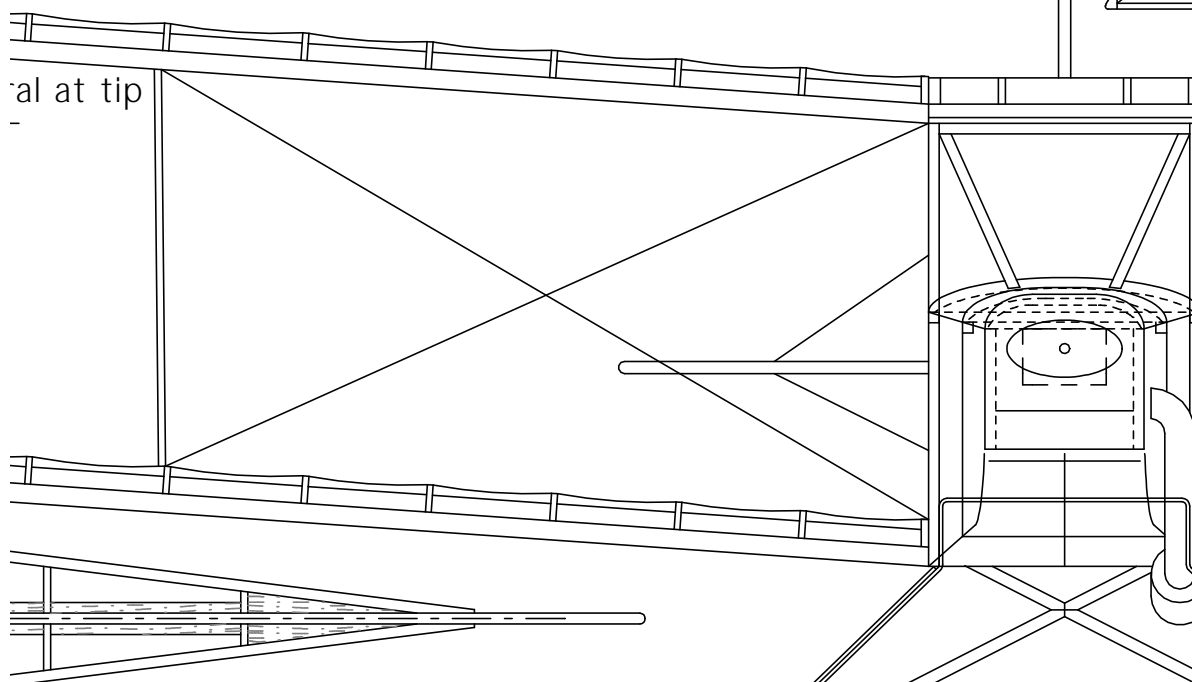
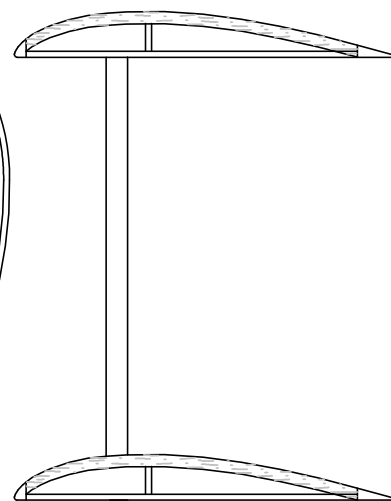
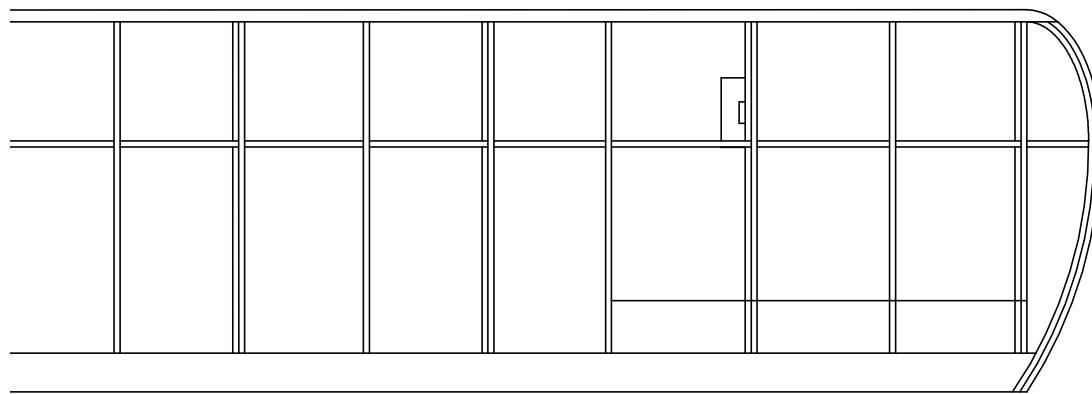
Fuselage struct  
from 1.6mm squ

F5 2.4mm sheet

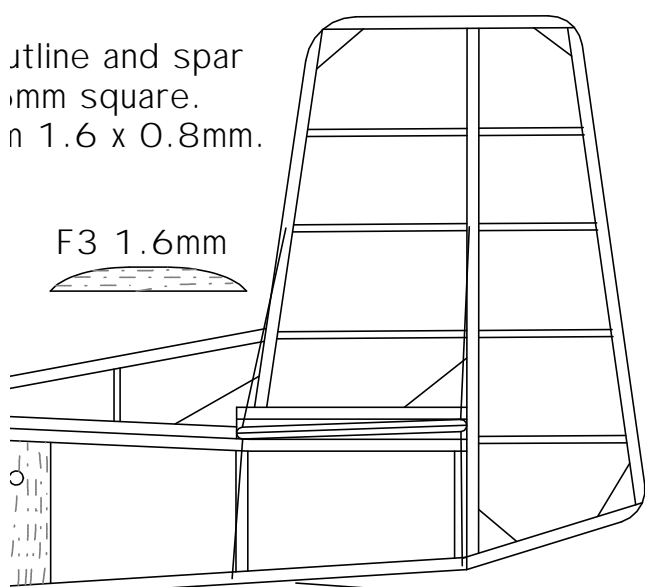
Undercarriage  
fairing (2 off)  
0.8mm sheet

125mm (5") prop

Clear glazing in middle section only

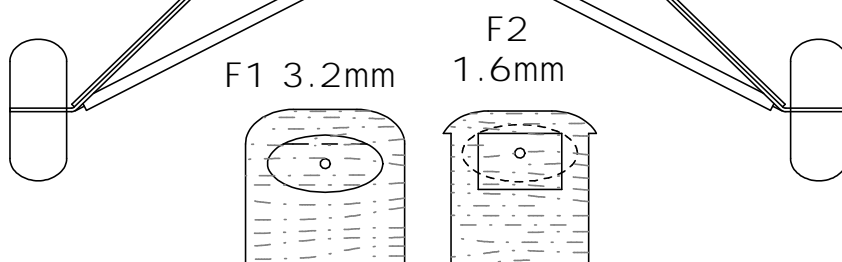


Colour scheme:  
Overall:  
Silver  
Wing tips:  
Gold  
Fin & rudder  
outline:  
Gold  
Muffler:  
Black  
Prop:  
Wood



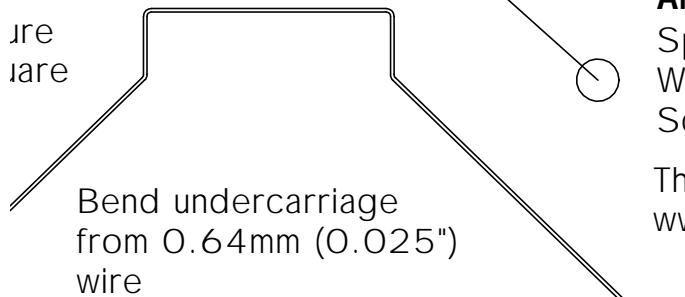
Outline and spar  
1.6mm square.  
1.6 x 0.8mm.

F3 1.6mm



F1 3.2mm

F2 1.6mm



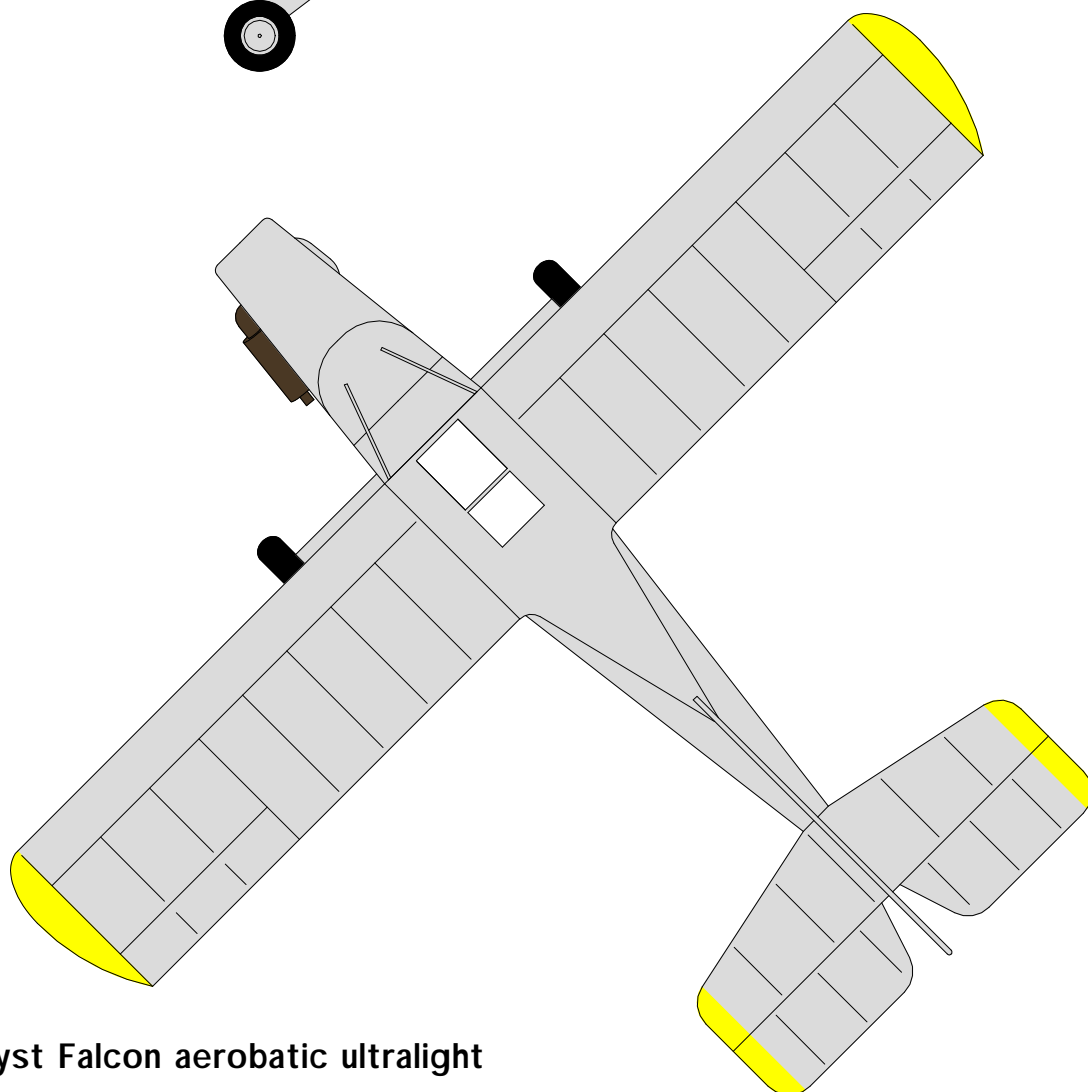
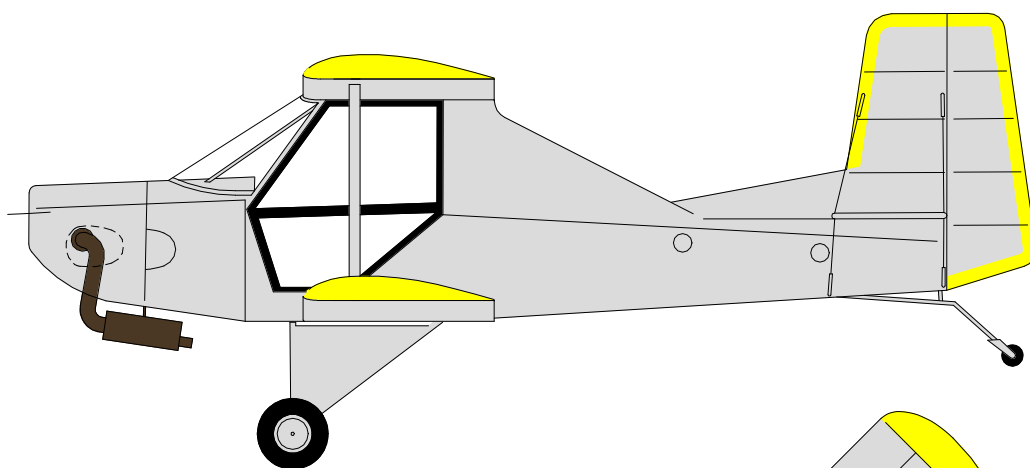
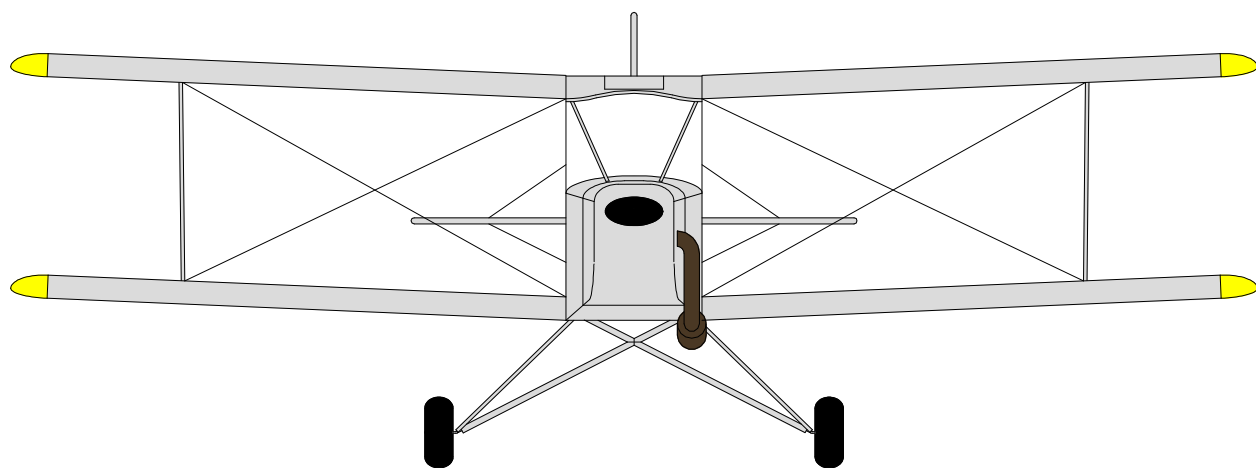
Bend undercarriage  
from 0.64mm (0.025")  
wire

### Amethyst Falcon aerobatic ultralight Peanut Scale

Span:	13 in	330 mm
Wing area:	50.7 in	32.8 sq dm
Scale:	1 : 16.6	

This plan downloaded from Small Flying Arts!  
[www.smallflyingarts.com](http://www.smallflyingarts.com)

© D Buckmaster 2001



**Amethyst Falcon aerobatic ultralight**

© D Buckmaster 2003