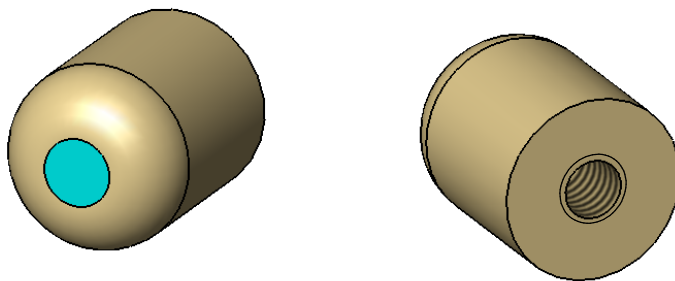
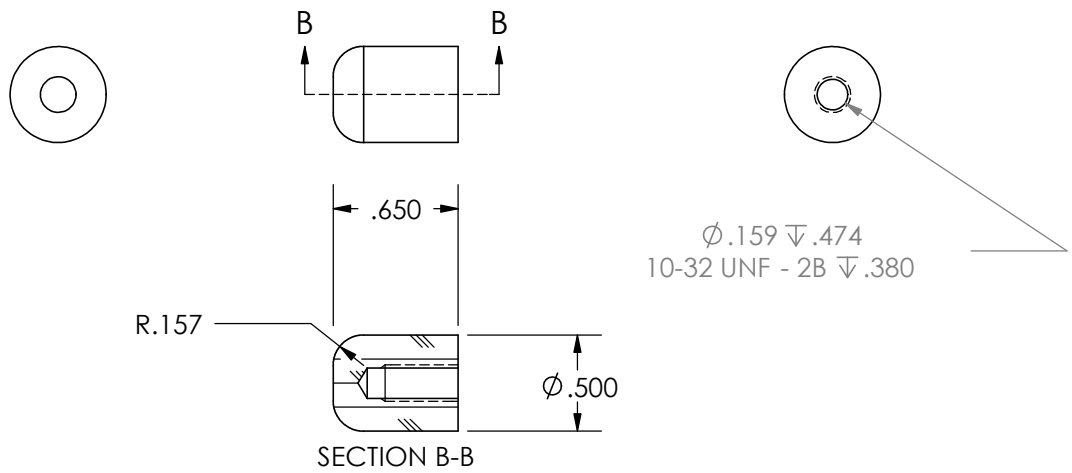
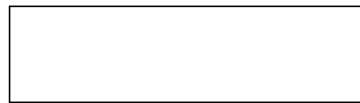
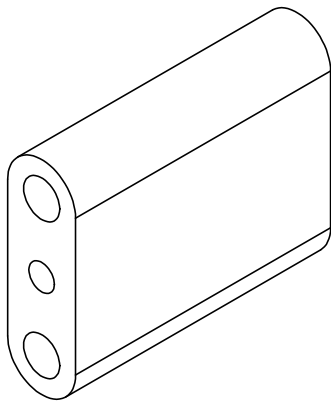
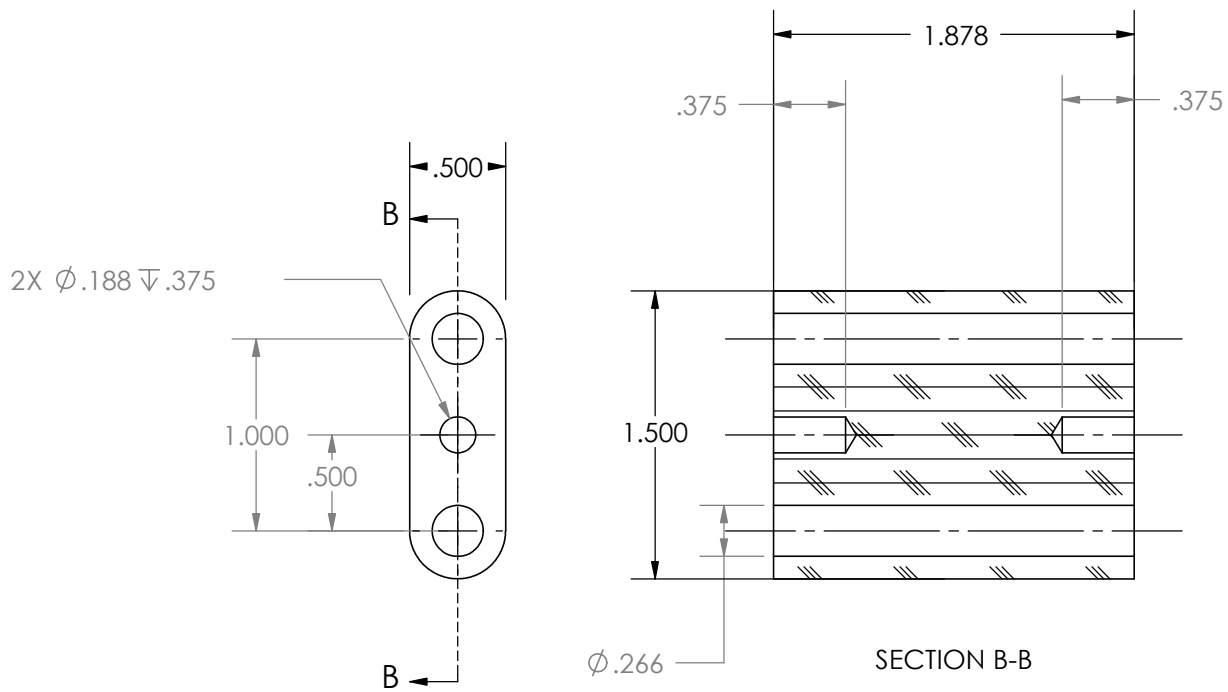


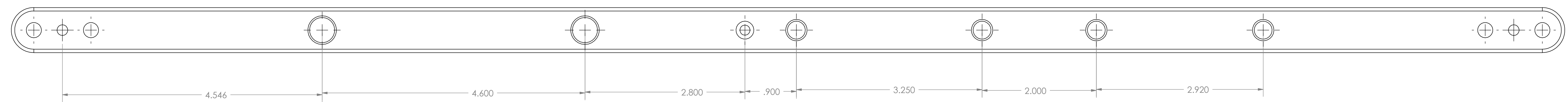
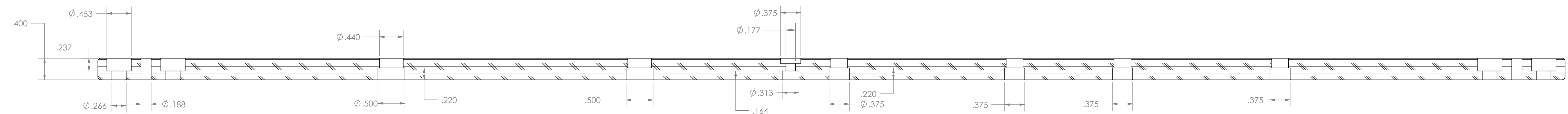
| | | | |
|---|---|--|-------------------------------|
| 1 | prelim release | 14-Oct-04 | |
| REV | Description | DATE | |
| MATERIAL Steel FINISH Black Oxide DRAWN by: G Mahony DATE Drawn: 14-Oct-04 | Inch Dimensions | <div style="text-align: center;"> 1.000 1.000 </div> | DESCRIPTION pivot-pendulum |
| | Tolerances $\pm .015$ " typ | | Project Clock 2003 |
| | OK to scale drawing if box on right is to scale | | Drawing # P-C03-0003 |
| | Third Angle Projection | | Page 1 of 1 |



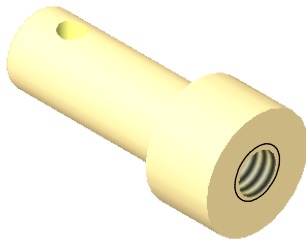
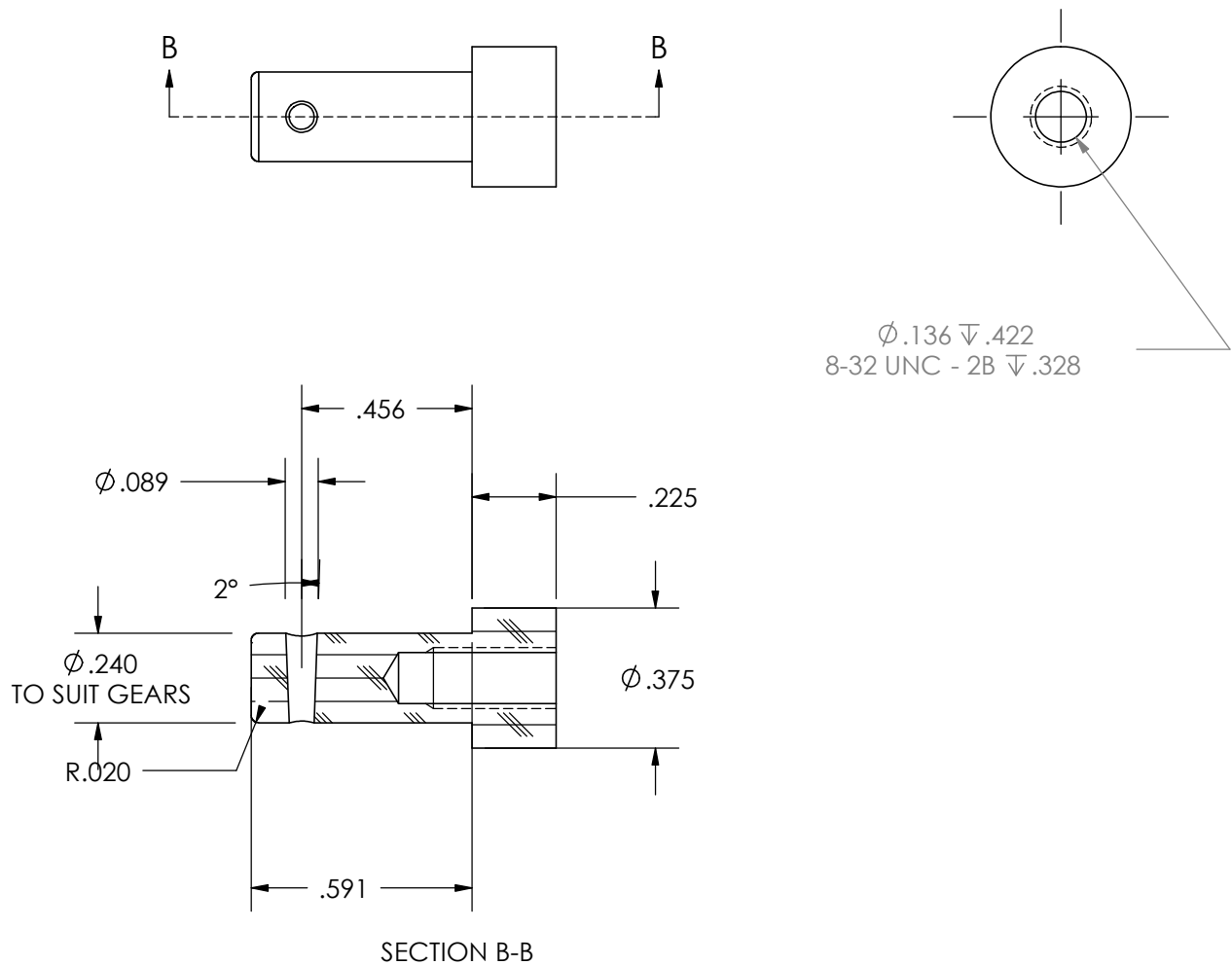
| | | |
|-----------------------|---|-------------------------------------|
| 1 | prelim release | 14-Oct-04 |
| REV | Description | DATE |
| MATERIAL Wood | Inch Dimensions Tolerances $\pm .015"$ typ | DESCRIPTION safety-pendulum-stop |
| FINISH Oil | OK to scale drawing if box on right is to scale | Project Clock 2003 |
| DRAWN by: G Mahony | Third Angle Projection | Drawing # P-C03-0004 |
| DATE Drawn: 14-Oct-04 | | Page 1 of 1 |



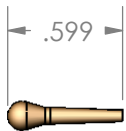
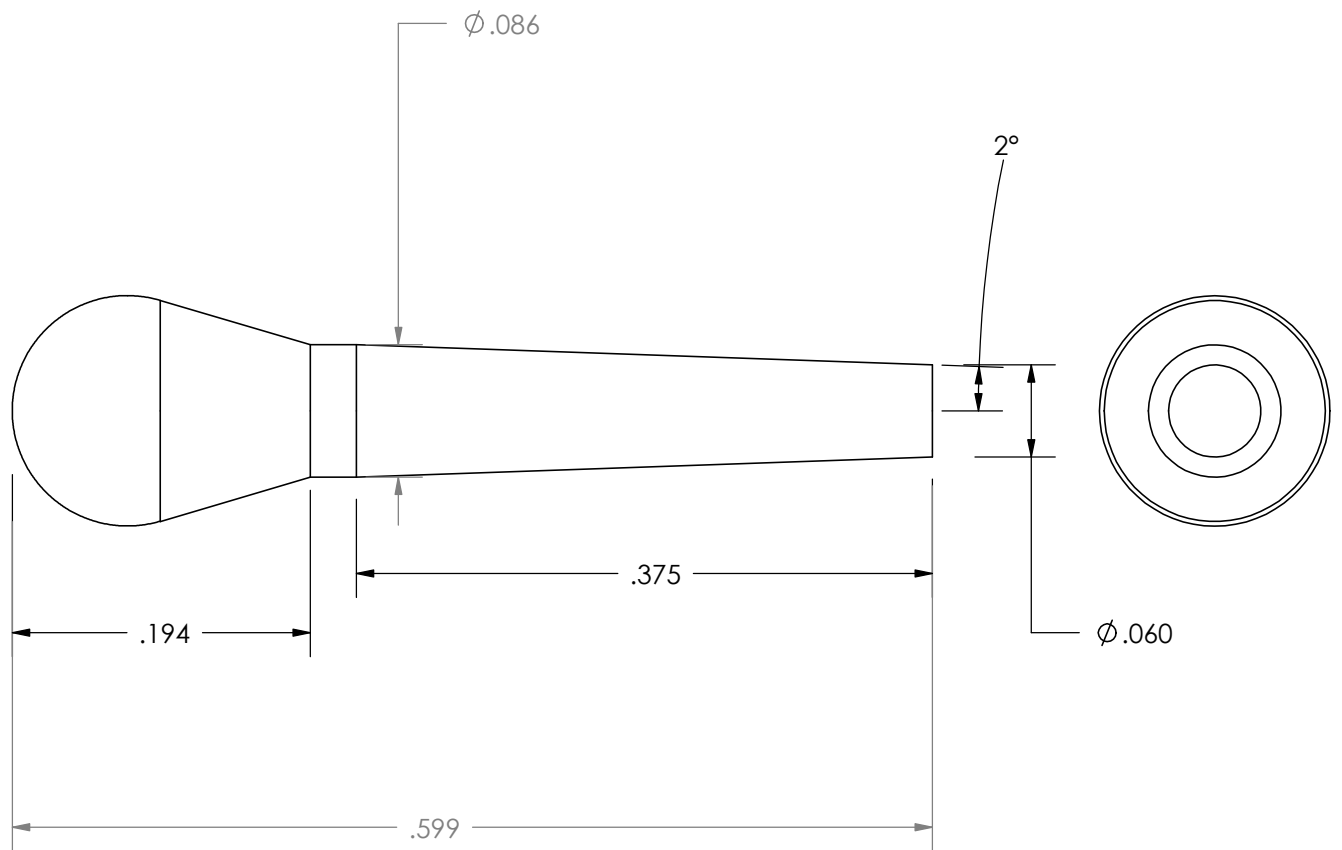
| | | |
|-----------------------|---|------------------------------------|
| 1 | prelim release | 14-Oct-04 |
| REV | Description | DATE |
| MATERIAL Walnut | Inch Dimensions Tolerances $\pm .015"$ typ | DESCRIPTION Standoff-clock-2003 |
| FINISH oil | OK to scale drawing if box on right is to scale | Project Clock 2003 |
| DRAWN by: G Mahony | Third Angle Projection | Drawing # P-C03-0005 |
| DATE Drawn: 14-Oct-04 | | Page 1 of 1 |




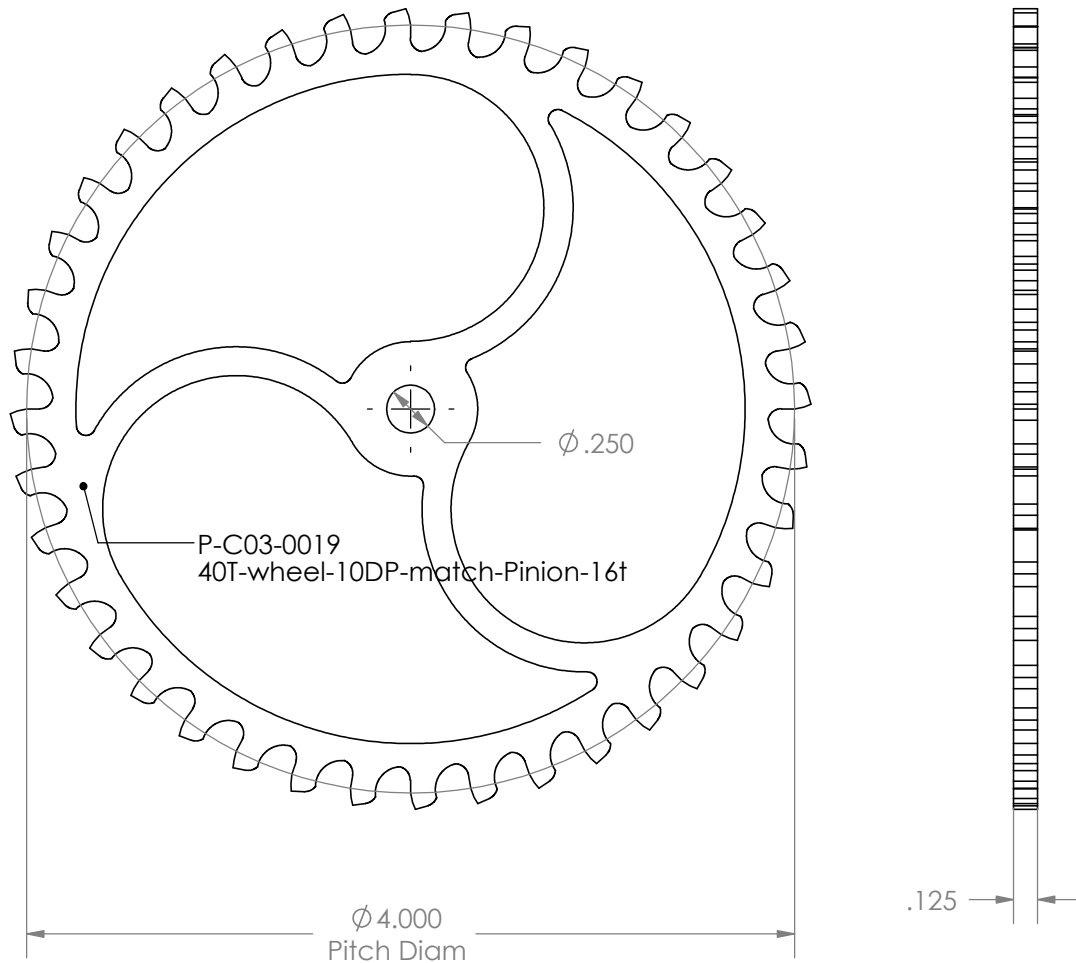
| | | | | |
|----------------------|----------------|---|--|---------------------------|
| 1 | prelim release | | | 14-Oct-04 |
| REV | Description | | | DATE |
| MATERIAL | | Inch Dimensions | | DESCRIPTION |
| Walnut | | Tolerances ±.015" typ | | baseplate-front-clock2003 |
| FINISH | | OK to scale drawing if box on right is to scale | | Project clock 2003 |
| oil | | Third Angle Projection | | File # P-C03-00014 |
| DESIGNED BY G.Ashany | | | | Page 1 of 1 |
| DATE: 10/04/04 | | | | |



| | | |
|---|---|---------------------------------------|
| 1 | prelim release | 14-Oct-04 |
| REV | Description | DATE |
| MATERIAL Rosewood | Inch Dimensions Tolerances $\pm .015$ " typ | DESCRIPTION idler-shaft-hour-hands |
| FINISH none | OK to scale drawing if box on right is to scale | Project clock 2003 |
| DRAWN by: G Mahony DATE Drawn: 14-Oct-04 | Third Angle Projection | Drawing # P-C03-0017 |
| | | Page 1 of 1 |

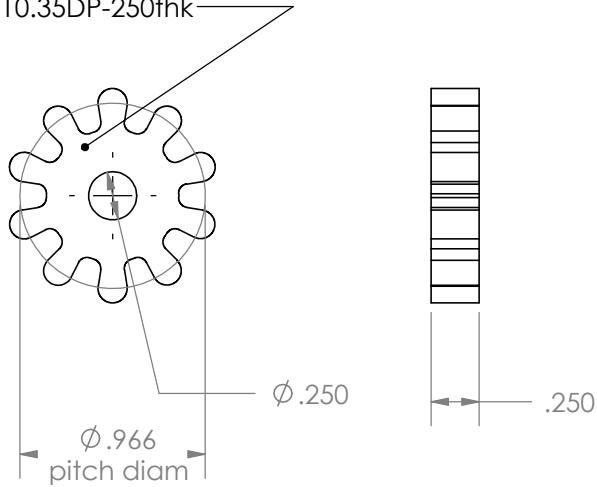


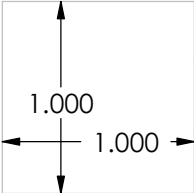

| | | |
|---|---|---|
| 1 | prelim release | 14-Oct-04 |
| REV | Description | DATE |
| MATERIAL Brass | Inch Dimensions Tolerances $\pm .015"$ typ OK to scale drawing if box on right is to scale | DESCRIPTION tapered-dowel-wheel-lock |
| | | Project clock2003 |
| FINISH none | Third Angle Projection  | Drawing # P-C03-0018 |
| DRAWN by: G Mahony DATE Drawn: 14-Oct-04 | | Page 1 of 1 |

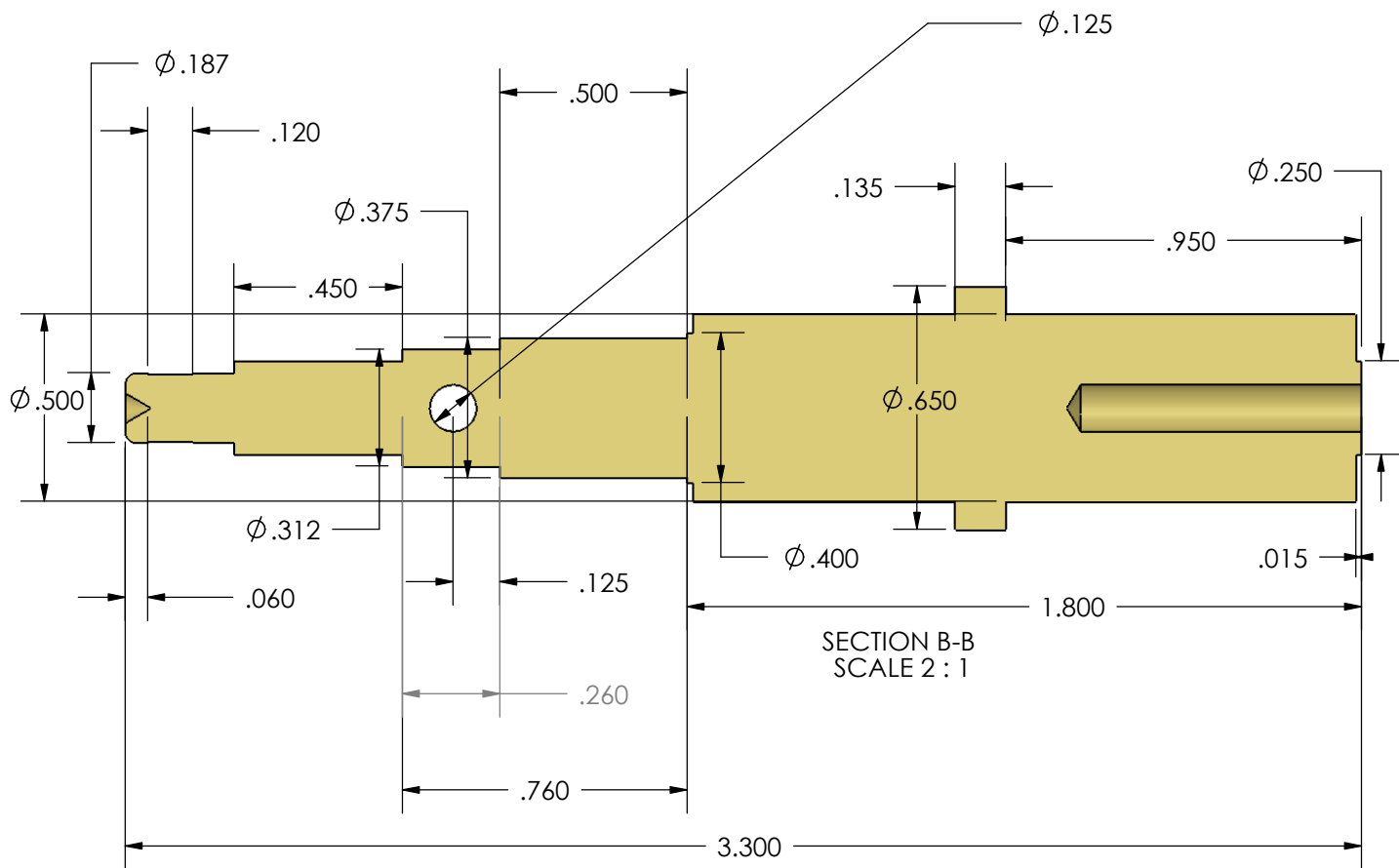
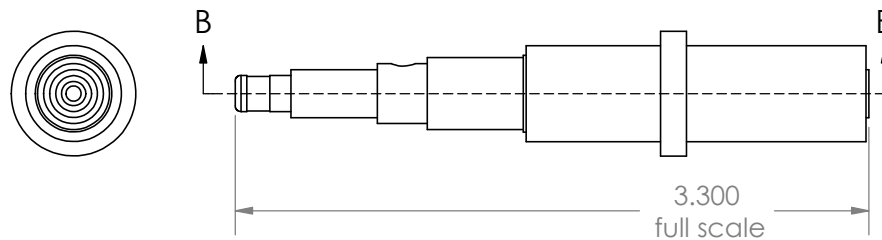


| | | | |
|--------------------|---|---------------------------------|-------------|
| 1 | prelim release | | |
| REV | Description | | DATE |
| MATERIAL | Inch Dimensions | DESCRIPTION | |
| FINISH | Tolerances $\pm .015"$ typ | 40T-wheel-10DP-match-Pinion-16t | |
| | OK to scale drawing if box on right is to scale | Project | |
| DRAWN by: G Mahony | Third Angle Projection | Drawing # | Page 1 of 1 |
| DATE Drawn: | | P-C03-0019 | |

P-C03-0020
10T-pinion-10.35DP-250thk



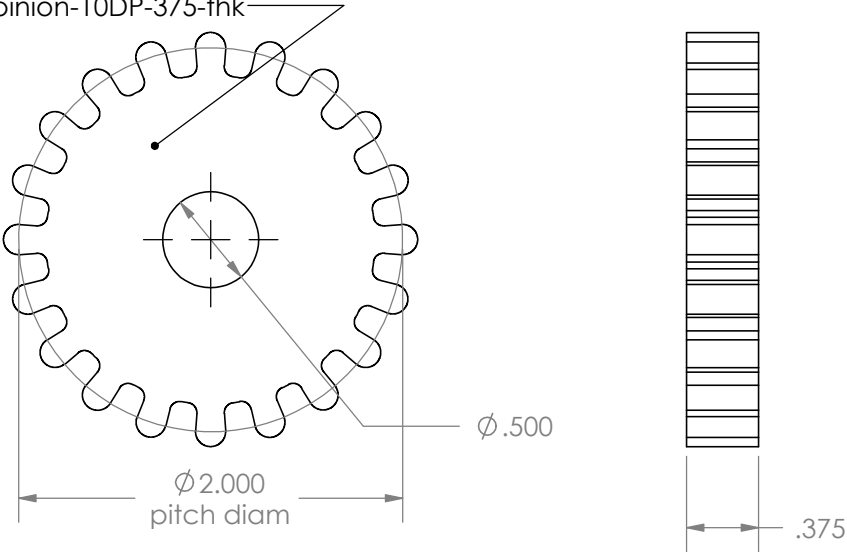
| | | | | |
|--------------------|---|---|---------------------------|-------------|
| 1 | prelim release | | | |
| REV | Description | | | DATE |
| MATERIAL | Inch Dimensions |  | DESCRIPTION | |
| FINISH | Tolerances ±.015" typ | | 10T-pinion-10.35DP-250thk | |
| | OK to scale drawing if box on right is to scale | | Project | |
| DRAWN by: G Mahony | Third Angle Projection | Drawing # | | Page 1 of 1 |
| DATE Drawn: |  | P-C03-0020 | | |

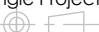


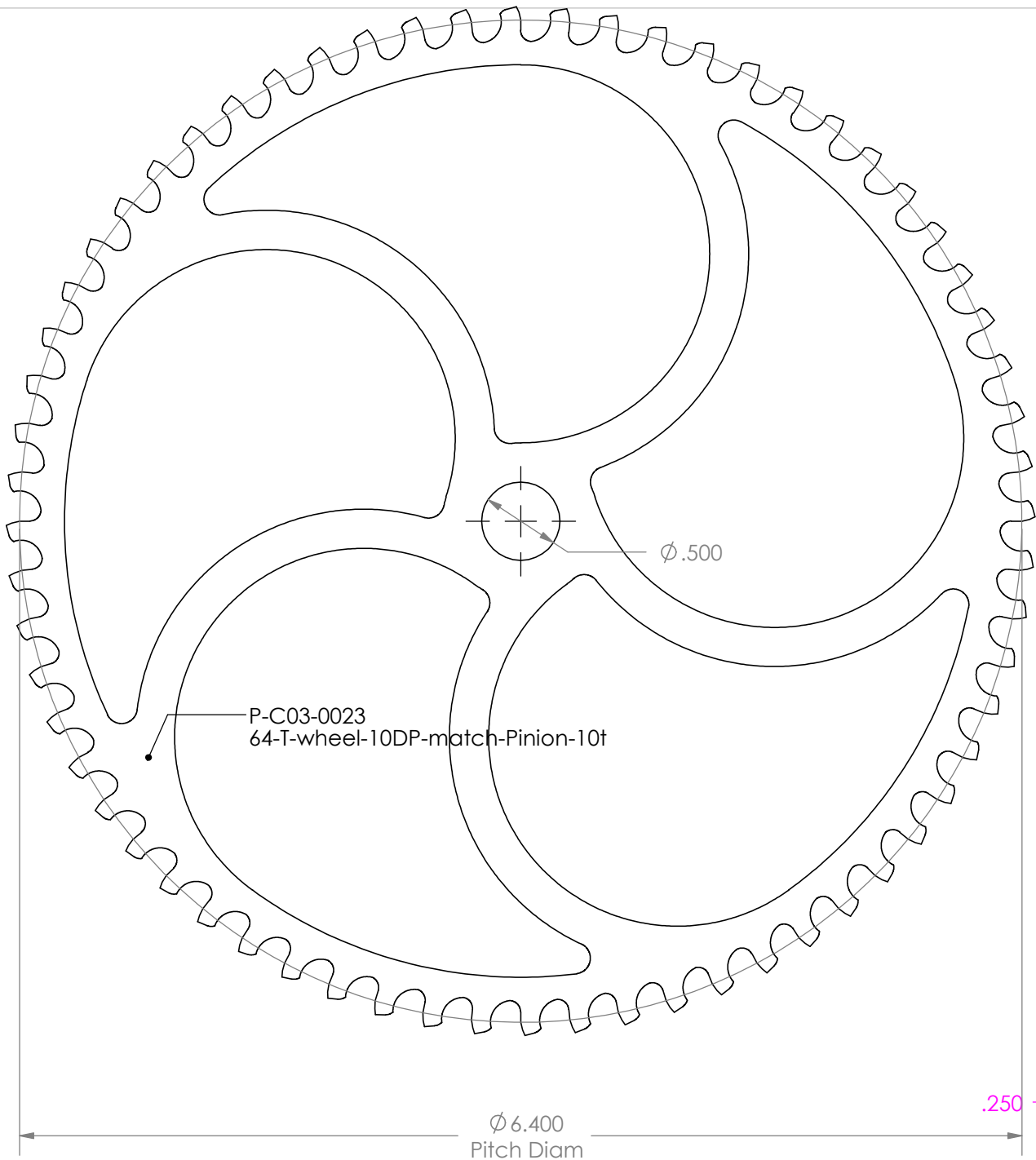
| | | | |
|---|---|-------------------------|-----------------------------|
| 1 | prelim release | 15-Oct-04 | |
| REV | Description | DATE | |
| MATERIAL Walnut | Inch Dimensions Tolerances $\pm .015"$ typ | | DESCRIPTION shaft-minute |
| FINISH oil | OK to scale drawing if box on right is to scale | | Project clock 2003 |
| DRAWN by: G Mahony DATE Drawn: 15-Oct-04 | Third Angle Projection | Drawing # P-C03-0021 | Page 1 of 1 |

P-C03-0022

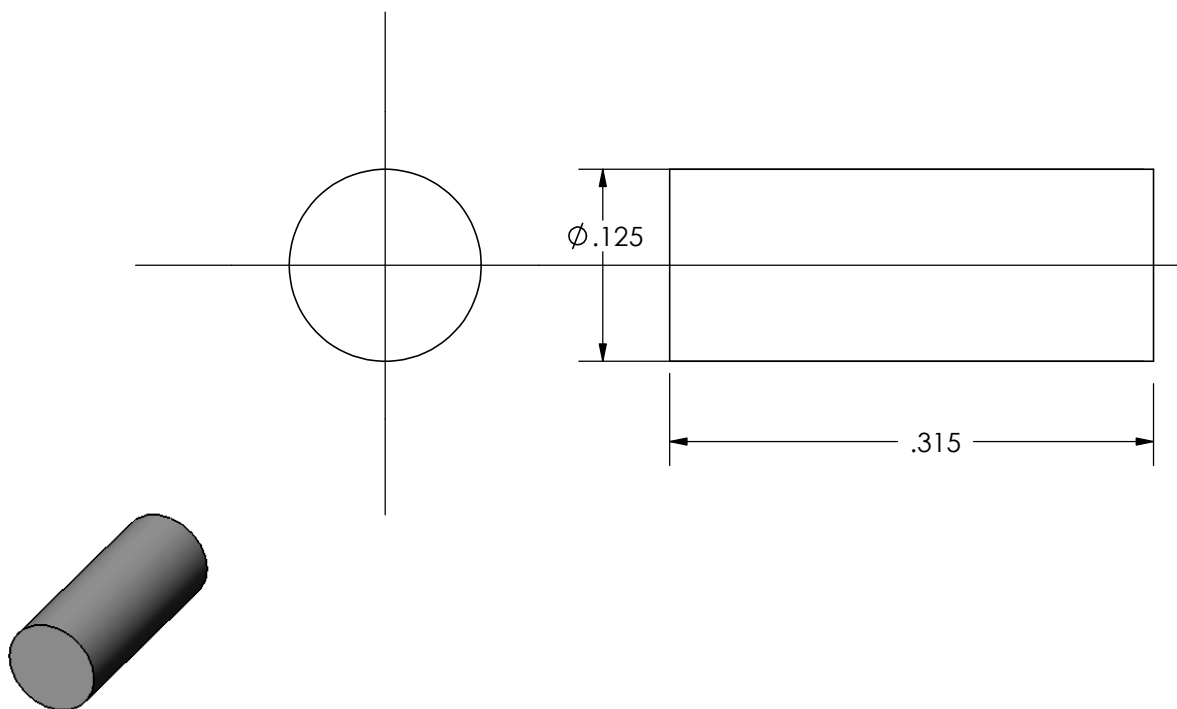
20-T-pinion-10DP-375-thk


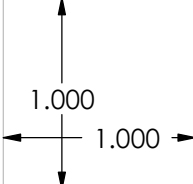


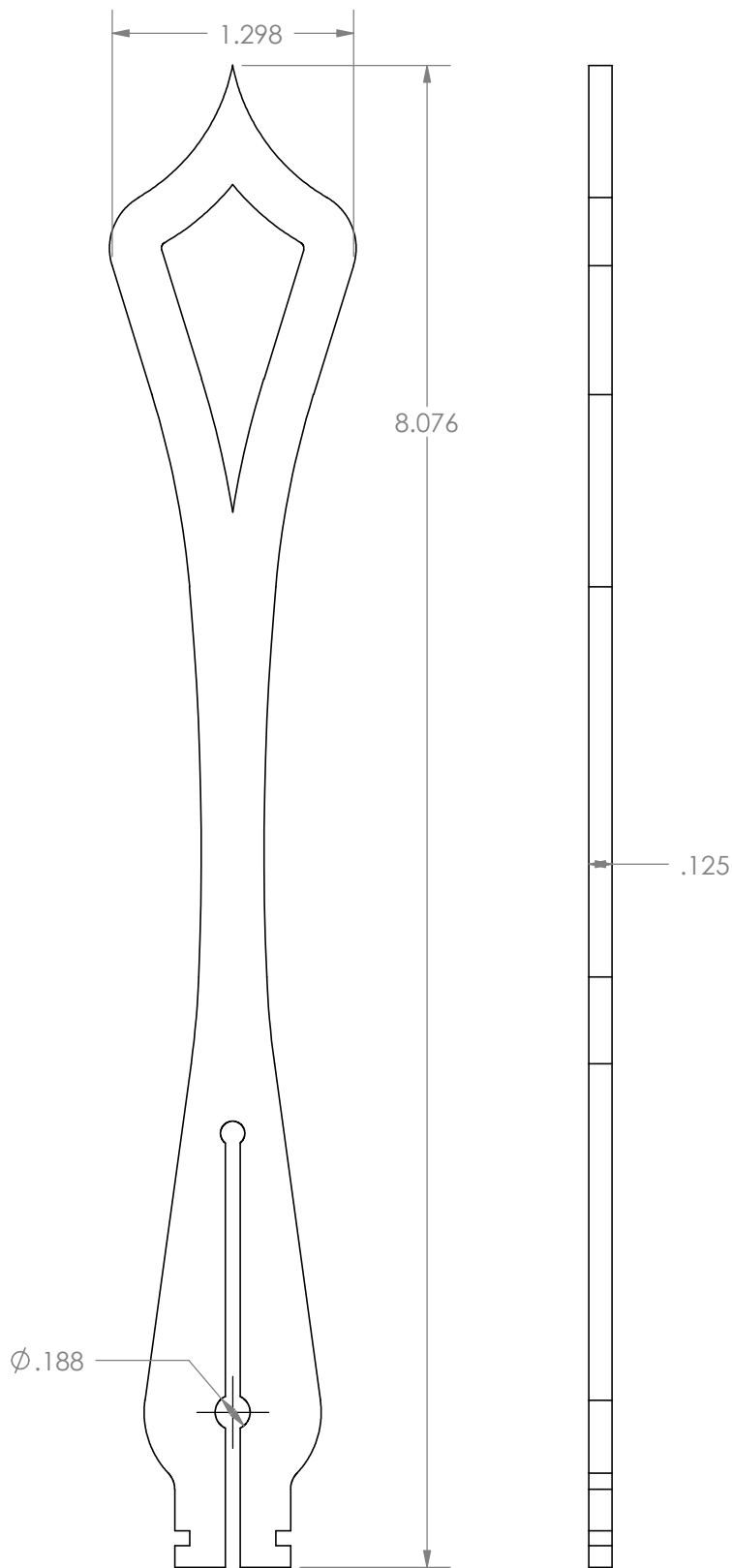
| | | |
|--------------------|---|--------------------------|
| 1 | prelim release | 12-Nov-04 |
| REV | Description | DATE |
| MATERIAL | Inch Dimensions | DESCRIPTION |
| FINISH | Tolerances ±.015" typ | 20-T-pinion-10DP-375-thk |
| | OK to scale drawing if box on right is to scale | Project |
| DRAWN by: G Mahony | Third Angle Projection | Drawing # |
| DATE Drawn: |  | P-C03-0022 |

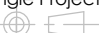
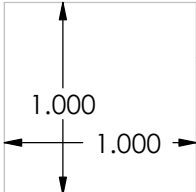


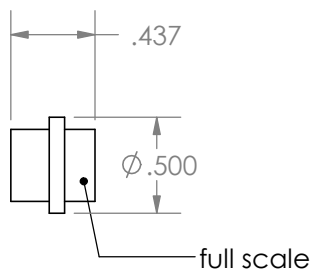
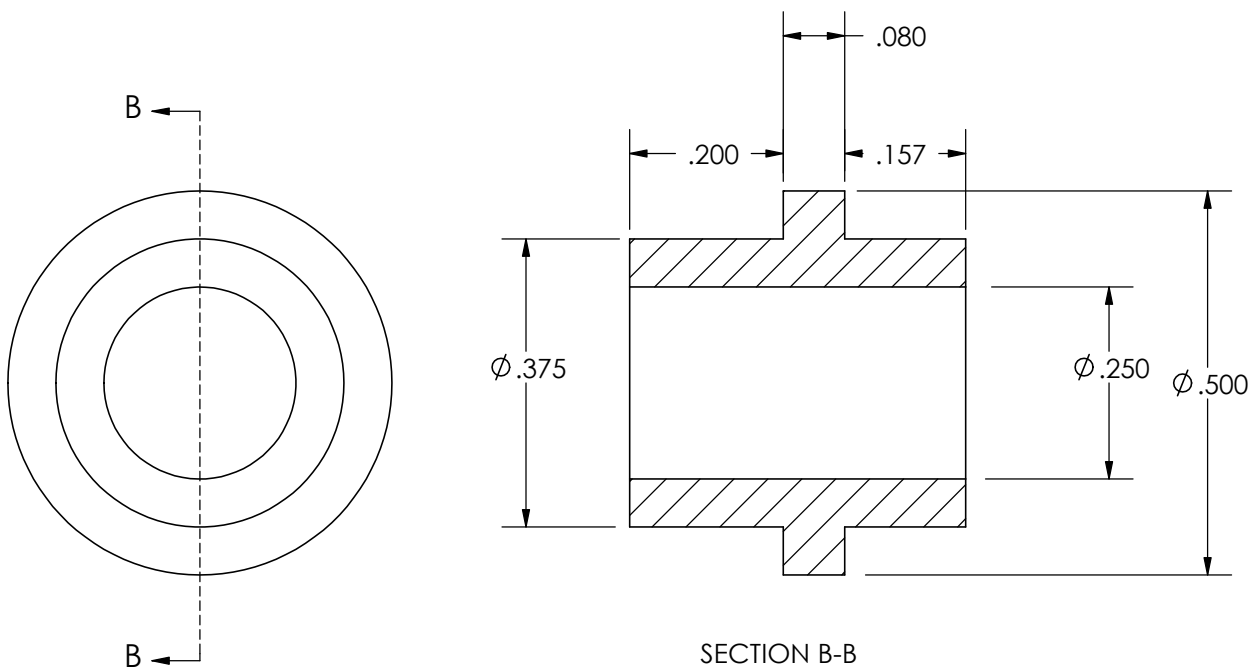
| | | |
|--------------------|---|----------------------------------|
| 1 | prelim release | 12-Nov-04 |
| REV | Description | DATE |
| MATERIAL | Inch Dimensions | DESCRIPTION |
| FINISH | Tolerances ±.015" typ | 64-T-wheel-10DP-match-Pinion-10t |
| DRAWN by: G Mahony | OK to scale drawing if box on right is to scale | Project |
| DATE Drawn: | Third Angle Projection | Drawing # P-C03-0023 |
| | | Page 1 of 1 |




| | | | |
|---|---|---|-------------------------------|
| 1 | prelim release | | 14-Oct-04 |
| REV | Description | | DATE |
| MATERIAL walnut FINISH none DRAWN by: G Mahony DATE Drawn: 14-Oct-04 | Inch Dimensions Tolerances ±.015" typ OK to scale drawing if box on right is to scale Third Angle Projection  |  | DESCRIPTION key-hour-idler |
| | | Project Clock 2003 | |
| | | Drawing # P-C03-0024 | |
| | | | Page 1 of 1 |



| | | |
|--|---|--|
| 1 | prelim release | 15-Oct-04 |
| REV | Description | DATE |
| MATERIAL walnut FINISH oil DRAWN by: G Mahony DATE Drawn: 15-Oct-04 | Inch Dimensions Tolerances $\pm .015"$ typ OK to scale drawing if box on right is to scale Third Angle Projection | DESCRIPTION hand-minute Project clock 2003 Drawing # P-C03-0025 |
| |   | Page 1 of 1 |

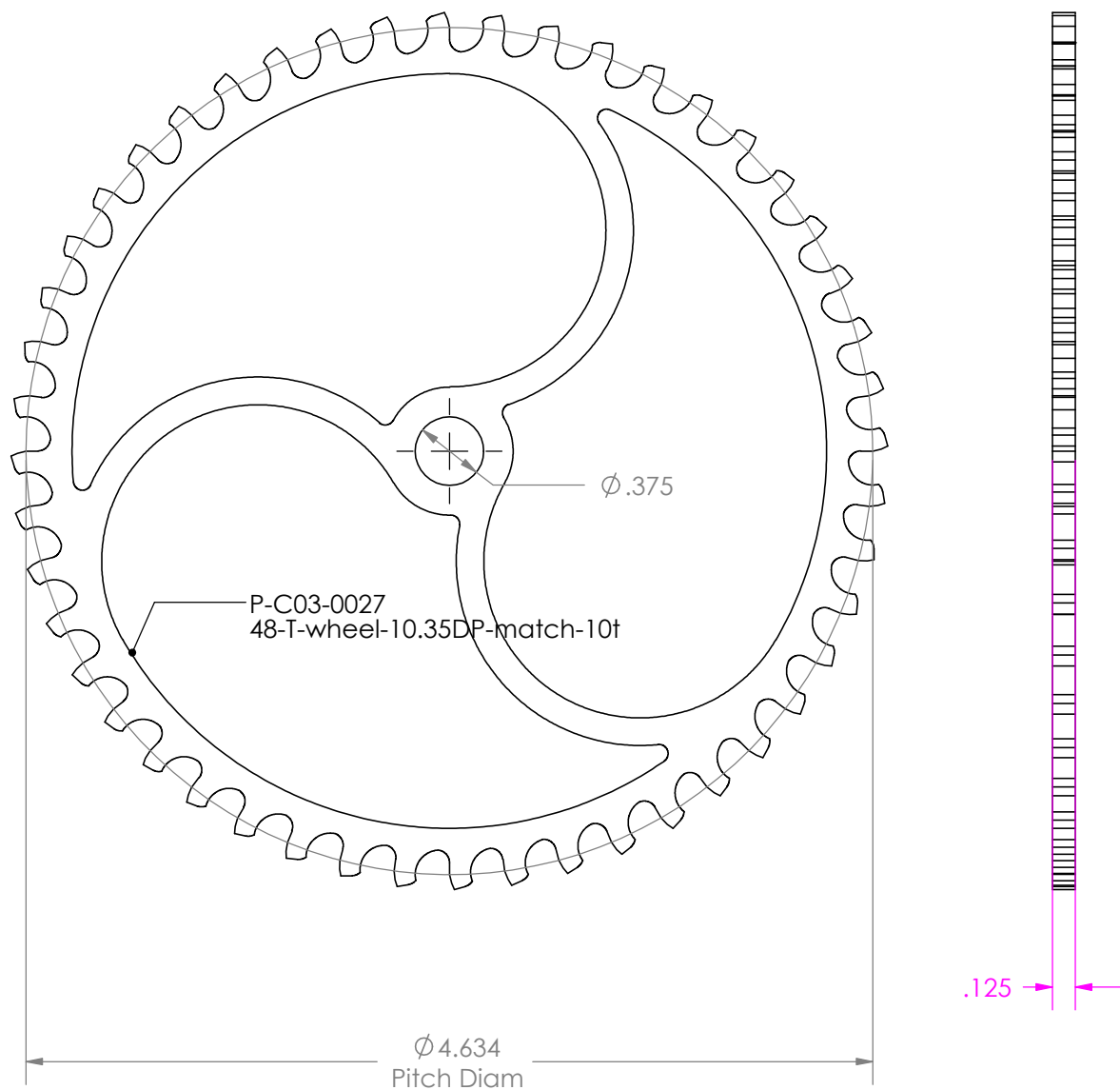


| | | | |
|---|---|--|-----------|
| 1 | prelim release | | 31-Dec-03 |
| REV | Description | | DATE |
| MATERIAL Delrin | <div>Inch Dimensions</div> <div>Tolerances ±.015" typ</div> <div>OK to scale drawing if box on right is to scale</div> <div>Third Angle Projection</div> <div></div> | <div>DESCRIPTION Cannon Tube</div> | |
| FINISH none | | <div>Project clock 2003</div> | |
| DRAWN by: G Mahony DATE Drawn: 31-Dec-03 | | <div>Drawing # P-C03-0026</div> | |

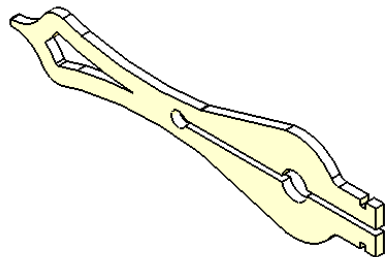
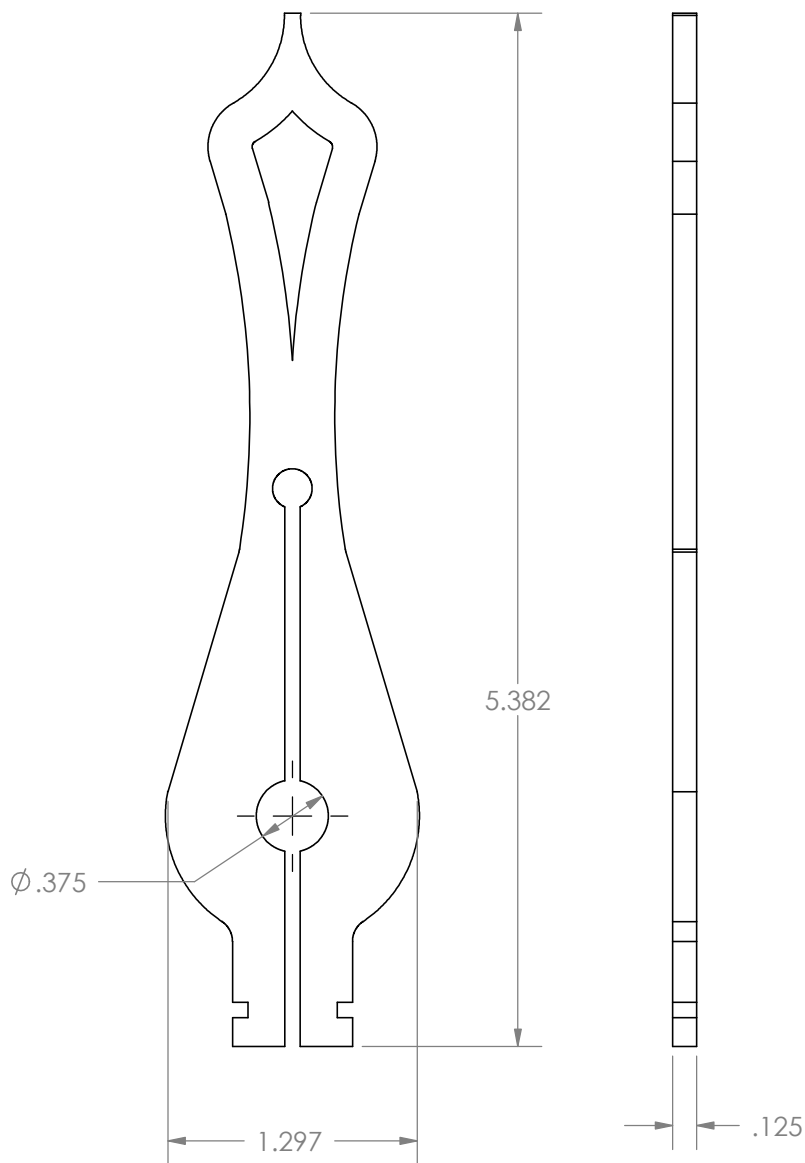
1.000

1.000

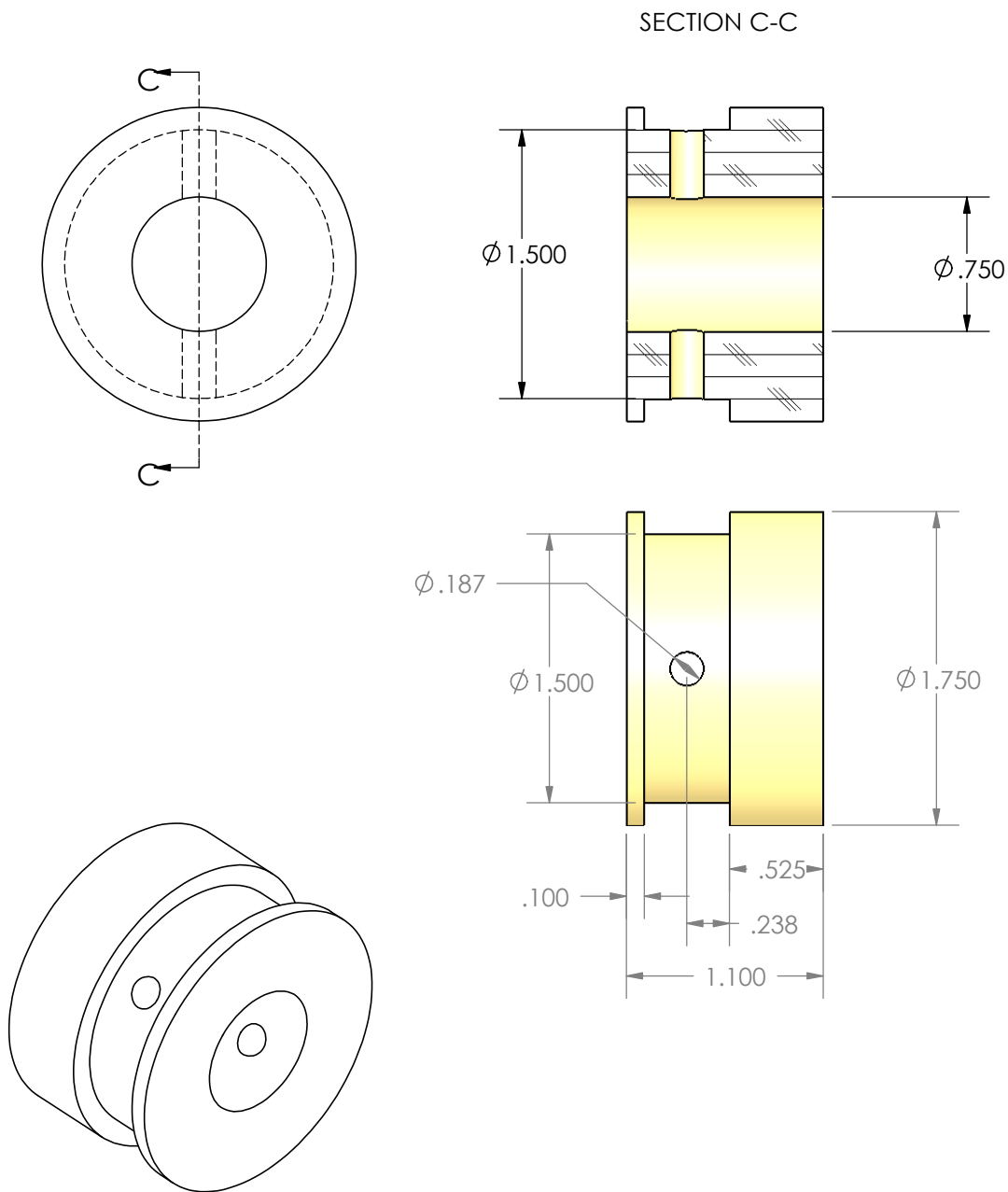
Page 1 of 1



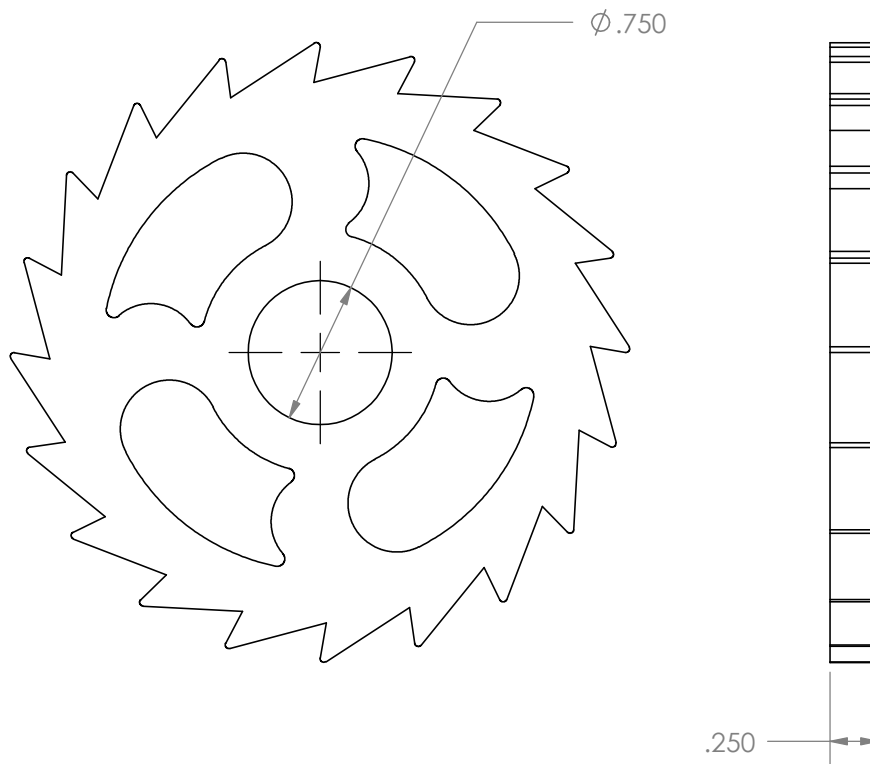
| | | | |
|--------------------|---|--|---|
| 1 | prelim release | 12-Nov-04 | |
| REV | Description | DATE | |
| MATERIAL | Inch Dimensions | <div> <div>1.000</div> <div>1.000</div> </div> | DESCRIPTION 48-T-wheel-10.35DP-match-10t |
| FINISH | Tolerances ±.015" typ OK to scale drawing if box on right is to scale | | Project |
| DRAWN by: G Mahony | Third Angle Projection | Drawing # P-C03-0027 | Page 1 of 1 |
| DATE Drawn: | | | |


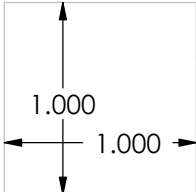


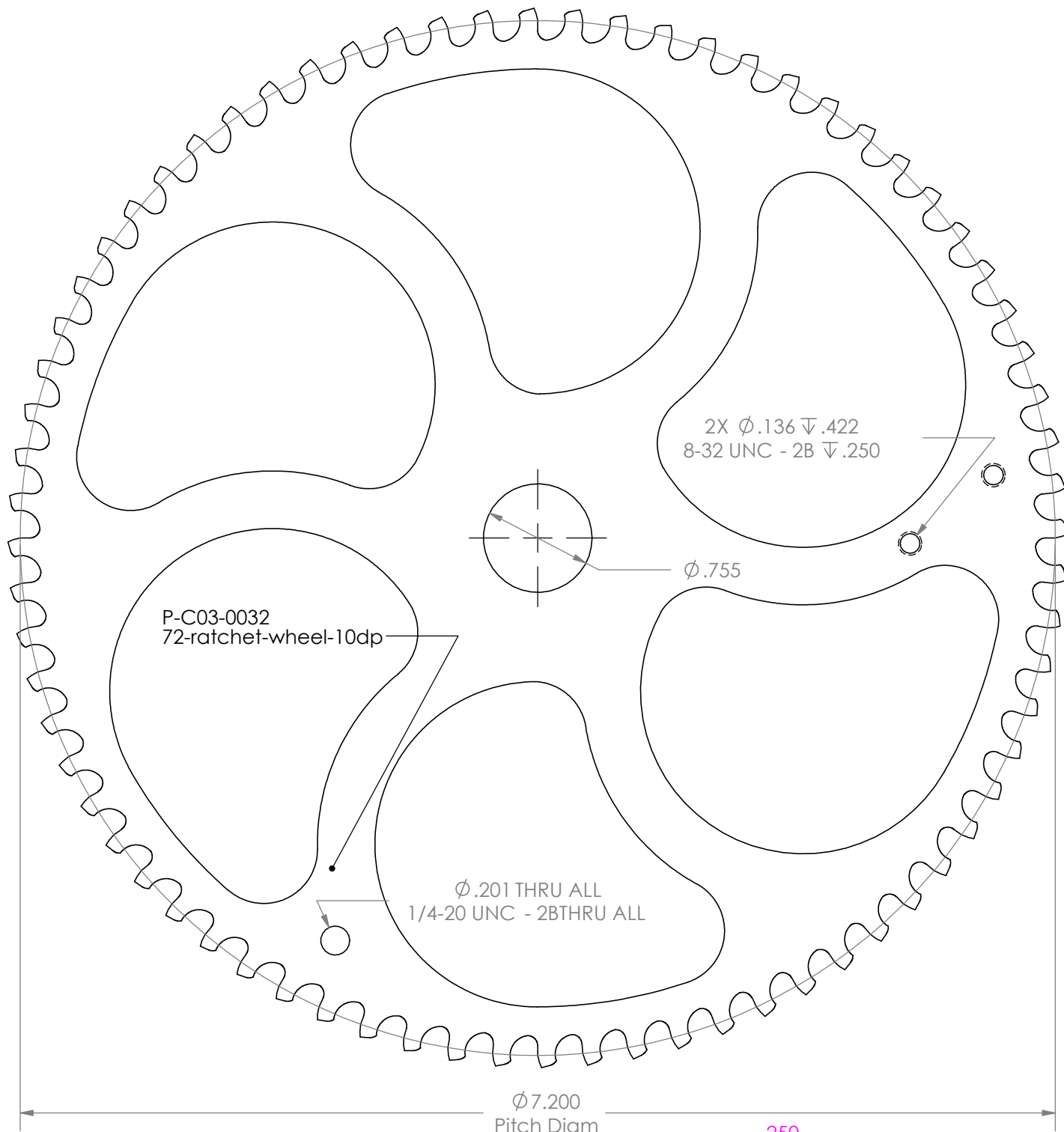
| | | | |
|--|----------------|---|--|
| 1 | prelim release | 14-Oct-04 | |
| REV | Description | DATE | |
| MATERIAL wlanut FINISH oil DRAWN by: G Mahony DATE Drawn: 14-Oct-04 | | Inch Dimensions Tolerances $\pm .015"$ typ OK to scale drawing if box on right is to scale Third Angle Projection | DESCRIPTION hand-hour Project clock 2003 Drawing # P-C03-0028 |
| | | | Page 1 of 1 |



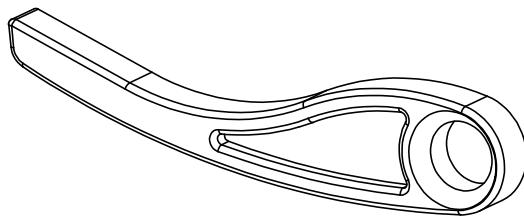
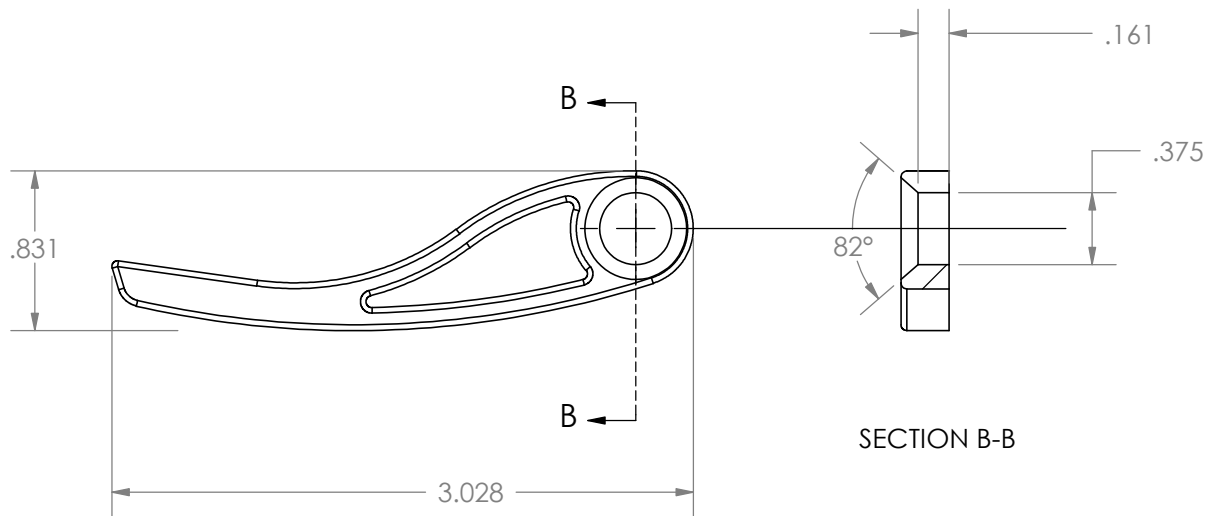
| | | |
|-----------------------|---|------------------------------------|
| 1 | prelim release | 14-Oct-04 |
| REV | Description | DATE |
| MATERIAL walnut | Inch Dimensions Tolerances $\pm .015"$ typ | DESCRIPTION drum-string-ratchet |
| FINISH oil | OK to scale drawing if box on right is to scale | Project clock 2003 |
| DRAWN by: G Mahony | Third Angle Projection | Drawing # P-C03-0029 |
| DATE Drawn: 14-Oct-04 | | Page 1 of 1 |




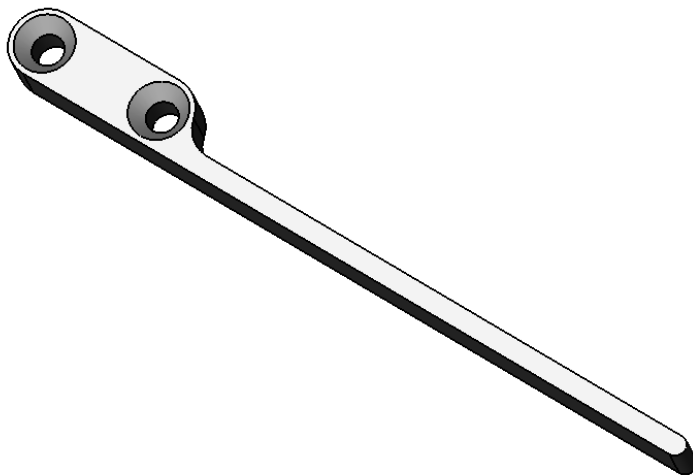
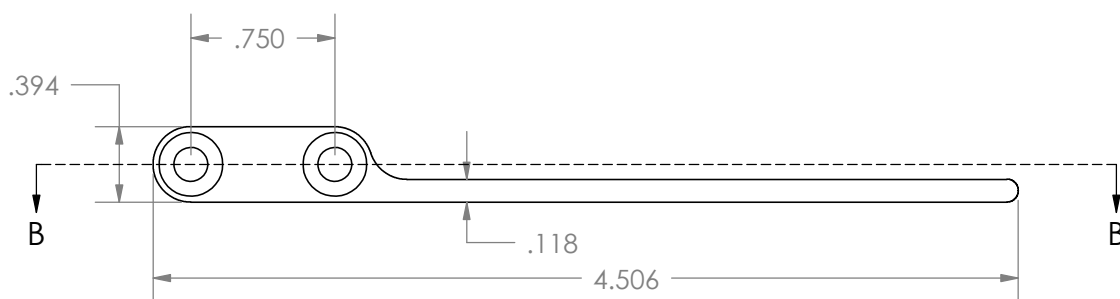
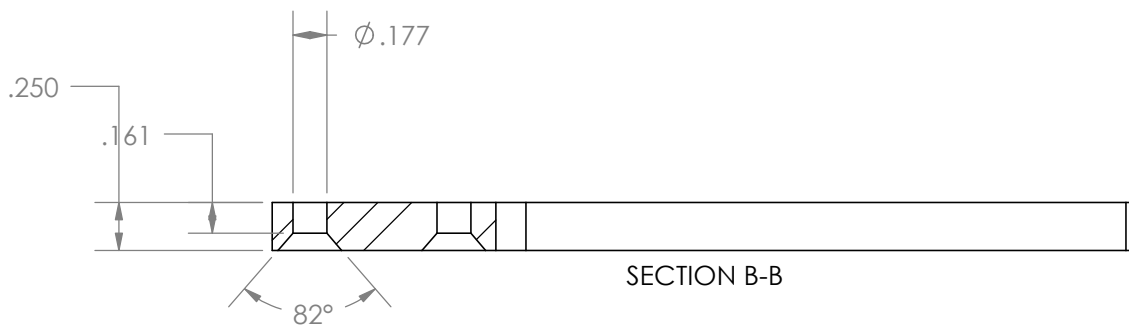
| | | | |
|--|----------------|---|---|
| 1 | prelim release | 14-Oct-04 | |
| REV | Description | DATE | |
| MATERIAL delrin or hard wood FINISH none DRAWN by: G Mahony DATE Drawn: 14-Oct-04 | | Inch Dimensions Tolerances $\pm .015"$ typ OK to scale drawing if box on right is to scale Third Angle Projection | DESCRIPTION ratchet-wheel Project clock 2003 Drawing # P-C03-0031 |
| | |   | Page 1 of 1 |



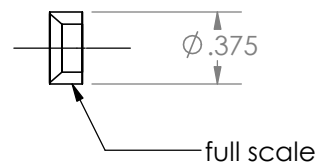
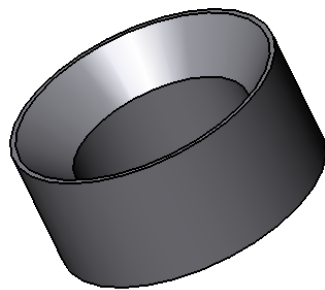
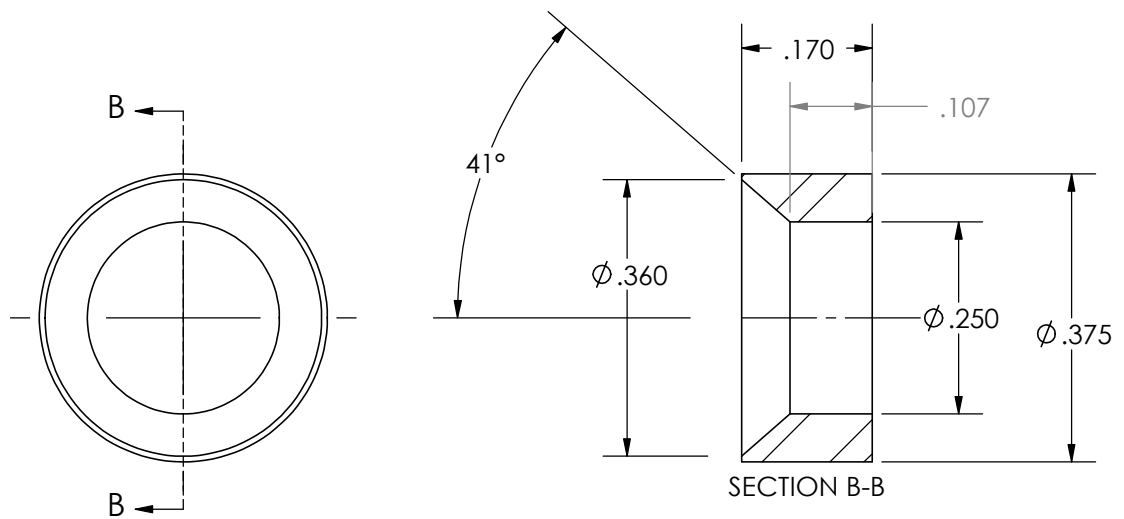
| | | |
|--------------------|---|-----------------------|
| 1 | prelim release | 12-Nov-04 |
| REV | Description | DATE |
| MATERIAL | Inch Dimensions | DESCRIPTION |
| FINISH | Tolerances $\pm .015"$ typ | 72-ratchet-wheel-10dp |
| DRAWN by: G Mahony | OK to scale drawing if box on right is to scale | Project |
| DATE Drawn: | Third Angle Projection | Drawing # |
| | | P-C03-0032 |
| | | Page 1 of 1 |



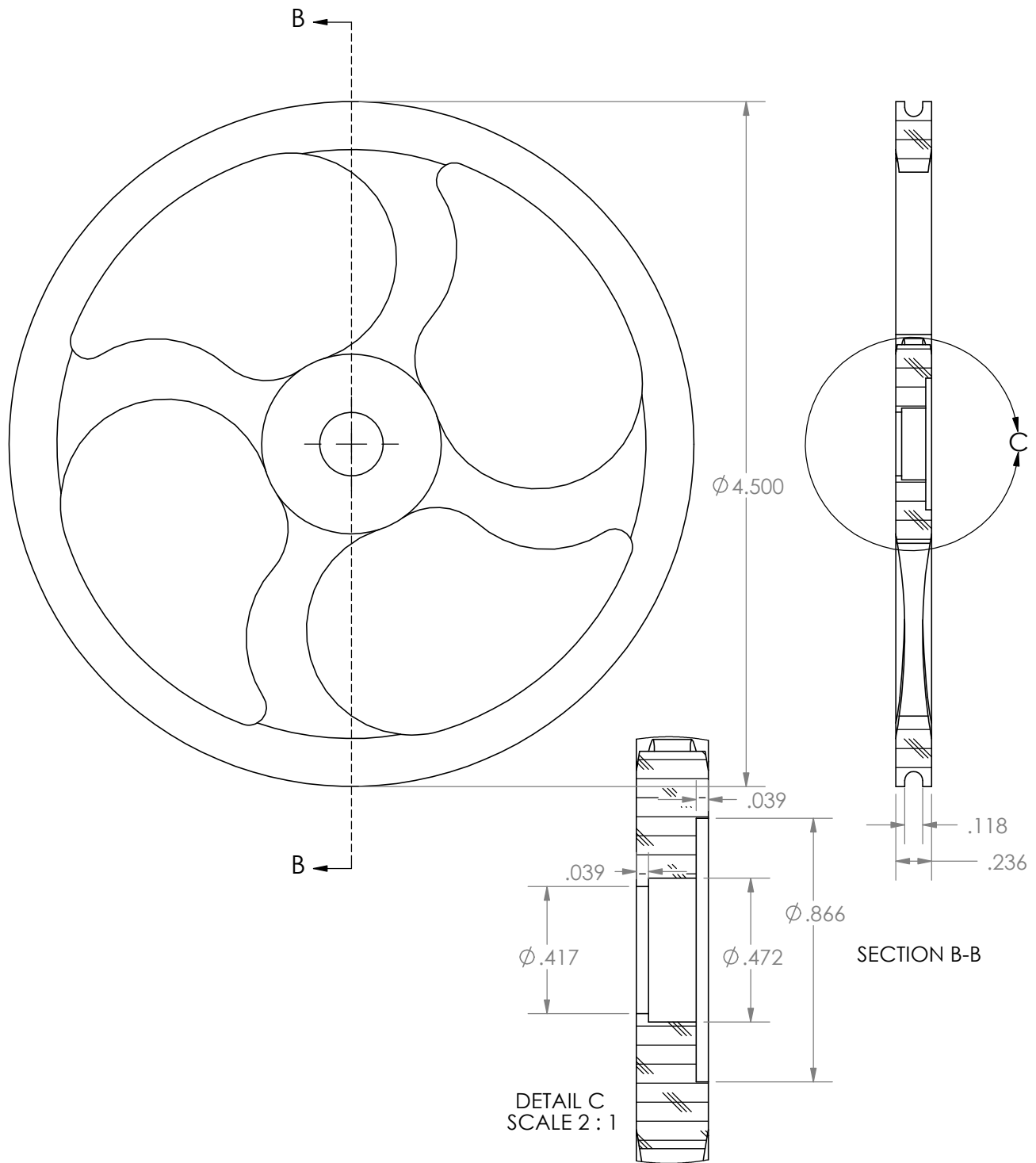
| | | |
|-----------------------|---|---------------------------------|
| 1 | prelim release | 14-Oct-04 |
| REV | Description | DATE |
| MATERIAL delrin | Inch Dimensions Tolerances $\pm .015"$ typ | DESCRIPTION ratchet-stricker |
| FINISH none | OK to scale drawing if box on right is to scale | Project clock 2003 |
| DRAWN by: G Mahony | Third Angle Projection | Drawing # P-C03-0033 |
| DATE Drawn: 14-Oct-04 |  | Page 1 of 1 |



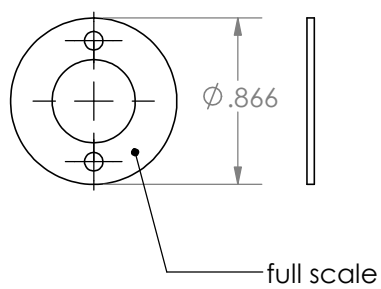
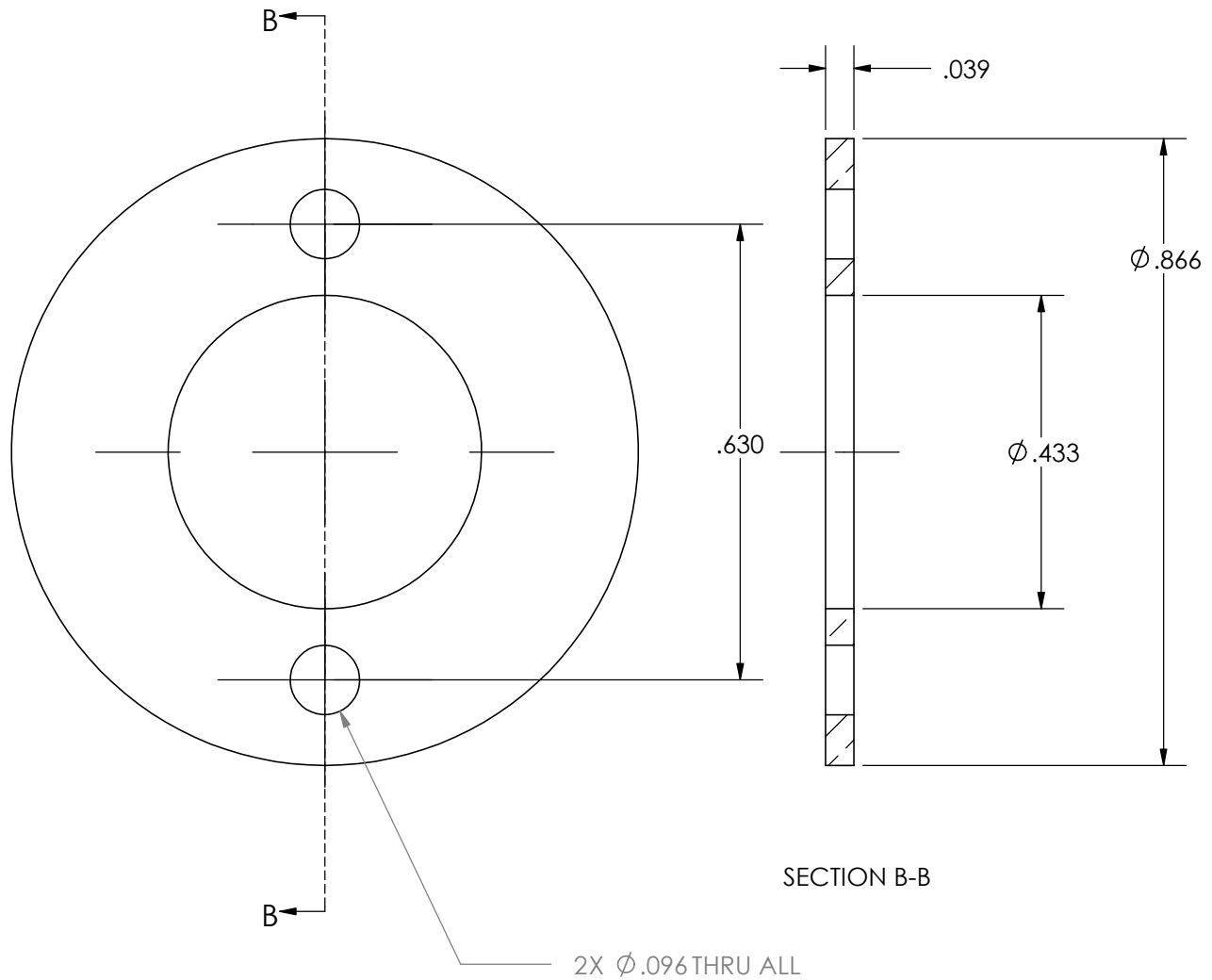
| | | | |
|---|---|-------------------------|---------------------------------------|
| 1 | prelim release | | 14-Oct-04 |
| REV | Description | | DATE |
| MATERIAL delrin | Inch Dimensions Tolerances $\pm .015"$ typ | | DESCRIPTION spring-ratchet-striker |
| FINISH none | OK to scale drawing if box on right is to scale | | Project clock 2003 |
| DRAWN by: G Mahony DATE Drawn: 14-Oct-04 | Third Angle Projection | Drawing # P-C03-0034 | Page 1 of 1 |



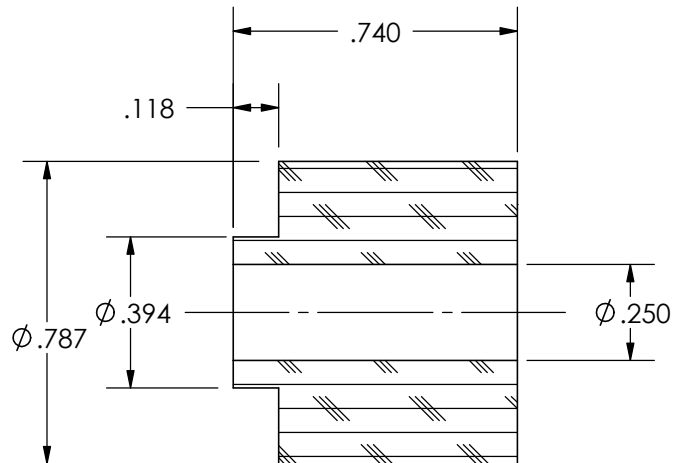
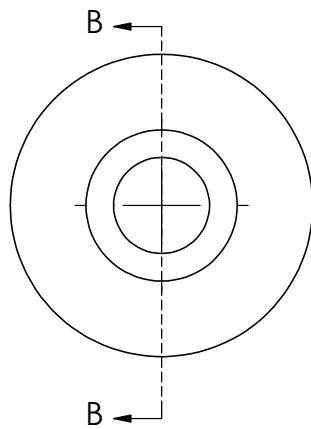
| | | | |
|---|--|-------------------------|-------------------------------------|
| 1 | prelim release | 14-Oct-04 | |
| REV | Description | DATE | |
| MATERIAL steel | Inch Dimensions Tolerances $\pm .015$ " typ OK to scale drawing if box on right is to scale | | DESCRIPTION spacer-ratchet-lever |
| | | | Project clock 2003 |
| FINISH none | Third Angle Projection | Drawing # P-C03-0035 | Page 1 of 1 |
| DRAWN by: G Mahony DATE Drawn: 14-Oct-04 | | | |



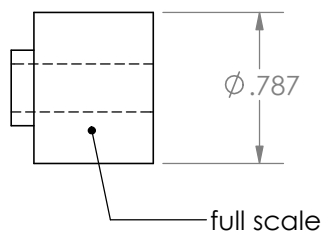
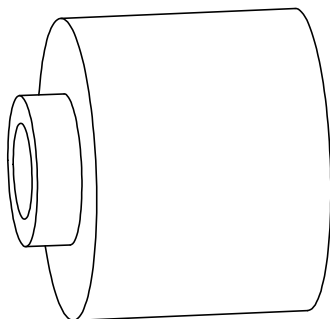
| | | |
|-----------------------|---|--|
| 1 | prelim release | 16-Oct-04 |
| REV | Description | DATE |
| MATERIAL walnut | Inch Dimensions Tolerances $\pm .015"$ typ | DESCRIPTION pulley-single-bearing-clock2003 |
| FINISH oil | OK to scale drawing if box on right is to scale | Project clock 2003 |
| DRAWN by: G Mahony | Third Angle Projection | Drawing # P-C03-0036 |
| DATE Drawn: 16-Oct-04 | | Page 1 of 1 |



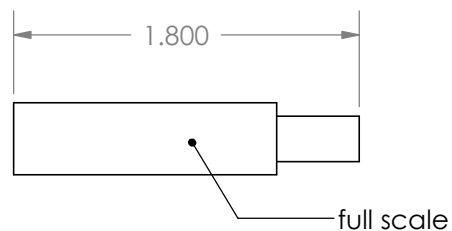
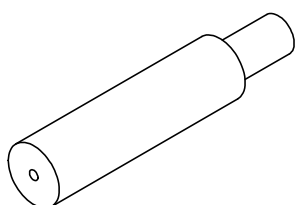
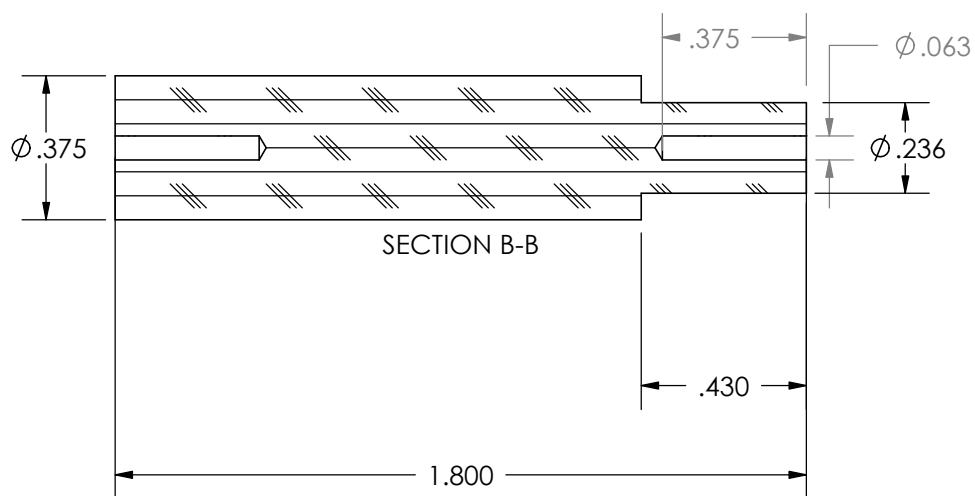
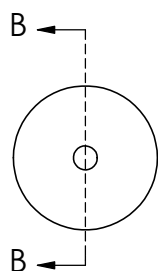
| | | |
|---|---|-------------------------------|
| 1 | prelim release | 16-Oct-04 |
| REV | Description | DATE |
| MATERIAL steel or brass FINISH none DRAWN by: G Mahony DATE Drawn: 16-Oct-04 | Inch Dimensions | DESCRIPTION |
| | Tolerances ±.015" typ | bearing-clamp-lock-for-pulley |
| | OK to scale drawing if box on right is to scale | Project clock 2003 |
| | Third Angle Projection | Drawing # P-C03-0037 |
| | | Page 1 of 1 |


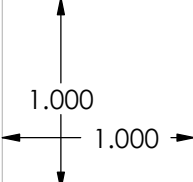


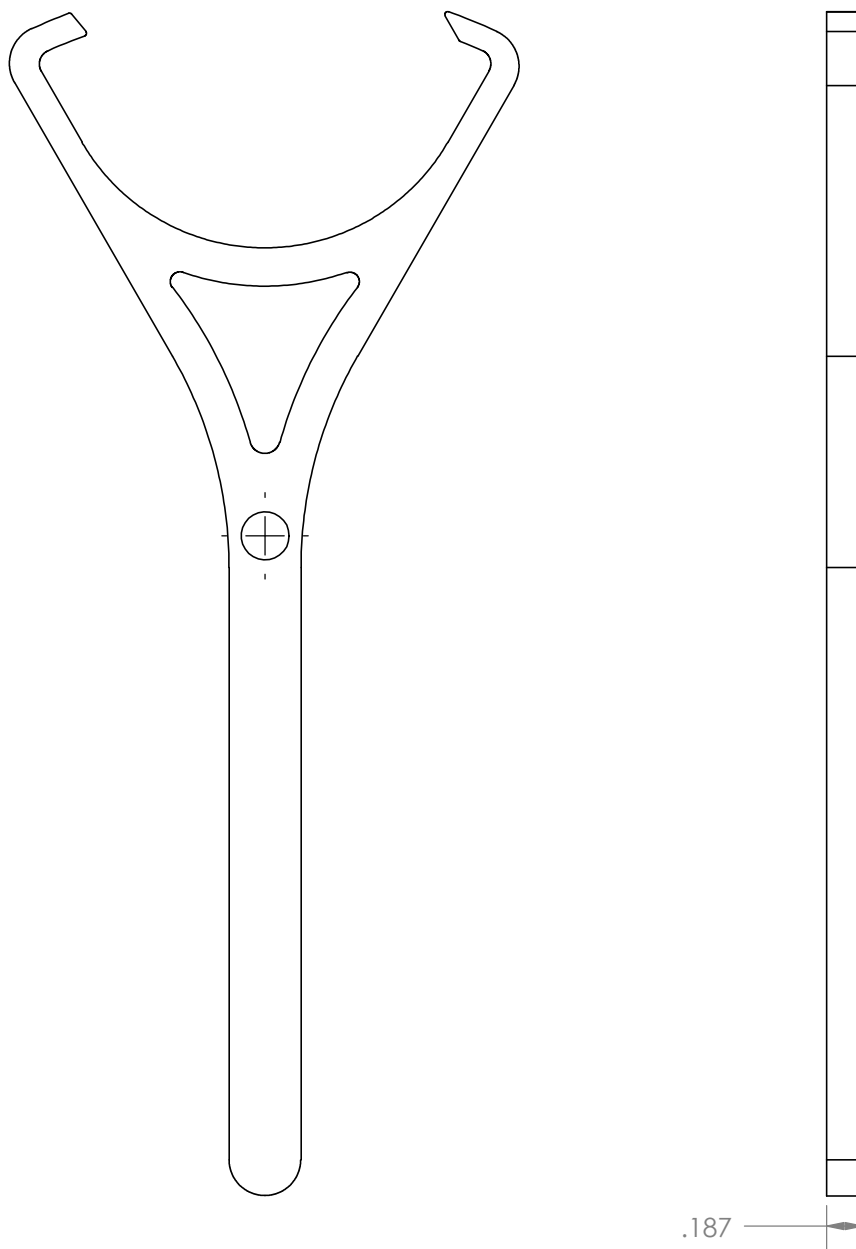
SECTION B-B




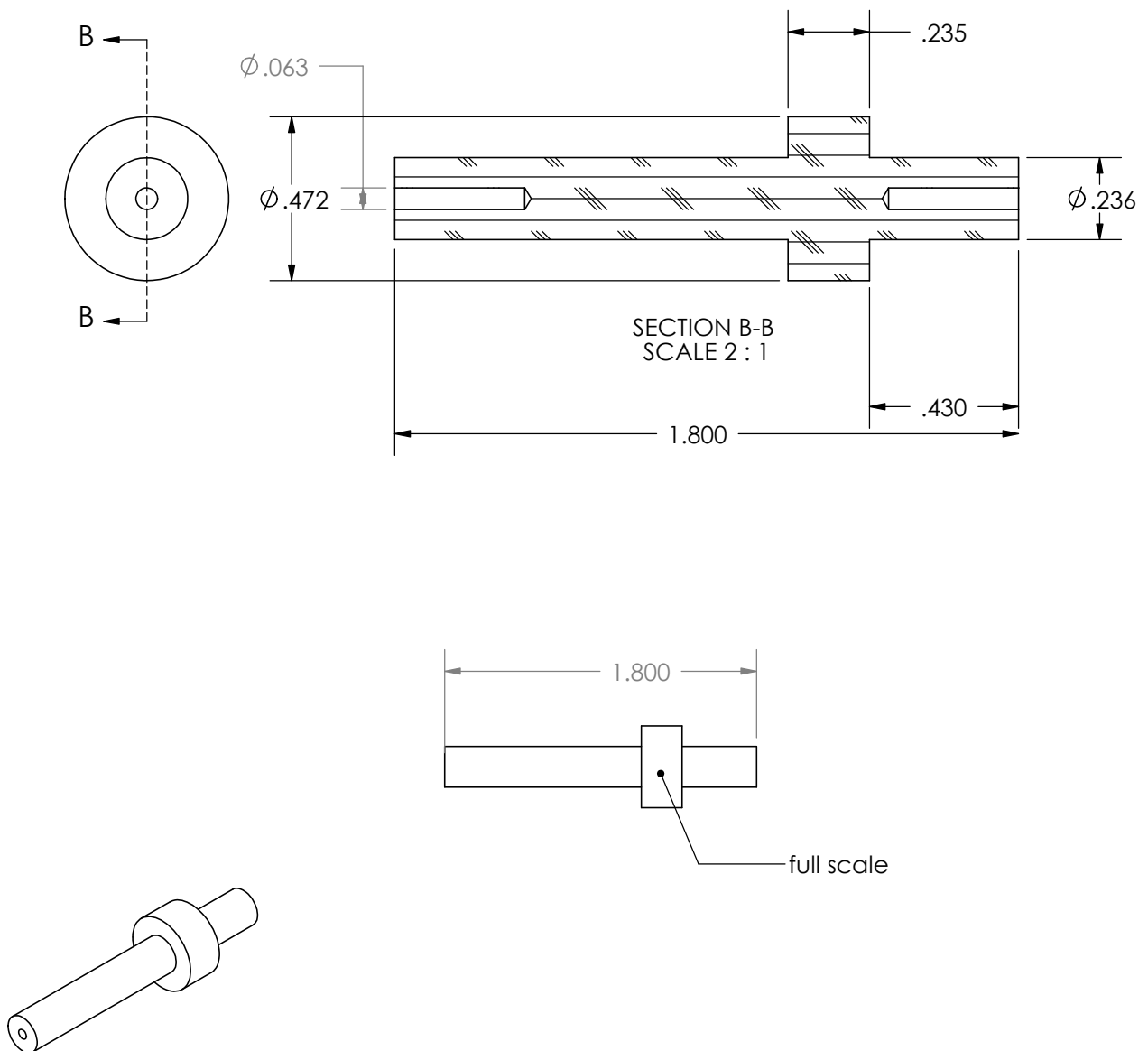
| | | | |
|--|---|--|--|
| 1 | prelim release | 16-Oct-04 | |
| REV | Description | DATE | |
| MATERIAL walnut FINISH oil DRAWN by: G Mahony DATE Drawn: 16-Oct-04 | Inch Dimensions Tolerances $\pm .015"$ typ OK to scale drawing if box on right is to scale Third Angle Projection | DESCRIPTION Standoff-pulley-clock2003 | |
| | | Project clock 2003 | |
| | | Drawing # P-C03-0038 | |
| | | Page 1 of 1 | |



| | | | |
|--|---|---|---------------------------------------|
| 1 | prelim release | | 16-Oct-04 |
| REV | Description | | DATE |
| MATERIAL walnut FINISH oil DRAWN by: G Mahony DATE Drawn: 16-Oct-04 | Inch Dimensions Tolerances ±.015" typ OK to scale drawing if box on right is to scale Third Angle Projection  |  | DESCRIPTION shaft-ticvk-tock-lever |
| | | Project clock 2003 | |
| | | Drawing # P-C03-0039 | |
| | | | Page 1 of 1 |

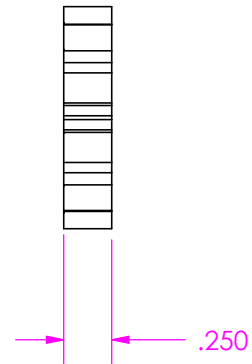
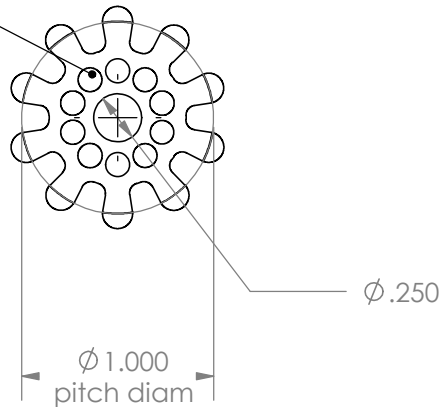


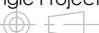
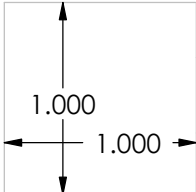
| | | |
|---|---|--------------------------------|
| 1 | prelim release | 16-Oct-04 |
| REV | Description | DATE |
| MATERIAL delrin | Inch Dimensions Tolerances $\pm .015"$ typ | DESCRIPTION tick-tock-lever |
| FINISH none | OK to scale drawing if box on right is to scale | Project clock 2003 |
| DRAWN by: G Mahony DATE Drawn: 16-Oct-04 | Third Angle Projection  | Drawing # P-C03-0040 |



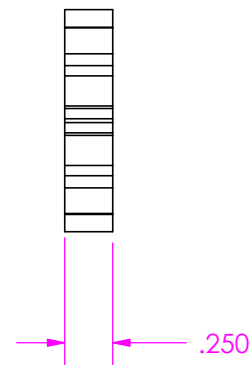
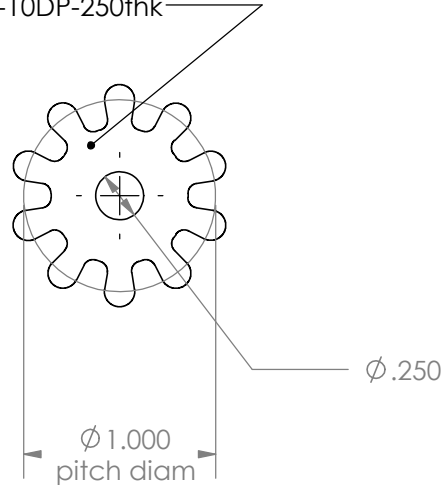
| | | |
|-----------------------|---|--------------------------------|
| 1 | prelim release | 16-Oct-04 |
| REV | Description | DATE |
| MATERIAL walnut | Inch Dimensions Tolerances ±.015" typ | DESCRIPTION shaft-tick-tock |
| FINISH oil | OK to scale drawing if box on right is to scale | Project clock 2003 |
| DRAWN by: G Mahony | Third Angle Projection | Drawing # P-C03-0041 |
| DATE Drawn: 16-Oct-04 | | Page 1 of 1 |

P-C03-0042
10T-pinion-10DP-250thk-escape-wheel



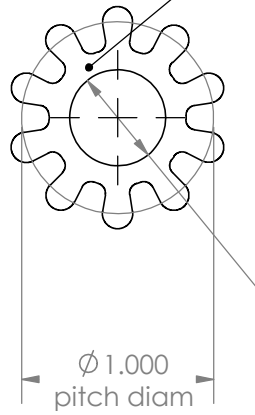
| | | |
|--------------------|---|-------------------------------------|
| 1 | prelim release | 12-Nov-04 |
| REV | Description | DATE |
| MATERIAL | Inch Dimensions | DESCRIPTION |
| FINISH | Tolerances $\pm .015"$ typ | 10T-pinion-10DP-250thk-escape-wheel |
| | OK to scale drawing if box on right is to scale | Project |
| DRAWN by: G Mahony | Third Angle Projection | Drawing # |
| DATE Drawn: |  | P-C03-0042 |
| |  | Page 1 of 1 |

P-C03-0043
10T-pinion-10DP-250thk



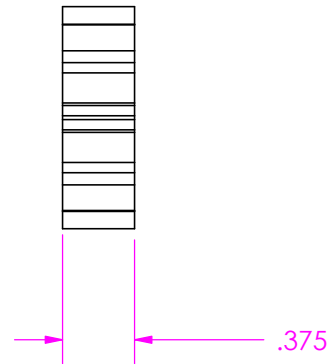
| | | | | |
|--------------------|---|--|-------------------------|-------------|
| 1 | prelim release | | | 12-Nov-04 |
| REV | Description | | | DATE |
| MATERIAL | Inch Dimensions | | DESCRIPTION | |
| FINISH | Tolerances ±.015" typ | | 10T-pinion-10DP-250thk | |
| DRAWN by: G Mahony | OK to scale drawing if box on right is to scale | | Project | |
| DATE Drawn: | Third Angle Projection | | Drawing # P-C03-0043 | Page 1 of 1 |

P-C03-0044
10 T-pinion-10DP375thk

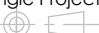
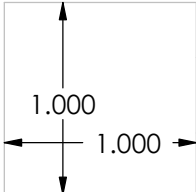


Ø .500

Ø 1.000
pitch diam

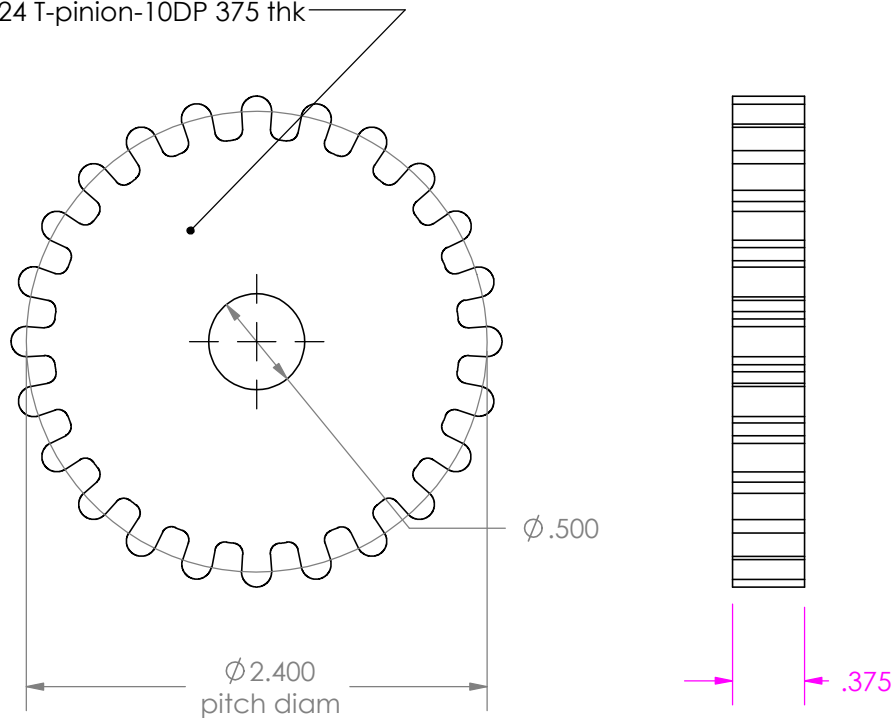



.375

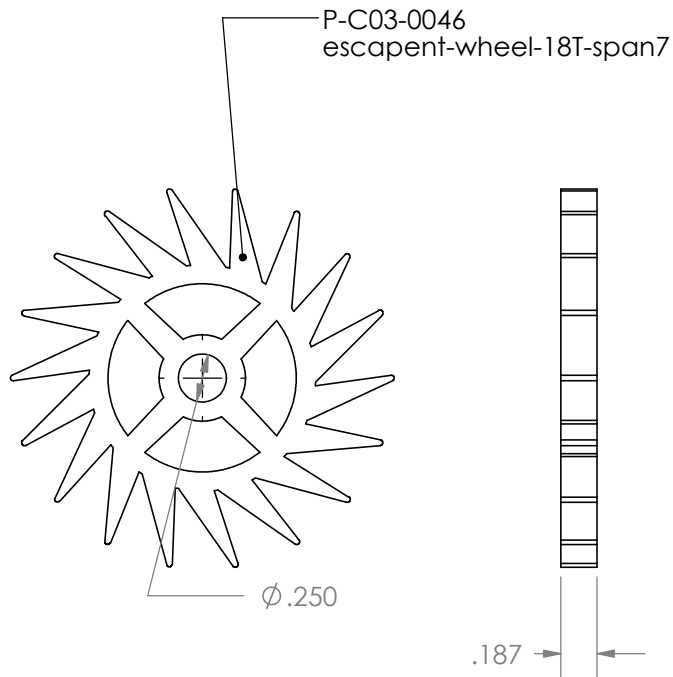
| | | | |
|--------------------|---|---|------------------------|
| 1 | prelim release | 12-Nov-04 | |
| REV | Description | DATE | |
| MATERIAL | Inch Dimensions |  | DESCRIPTION |
| FINISH | Tolerances ±.015" typ OK to scale drawing if box on right is to scale | | 10 T-pinion-10DP375thk |
| DRAWN by: G Mahony | Third Angle Projection |  | Project |
| DATE Drawn: | | Drawing # P-C03-0044 | Page 1 of 1 |

P-C03-0045

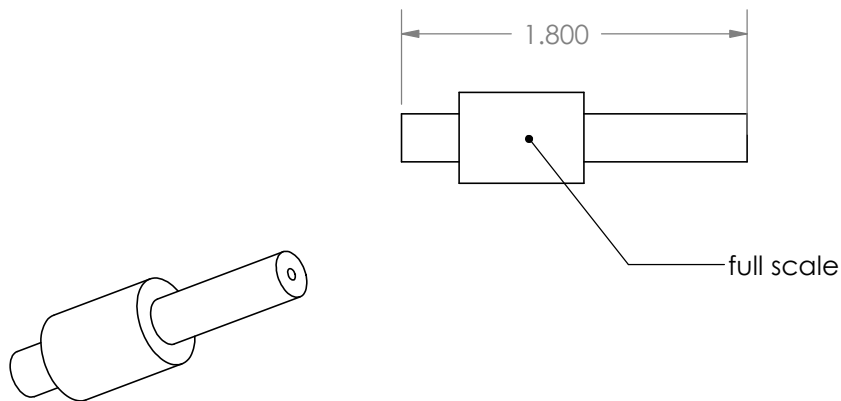
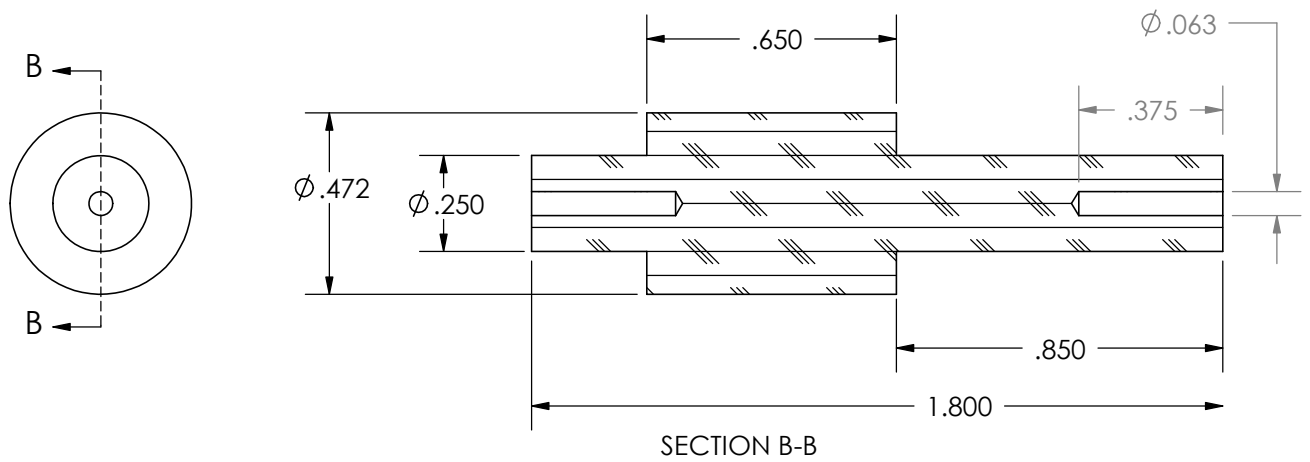
24 T-pinion-10DP 375 thk



| | | |
|--------------------|---|--------------------------|
| 1 | prelim release | 12-Nov-04 |
| REV | Description | DATE |
| MATERIAL | Inch Dimensions | DESCRIPTION |
| FINISH | Tolerances ±.015" typ | 24 T-pinion-10DP 375 thk |
| | OK to scale drawing if box on right is to scale | Project |
| DRAWN by: G Mahony | Third Angle Projection | Drawing # |
| DATE Drawn: |  | P-C03-0045 |

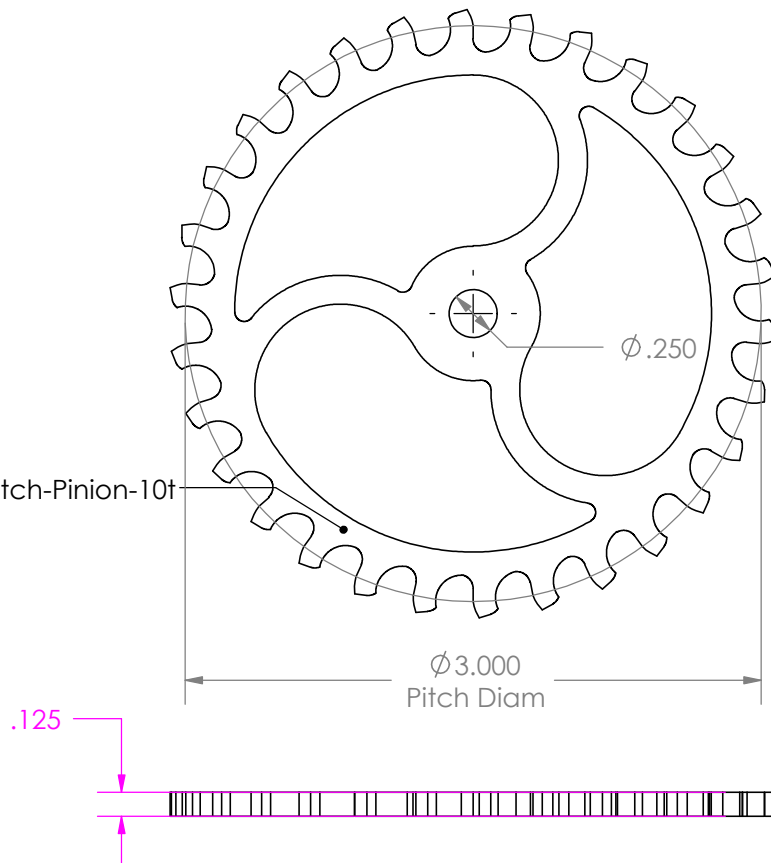



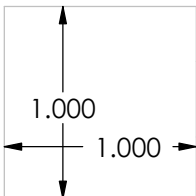
| | | | |
|---|--|---|-------------|
| 1 | prelim release | 16-Oct-04 | |
| REV | Description | DATE | |
| MATERIAL delrin FINISH none DRAWN by: G Mahony DATE Drawn: 16-Oct-04 | Inch Dimensions | DESCRIPTION escapent-wheel-18T-span7 | |
| | Tolerances $\pm .015"$ typ OK to scale drawing if box on right is to scale | Project clock 2003 | |
| | Third Angle Projection | Drawing # P-C03-0046 | Page 1 of 1 |

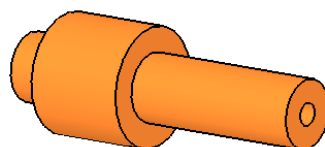
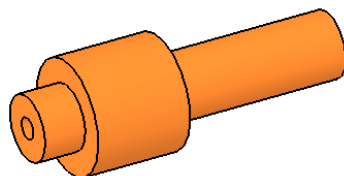
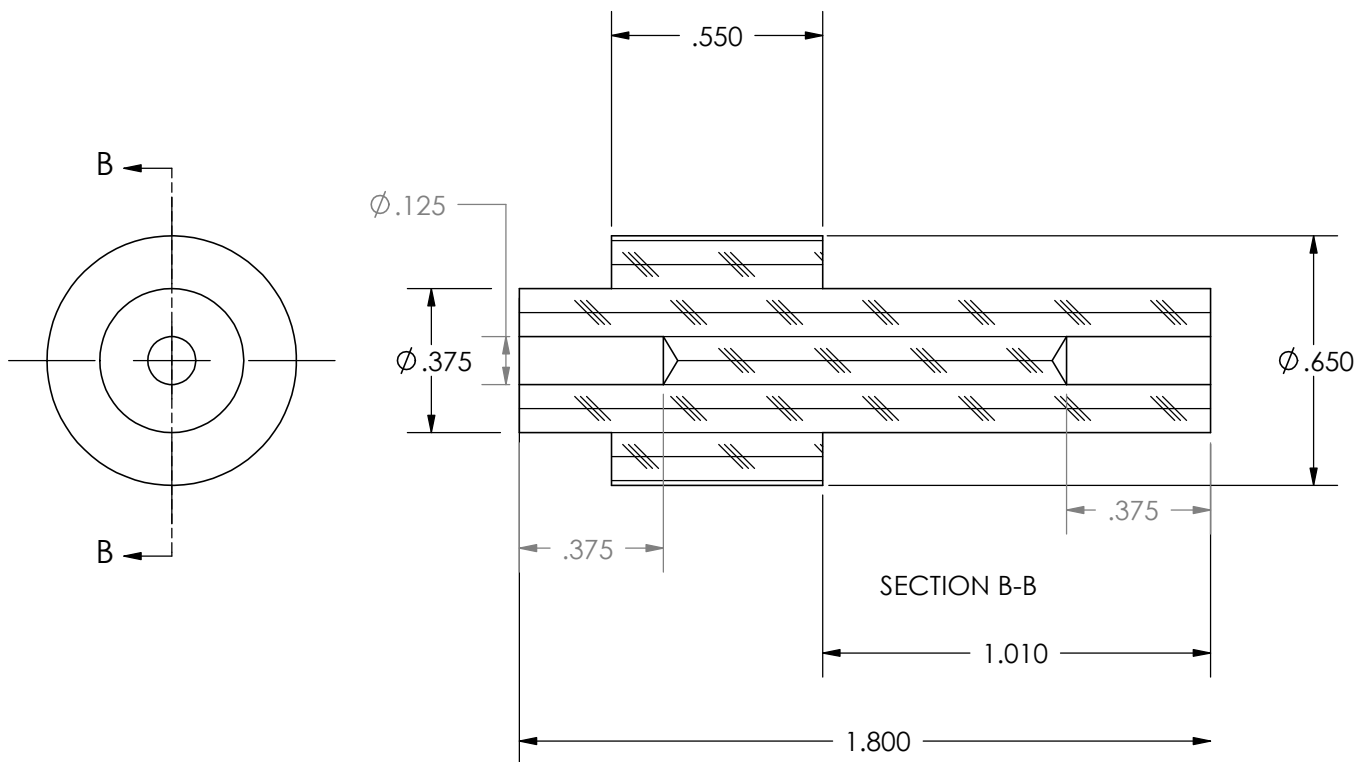



| | | |
|-----------------------|---|--------------------------------|
| 1 | prelim release | 16-Oct-04 |
| REV | Description | DATE |
| MATERIAL walnut | Inch Dimensions Tolerances ±.015" typ | DESCRIPTION shaft-intermed2 |
| FINISH oil | OK to scale drawing if box on right is to scale | Project clock2003 |
| DRAWN by: G Mahony | Third Angle Projection | Drawing # P-C03-0047 |
| DATE Drawn: 16-Oct-04 | | Page 1 of 1 |

P-C03-0048
30T-wheel-10DP-match-Pinion-10t

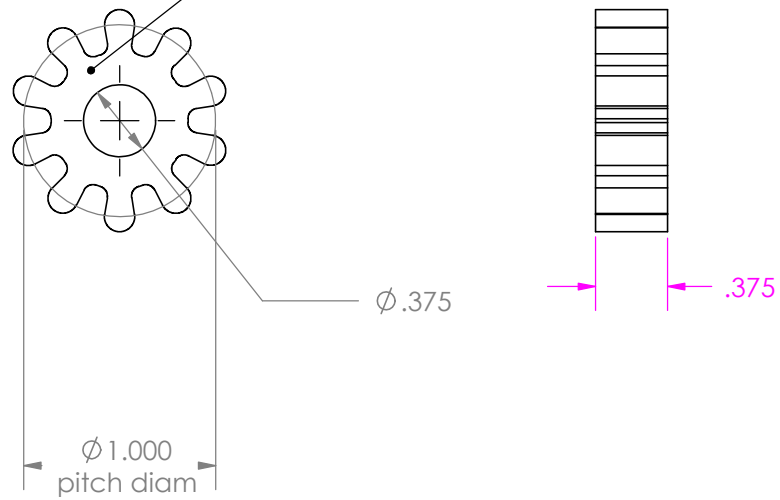


| | | |
|--------------------|---|---------------------------------|
| 1 | prelim release | 12-Nov-04 |
| REV | Description | DATE |
| MATERIAL | Inch Dimensions | DESCRIPTION |
| FINISH | Tolerances ±.015" typ | 30T-wheel-10DP-match-Pinion-10t |
| | OK to scale drawing if box on right is to scale | Project |
| DRAWN by: G Mahony | Third Angle Projection | Drawing # |
| DATE Drawn: |  | P-C03-0048 |
| |  | Page 1 of 1 |

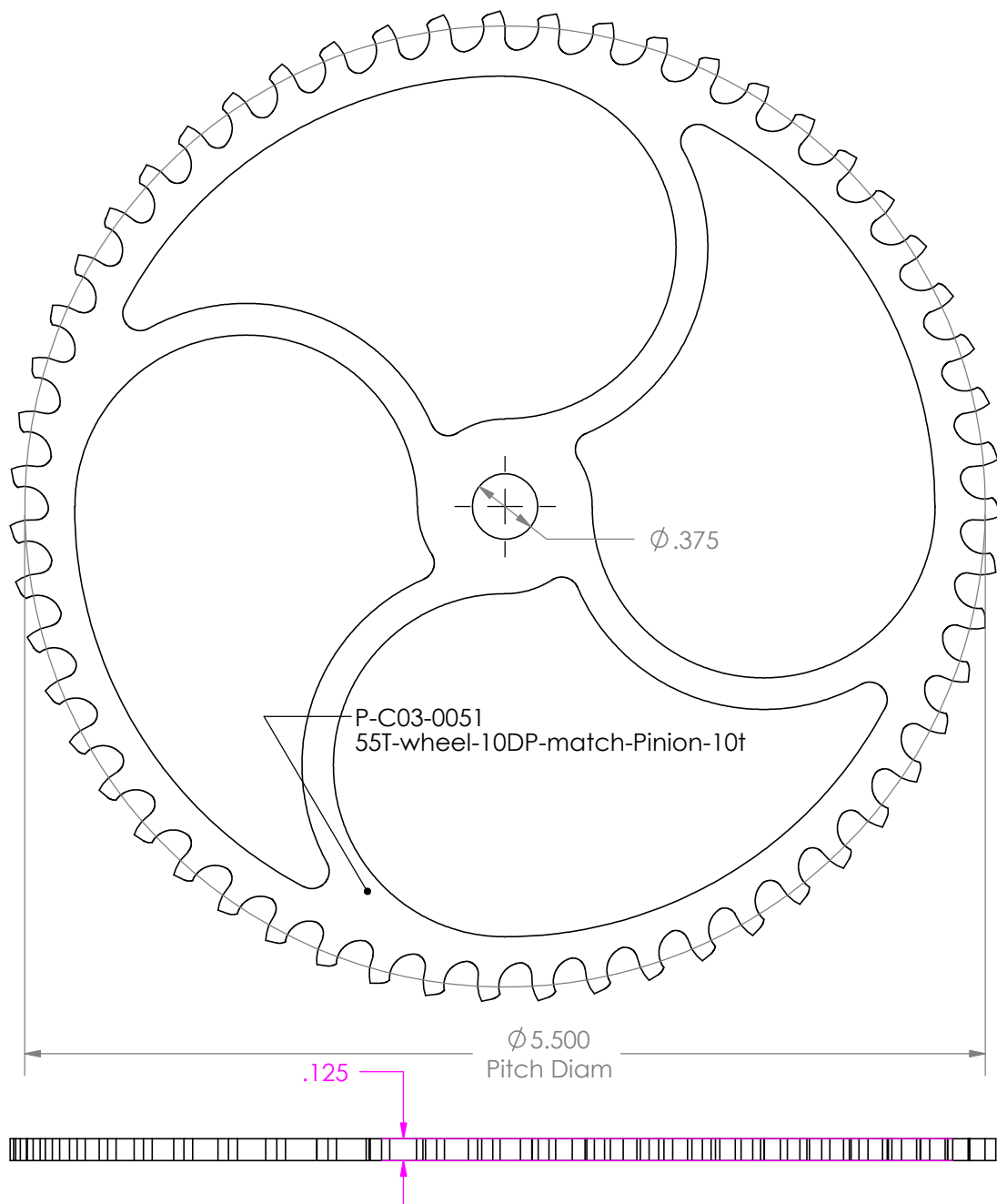


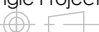
| | | |
|-----------------------|---|---------------------------------|
| 1 | prelim release | 16-Oct-04 |
| REV | Description | DATE |
| MATERIAL walnut | Inch Dimensions Tolerances $\pm .015"$ typ | DESCRIPTION shaft-intermed-3 |
| FINISH oil | OK to scale drawing if box on right is to scale | Project clock 2003 |
| DRAWN by: G Mahony | Third Angle Projection | Drawing # P-C03-0049 |
| DATE Drawn: 16-Oct-04 |  | Page 1 of 1 |

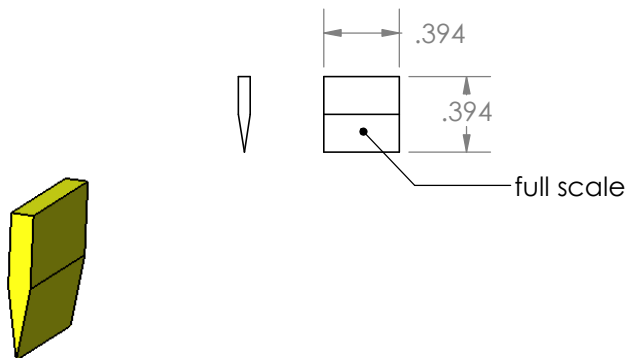
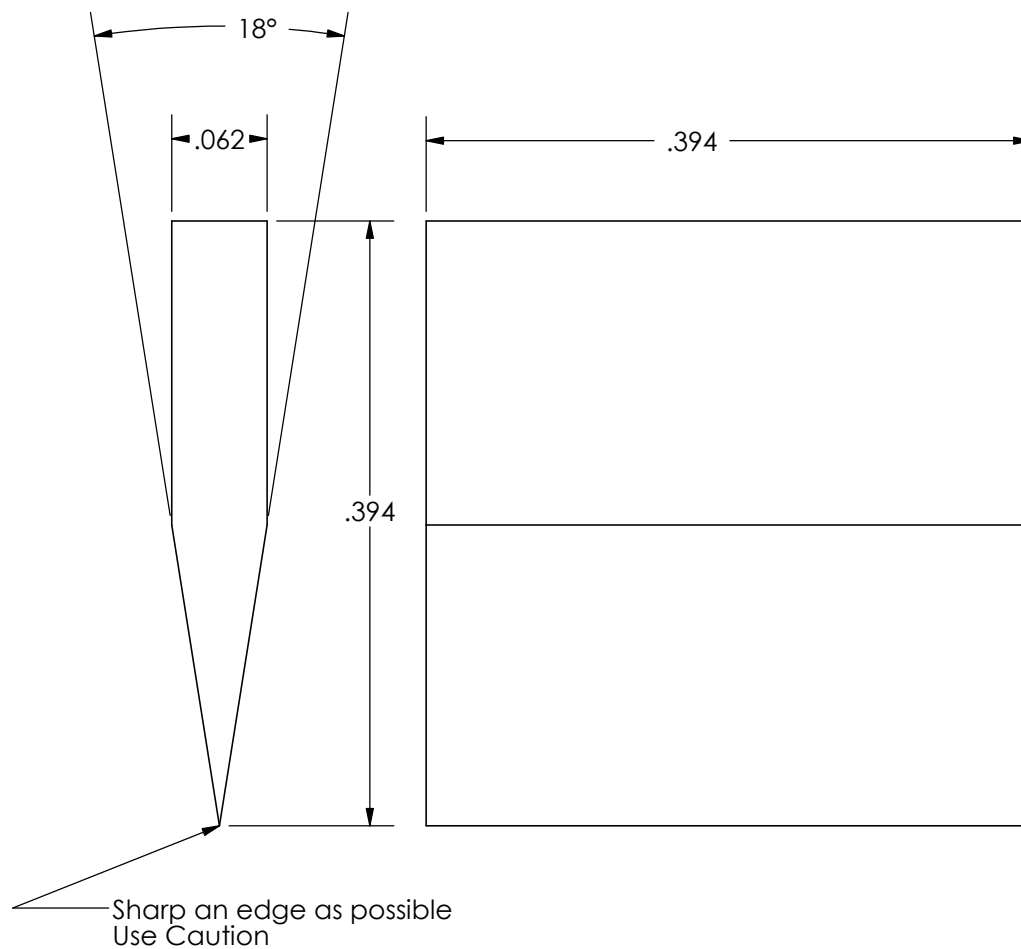
P-C03-0050
10 T-pinion-10DP375thk-10shft



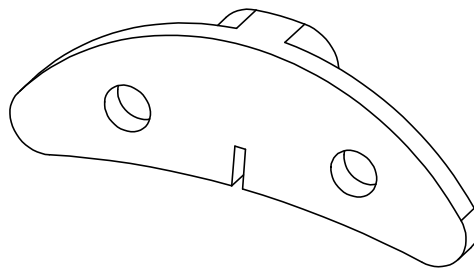
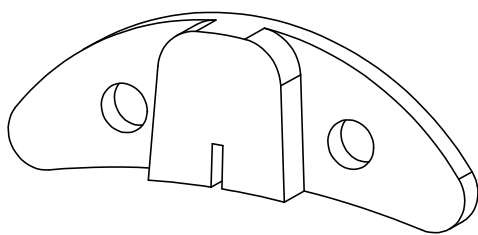
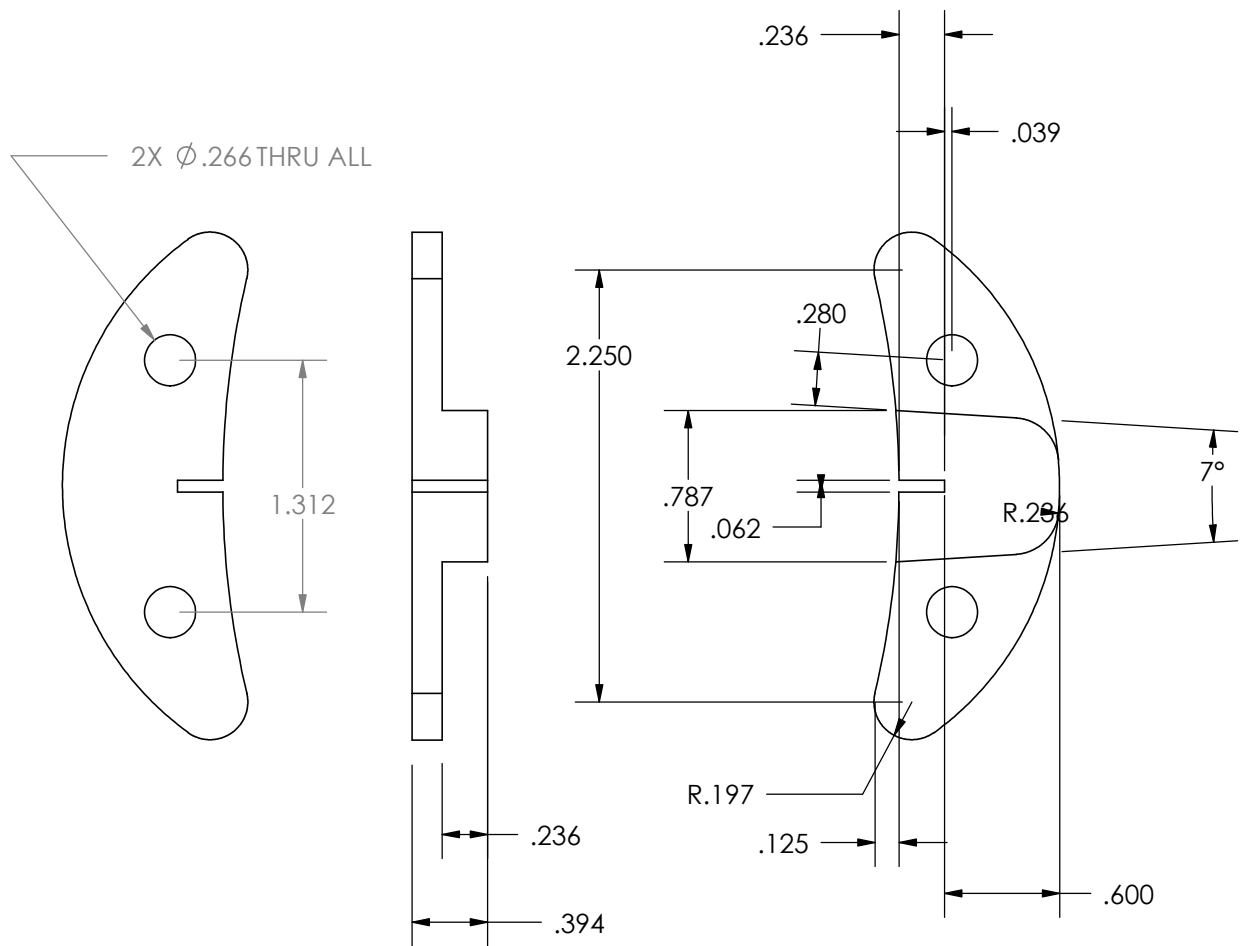
| | | |
|--------------------|---|-------------------------------|
| 1 | prelim release | 12-Nov-04 |
| REV | Description | DATE |
| MATERIAL | Inch Dimensions | DESCRIPTION |
| FINISH | Tolerances ±.015" typ | 10 T-pinion-10DP375thk-10shft |
| DRAWN by: G Mahony | OK to scale drawing if box on right is to scale | Project |
| DATE Drawn: | Third Angle Projection | Drawing # P-C03-0050 |
| | 1.000 1.000 | Page 1 of 1 |

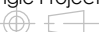


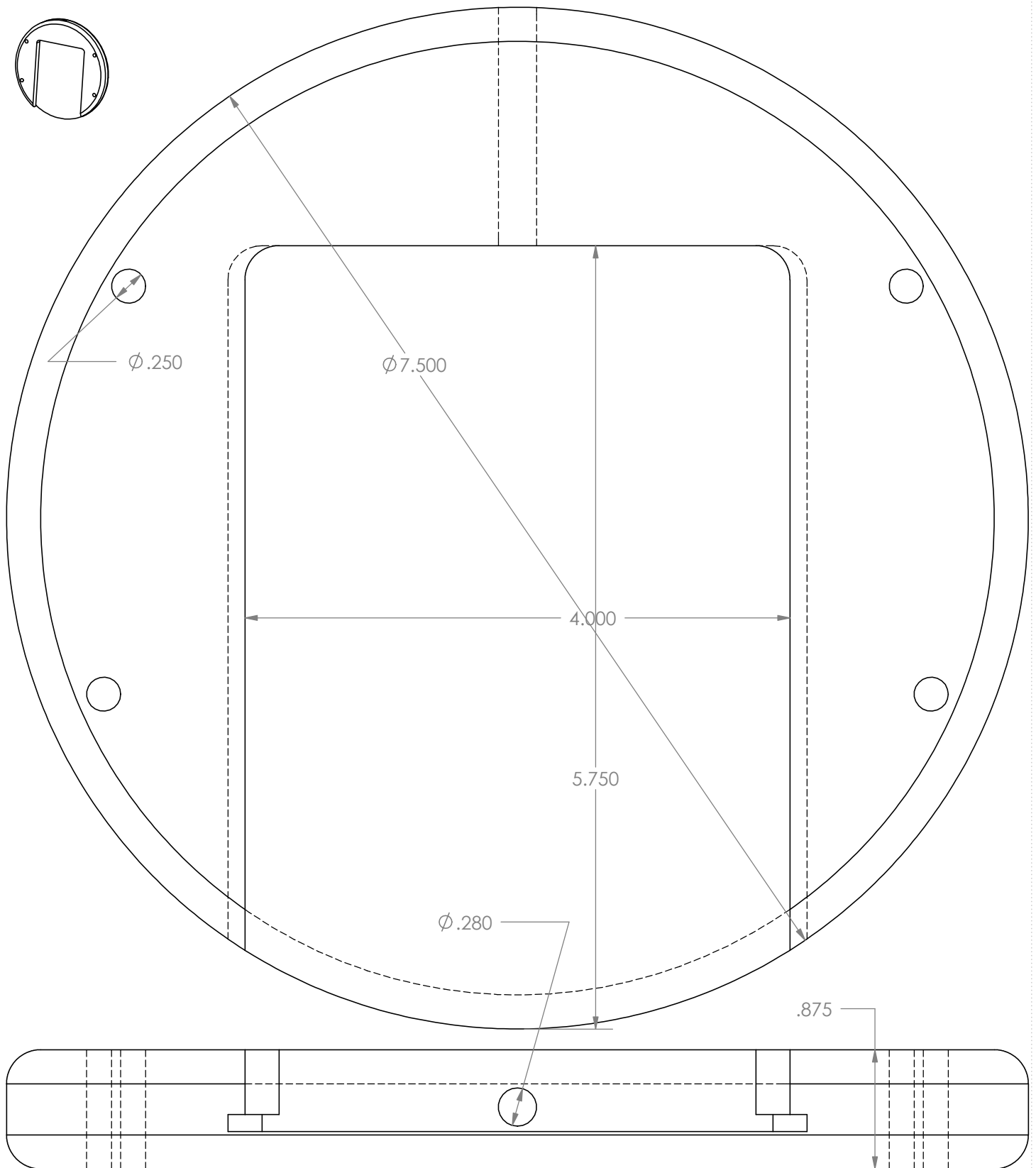
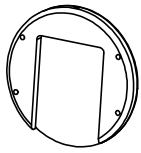
| | | |
|--------------------|---|---------------------------------|
| 1 | prelim release | 12-Nov-04 |
| REV | Description | DATE |
| MATERIAL | Inch Dimensions | DESCRIPTION |
| FINISH | Tolerances ±.015" typ | 55T-wheel-10DP-match-Pinion-10t |
| | OK to scale drawing if box on right is to scale | Project |
| DRAWN by: G Mahony | Third Angle Projection | Drawing # |
| DATE Drawn: |  | P-C03-0051 |



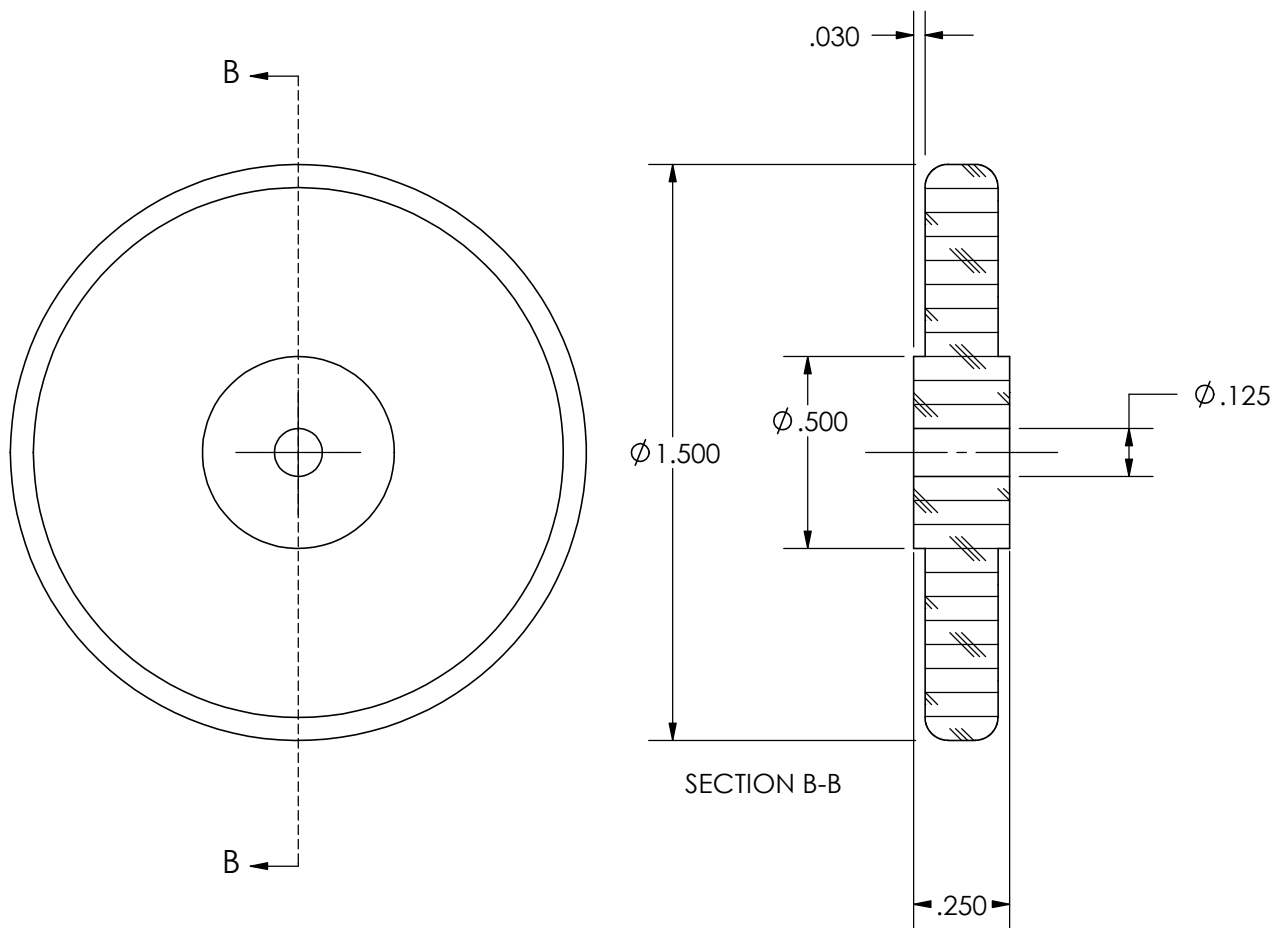
| | | | |
|---|---|-----------|-------------------------------|
| 1 | prelim release | 16-Oct-04 | |
| REV | Description | DATE | |
| MATERIAL steel | Inch Dimensions Tolerances ±.015" typ | | DESCRIPTION knife-pendulum |
| FINISH none | OK to scale drawing if box on right is to scale | | Project clock 2003 |
| DRAWN by: G Mahony DATE Drawn: 16-Oct-04 | Third Angle Projection | | Drawing # P-C03-0052 |
| | | | Page 1 of 1 |


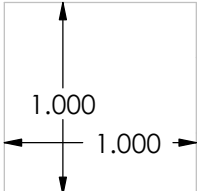


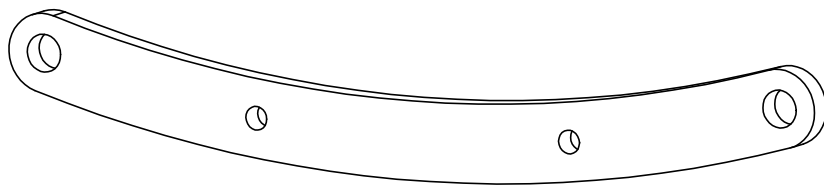
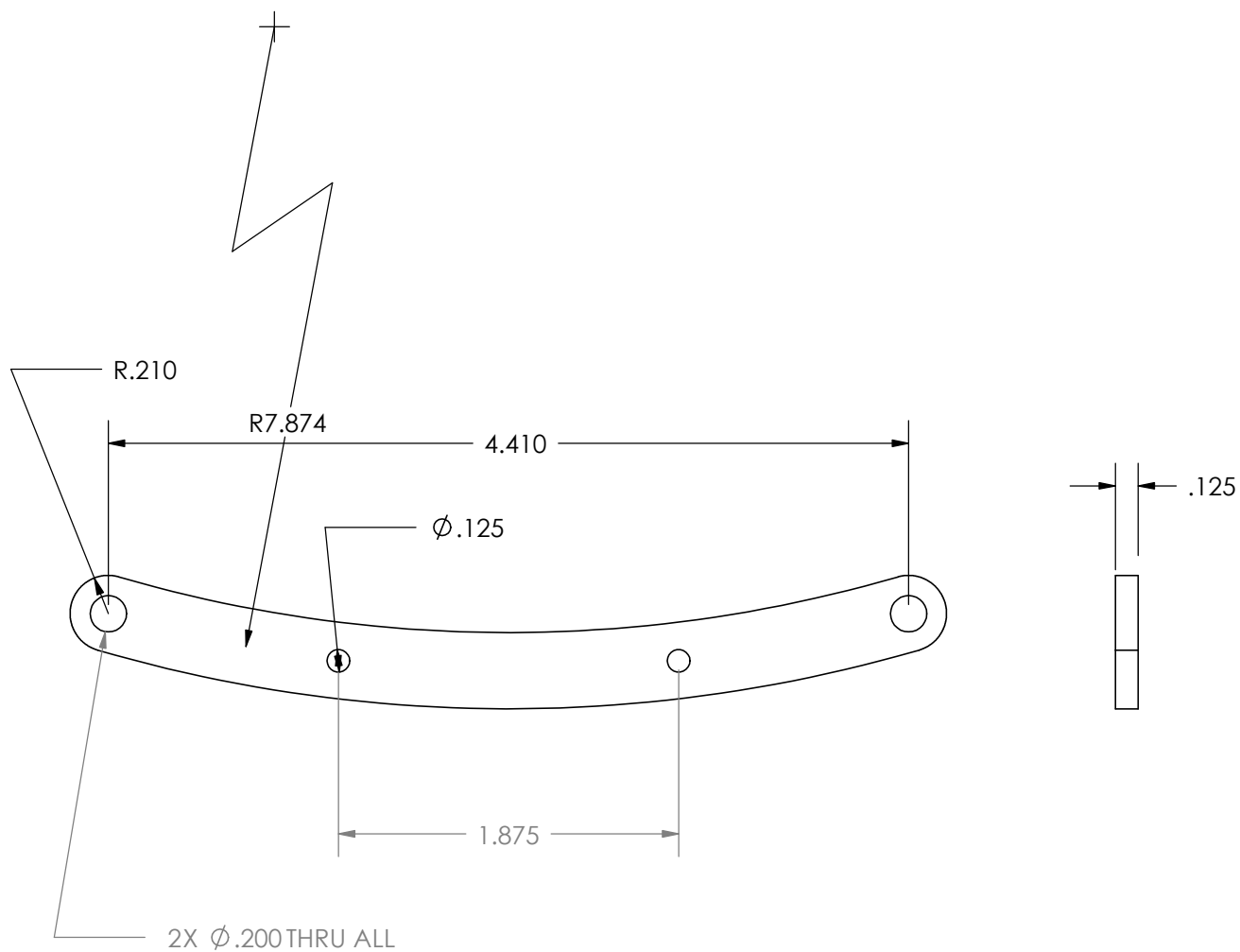
| | | |
|-----------------------|---|----------------------------------|
| 1 | prelim release | 16-Oct-04 |
| REV | Description | DATE |
| MATERIAL walnut | Inch Dimensions Tolerances $\pm .015"$ typ | DESCRIPTION pendulum-top-disc |
| FINISH oil | OK to scale drawing if box on right is to scale | Project clock 2003 |
| DRAWN by: G Mahony | Third Angle Projection | Drawing # P-C03-0053 |
| DATE Drawn: 16-Oct-04 |  | Page 1 of 1 |



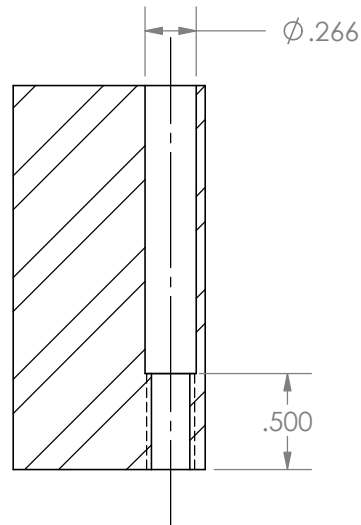
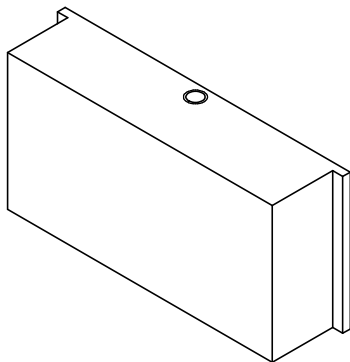
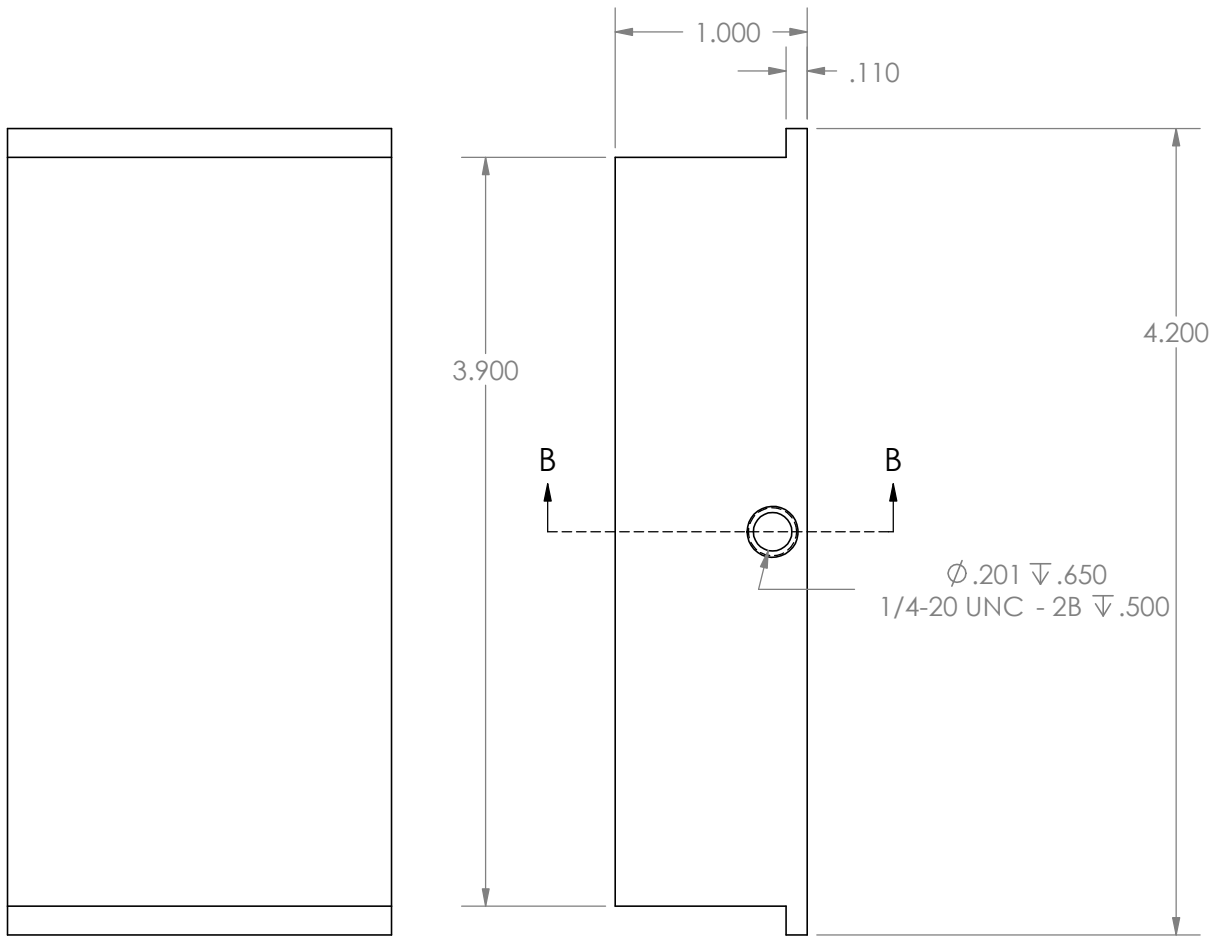
| | | |
|-----------------------|---|-------------------------------------|
| 1 | prelim release | 16-Oct-04 |
| REV | Description | DATE |
| MATERIAL walnut | Inch Dimensions Tolerances $\pm .015"$ typ | DESCRIPTION pendulum-bottom-disc |
| FINISH oil | OK to scale drawing if box on right is to scale | Project clock 2003 |
| DRAWN by: G Mahony | Third Angle Projection | Drawing # P-C03-0054 |
| DATE Drawn: 16-Oct-04 | | Page 1 of 1 |



| | | |
|---|---|---------------------------------------|
| 1 | prelim release | 16-Oct-04 |
| REV | Description | DATE |
| MATERIAL walnut | Inch Dimensions Tolerances $\pm .015$ " typ | DESCRIPTION pendulum-striker-wheel |
| FINISH oil | OK to scale drawing if box on right is to scale | Project clock 2003 |
| DRAWN by: G Mahony DATE Drawn: 16-Oct-04 | Third Angle Projection  | Drawing # P-C03-0055 |
| |  | Page 1 of 1 |

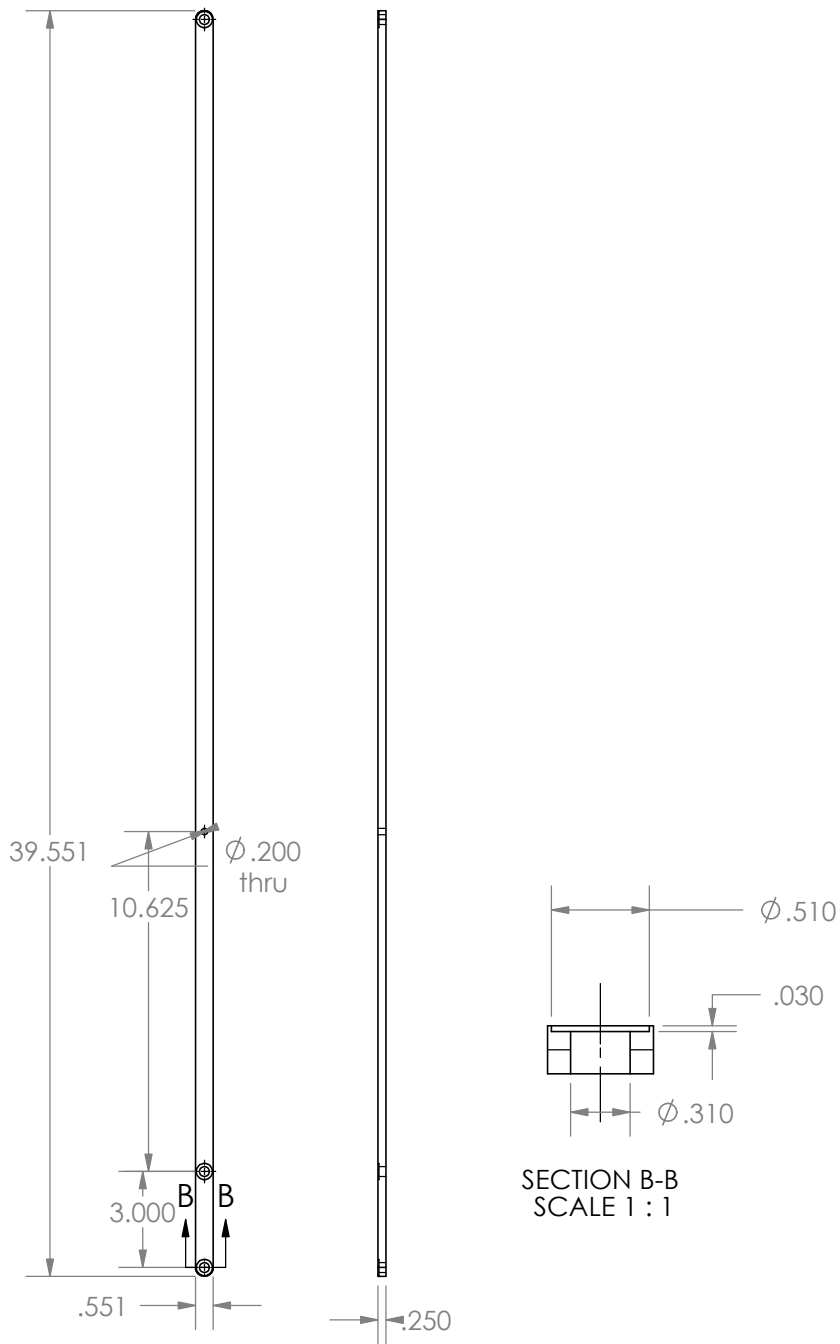



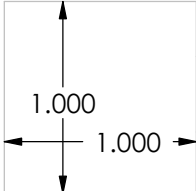
| | | |
|---|---|---|
| 1 | prelim release | 16-Oct-04 |
| REV | Description | DATE |
| MATERIAL brass | Inch Dimensions Tolerances ±.015" typ | DESCRIPTION pendulum-contact-cross-plate |
| FINISH none | OK to scale drawing if box on right is to scale | Project clock 2003 |
| DRAWN by: G Mahony DATE Drawn: 16-Oct-04 | Third Angle Projection | Drawing # P-C03-0056 |
| | | Page 1 of 1 |

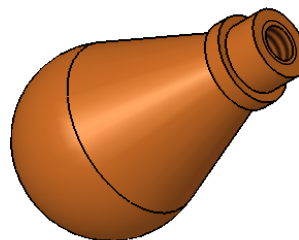
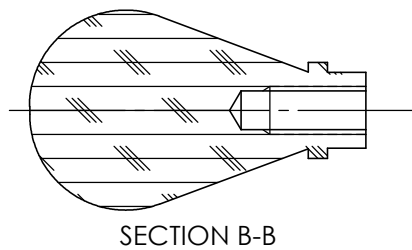
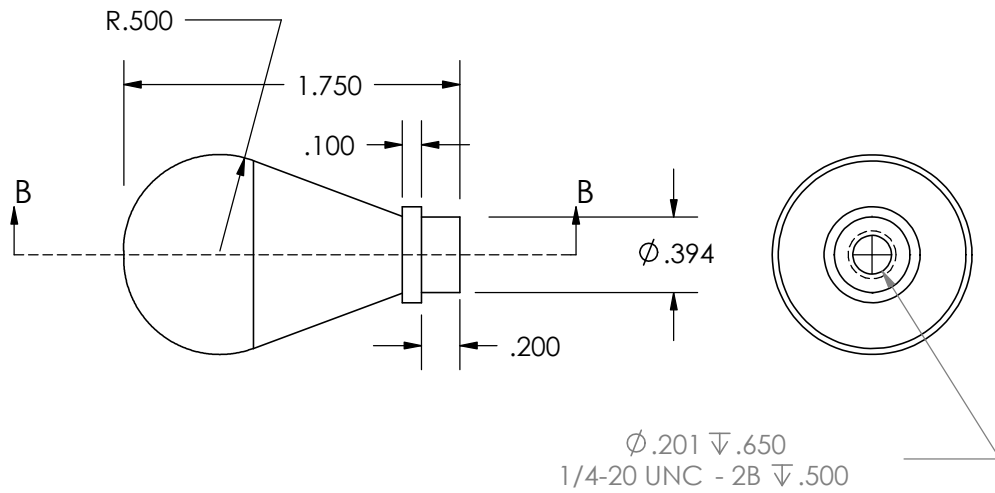


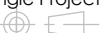
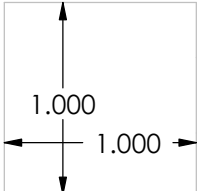
SECTION B-B

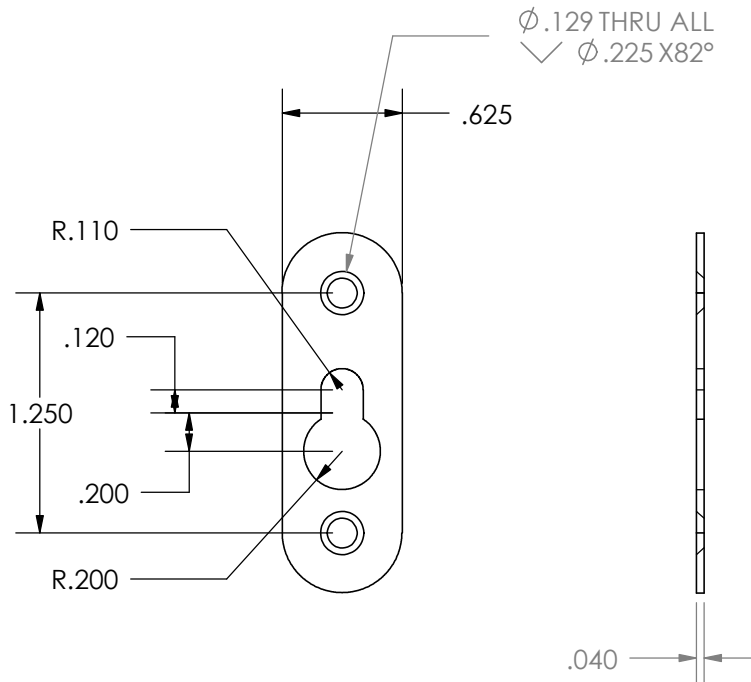
| | | | |
|-----------------------|---|-------------------------|--------------------------------|
| 1 | prelim release | 16-Oct-04 | |
| REV | Description | DATE | |
| MATERIAL steel | Inch Dimensions Tolerances $\pm .015$ " typ | | DESCRIPTION pendulum-weight |
| FINISH none | OK to scale drawing if box on right is to scale | | Project clock 2003 |
| DRAWN by: G Mahony | Third Angle Projection | Drawing # P-C03-0057 | Page 1 of 1 |
| DATE Drawn: 16-Oct-04 | | | |


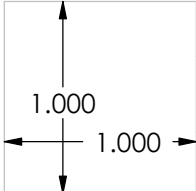


| | | |
|--|--|---|
| 1 | prelim release | 16-Oct-04 |
| REV | Description | DATE |
| MATERIAL walnut FINISH oil DRAWN by: G Mahony DATE Drawn: 16-Oct-04 | Inch Dimensions Tolerances $\pm .015$ " typ OK to scale drawing if box on right is to scale Third Angle Projection | DESCRIPTION pendulum-stick Project clock 2003 Drawing # P-C03-0058 |
| |  | Page 1 of 1 |
| |  | |

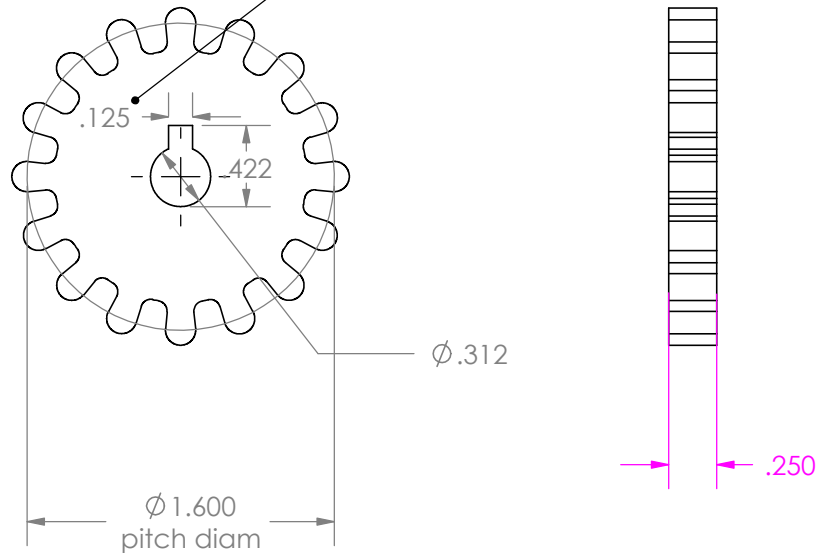



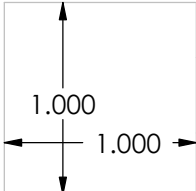
| | | |
|---|---|---|
| 1 | prelim release | 16-Oct-04 |
| REV | Description | DATE |
| MATERIAL walnut | Inch Dimensions Tolerances $\pm .015"$ typ | DESCRIPTION pendulum-adjust-rod-handle |
| FINISH oil | OK to scale drawing if box on right is to scale | Project clock 2003 |
| DRAWN by: G Mahony DATE Drawn: 16-Oct-04 | Third Angle Projection  | Drawing # P-C03-0060 |
| |  | Page 1 of 1 |

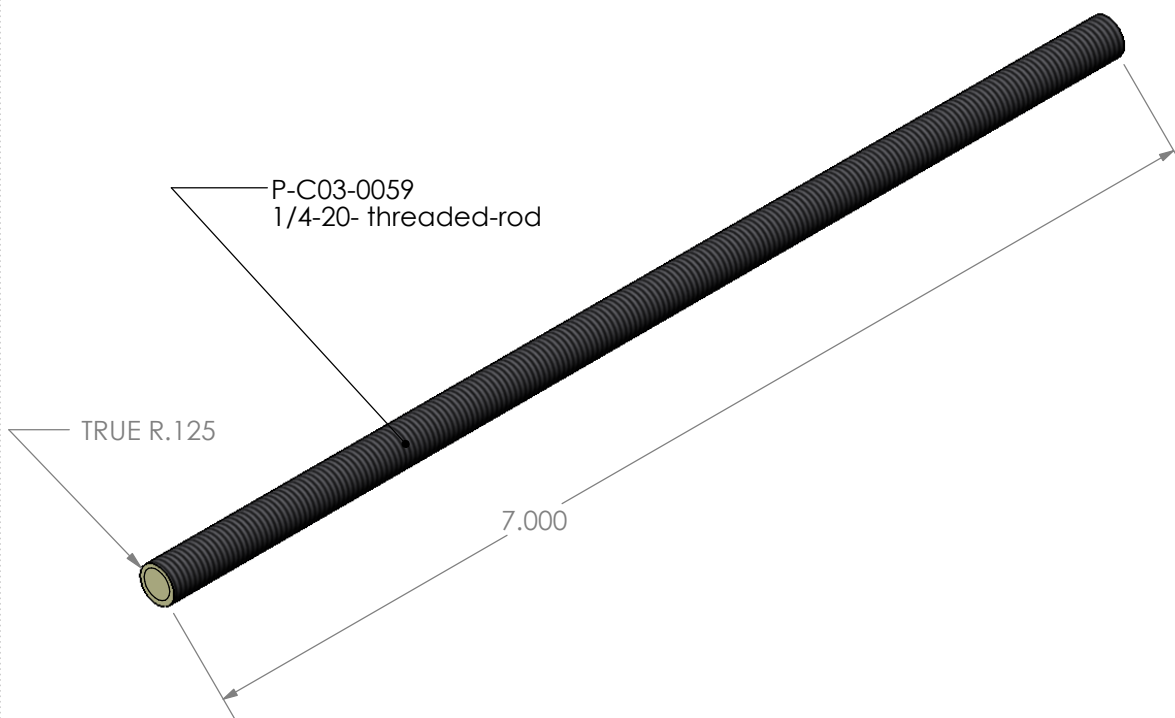
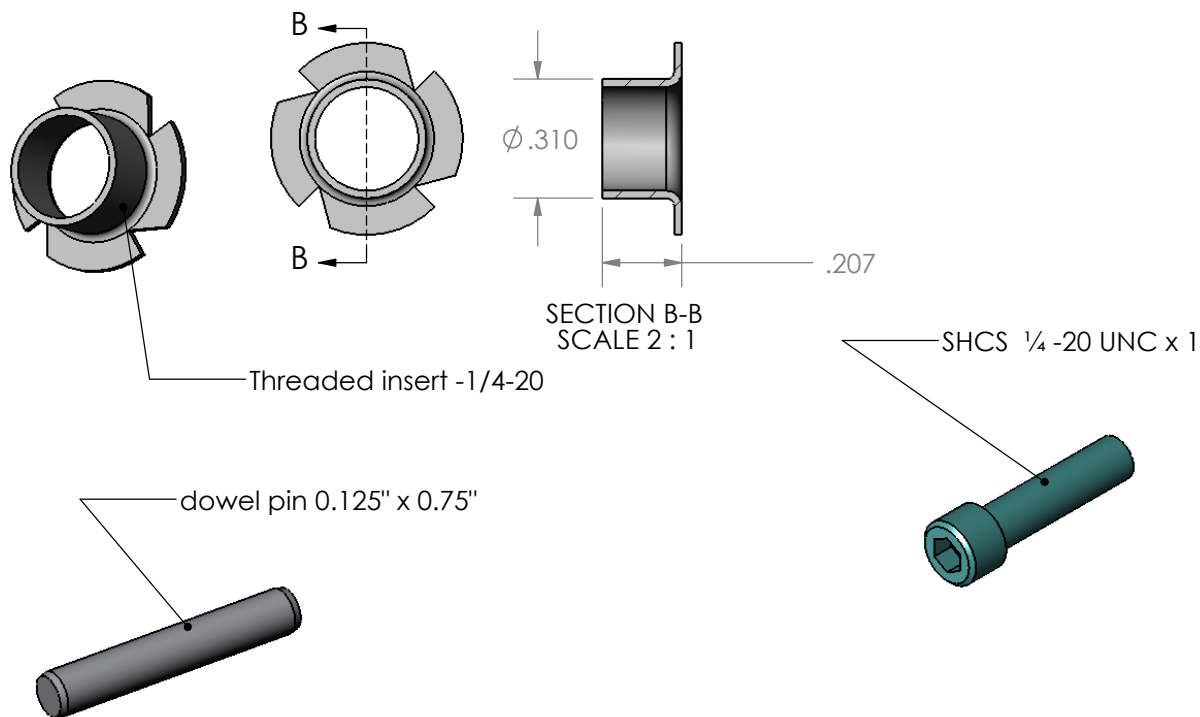


| | | | |
|---|----------------|---|---|
| 1 | prelim release | 22 Oct 04 | |
| REV | Description | DATE | |
| MATERIAL steel-or brass FINISH none DRAWN by: G Mahony DATE Drawn: 22-Oct-04 | | Inch Dimensions Tolerances $\pm .015"$ typ OK to scale drawing if box on right is to scale Third Angle Projection | DESCRIPTION wall mount plate Project clock 2003 Drawing # P-C03-0062 |
| | |   | Page 1 of 1 |

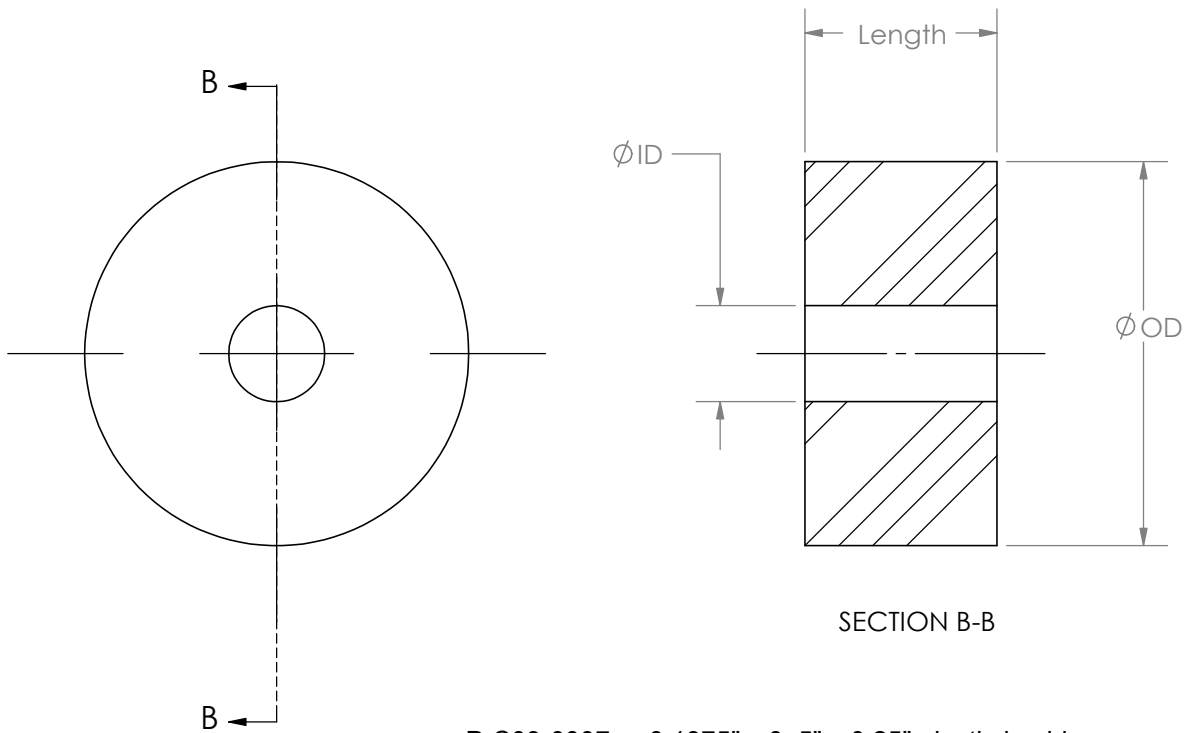
P-C03-0063
16T-pinion-10DP-250thk-w-key



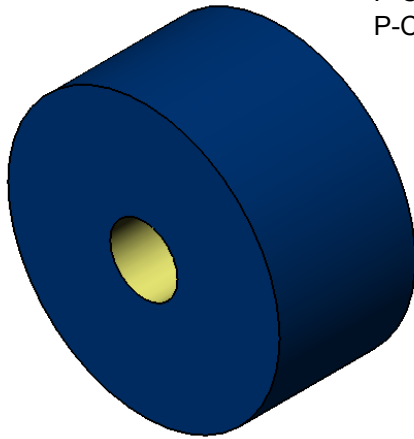
| | | |
|--------------------|---|------------------------------|
| 1 | prelim release | 12-Nov-04 |
| REV | Description | DATE |
| MATERIAL | Inch Dimensions | DESCRIPTION |
| FINISH | Tolerances ±.015" typ | 16T-pinion-10DP-250thk-w-key |
| | OK to scale drawing if box on right is to scale | Project |
| DRAWN by: G Mahony | Third Angle Projection | Drawing # |
| DATE Drawn: |  | P-C03-0063 |
| |  | Page 1 of 1 |


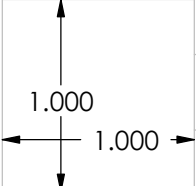


| | | | |
|--------------------|---|--|-------------------|
| 1 | prelim release | | |
| REV | Description | | DATE |
| MATERIAL | Inch Dimensions | | DESCRIPTION |
| FINISH | Tolerances $\pm .015$ " typ | | Assorted Hardware |
| | OK to scale drawing if box on right is to scale | | Project |
| DRAWN by: G Mahony | Third Angle Projection | | Drawing # |
| DATE Drawn: | | | P-C03-0064 |



| | |
|------------|---|
| P-C03-0007 | 0.1875" x 0.5" x 0.25" plastic bushing |
| P-C03-0008 | 0.125"ID x 0.5"OD x 0.250"lg plastic bushing |
| P-C03-0009 | 0.125"ID x 0.375"OD x 0.25"lg plastic bushing |
| P-C03-0010 | .062" ID x .375 OD x .25"lg plastic bushing |
| P-C03-0011 | 0.125"ID x 0.5"OD x 0.25"lg plastic bushing |
| P-C03-0015 | 0.375"ID x 0.5"OD x 0.250"lg plastic bushing |
| P-C03-0016 | 0.375"ID x 0.5"OD x 0.375"lg plastic bushing |



| | | | | |
|-------------------|--|---|---|---------------------------------|
| 1 | prelim | | | 24nov04 |
| REV | Description | | | DATE |
| MATERIAL Nylon | Inch Dimensions Tolerances ±.015" typ OK to scale drawing if box on right is to scale |  |  | DESCRIPTION Plastic Bushings |
| | | | | Project |
| | | | | Drawing # P-C03-0065 |
| DRAWN by: | Third Angle Projection | | | Page 1 of 1 |
| DATE Drawn: | | | | |