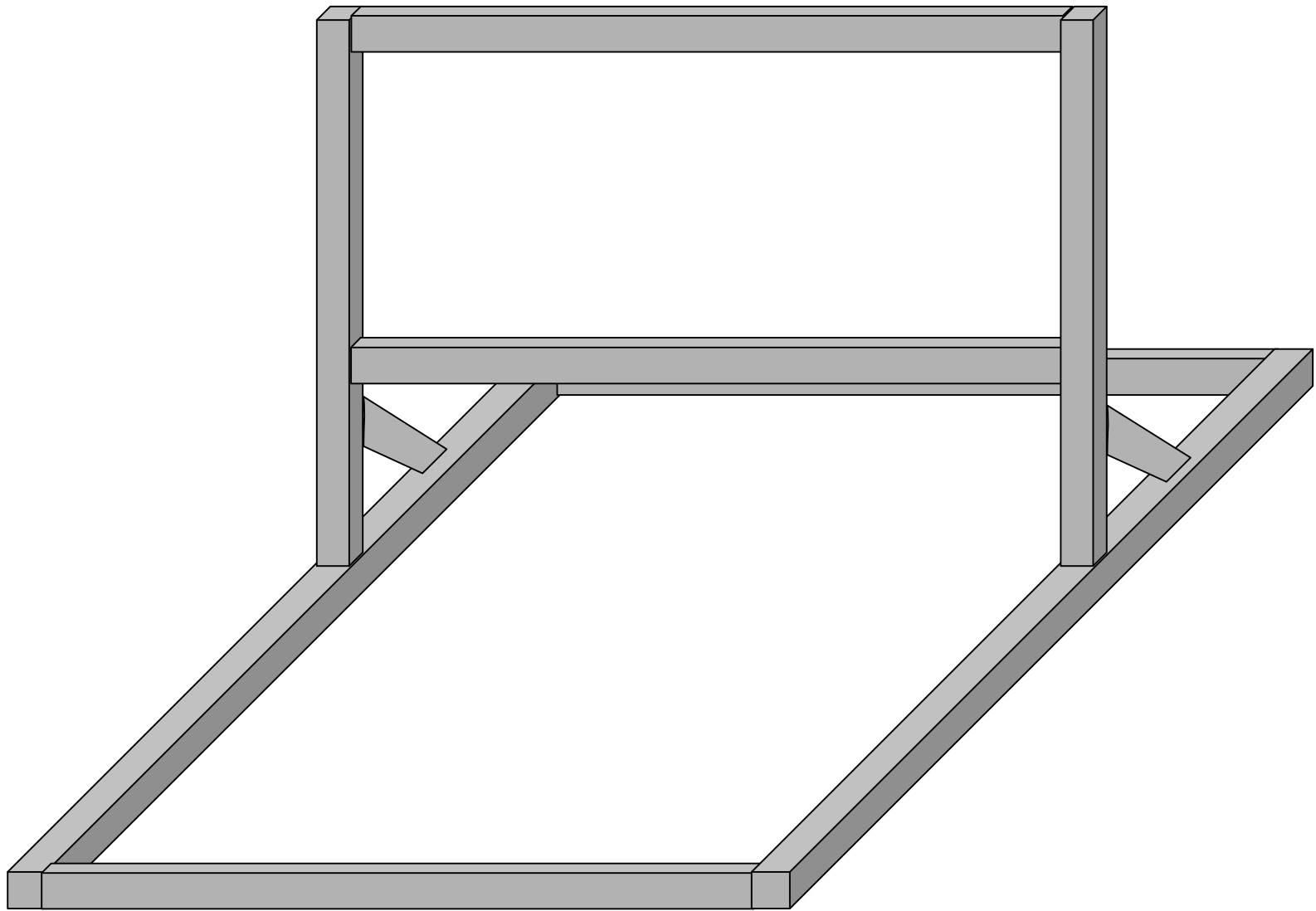
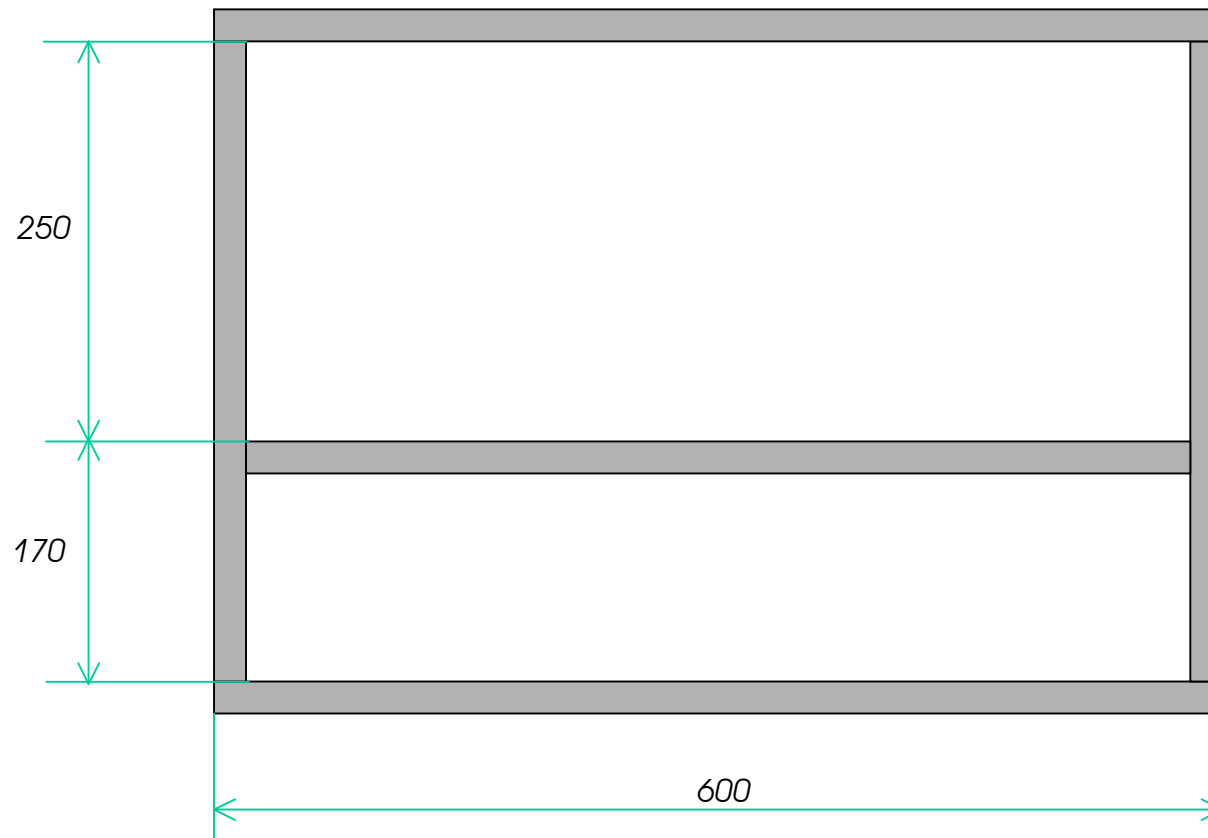


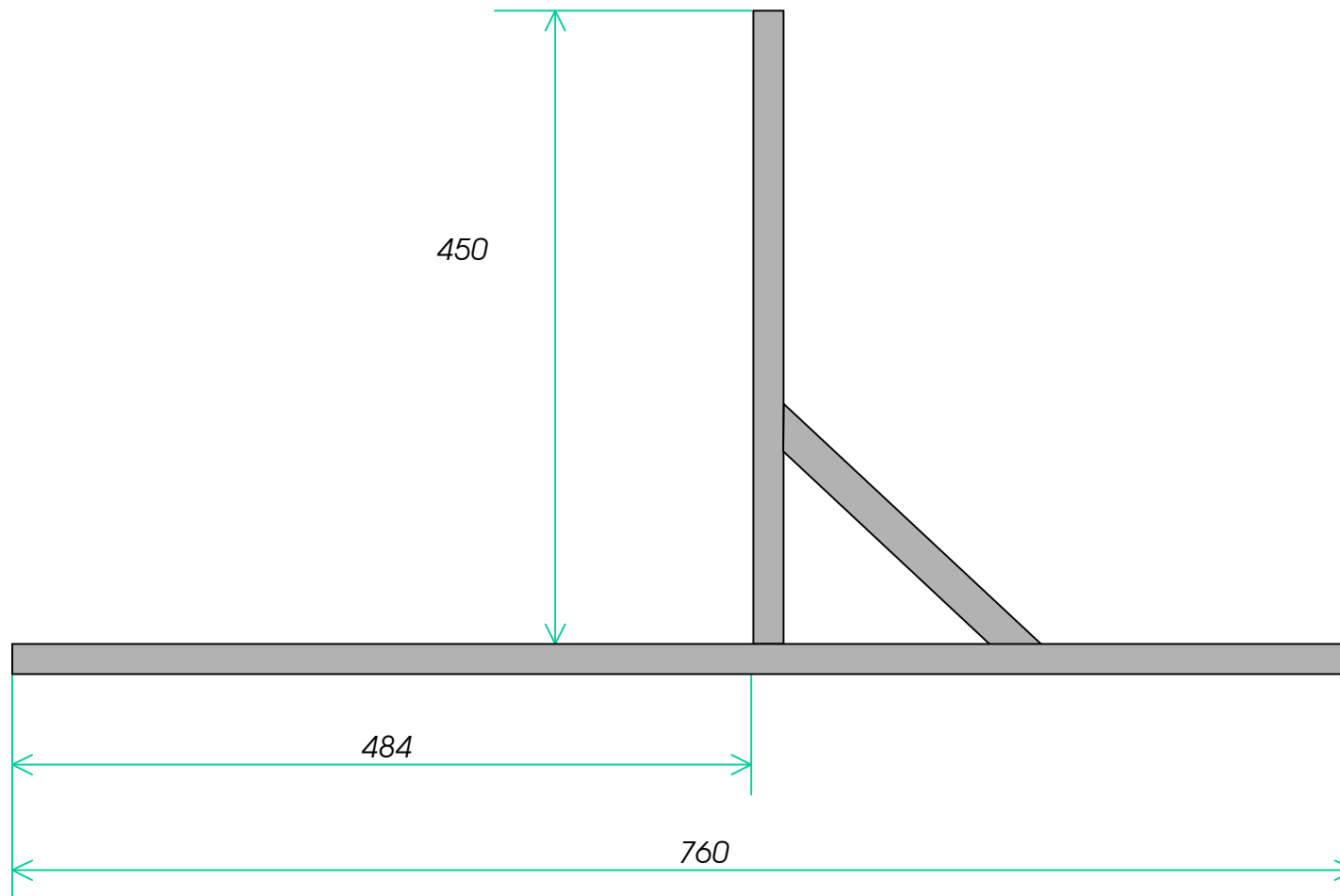
ESTRUTURA - VISÃO GERAL



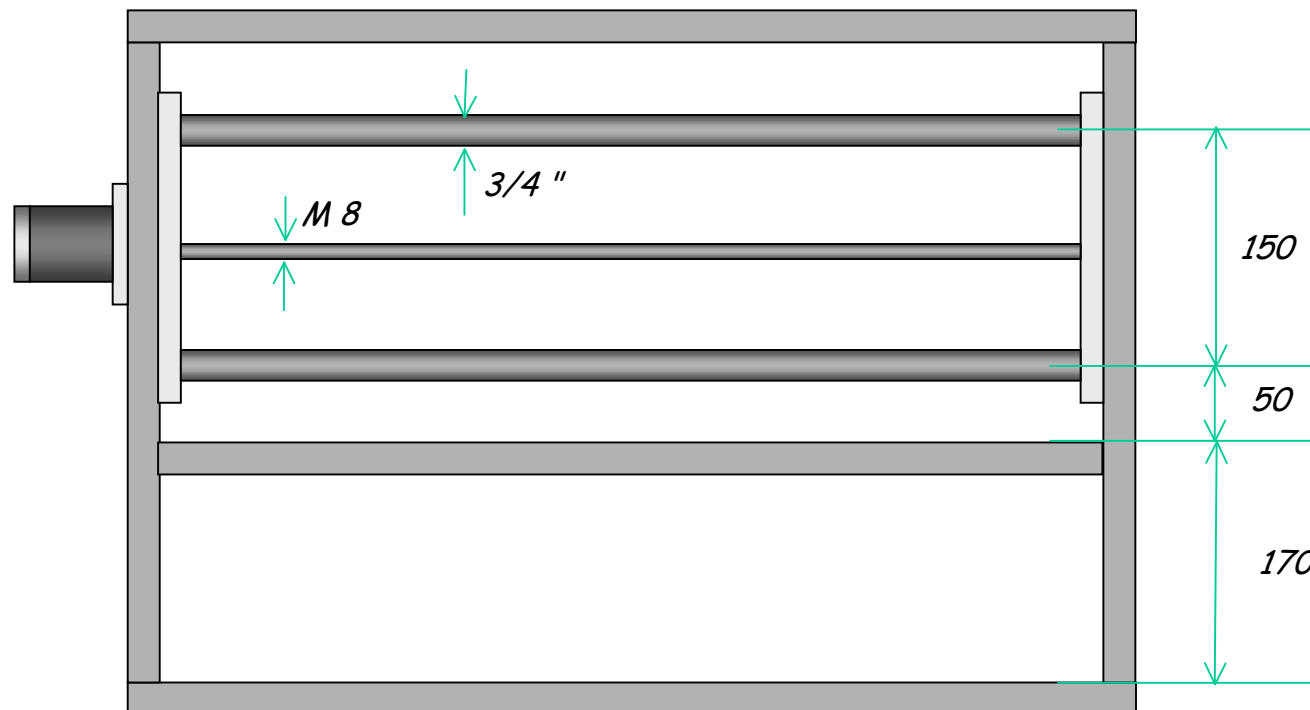
ESTRUTURA - VISÃO FRONTAL



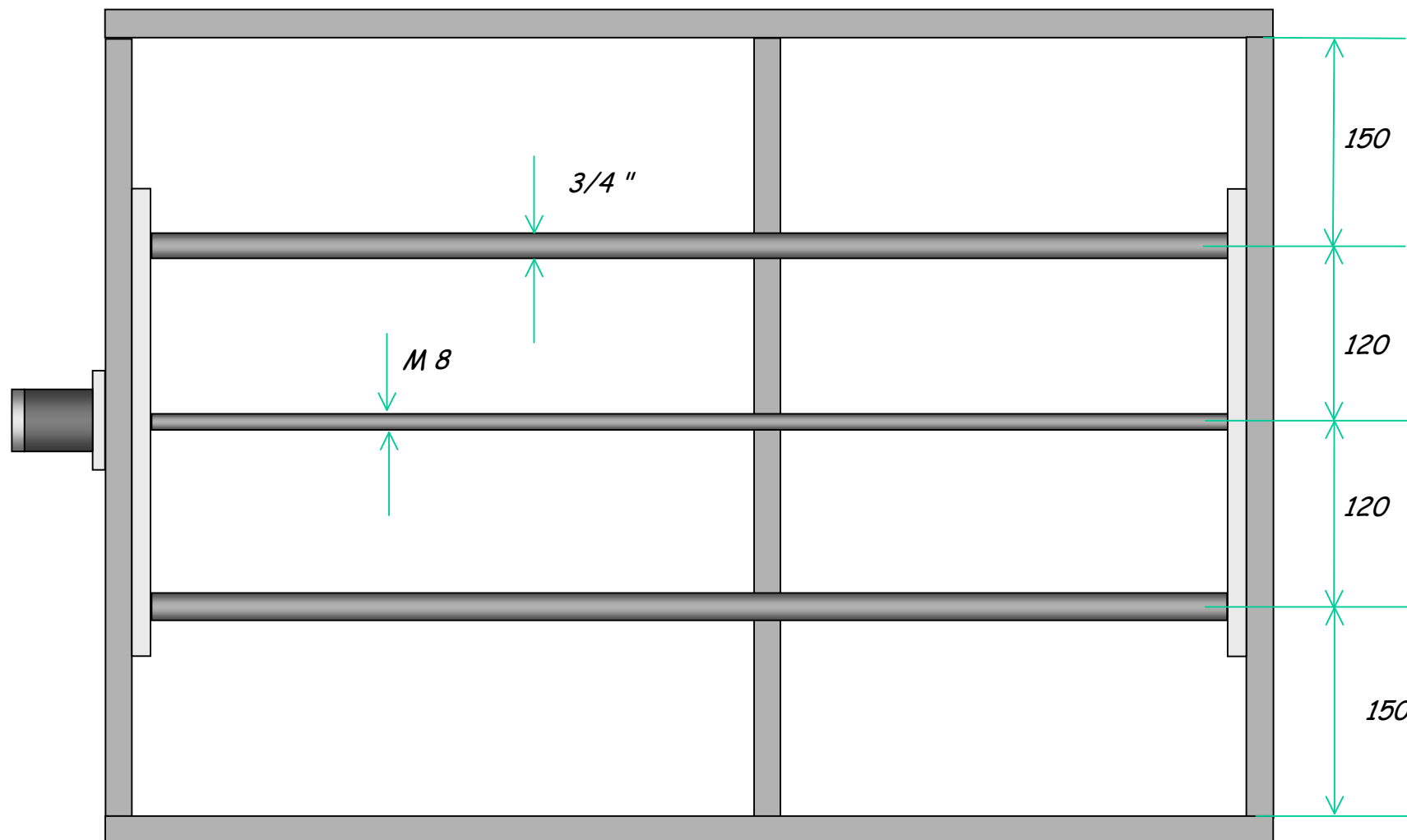
ESTRUTURA - VISÃO LATERAL



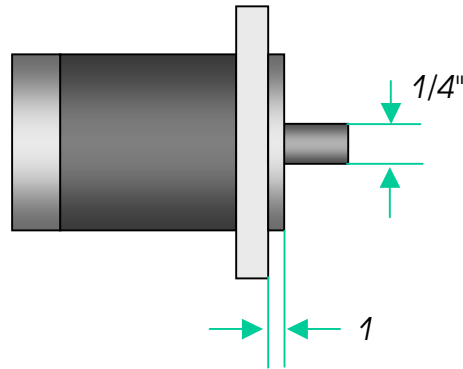
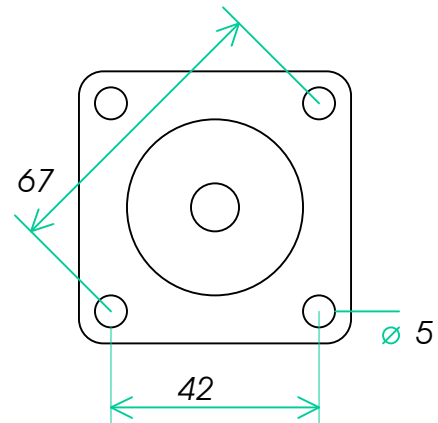
VISÃO FRONTAL - MOTOR E BARRAS - "EIXO Y"



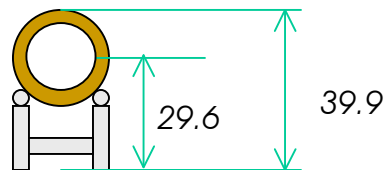
VISÃO INFERIOR - MOTOR E BARRAS "EIXO X"



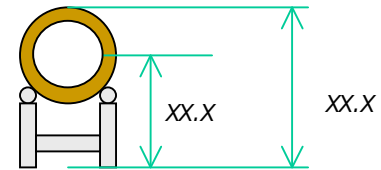
MOTOR



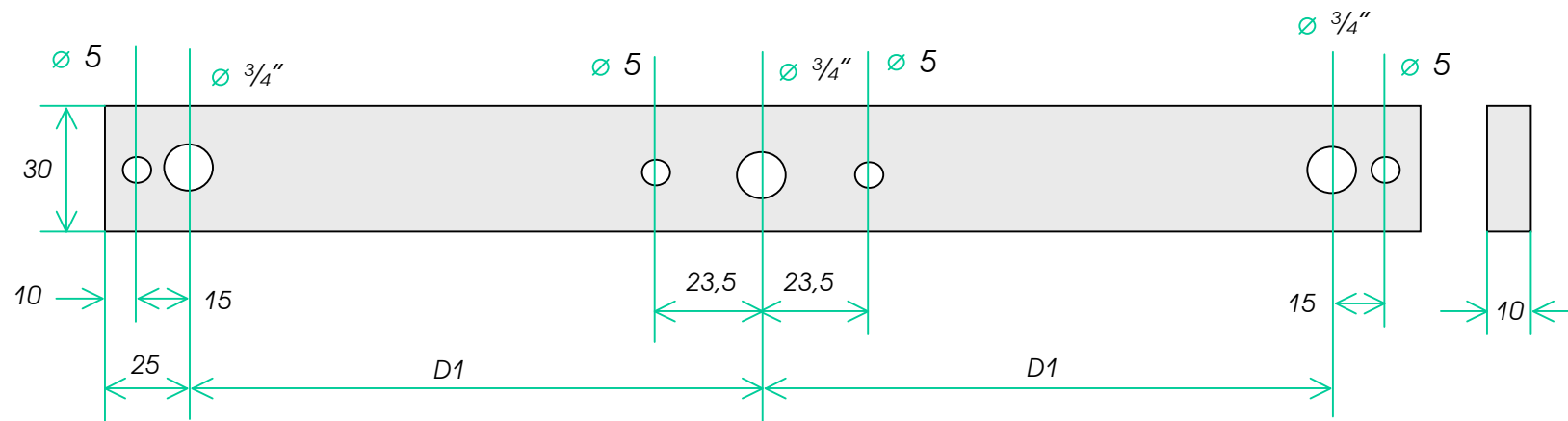
BUCHA 3/4" E TRILHO



BUCHA 1/2" E TRILHO



BARRAS DE SUPORTE – EIXOS X, Y E Z

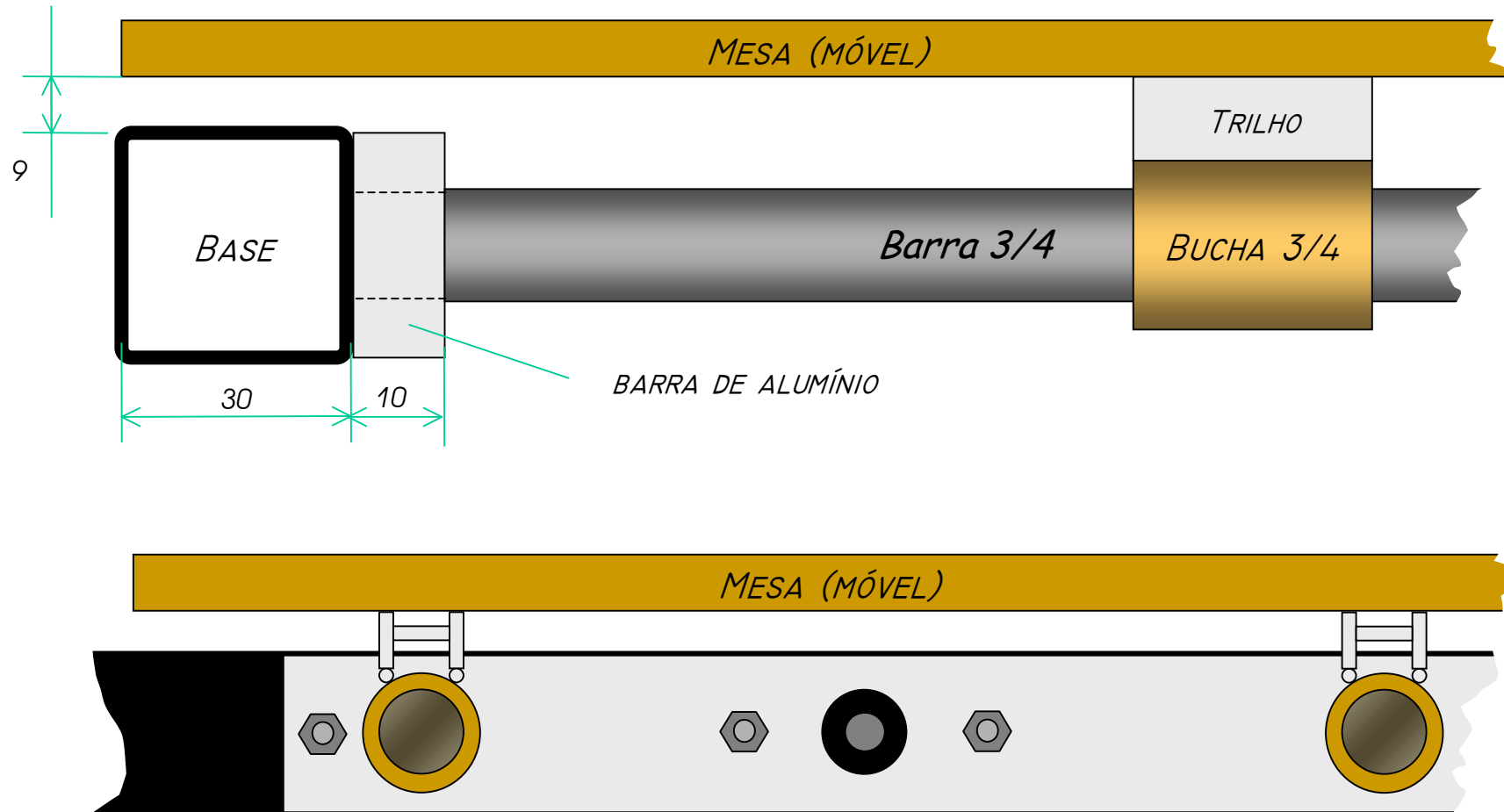


EIXO X - $DI = 120$

EIXO Y - $DI = 75$

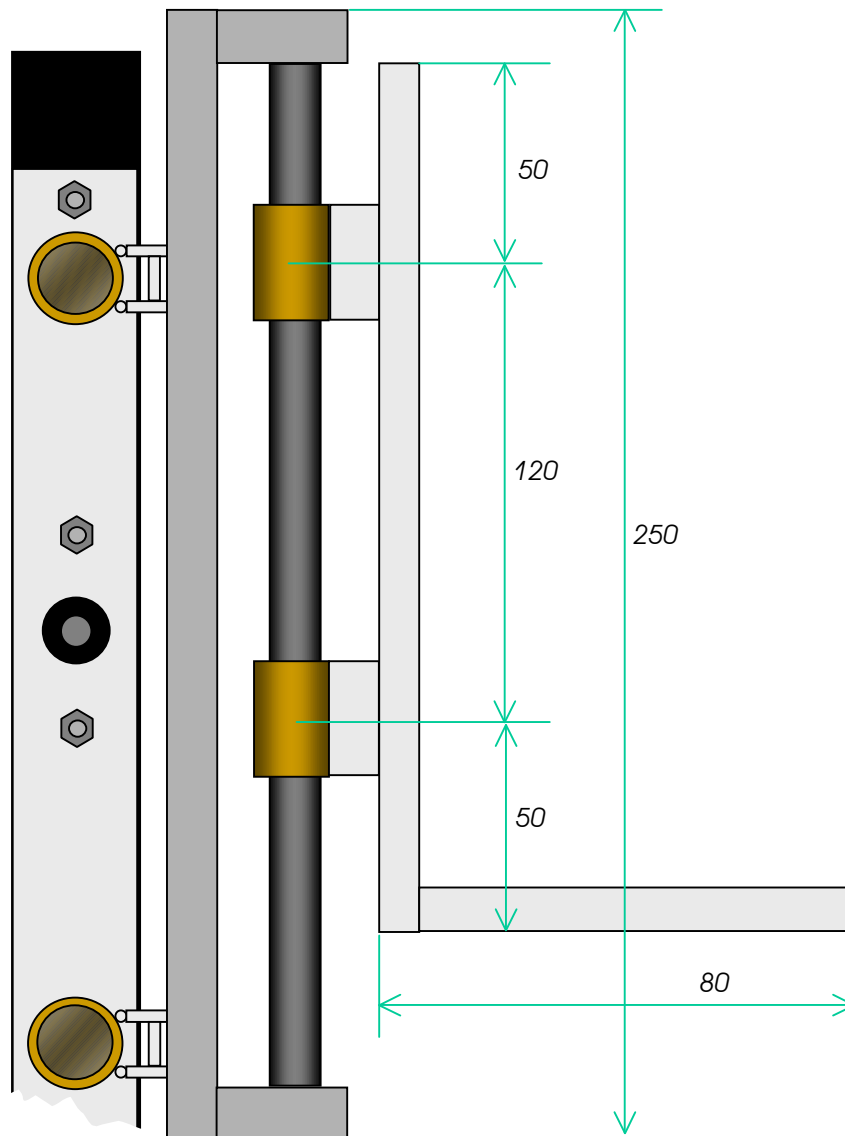
EIXO Z - $DI = 60$

BASE E MESA

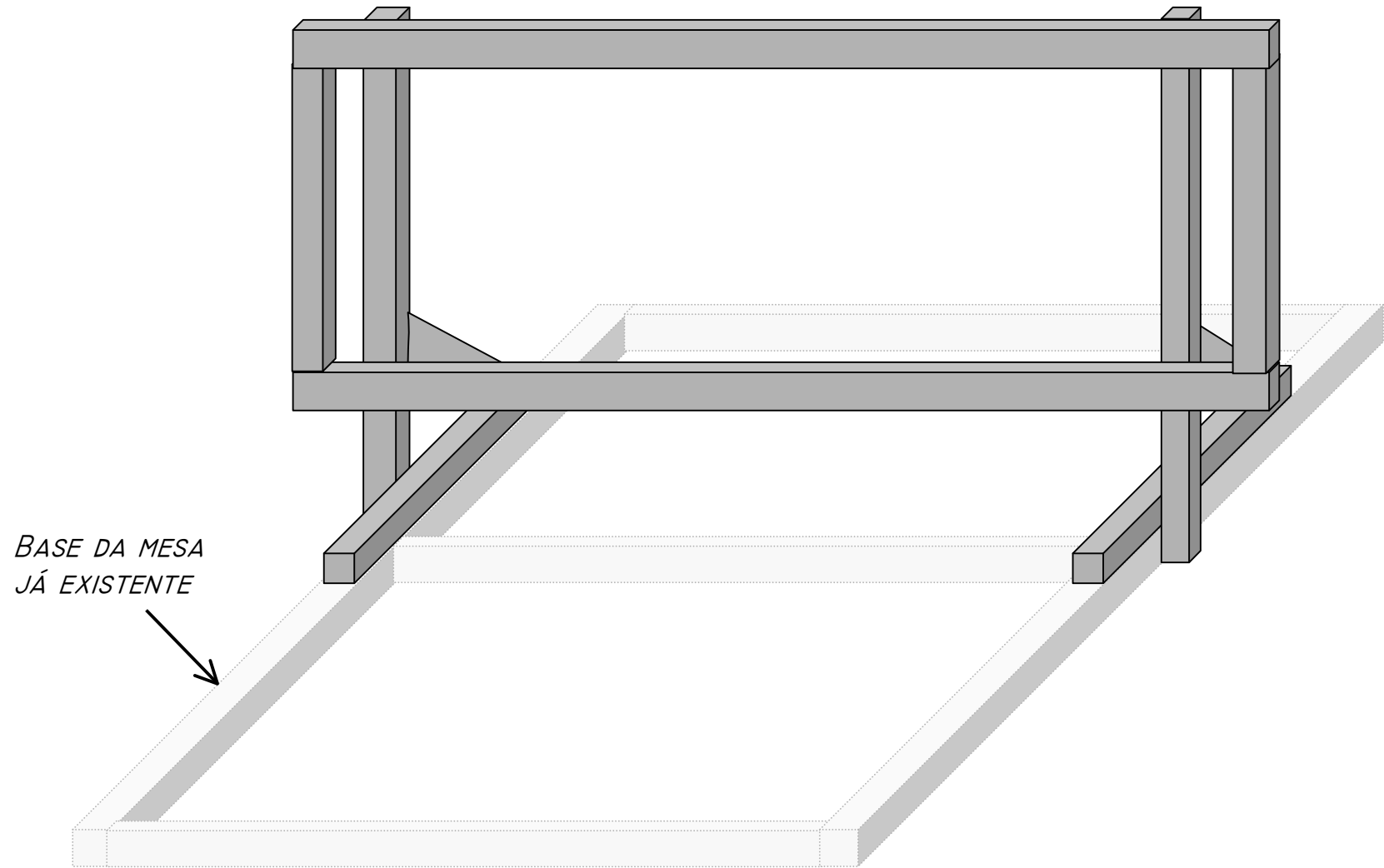


OBS: ESTE ESQUEMA DE FIXAÇÃO PODE SER USADO PARA OS EIXOS X E Y.

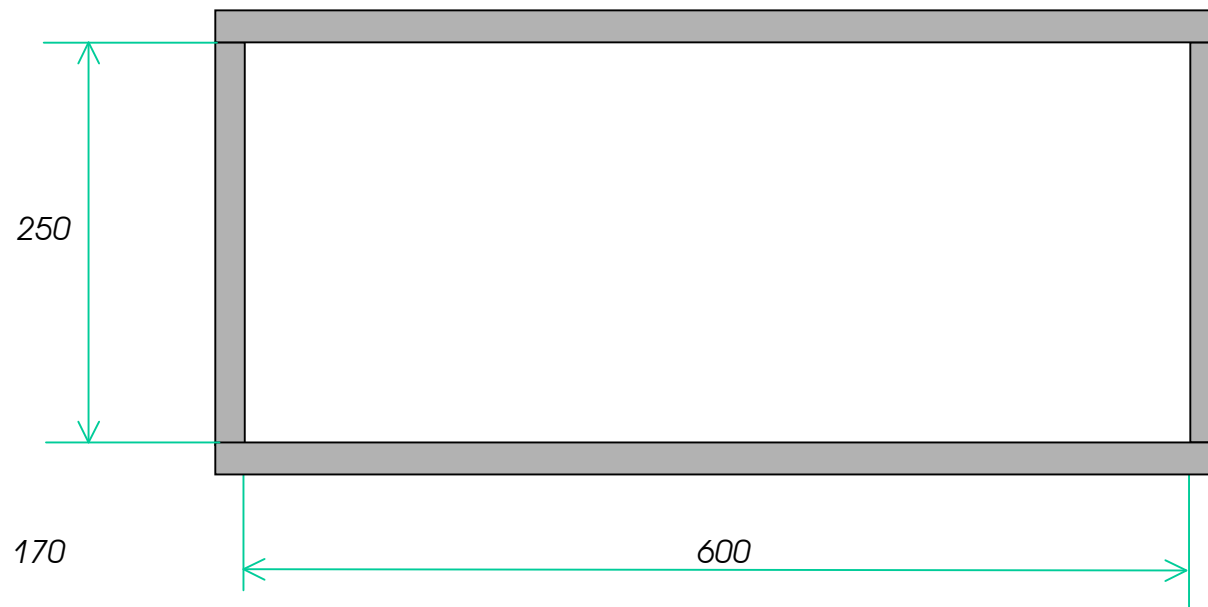
EIXOS Y E Z



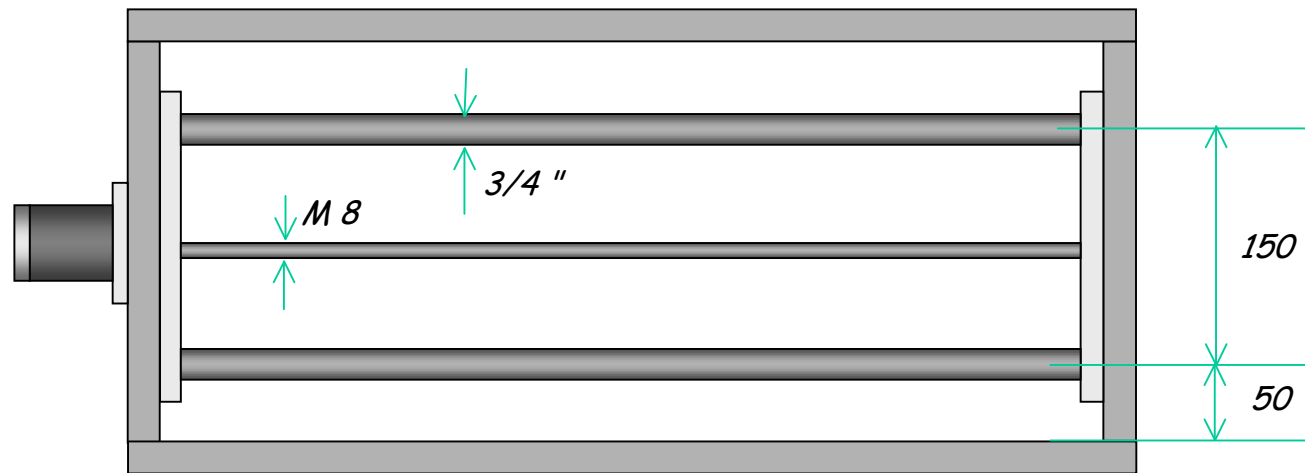
VERSÃO 2- ESTRUTURA - VISÃO GERAL



VERSÃO 2 – QUADRO EIXO Y



VERSÃO 2 - MOTOR E BARRAS - "EIXO Y"



VERSÃO 2 - SUPORTES LATERAIS

