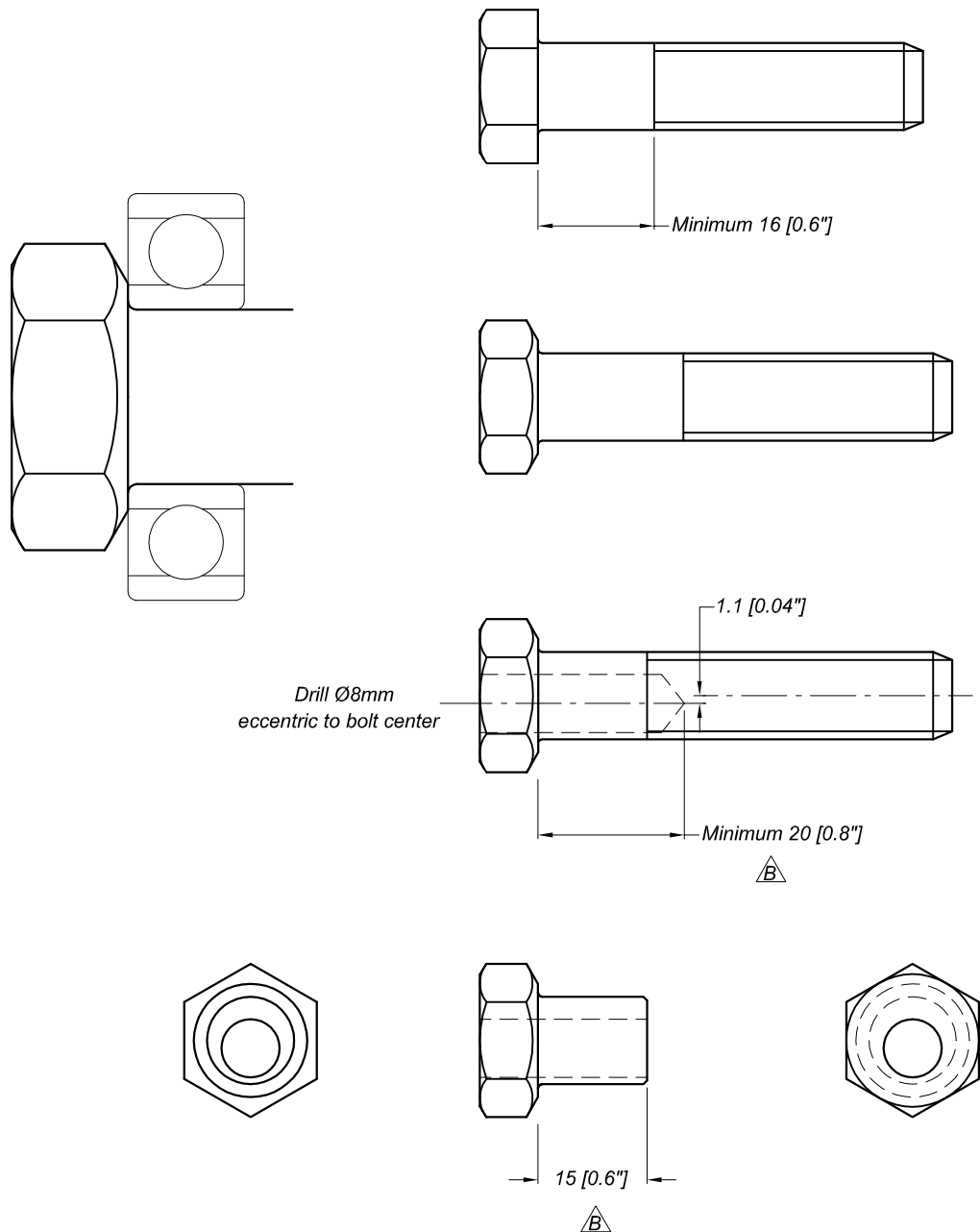

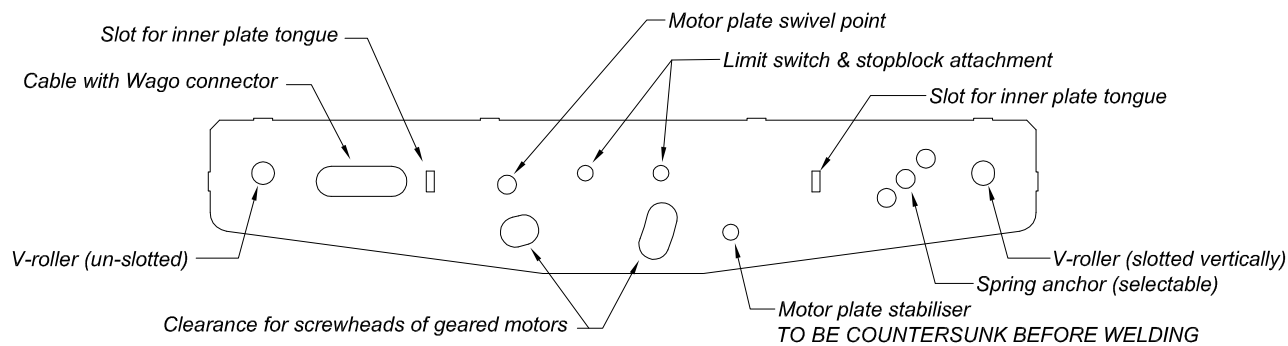
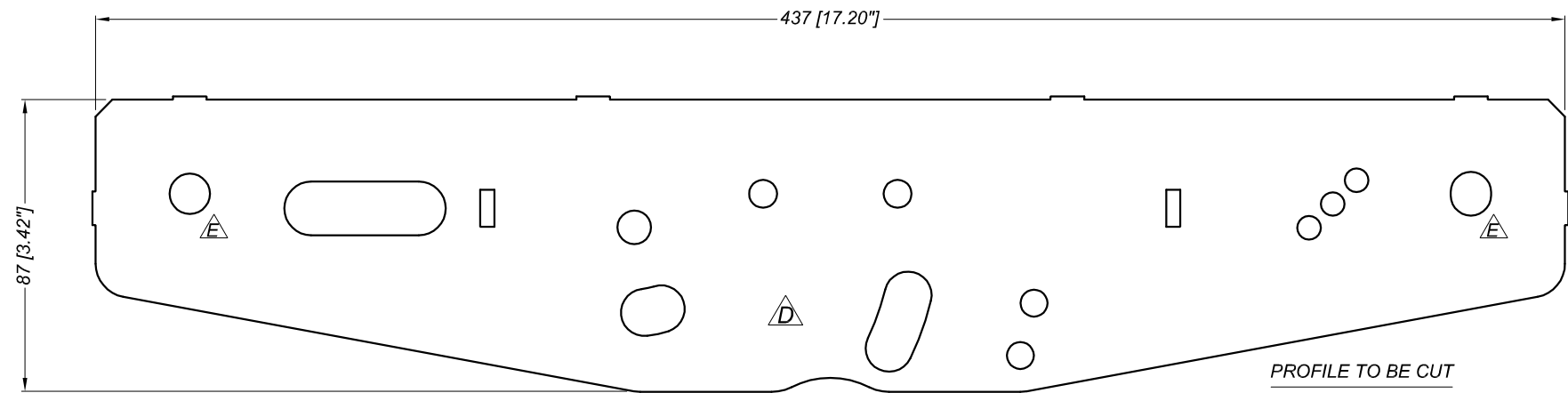


M12 "High Quality" Bolt with minimum 16 [0.06"] plain shank.



Higher drawing/s:	10 40 000 A	1:1	Shorten for "Size 3"		23-02-07	B
			First issue		10-11-06	A
			Description of change		Date	Rev.
Material: 12mm BOLT			Title			
<div>MechMate</div> <div>www.mechmate.com</div>			ECCENTRIC BUSH			
			Drawing Number		Process	Revision
			M1 20 210		T	B

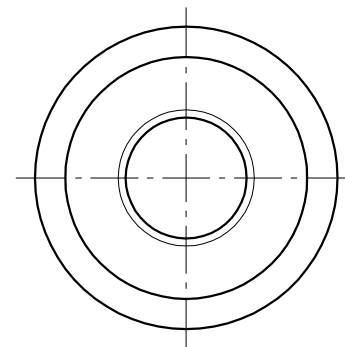
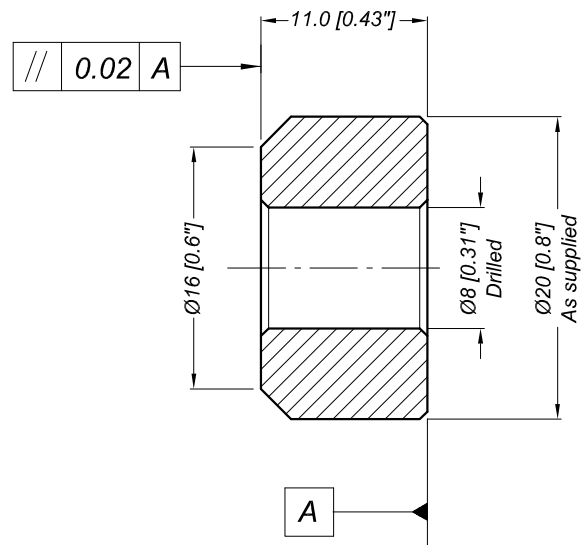
SUPPLY .dxf VERSION OF THIS DRAWING TO THE LASER CUTTING CONTRACTOR FOR REMAINDER OF DIMENSIONS. THE TWO GIVEN DIMENSIONS ARE TO CHECK SCALE.




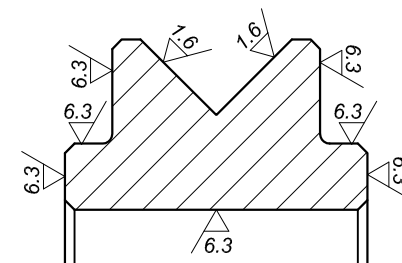
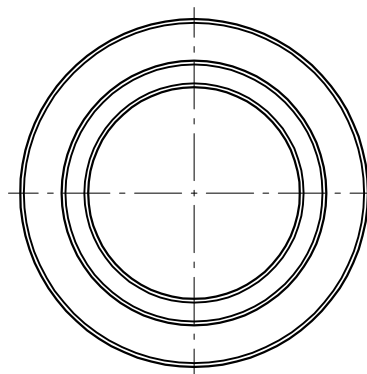
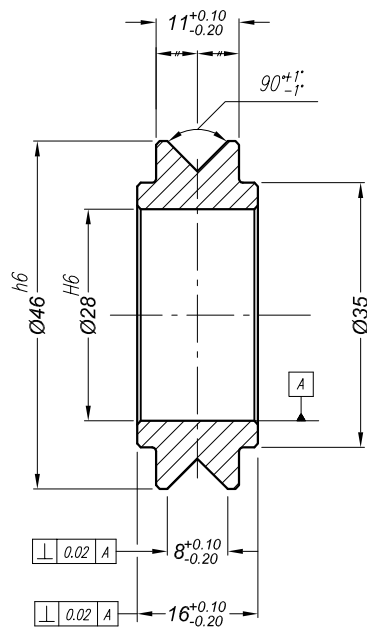
EXPLANATION OF HOLES - DO NOT CUT THIS PROFILE



Higher drawing/s:	10 30 450 D		Standardised on "Size 3" wheels	23-02-07	E	
			Slight changes for larger pinions	05-12-06	D	
			Description of change		Date	Rev.
Material: 5mm STEEL 300MPa			Title			
 www.mechmate.com			CAR CARRIER PLATE - PROFILE CUT			
			Drawing Number		Process	Revision
			10 30 450		P	E




Higher drawing/s: 10 40 000 A	2:1				
		First issue		4-11-06	A
		Description of change		Date	Rev.
Material: 20mm MILD STEEL BAR		Title			
<div>MechMate</div> <div>www.mechmate.com</div>		BEARING SUPPORT BASE - TURNED			
		Drawing Number		Process	Revision
		M1 20 220		T	A

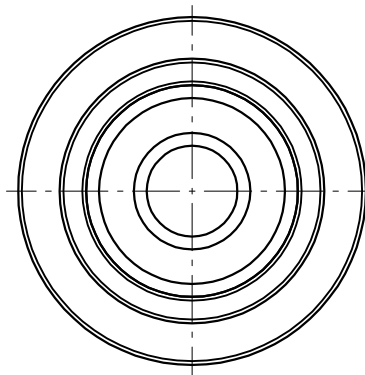
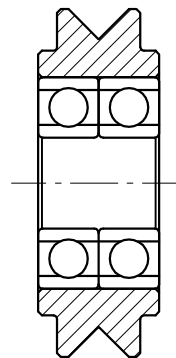


THE V-GROOVE MAY REQUIRE
GRINDING AFTER HARDENING



IF THE V-WHEEL DOES NEED
GRINDING, THEN IT IS BEST TO
INSTALL THE BEARINGS FIRST AND
THEN GRIND THE WHOLE ASSEMBLY
ON A MANDREL.

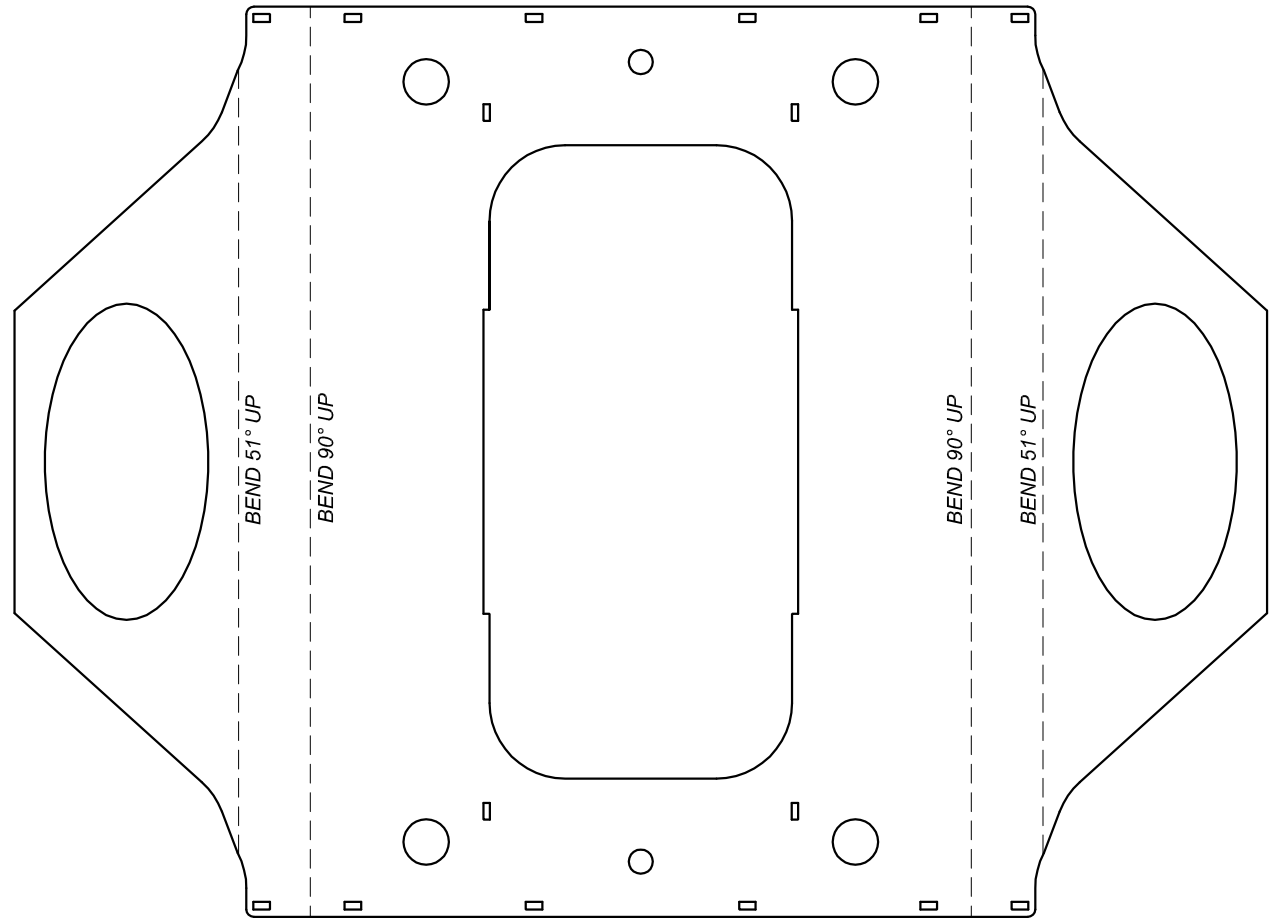
NOTES STILL TO BE ADDED ON THE MATERIAL AND HARDENING

Higher drawing/s:	M1 20 120 A	Interchangeable with "Size 3" rollers	23-02-07	A
		First issue	23-07-06	A
		Description of change	Date	Rev.
Material:	HARDENABLE STEEL	Title	V-TYRE	
 www.mechmate.com		Drawing Number	M1 20 121	Process
				Revision
			T	B

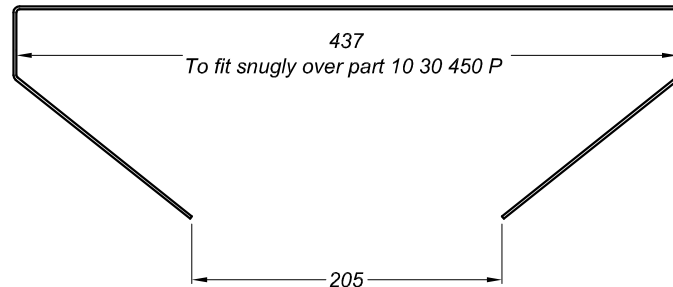



2x 6001.2RSR Bearings
installed with "LocTite"

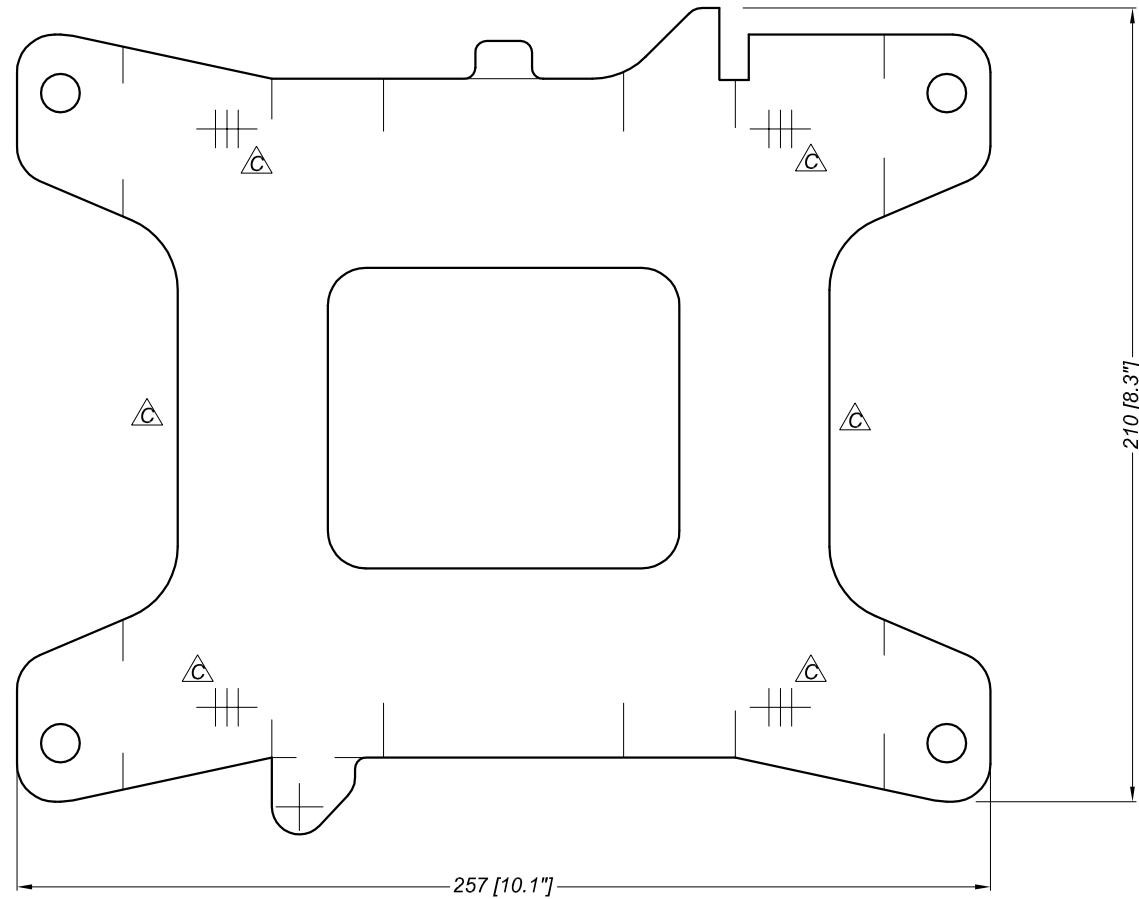
Higher drawing/s:	M1 20 100 A		Compatible to "Size 3"		23-02-07	B
			First issue		23-07-06	A
			Description of change		Date	Rev.
Material:			Title			
 www.mechmate.com			V-WHEEL			
			Drawing Number		Process	Revision
			M1 20 120		A	B




10 30 422 P



Higher drawing/s:	10 20 420 W		Correct scale error, added mating note		23-02-07	B
			First issue		14-07-06	A
			Description of change		Date	Rev.
Material: 2mm STEEL PLATE			Title			
<div>MechMate</div> <div>www.mechmate.com</div>			CAR MAIN PLATE - BENT			
			Drawing Number		Process	Revision
			10 30 422		B	B



PROTOTYPE

Higher drawing/s:	10 40 432 B	1:2	V-Roller positions - range of positions		23-02-07	C
			Added stop tab, widened slot, + outline		19-11-06	B
		Description of change			Date	Rev.
Material: 4mm STEEL 300MPa			Title			
<div>MechMate</div> <div>www.mechmate.com</div>			SPIDER PLATE - PROFILE CUT			
			Drawing Number		Process	Revision
			10 40 432		P	C