

Art
Training
Tutorial

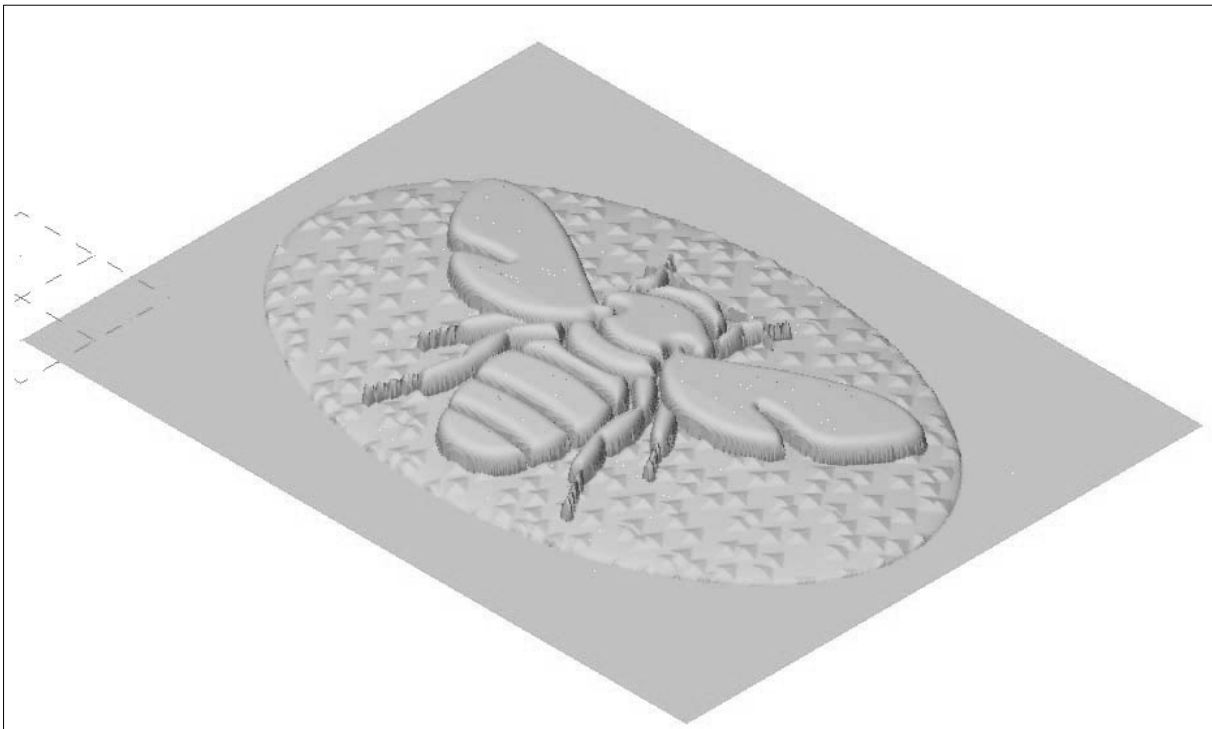
Mastercam®

X⁴

TUTORIAL SERIES FOR

Mastercam X⁴

TUTORIAL 1



**Mastercam Art – Organic & Texture Surfaces; Cut the Part Using Art
Base Surface Toolpaths**

OBJECTIVES:

- Creating a New Art Base Surface Rectangular
- Creating Organic Surfaces
- Using Art Manager
- Create Texture Surface
- Set the Active Art Base Surface Top to the Z plane
- Machine the Active Art Base Surface

Art

GEOMETRY CREATION

STEP 1: CREATE A NEW RELIEF

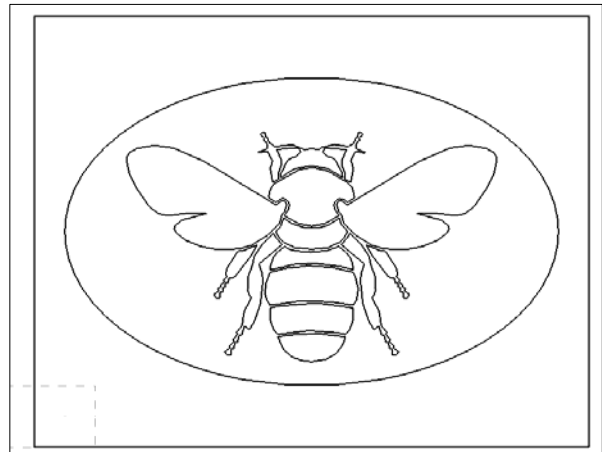
A Relief based surface is a flat 2D surface from which you will “grow” or “carve” your art.

File



Open

- Select BEE_GEO.mcx.
- Please check pages A-1 and A-2 from the Getting Started chapter for the file location.
- Select the **Open** button.
- To keep the original file save the file with a different name as shown below.



File



Save As

- Enter the File Name: **BEE_SURFACE.mcx**
- Select the **OK** button.
- Please check pages A-4 and A-5 from the Getting Started chapter to enable the Art toolbar and the Grid.

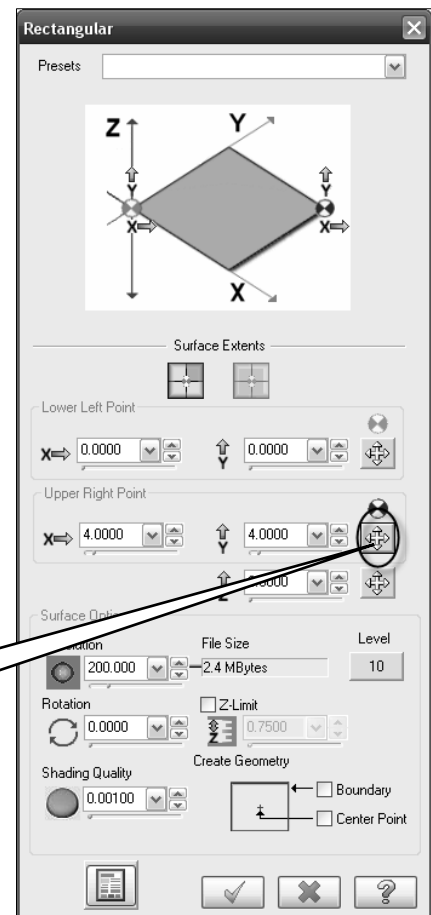
Art

➤ New Art Base Surface

➤ Rectangular

- Make sure that the Lower Left Point is set as shown to the right (X=0; Y=0).
- Click on the Use Mastercam to pick Upper Right Point button in the Upper Right Point.

Select Use Mastercam to pick Upper-Right Point



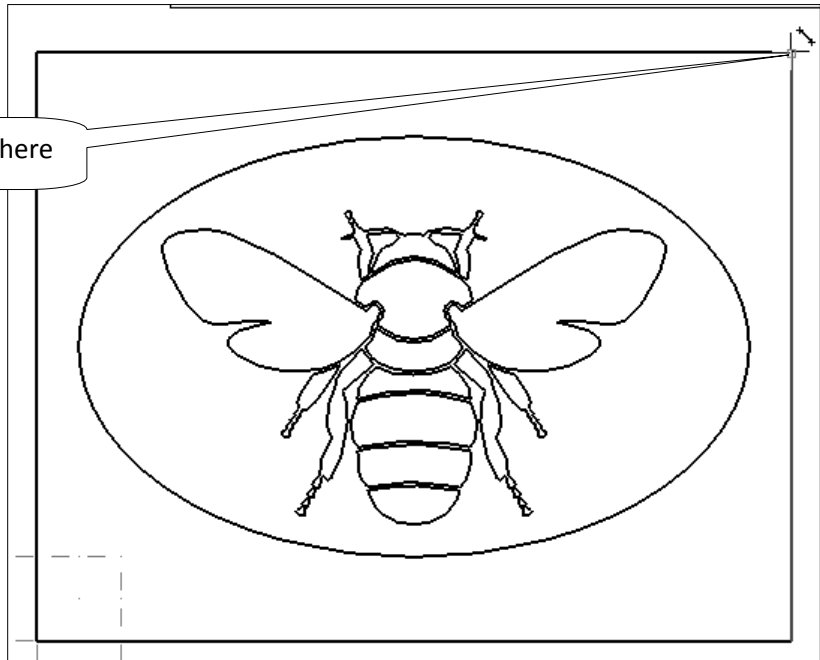
Art

- Select the Top-Right corner of the rectangle as shown below.

Select the Endpoint here

- Make sure that the Endpoint cursor appears when selecting the corner.

- The Art Base Surface parameters should look as shown to the right.



- Resolution defines the number of grid points displayed per inch or millimetre. It controls the crispness of the relief model.

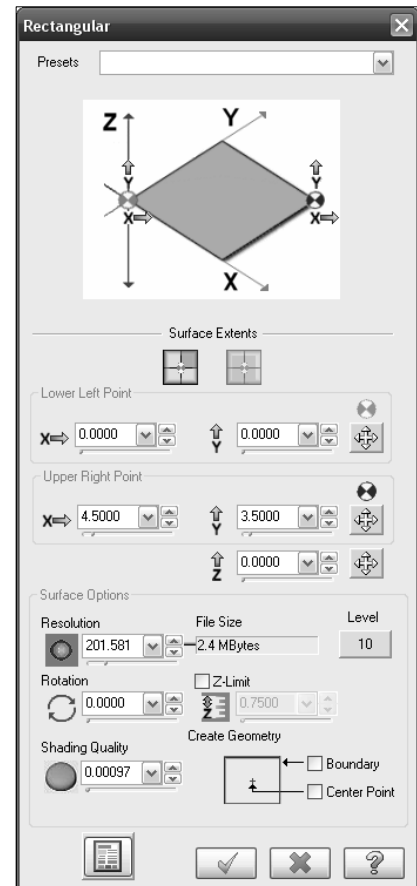
- Select the **OK** button to exit the screen.



- Select **Isometric View**.



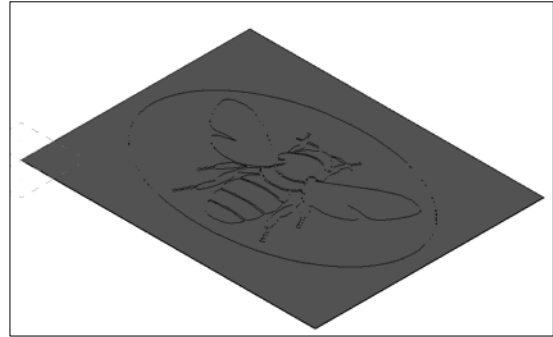
- Select the **Fit** icon.



Art

- Press **Alt+S** to shade/unshade the part.

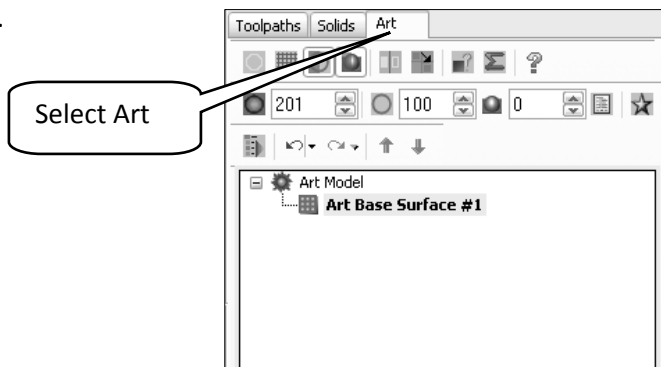
The art base surface should look as shown in the drawing to the right.



STEP 2: CREATE THE ORGANIC SURFACES

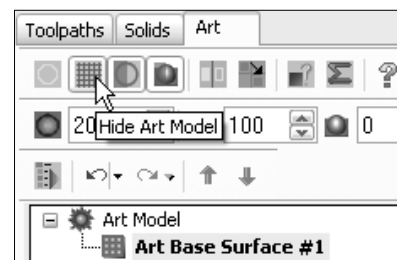
Organic Surface is a relief surface which is defined as a point grid. It will grow and scale in an organic way automatically. The surface requires closed chains on which you apply cross sections

- Enable **Art Manager** by selecting the **Art** tab.



- Select the **Hide Art** button to hide the base surface. You will be able to select the geometry easier.

- Select **Top View**. 



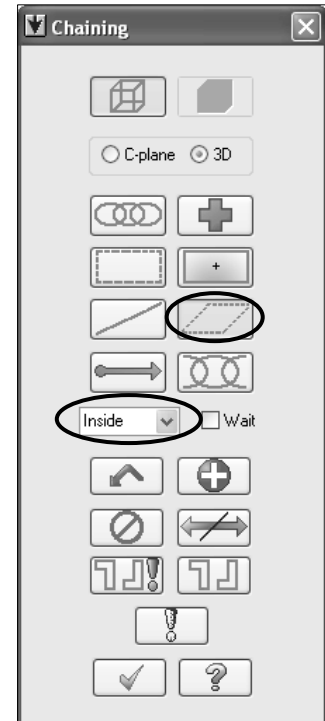
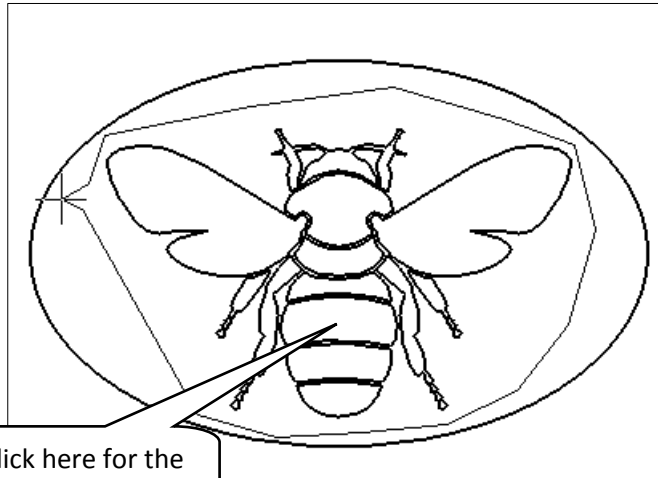
Art

Art

➤ Create Art Surface Operation

➤ Organic

- Enable **Polygon** button and **Inside** in the **Chaining** dialog box.
- Create a polygon around the bee geometry as shown in the picture below.



- Select **End chain** from the **Chaining** dialog box to close the polygon.



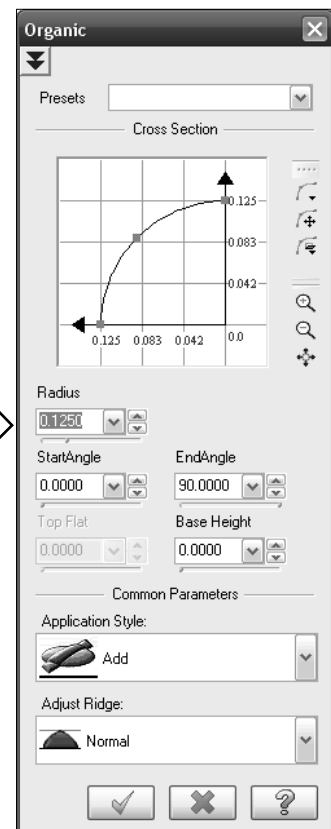
- [Sketch approximate start point]: Select a point inside of the polygon as shown in the picture above.

➤ Note that the bee geometry is highlighted in the selection color.

- Select the **OK** button to exit **Chaining** dialog box.



- Make sure that the settings are matching the screenshot to the right.



Cross Section allows you to:

1. Select a predefined, parametrizable cross-section.
2. Pick an existing Mastercam geometry as the cross-section.
3. Load or Save cross-sections.
4. Set radius/Height once you select the predefined once.

➤ We are using the default cross section: **Convex Arc** with a **Radius** = 0.125.

- Select the **OK** button twice.



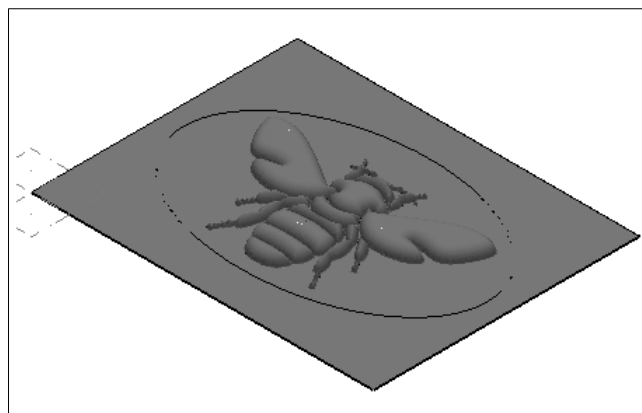
- Disable **Hide Art Model**.



- Select **Isometric View**.



The surface should look as shown.



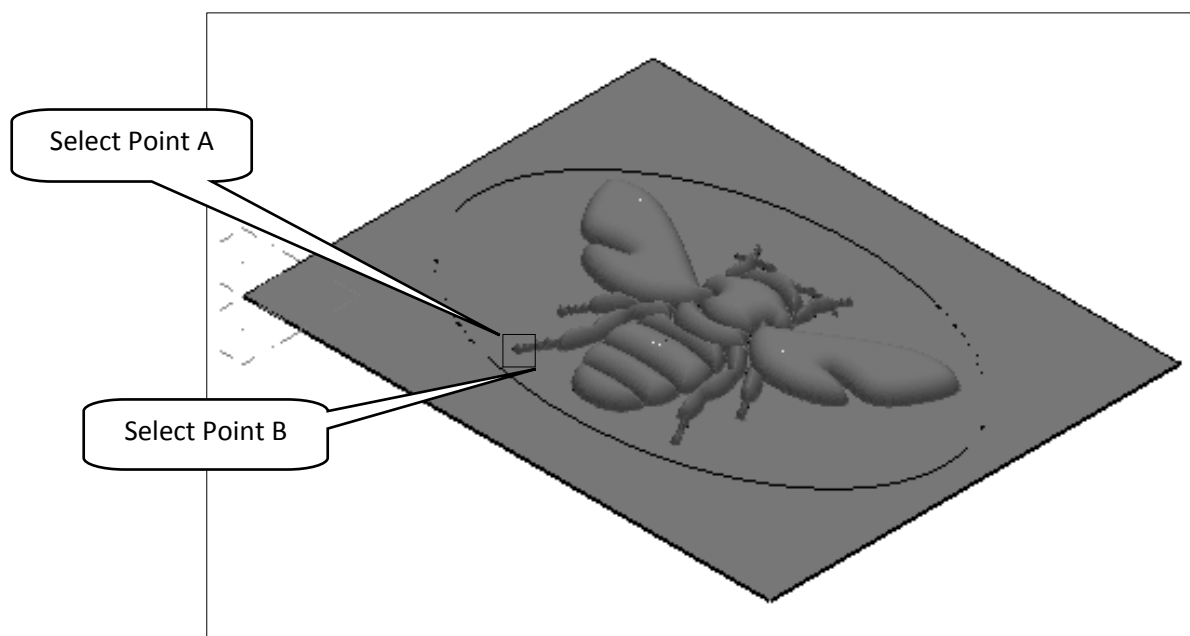
➤ We will Zoom in to check the bee legs as shown below.

➤ Select **Zoom-Window** icon.



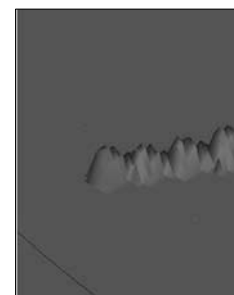
➤ [Specify zoom window]: Select Point A.

➤ [Specify zoom window]: Select Point B.



The surface looks as shown.

➤ To soften the ridge we will modify the surface using the **Art Manager**.



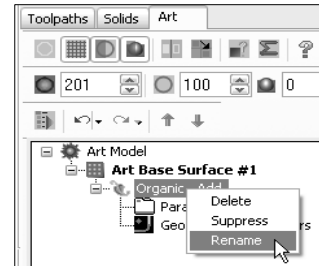
Art

STEP 3: SOFTEN THE RIDGE

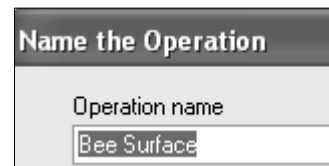
3.1 Rename the Organic Surface.

We will change the name of the surfaces that we created in order to keep track of them and to be able to identify them quickly to edit.

- Right-mouse click on the **Organic Surface** in the **Art Manager** and select **Rename**.

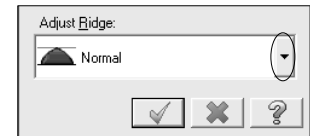
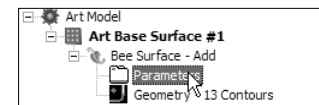


- Enter **Bee Surface**.

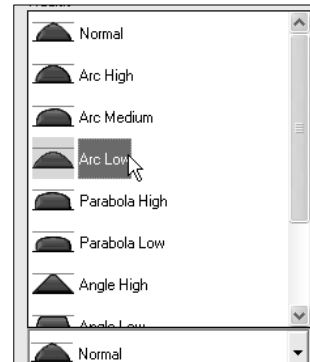


3.2 Adjust the Shape.

- Double click on **Parameters**.
- In the **Adjust ridge** field select the drop-down arrow to select the shape.



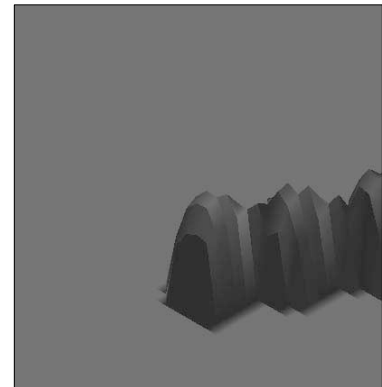
- Select the **Arc Low** shape.



- Select the **OK** button to exit **Organic Surface Parameters** screen.



The surface will look as shown.



- Select the **Fit** button.



Art

➤ Select **Top View**.



➤ Enable **Hide Art Model**.



STEP 4: CREATE THE ELLIPSE SURFACE

4.1 Create the Ellipse Surface.

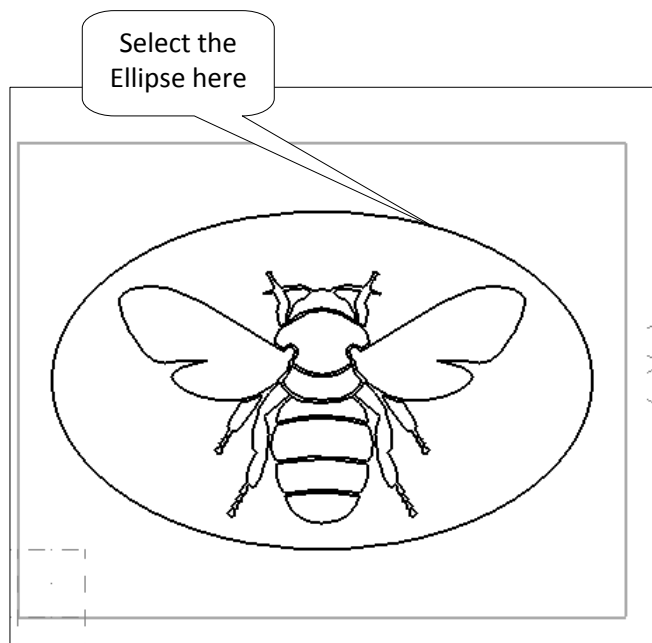
Art

➤ Create Art Surface Operation

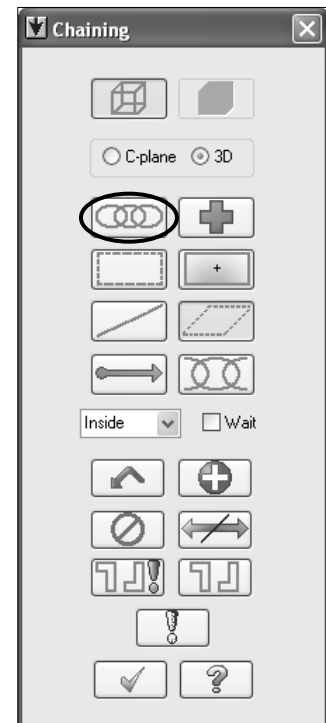
➤ **Organic**


➤ Enable **Chain** in the **Chaining** dialog box.

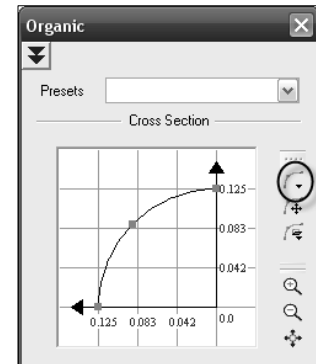
➤ [Select one or more chains for Contour 1]: Select the Ellipse as shown below.



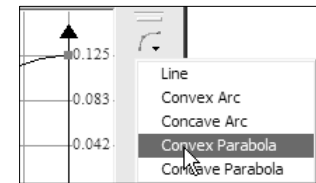
➤ Select the **OK** button to exit **Chaining**.



- Select the **Predefined, parametrizable cross-section** button as shown to the right. 



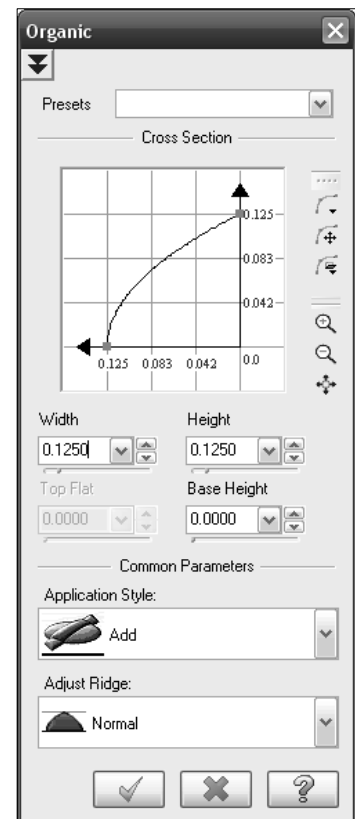
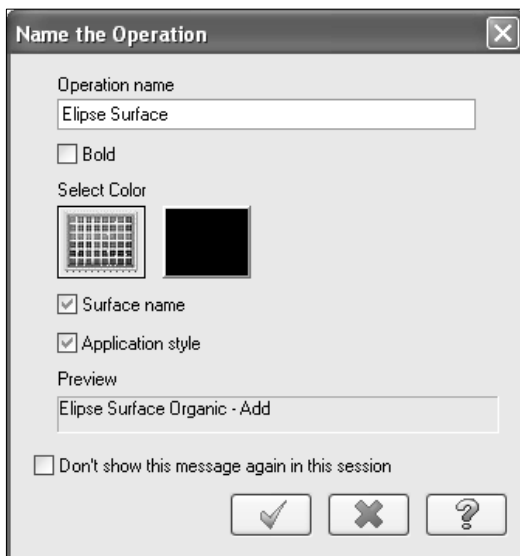
- Select the **Convex Parabola** as shown.



- Make sure that the rest of parameters in the **Organic Surface Parameters** screen are set as shown to the right.
- Select the **OK** button to exit **Organic Surface Parameters** screen.



- The “Name the Operation” Window will appear. Enter the Operation name as **Ellipse Surface**, as shown below.



- Select the **Ok** button to exit the **Name the Operation** window.



Art

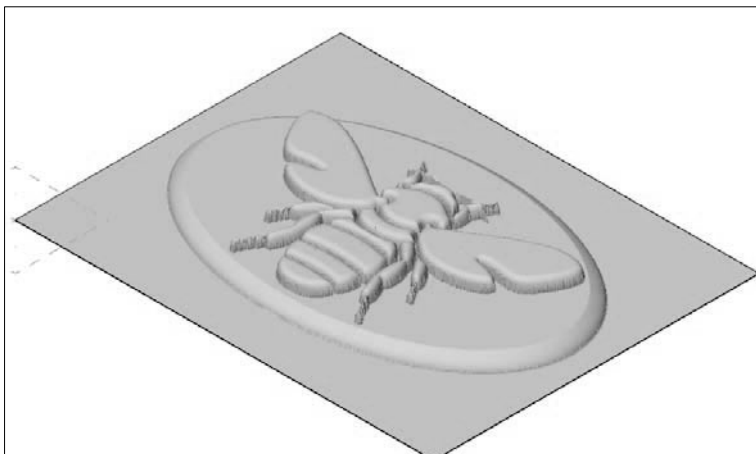
➔ Disable **Hide Art Model**.



➔ Select the **Isometric View**.



The part should look as shown.

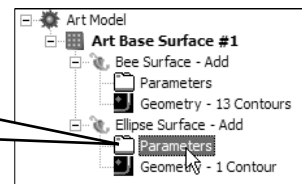


➔ Note that the elliptical surface looks like a shield.

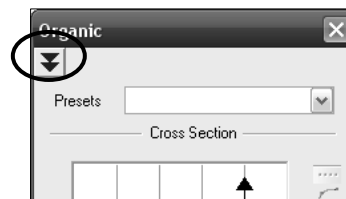
4.2 Stretch the Ellipse Surface to look like a dome.

➔ Double-click on the **Ellipse Surface Parameters** as shown.



Double-click on the Parameters

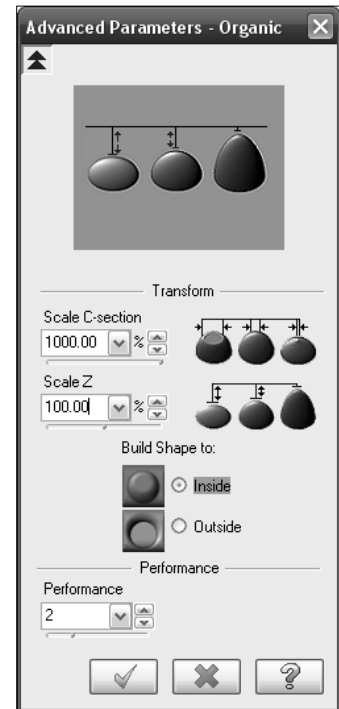


➔ Select the **Double arrow** to open the **Advanced Parameters**.

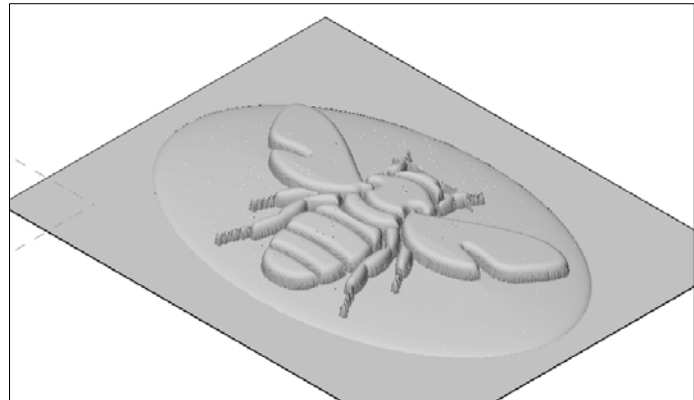





Art

- Change the **Scale C-section** to 1000.0 %.
- Select the **OK** button to exit the **Advanced Parameters – Organic** screen. 
- Select the **OK** button to exit the **Organic Surface Parameters** screen. 



The geometry should look as shown to the right.



- Select **Top View**. 
- Enable **Hide Art Model**. 
- Select the **Fit** button if necessary. 

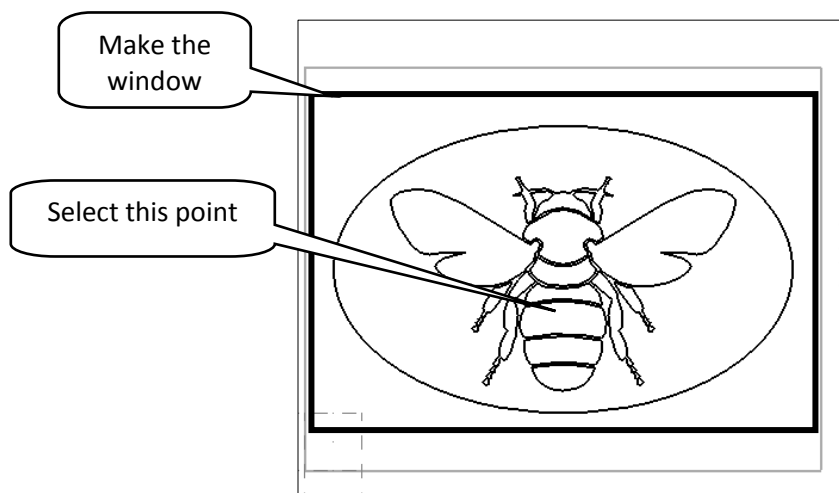
STEP 5: CREATE A TEXTURE SURFACE


Art

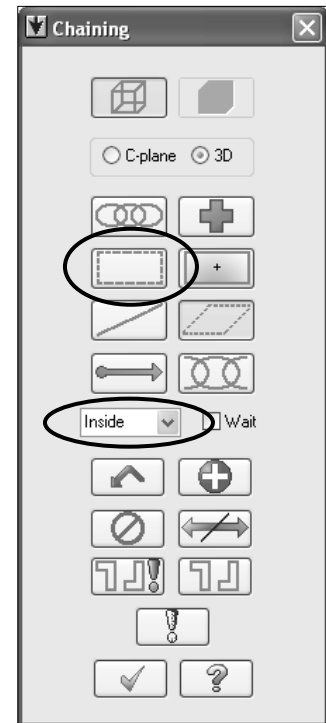
➤ Create Textures.

➤ Custom Textures.

- Enable **Window** button in the **Chaining** dialog box.
- Make sure that **Inside** is also enabled.
- Make the window is as shown in the picture below.
- [Sketch approximate start point]: Select a point in the middle as shown.

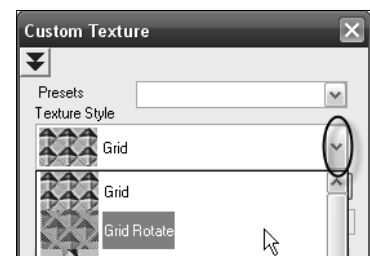


- Select the **OK** button dialog box. 




to exit **Chaining**

- Select the arrow next to the **Texture Style** field and select **Grid Rotate**.



Art

- Make sure that the **Base Pattern File** is **Diamond.asl**; otherwise, click on the **Browse** button to select it.

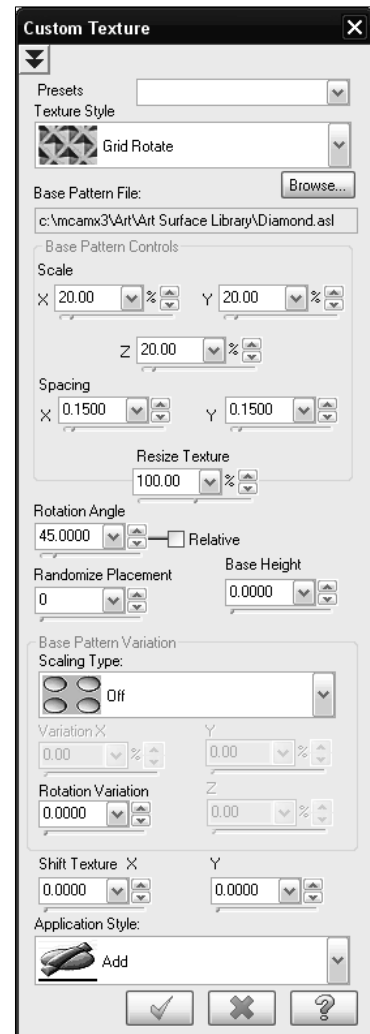
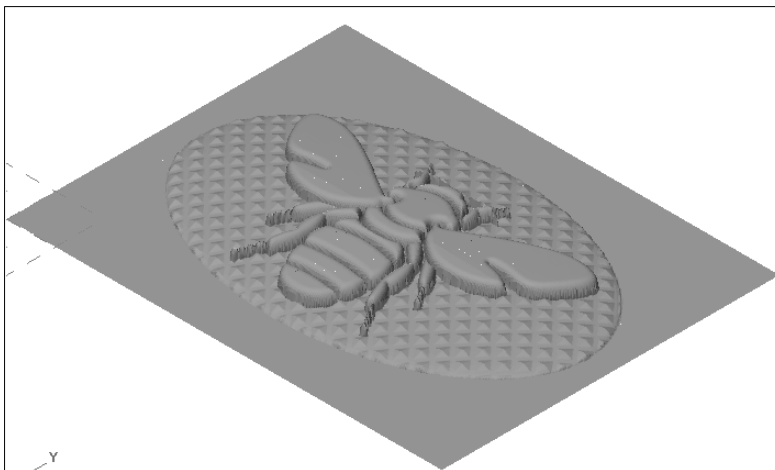
- Leave the default settings as shown and select the **OK** button to exit. 

- Click **Ok** to exit the **Name the Operation** Window. 

- Disable **Hide Art Model**. 

- Select **Isometric View**. 

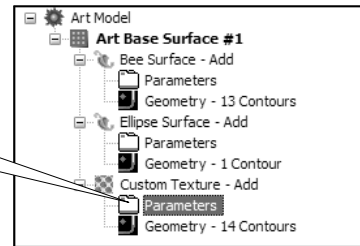
The part should look as shown.



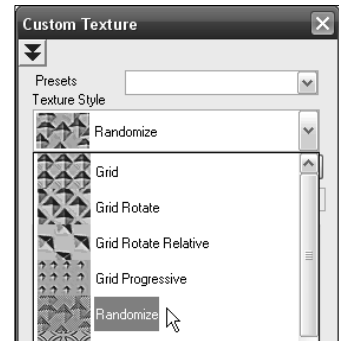
Art

- To modify the pattern select double-click on the **Custom Texture** surface **Parameters**.

Double-click on Parameters



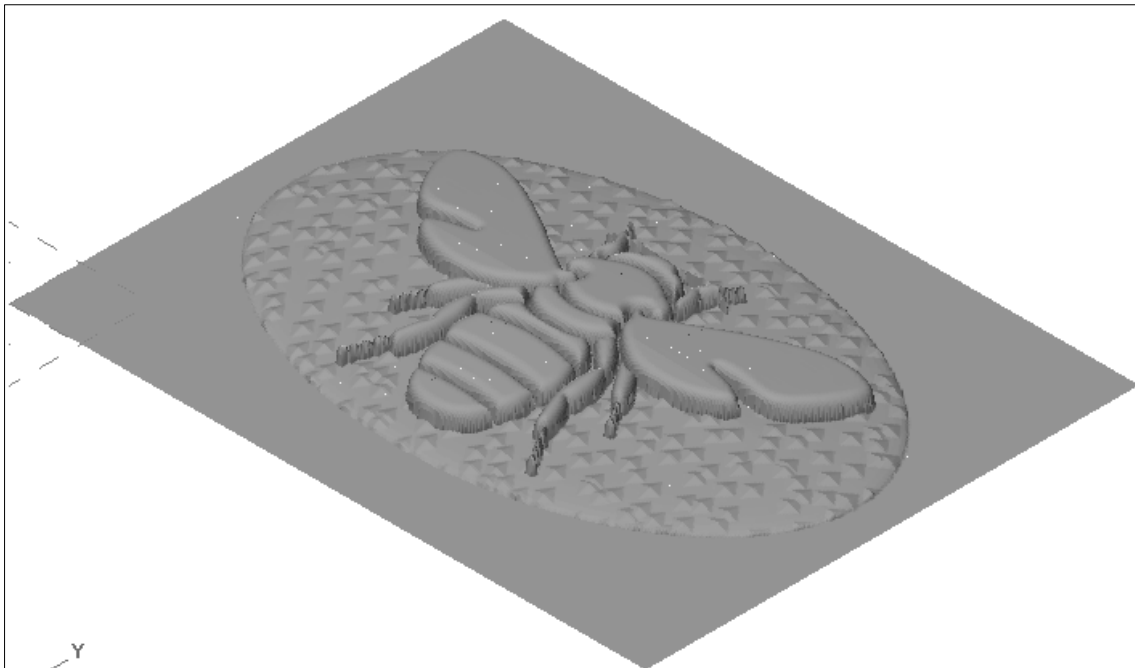
- Change the **Texture Style** to **Randomize**.



- Select the **OK** button to exit **Custom Texture Parameters**.





The geometry looks as shown below.



Art

STEP 6: MOVE THE MODEL TO HAVE Z0 AT THE TOP OF THE GEOMETRY


- Change the **Graphic View** to **Front**. 
- Select the **Fit** button. 

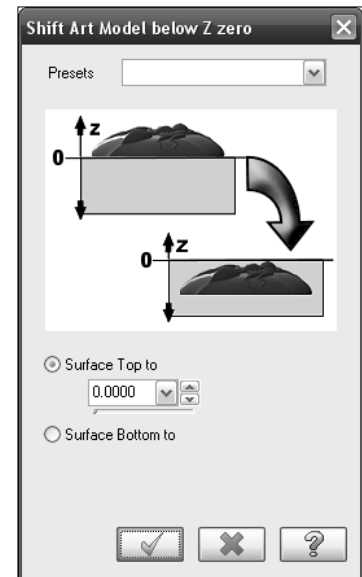
The geometry looks like the diagram shown below.



- Note that the geometry is above Z0. We want to have Z0 at the top of the geometry.

Art



- **Xform Art Base Surface**
-  **Shift Art Model Below Z Zero**
- Make sure that **Surface Top to** is enabled.



- Select the **OK** button twice to exit. 

The part will look as shown.



- Change the **Graphic View** to **Isometric**. 
- Select the **Screen-Fit** button. 

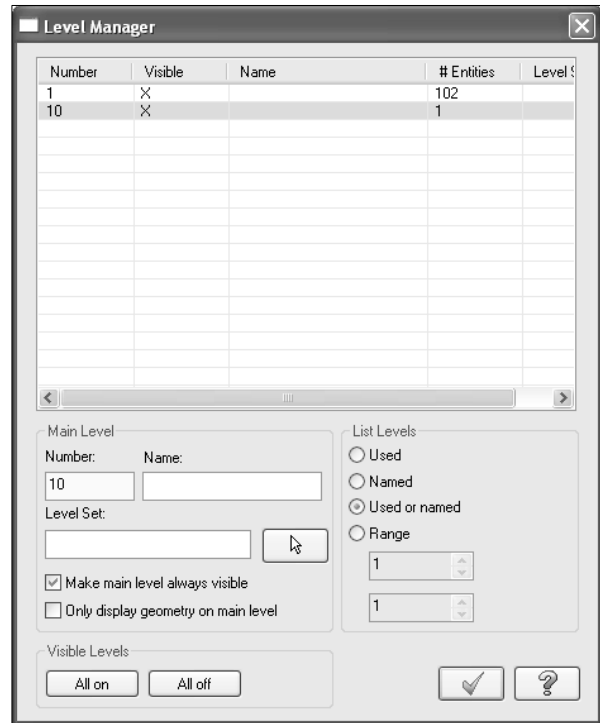
STEP 7: HIDE THE 2D GEOMETRY USING LEVEL MANAGER

- Select **Level** from the **Status Bar** as shown.

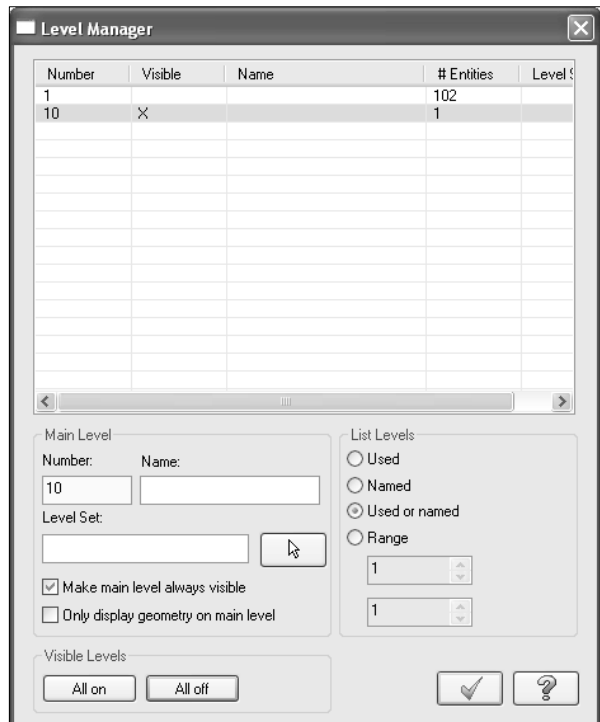


- Enter number 10 in the **Main Level**.

- Select **All off** button.



- The **Level Manager** should look as shown to the right.

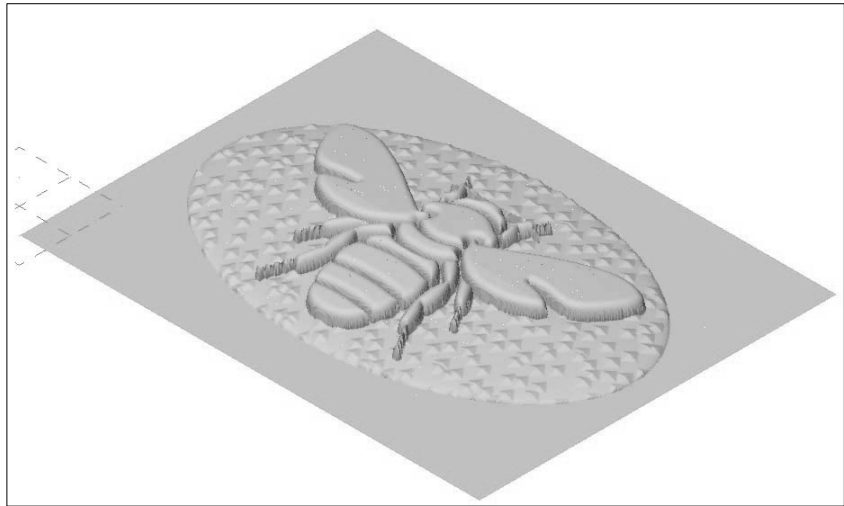


- Select the **OK** button to exit **Level Manager**.



Art

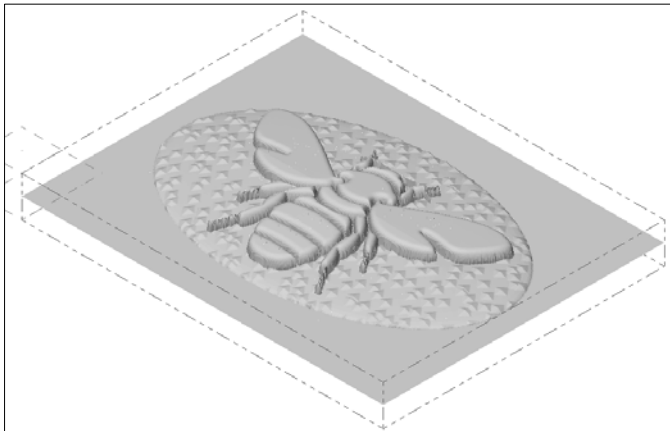
- Select the **Repaint** button. 



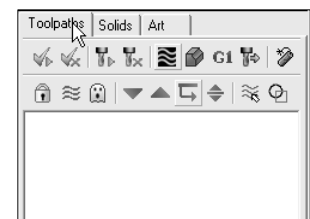
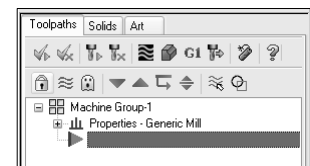
TOOLPATH CREATION

STEP 8: SET UP THE STOCK

Step Preview:

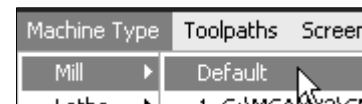


- Select the **Toolpaths Manager** tab.
- If a machine is already selected in the **Toolpaths Manager**, skip the next selection.
- Otherwise select;



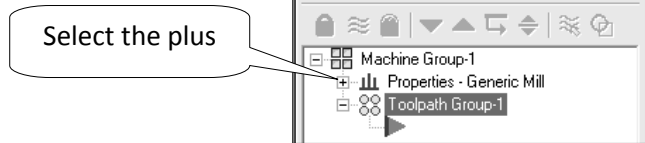
Machine type

- **Mill**
- **Default**

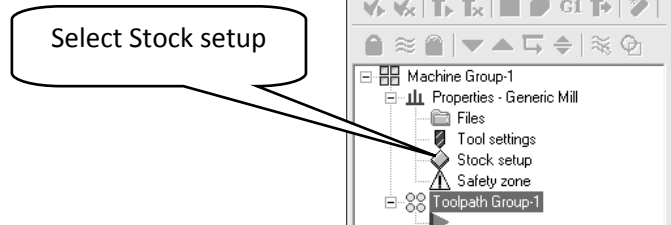


Art

- Select the plus in front of **Properties** to expend the **Toolpaths Group Properties**.



- Select **Stock setup**.



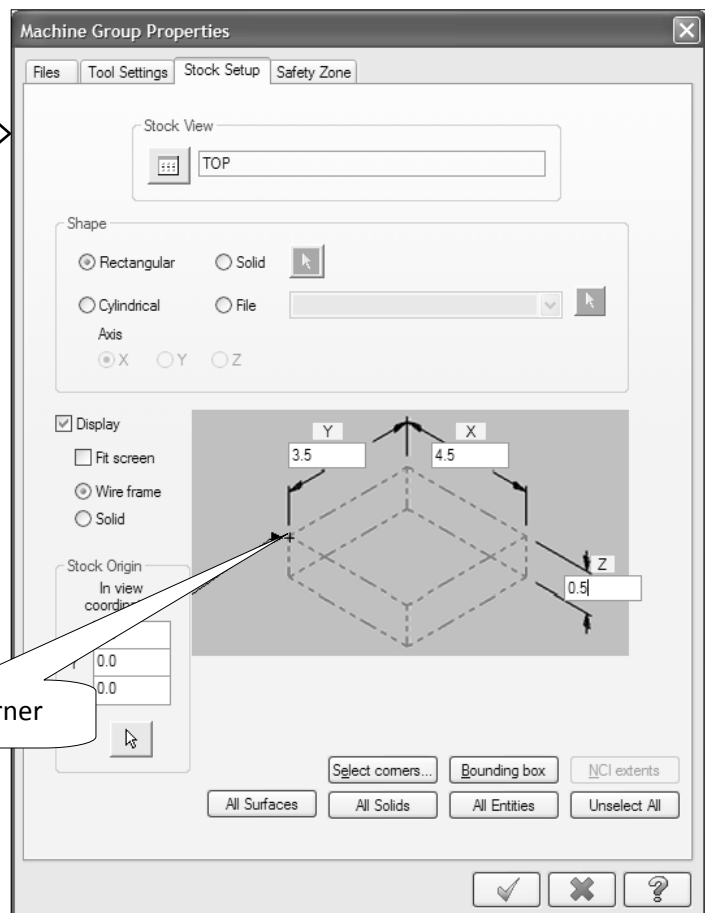
- Change the parameters to match the screenshot to the right.

The **Stock Origin** values adjust the positioning of the stock, ensuring that you have equal amount of extra stock around the finish part.

Display options allows you to set the stock as **Wireframe** and to fit the stock to the screen. (**Fit Screen**)

- Select the left corner to move the arrow as shown.

Select this corner



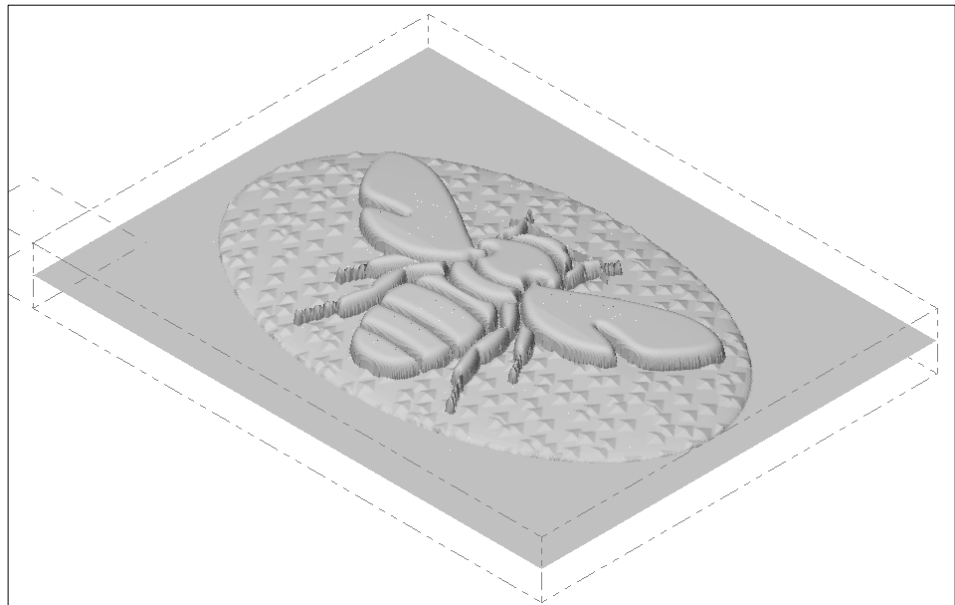
Art

- Select the **Tool Settings** tab to set the tool parameters and the part material.
- Change the parameters to match the screenshot to the right.

Assign tool numbers sequentially allows you to overwrite the tool number from the library with the next available tool number. (First operation → tool number 1; Second operation → tool number 2, etc.)
Feed Calculation set to **User defined** uses feed rate, plunge rate, retract rate and spindle speed that you enter.

The screenshot shows the 'Machine Group Properties' dialog box with the 'Tool Settings' tab selected. The 'Program #' field is set to 1. Under 'Feed Calculation', 'User defined' is selected with values: Spindle speed 4500.0, Feed rate 50.0, Retract rate 50.0, and Plunge rate 25.0. Under 'Toolpath Configuration', 'Assign tool numbers sequentially' and 'Warn of duplicate tool numbers' are checked. Under 'Advanced options', 'Override defaults with modal values' is unchecked. Under 'Sequence #', Start is 100.0 and Increment is 2.0. The 'Material' field is set to 'ALUMINUM inch - 2024'. At the bottom right, there are three buttons: a checkmark (OK), a cross (Cancel), and a question mark (Help).

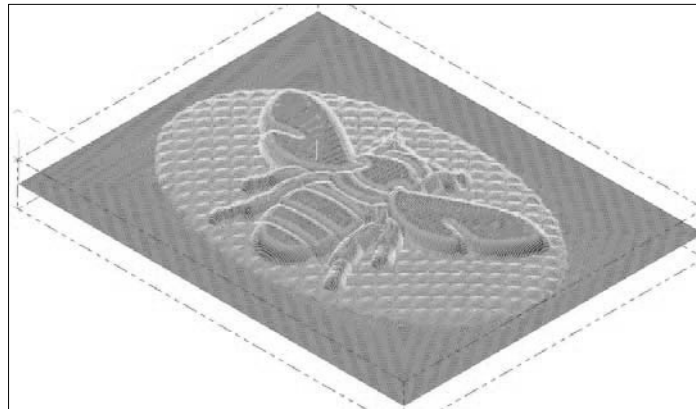
- Select the **OK** button to exit **Toolpath Group Properties**. 



Art


STEP 9: MACHINE THE PART

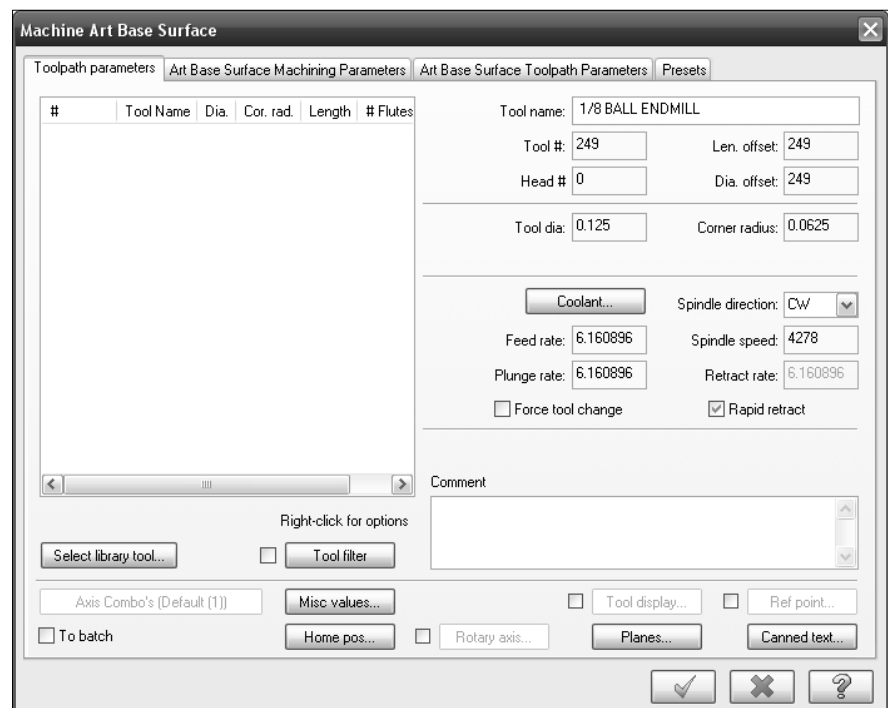
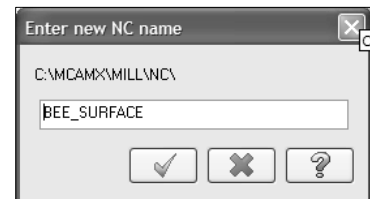
Toolpath Preview:



Art

 **Toolpath Art Base Surface**

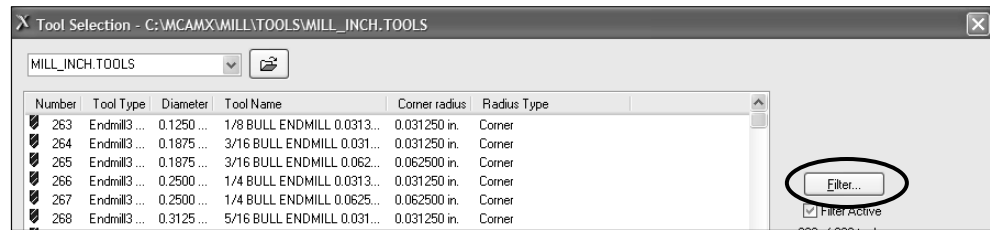
- Select the **OK** button to accept the same name for the **NC** as the geometry. 



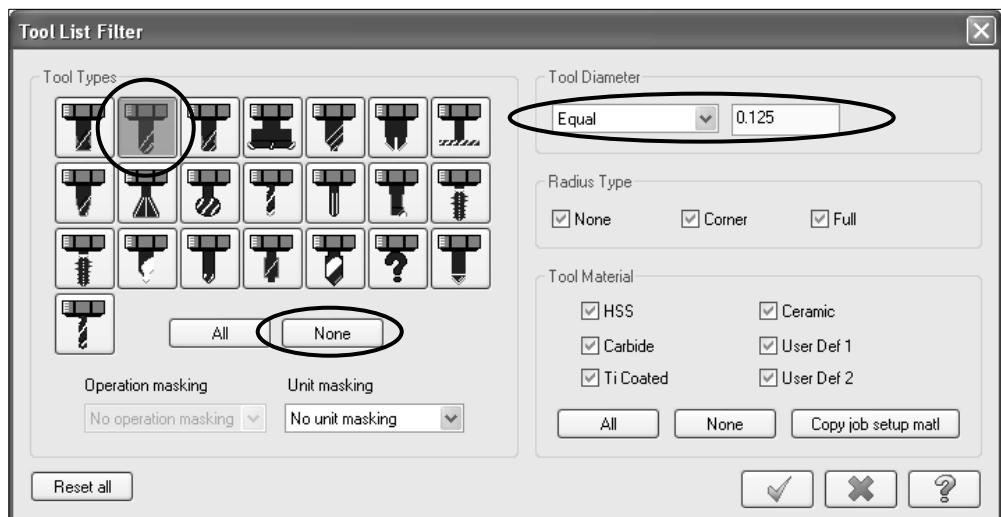
- Select the **Select library tool** button.



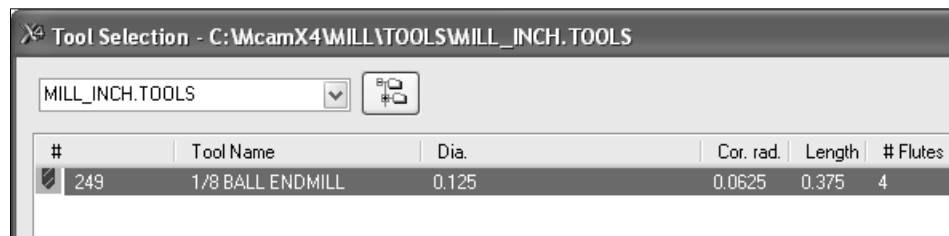
- Select the **Filter** button in the **Tool Selection** window.



- To select the 1/8 Ball Endmill follow the next steps.
- Select the **None** button in the **Tool Types**.
- Select the **Endmill Sphere** as the Tool Type.
- Select the drop-down arrow and pick **Equal** in the **Tool Diameter** section.
- Enter 1/8 as the diameter.



- Select the **OK** button to exit **Tool List Filter**.

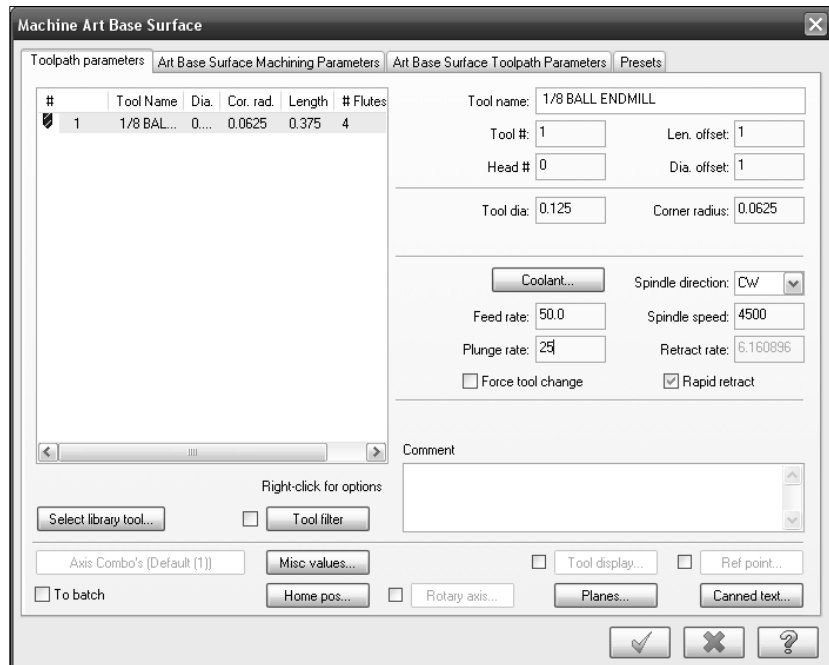


- Select the 1/8 Ball Endmill from the list.
- Select the **OK** button to exit the **Tool Selection** screen.

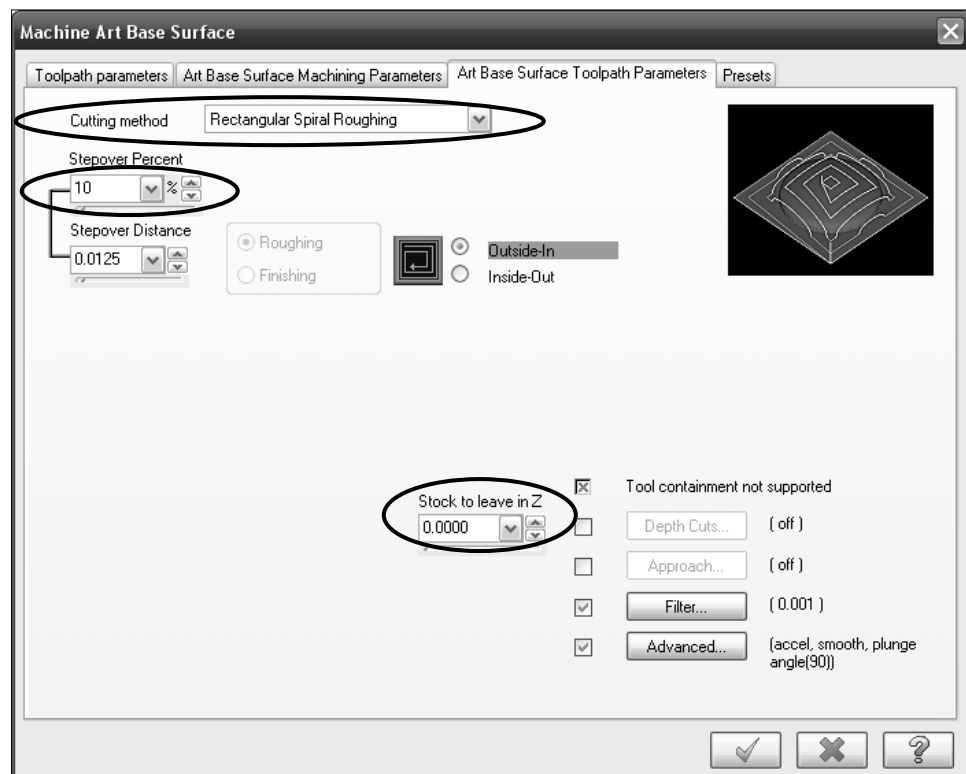


Art

- Make sure that the parameters in the **Tool Parameters** page match the following screenshot.



- Select the **Art Base Surface Toolpath Parameters** tab and change the **Cutting method** and the **Stepover Percent** as shown.
- Change the stock to leave in Z to **0**.



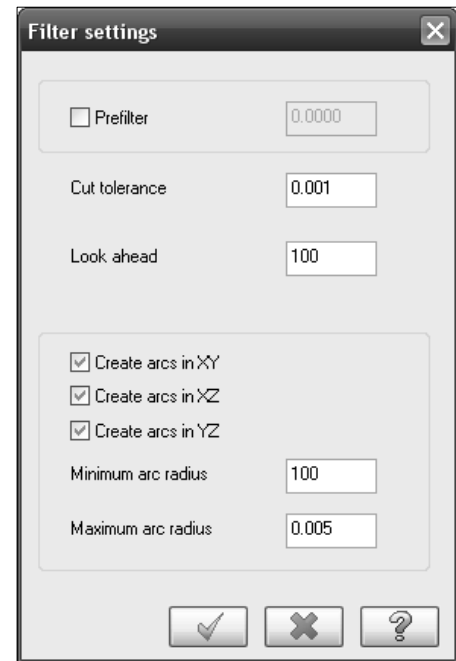
Art

- Select the **Filter** button from the Art Base surface toolpath parameters section.

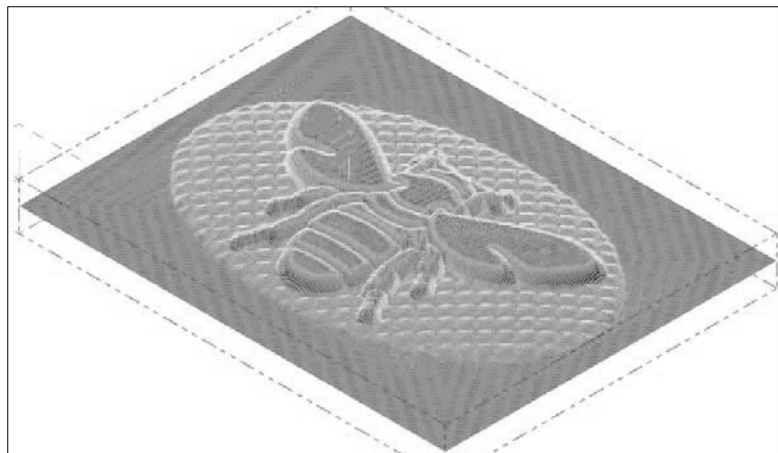
- Select the **OK** button to exit **Filter Settings** parameters.



- Select the **OK** button to exit **Machine Art Base Surface** parameters.

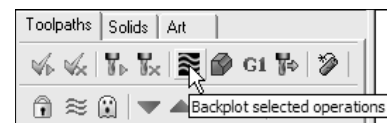


- Note it may take a few minutes to generate the toolpath.

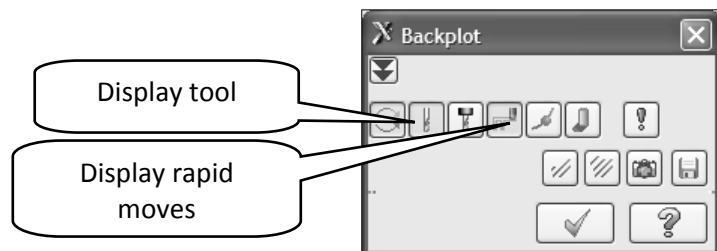


STEP 10: BACKPLOT THE PART

- Select the **Backplot selected operations** button.

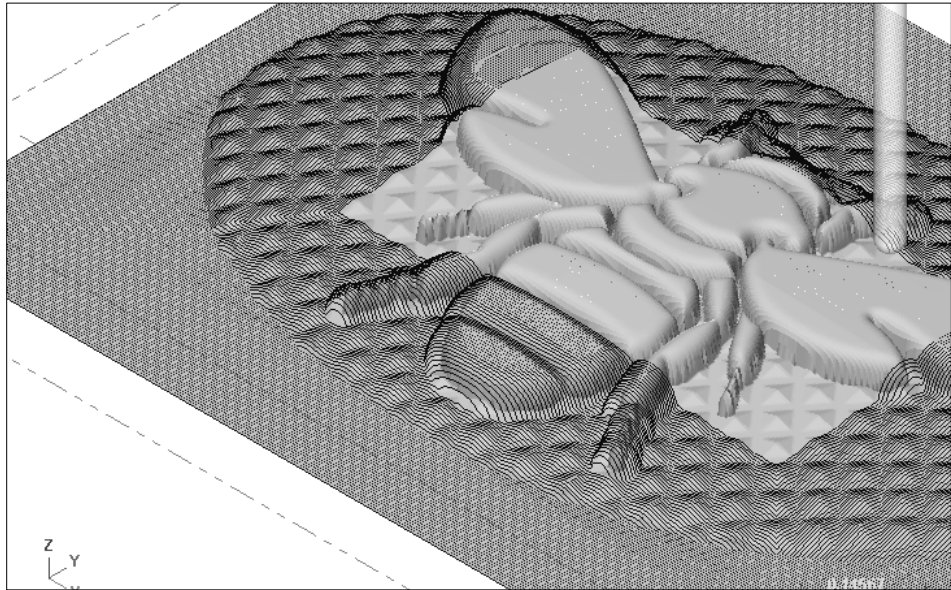


- Make sure that you have the following buttons turned on (they will appear pushed down).



- Select the **Play** button.





- Select the **OK** button to exit **Backplot**.



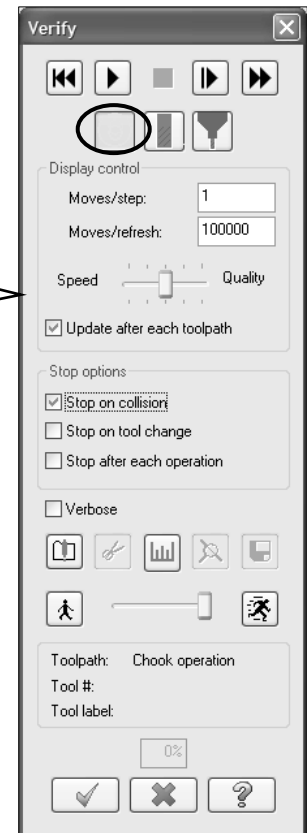
STEP 11: VERIFY THE PART

- Select the **Verify selected operations** button.



- Enable the **Turbo** button as shown.

Update after each toolpath updates the stock after each operation.
Stop on collision pauses the verification when the tool touches the part with a rapid move.



- Set the **Verify speed** by moving the slider bar in the speed control bar.



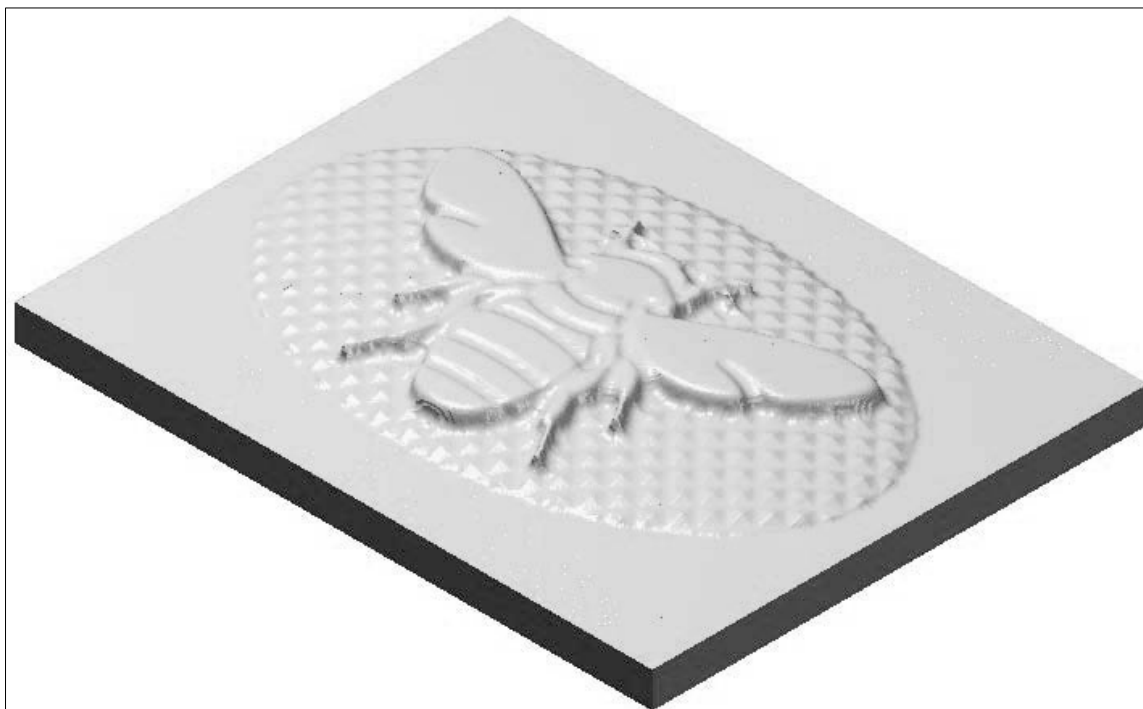
- Select the **Play** button to start simulation.



- The computer will now simulate the process of the part being machined.

Art

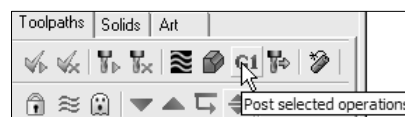
The finished part should appear as shown in the following picture



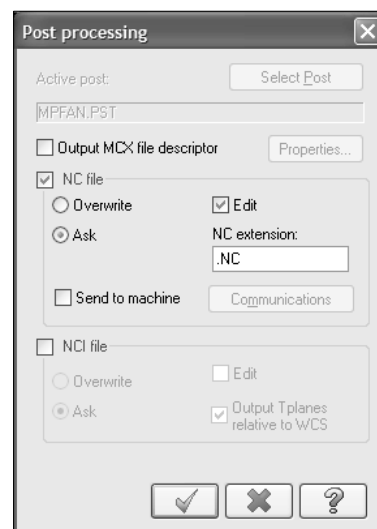
- Select the **Red X** button at the upper right corner to close **Verify**.

STEP 12: POST PROCESS THE FILE

- Select **Post selected operations** button in **Toolpaths Manager**.

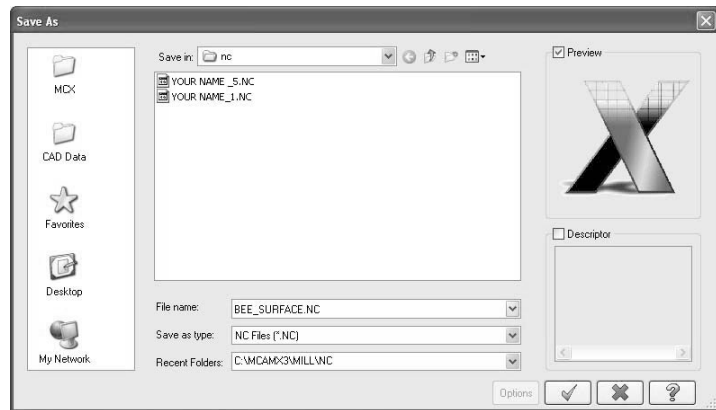


- Select the **OK** button. 

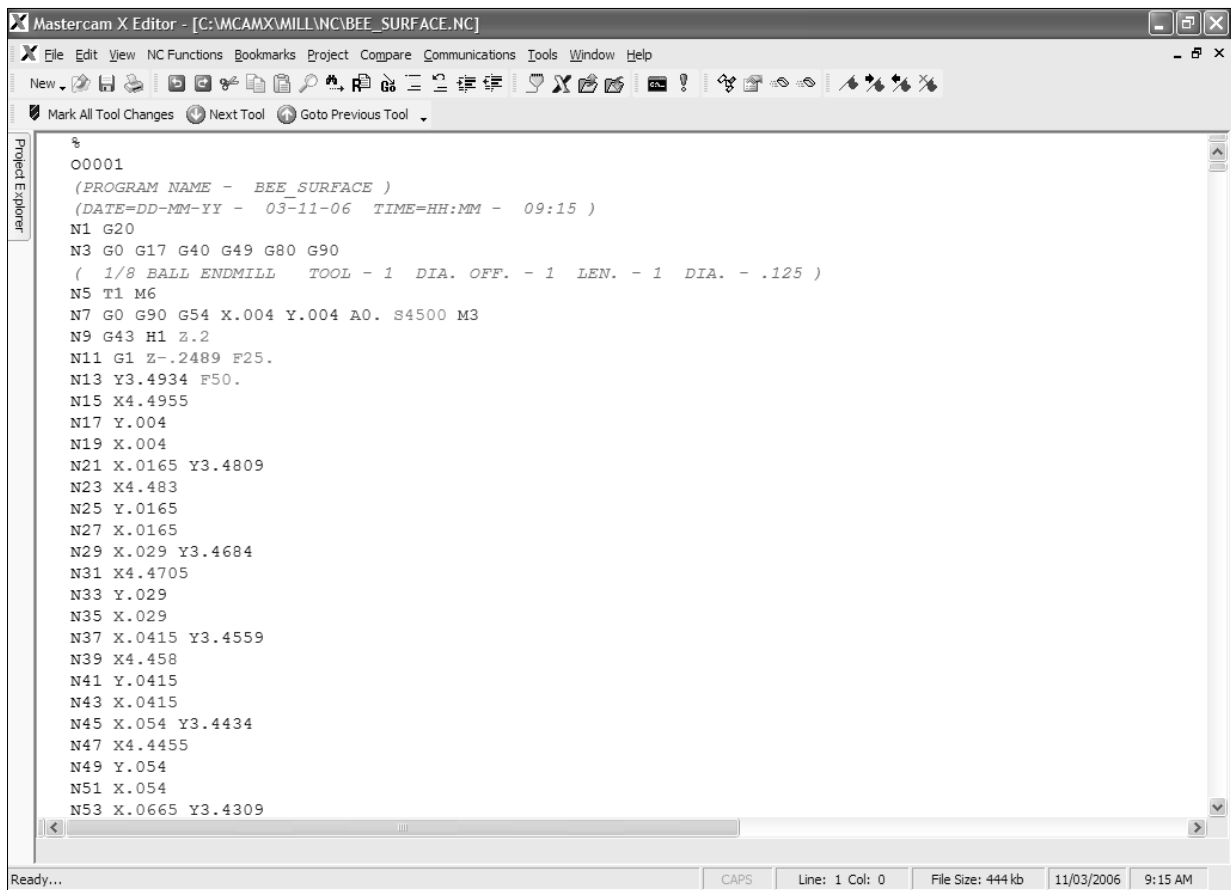


Art

➡ Select the **OK** button.



➡ The following screen will appear.



➡ Select the **Red X** button at the upper right corner to exit the **Editor**.

STEP 13: SAVE THE UPDATED MCX FILE

File



Save