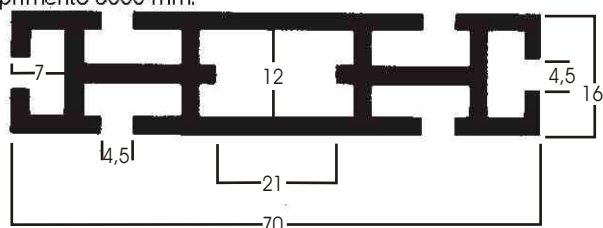
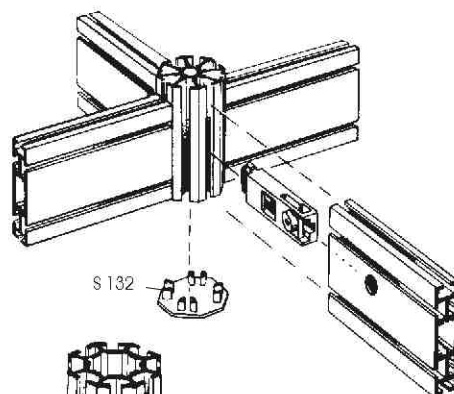
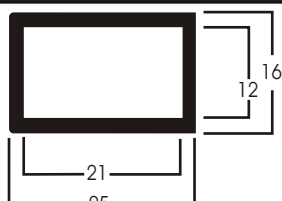
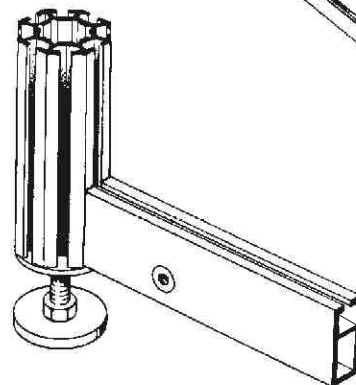


Perfil de travessa

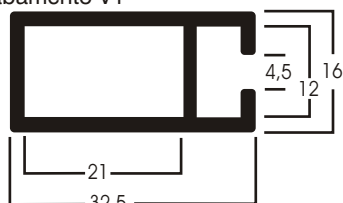
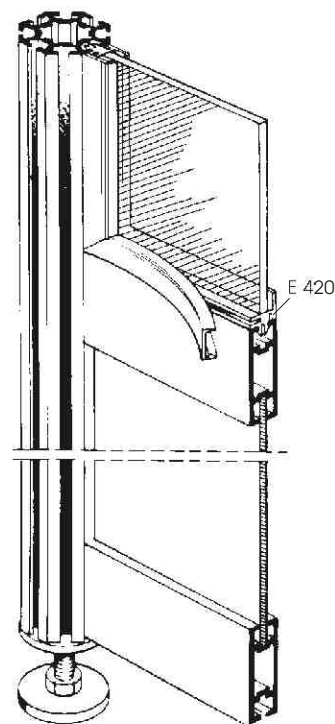
Alumínio ABNT 66050,
anodizado semi-fosco de acabamento V1
comprimento 5000 mm.


Z160

Perfil de travessa

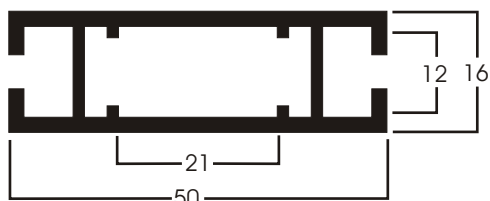
Alumínio ABNT 66050,
anodizado semi-fosco de acabamento V1
comprimento 5000 mm.


Z300

Perfil de travessa

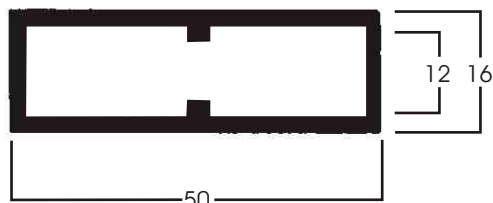
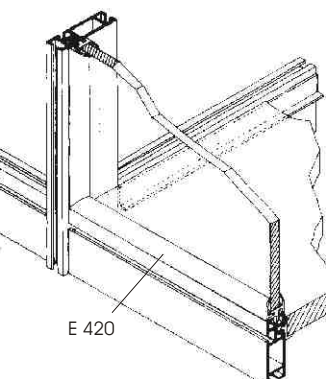
Alumínio ABNT 66050,
anodizado semi-fosco de acabamento V1
comprimento 5000 mm.


Z310

Perfil de travessa

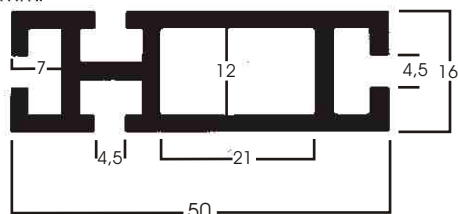
Alumínio ABNT 66050,
anodizado semi-fosco de acabamento V1
comprimento 5000 mm.


Z400
Perfil de travessa

Alumínio ABNT 66050,
anodizado semi-fosco de acabamento V1
comprimento 5000 mm.


Z410

Perfil de travessa

Alumínio ABNT 66050,
anodizado semi-fosco de acabamento V1
comprimento 5000 mm.


Z460