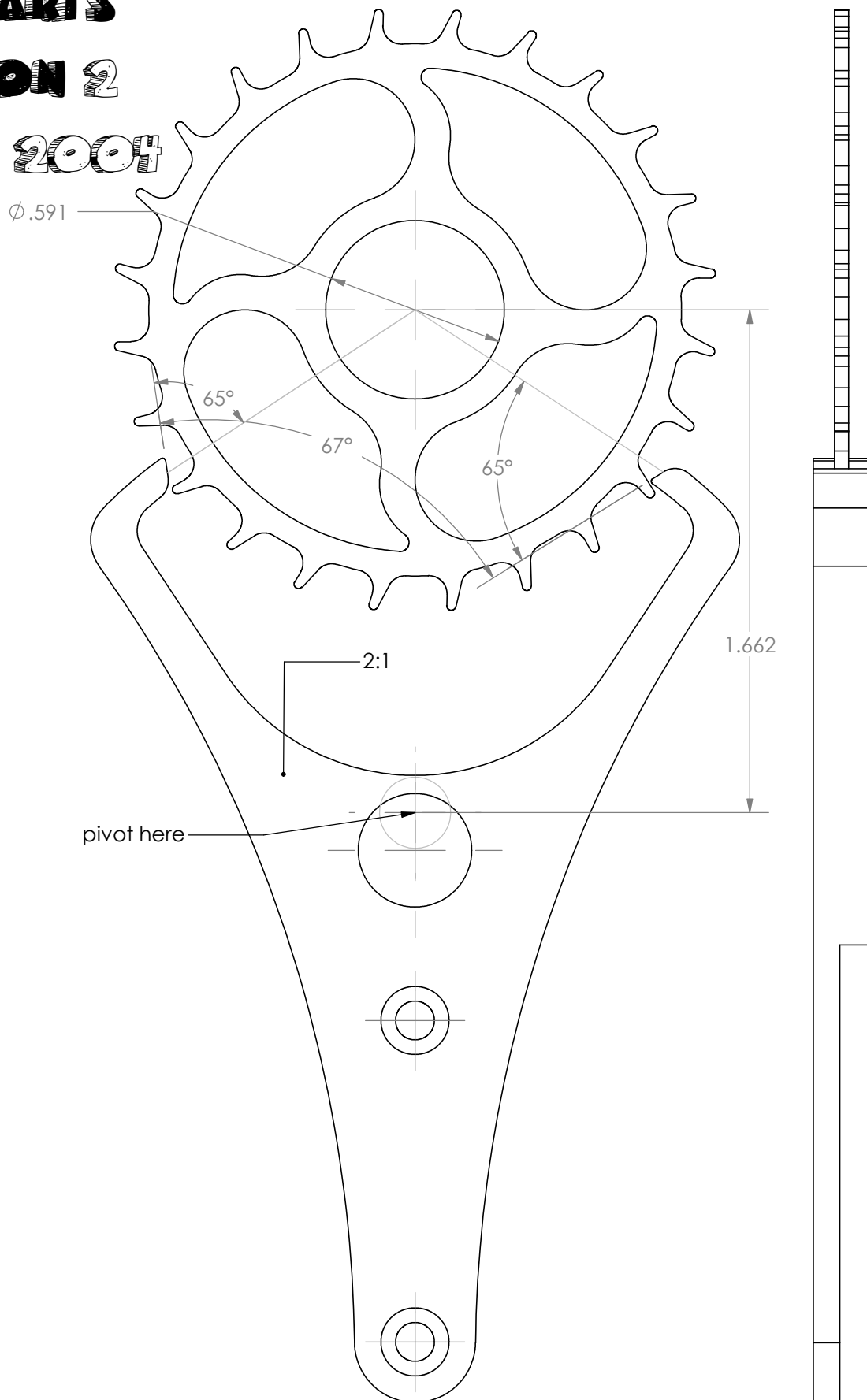


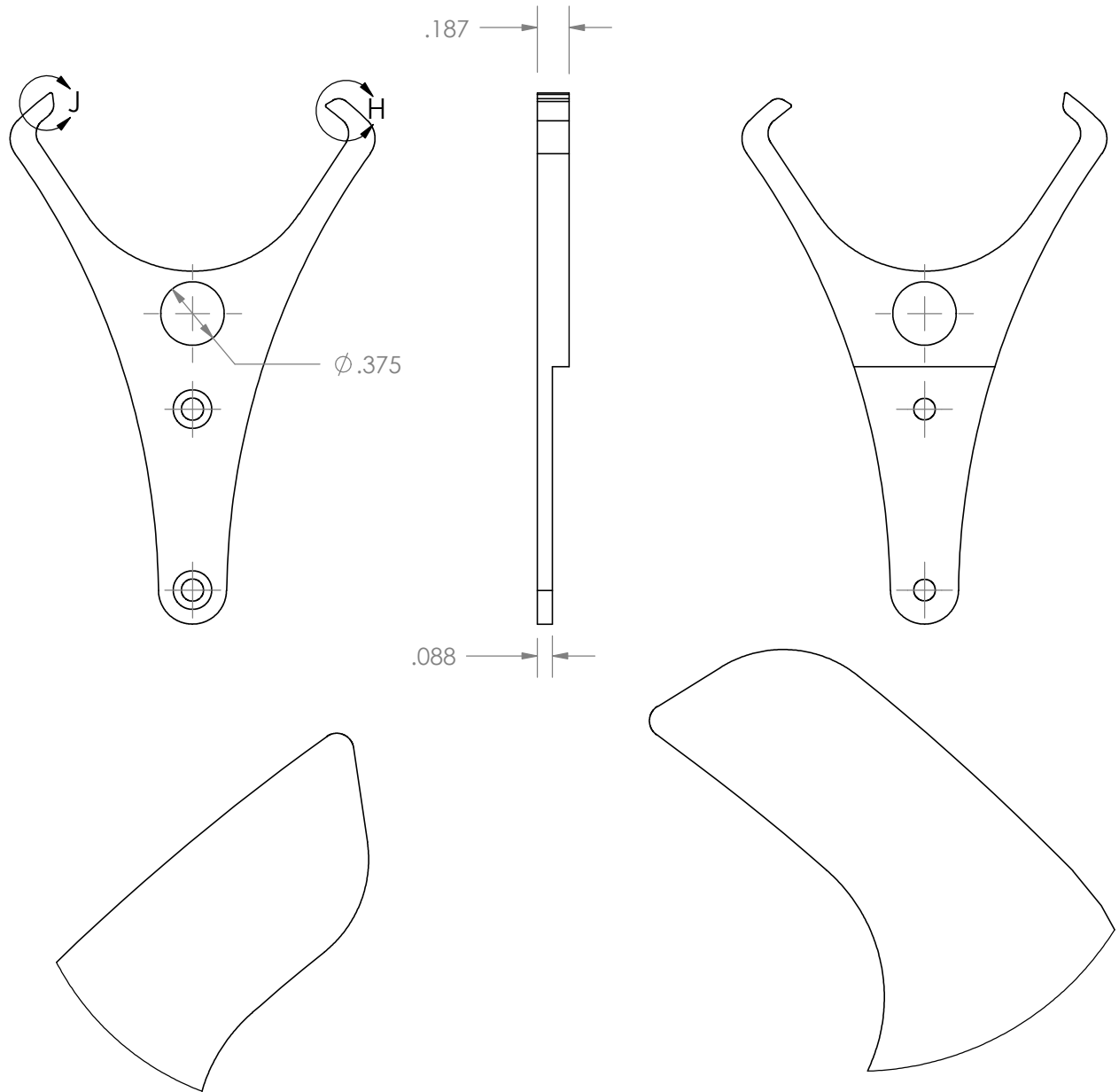
WORLDS SIMPLEST CLOCK

THE PARTS

VERSION 2

6 MAY 2004



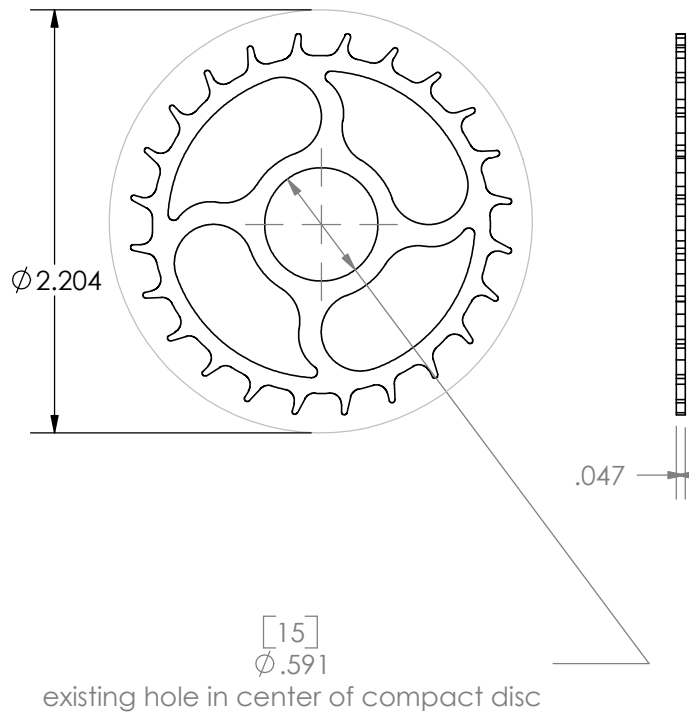


DETAIL J
SCALE 10 : 1

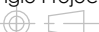
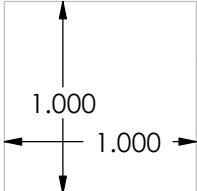
DETAIL H
SCALE 10 : 1

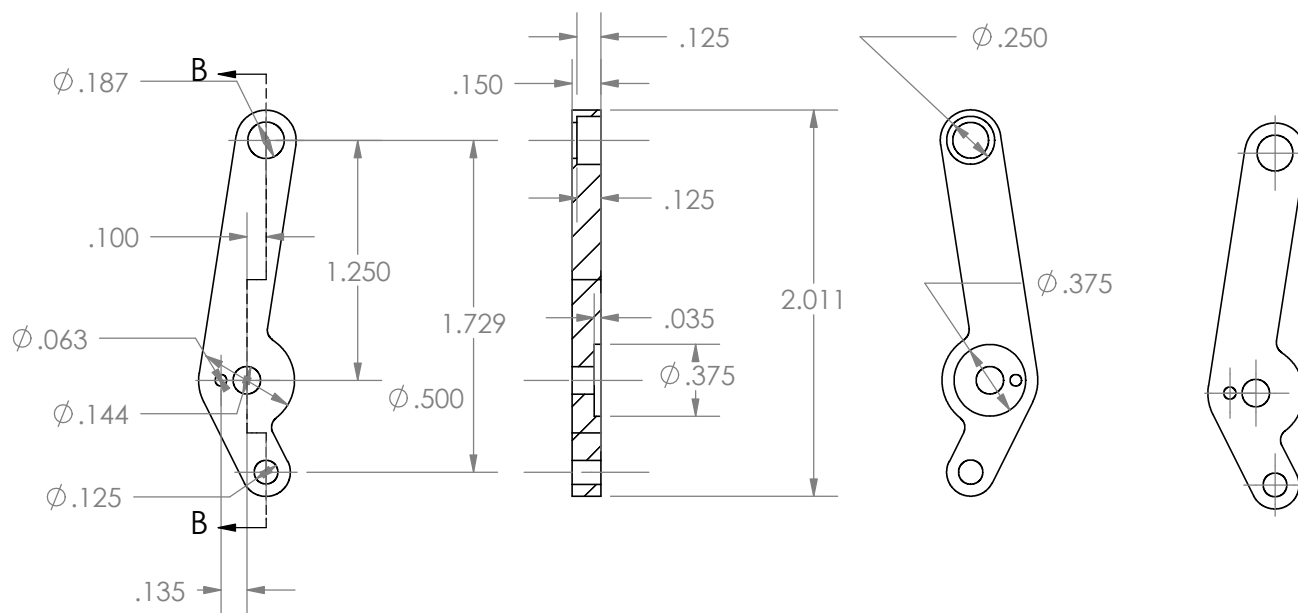
Drawing views on this page
are drawn 1:1 scale
Unless indicated otherwise

1	prelim		4-May-04
REV	Description		DATE
MATERIAL nylon	Inch Dimensions Tolerances $\pm .015"$ typ		DESCRIPTION compact disc lever
FINISH	OK to scale drawing if box on right is to scale		Project worlds simplest clock
DRAWN by: gmahony DATE Drawn: 4-May-04	Third Angle Projection 	File # worlds-simplest-parts-1	Page 2 of 11

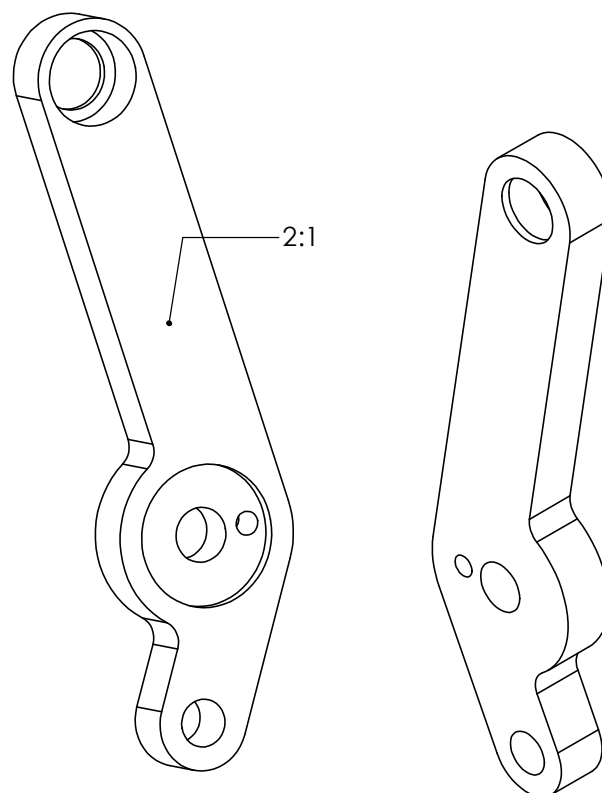


Drawing views on this page
are drawn 1:1 scale
Unless indicated otherwise

1	prelim release	4-May-04
REV	Description	DATE
MATERIAL compact disc-1mm thk Lexan FINISH DRAWN by: G Mahony DATE Drawn: 4-May-04		DESCRIPTION escape wheel from compact dis Project worlds simplest clock File # worlds-simplest-parts-1
Inch Dimensions Tolerances ±.015" typ OK to scale drawing if box on right is to scale Third Angle Projection		 

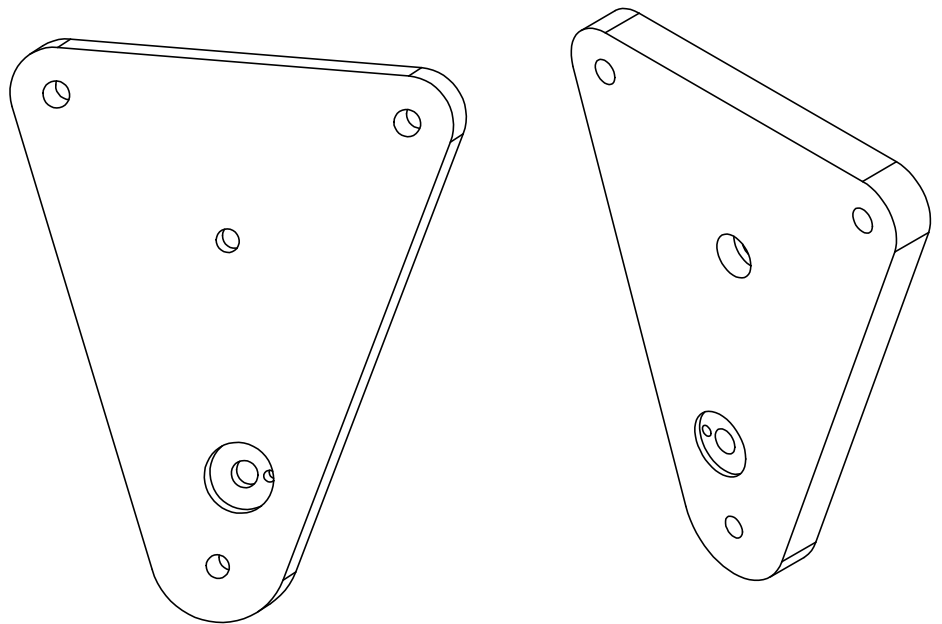
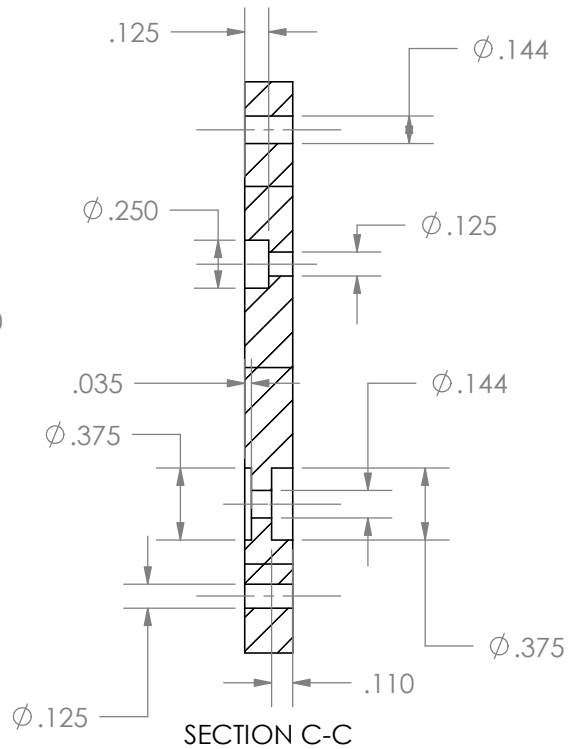
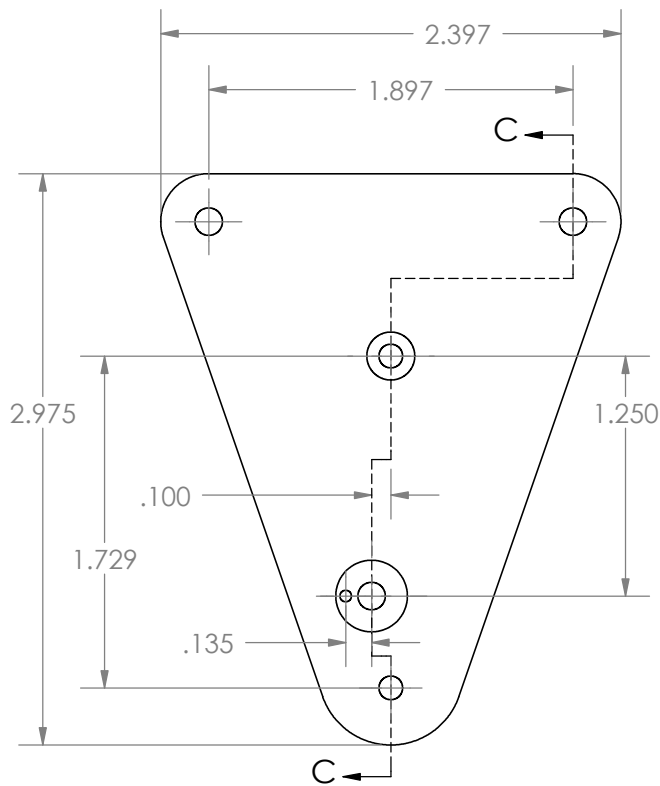


SECTION B-B



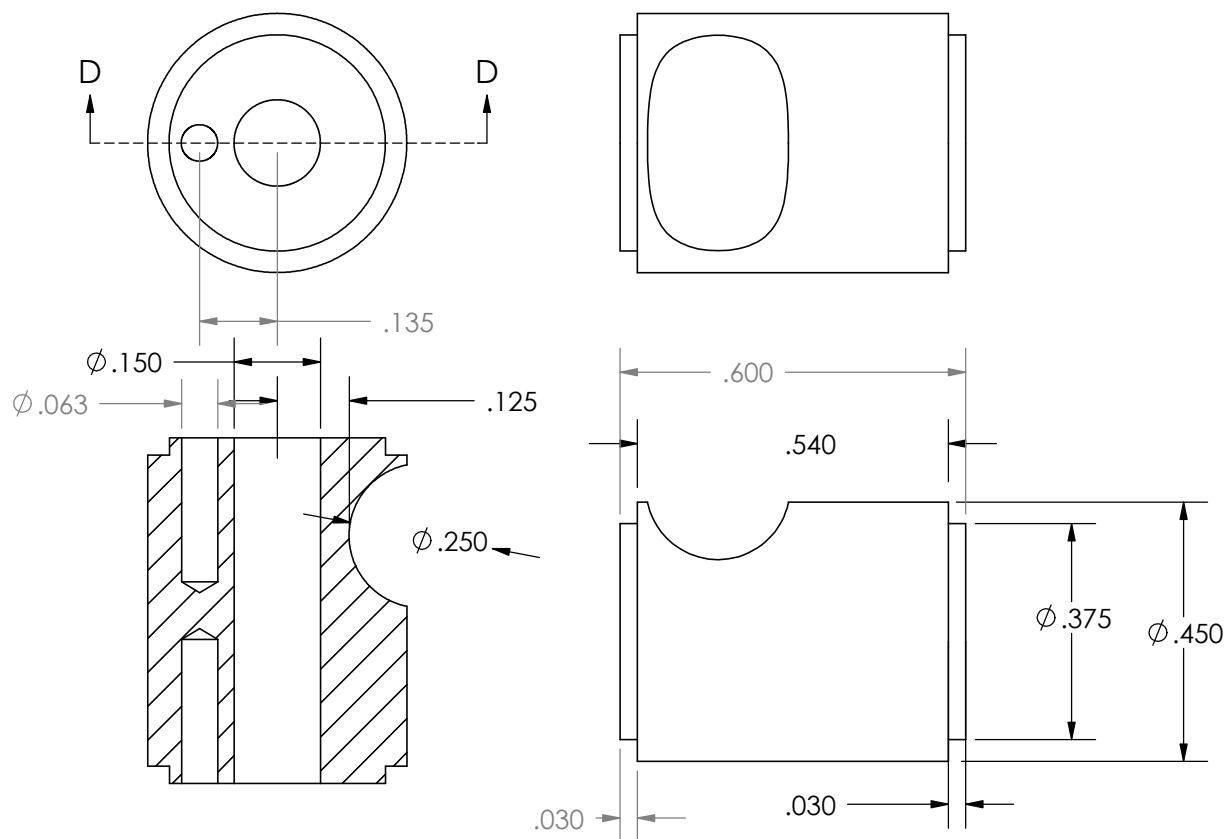
Drawing views on this page
are drawn 1:1 scale
Unless indicated otherwise

1	prelim release			26-Apr-04
REV	Description			DATE
MATERIAL Wood		Inch Dimensions Tolerances $\pm .015"$ typ		DESCRIPTION Front Plate
FINISH oil		OK to scale drawing if box on right is to scale		Project Worlds simplest clock
DRAWN by: G Mahony DATE Drawn: 26-Apr-04		Third Angle Projection		File # worlds-simplest-parts-1
				Page 4 of 11

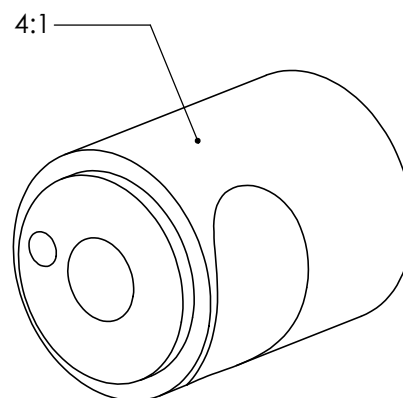


Drawing views on this page
are drawn 1:1 scale
Unless indicated otherwise


1	prelim release	26-Apr-04
REV	Description	DATE
MATERIAL Wood	Inch Dimensions Tolerances $\pm .015"$ typ	DESCRIPTION Baseplate
FINISH oil	OK to scale drawing if box on right is to scale	Project Worlds simplest clock
DRAWN by: G Mahony DATE Drawn: 26-Apr-04	Third Angle Projection 	File # worlds-simplest-parts-1

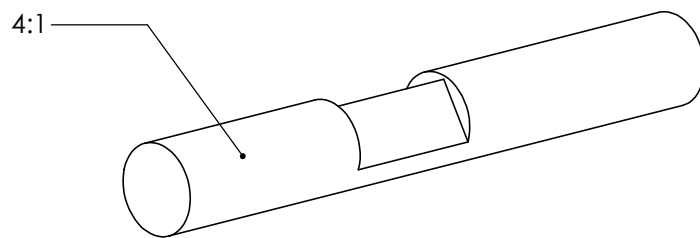
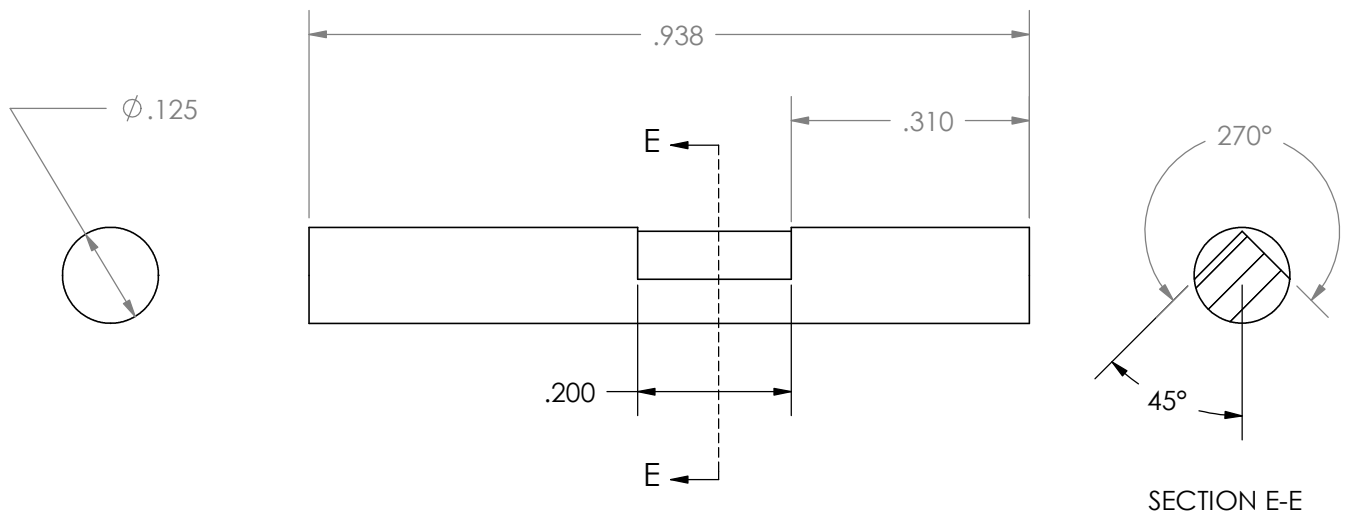


SECTION D-D

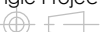


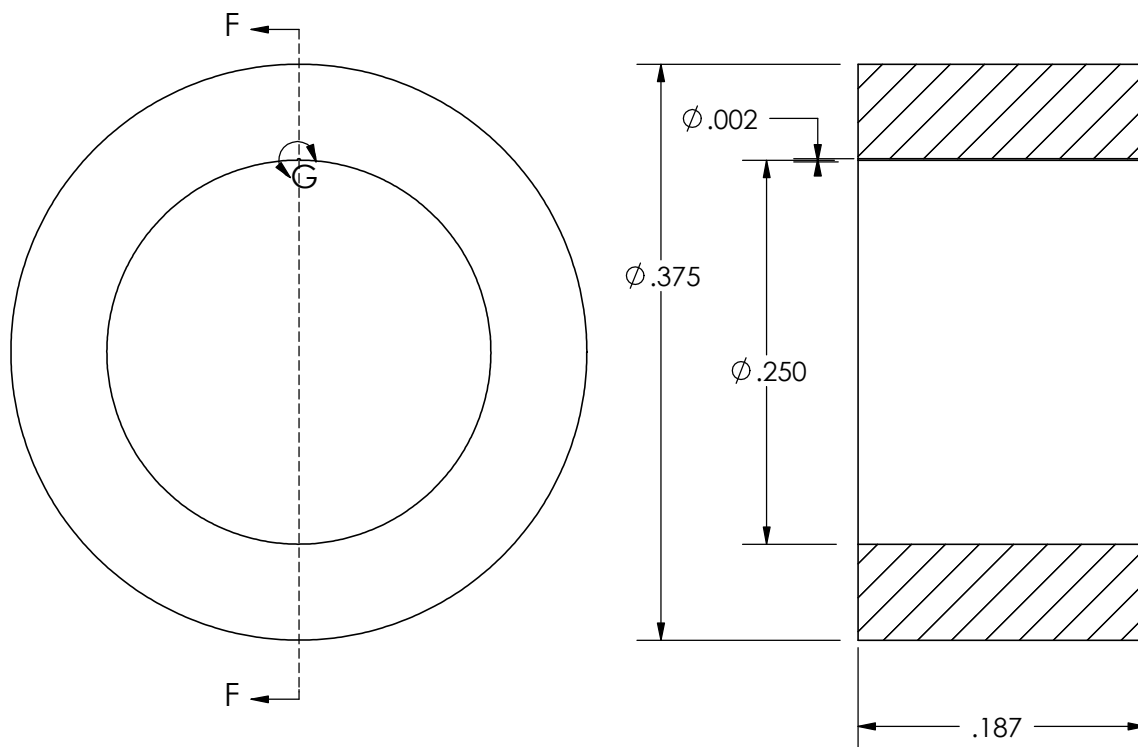
Drawing views on this page
are drawn 3:1 scale
Unless indicated otherwise

1	prelim release	26-Apr-04
REV	Description	DATE
MATERIAL Wood	Inch Dimensions Tolerances $\pm .015"$ typ	DESCRIPTION Standoff
FINISH oil	OK to scale drawing if box on right is to scale	Project Worlds simplest clock
DRAWN by: G Mahony DATE Drawn: 26-Apr-04	Third Angle Projection 	File # worlds-simplest-parts-1

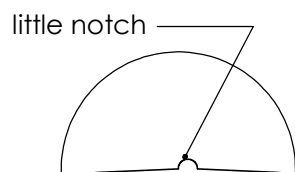


Drawing views on this page
are drawn 4:1 scale
Unless indicated otherwise

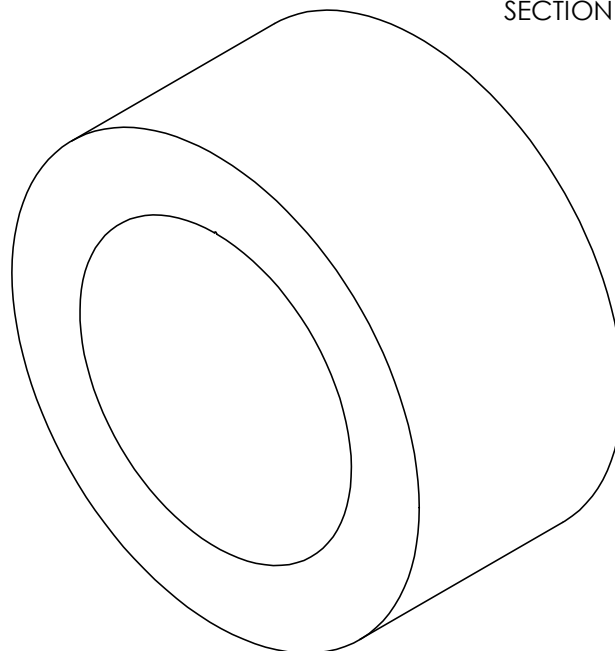
1	prelim release	26-Apr-04
REV	Description	DATE
MATERIAL Drill Rod Steel	Inch Dimensions Tolerances $\pm .015"$ typ	DESCRIPTION Lever Pivot Shaft
FINISH none	OK to scale drawing if box on right is to scale	Project Worlds simplest clock
DRAWN by: G Mahony DATE Drawn: 26-Apr-04	Third Angle Projection 	File # worlds-simplest-parts-1



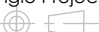
SECTION F-F

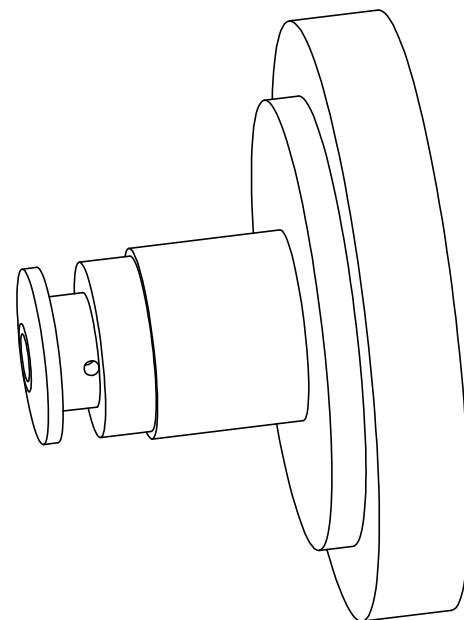
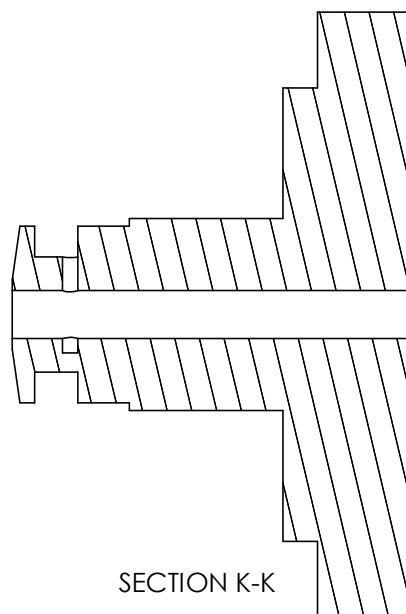
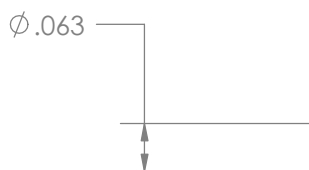
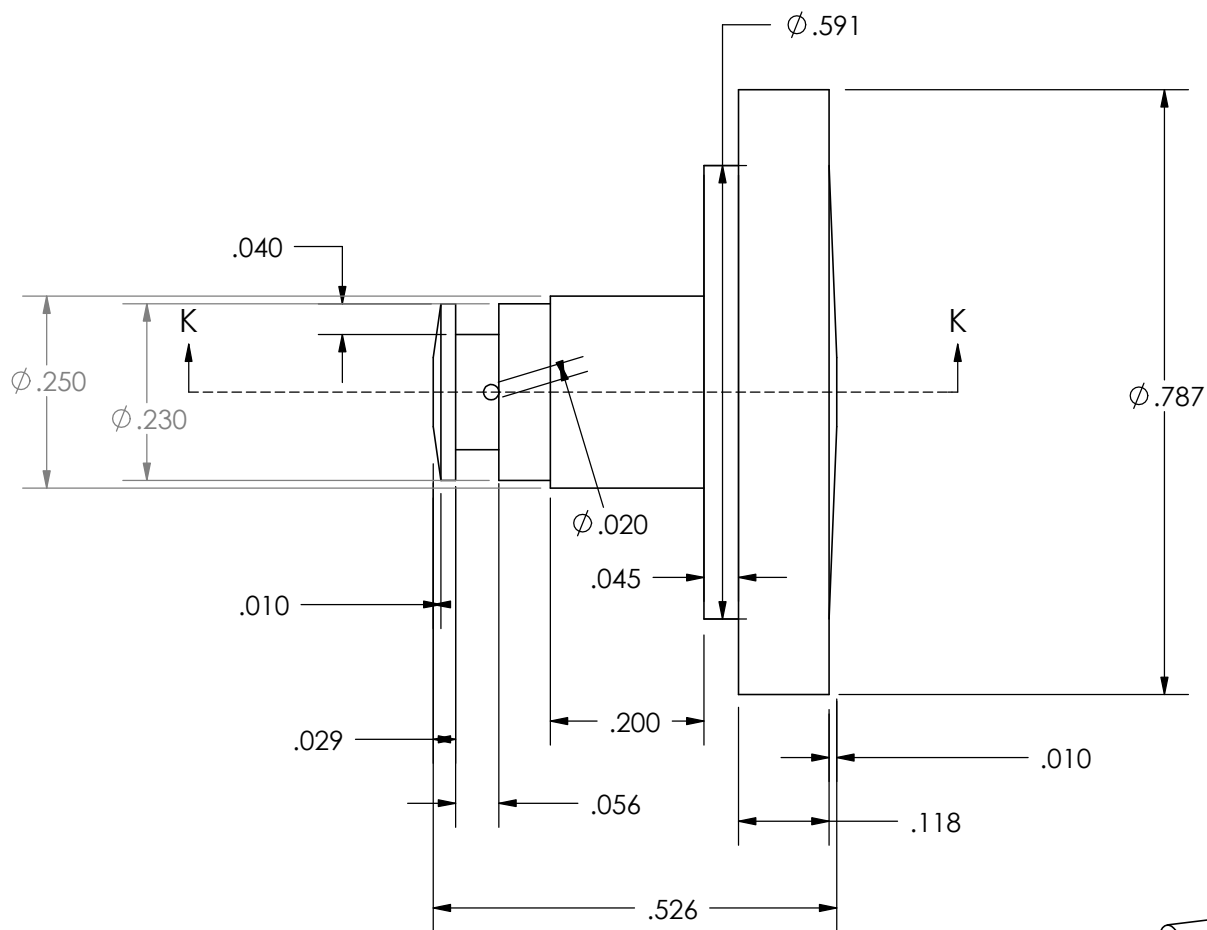


DETAIL G
SCALE 50 : 1




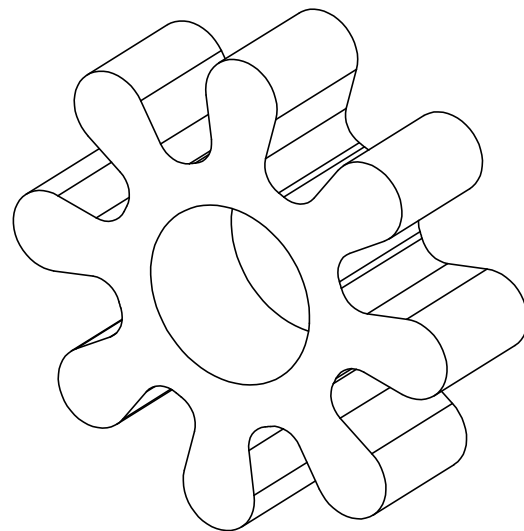
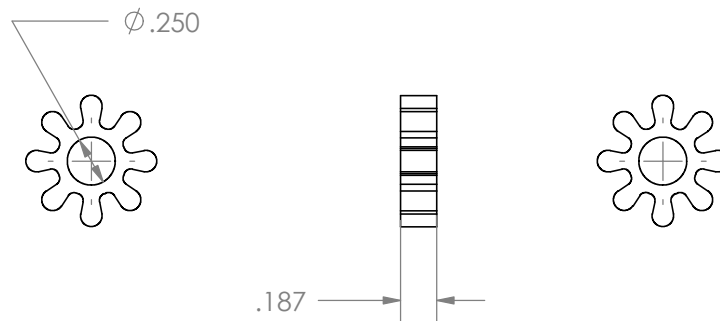
Drawing views on this page
are drawn 8:1 scale
Unless indicated otherwise

1	prelim release	26-Apr-04
REV	Description	DATE
MATERIAL Drill Rod Steel	Inch Dimensions Tolerances $\pm .015"$ typ	DESCRIPTION Lever Pivot disc
FINISH none	OK to scale drawing if box on right is to scale	Project Worlds simplest clock
DRAWN by: G Mahony DATE Drawn: 26-Apr-04	Third Angle Projection 	File # worlds-simplest-parts-1

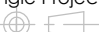


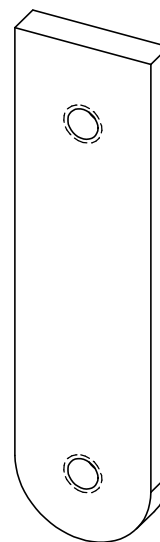
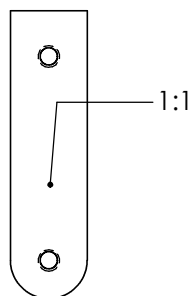
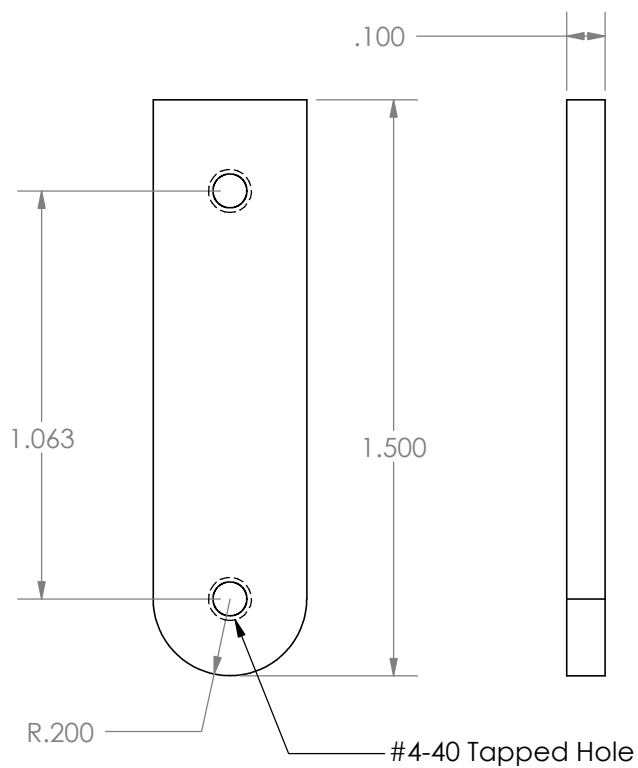
Drawing views on this page
are drawn 4:1 scale
Unless indicated otherwise

2	revised for compact disc	4-May-04
REV	Description	DATE
MATERIAL Wood	Inch Dimensions Tolerances $\pm .015"$ typ	DESCRIPTION Escape Wheel Shaft
FINISH Oil	OK to scale drawing if box on right is to scale	Project Worlds simplest clock
DRAWN by: G Mahony	Third Angle Projection	File #
DATE Drawn: 26-Apr-04		worlds-simplest-parts-1

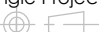


Drawing views on this page
are drawn 1:1 scale
Unless indicated otherwise

1	prelim release		
REV	Description		DATE
MATERIAL	Inch Dimensions	DESCRIPTION	
FINISH	Tolerances $\pm .015"$ typ	8 T-pinion-14DP	
	OK to scale drawing if box on right is to scale	Project	
DRAWN by: G Mahony	Third Angle Projection	File #	Page 10 of 11
DATE Drawn:		worlds-simplest-parts-1	



Drawing views on this page
are drawn 2:1 scale
Unless indicated otherwise

1	prelim release	5-May-04
REV	Description	DATE
MATERIAL Delrin	Inch Dimensions Tolerances $\pm .015"$ typ	DESCRIPTION film clamp
FINISH none	OK to scale drawing if box on right is to scale	Project worlds simplest clock
DRAWN by: G Mahony DATE Drawn: 5-May-04	Third Angle Projection 	File # worlds-simplest-parts-1