

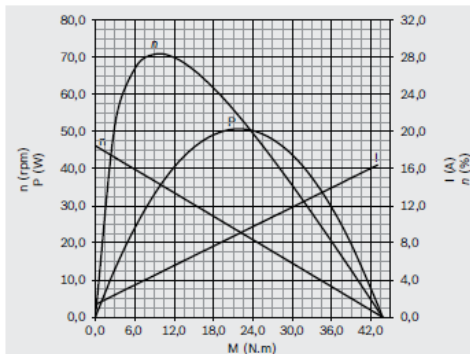
F006 WMO 310

CEP

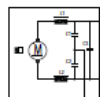
24 V 46 W



U_N	24 V
P_N	46 W
n_N	45 rpm
I_N	5,0 A
$I_{MAX.}$	18,6 A
M_N	10 N.m
M_A	48 N.m
I	63:1
Rot.	L / R
S	S1
IP	IP 44
kg	1,100 kg
Ⓢ	F 006 WMO 310



Vermelho/Rojo/Red (+) (-) Verde/Green CCW
 Verde/Green (+) (-) Vermelho/Rojo/Red CW



Vermelho/Rojo/Red

Verde/Green

