

Standard Runner Blocks, Steel Version

Runner Block SNH R1621

Slimline Normal High

- Runner block without ball chain:
for part numbers, see table
- Runner block with low friction seal
without ball chain**:
Part numbers R1621 xxx 21
- Runner block with ball chain:
Part numbers R1621 xxx 22
- Runner block with low friction seal
and ball chain**:
Part numbers R1621 xxx 23

Dynamic characteristics

Speed $v_{\max} = 5 \text{ m/s}$

Acceleration $a_{\max} = 500 \text{ m/s}^2$

Precision Runner Block

- Pre-lubricated

Custom version

Chrome-plated Resist CR

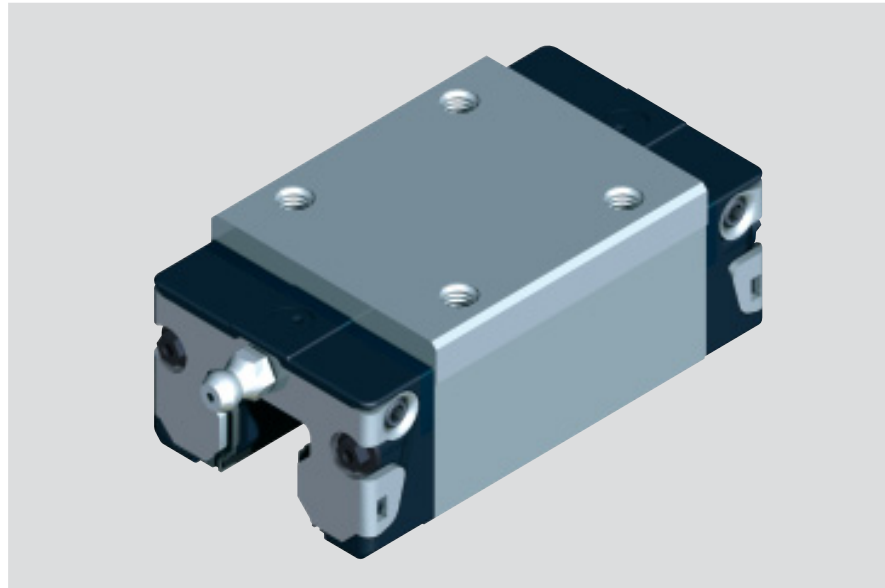
Resist CR – Runner Block housing
chromium-plated matt silver

- Pre-lubricated

Delivery only in precision class H:

Sizes 15, 25 only without preload

Sizes 30, 35, 45 only without preload or
2%C preload



Size	Accuracy Class	Part numbers for runner blocks for preload class		
		C0	C1	C2
15	N	R1621 194 20	R1621 114 20	R1621 124 20
	H	R1621 193 20	R1621 113 20	R1621 123 20
	P		R1621 112 20	R1621 122 20
25	N	R1621 294 20	R1621 214 20	R1621 224 20
	H	R1621 293 20	R1621 213 20	R1621 223 20
	P		R1621 212 20	R1621 222 20
30	N	R1621 794 20	R1621 714 20	R1621 724 20
	H	R1621 793 20	R1621 713 20	R1621 723 20
	P		R1621 712 20	R1621 722 20
35	N	R1621 394 20	R1621 314 20	R1621 324 20
	H	R1621 393 20	R1621 313 20	R1621 323 20
	P		R1621 312 20	R1621 322 20
45*	N	R1621 494 20	R1621 414 20	R1621 424 20
	H	R1621 493 20	R1621 413 20	R1621 423 20
	P		R1621 412 20	R1621 422 20

High Precision Runner Blocks

- Further improved movement accuracy
- Superior quality
- Highest precision
- Pre-lubricated
- Minimal oil preservation

Size	Accuracy Class	Part numbers for runner blocks for preload class		
		C1	C2	C3
15	XP	R1621 118 20	R1621 128 20	R1621 138 20
25	XP	R1621 218 20	R1621 228 20	R1621 238 20
30	XP	R1621 718 20	R1621 728 20	R1621 738 20
35	XP	R1621 318 20	R1621 328 20	R1621 338 20
45*	XP	R1621 418 20	R1621 428 20	R1621 438 20

* Not available with low friction seal

** Delivery of low friction seal in preloads for C0 and C1
(only for precision classes N, H, XP)

Preload Class

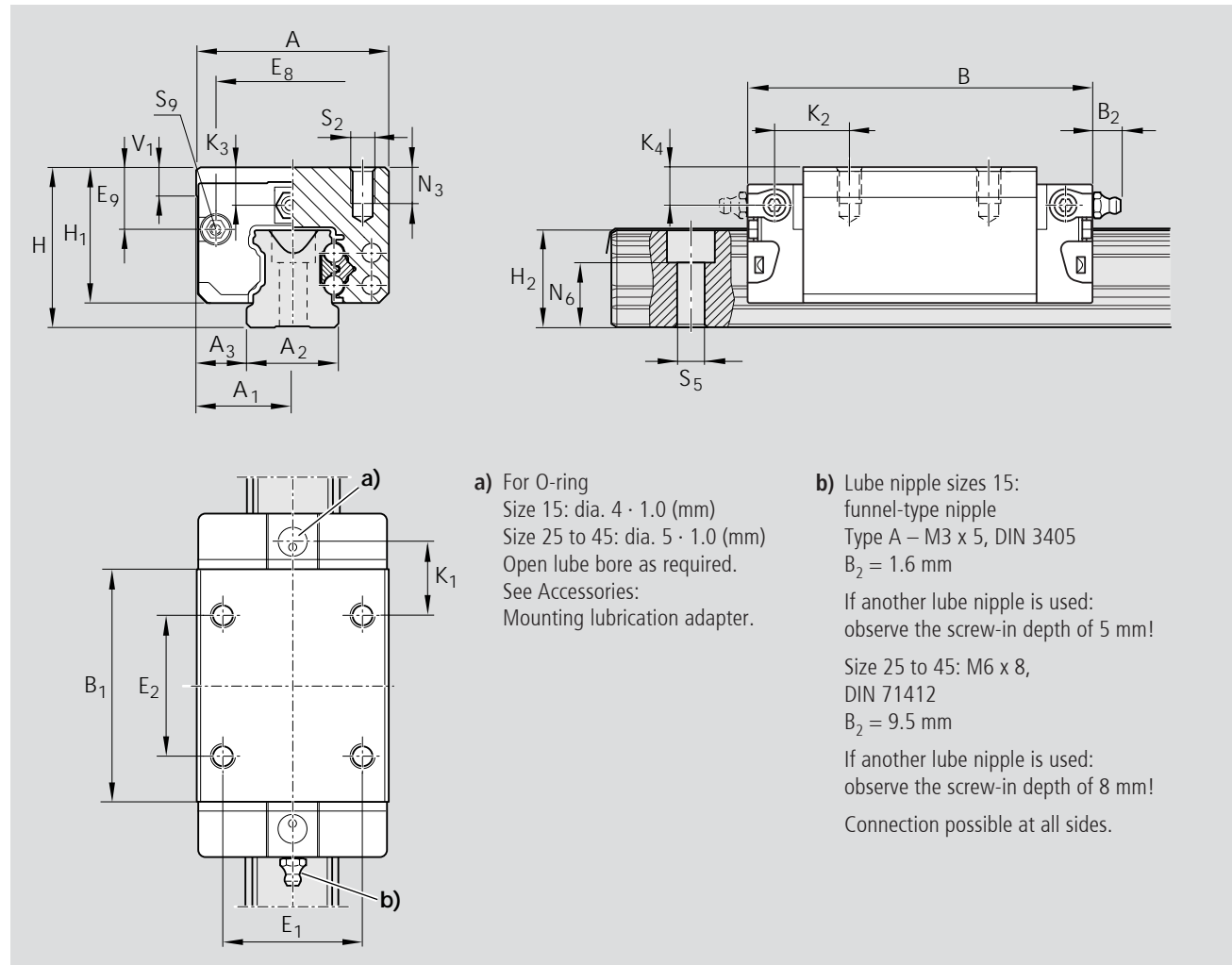
C0 = without Preload

C1 = Preload 2% C

C2 = Preload 8% C

C3 = Preload 13% C

For further technical information, please
see chapter on "General Technical Data
and Calculations".



Dimensions (mm)																			
Size	A	A ₁	A ₂	A ₃	B	B ₁	H	H ₁	H ₂ ¹⁾	H ₂ ²⁾	V ₁	E ₁	E ₂	E ₈	E ₉	K ₁	K ₂	K ₃	K ₄
15	34	17	15	9.5	58.2	39.2	28	23.90	16.30	16.20	5.0	26	26	24.55	10.70	10.00	11.60	7.20	7.20
25	48	24	23	12.5	86.2	57.8	40	33.90	24.45	24.25	7.5	35	35	38.30	15.50	17.45	18.60	9.50	9.50
30	60	30	28	16.0	97.7	67.4	45	38.35	28.55	28.35	7.0	40	40	48.40	17.60	20.00	21.70	9.05	9.05
35	70	35	34	18.0	110.5	77.0	55	47.40	32.15	31.85	8.0	50	50	58.00	24.35	20.50	22.00	13.90	13.90
45	86	43	45	20.5	137.6	97.0	70	60.30	40.15	39.85	10.0	60	60	69.80	30.90	27.30	29.30	18.20	18.20

¹⁾ Dimension H₂ with rail seal cover strip

²⁾ Dimension H₂ without rail seal cover strip

Dimensions (mm)							Load capacities (N) ³⁾		Moments (Nm)			
Size	N ₃	N ₆ ±0.5	S ₂	S ₅	S ₉	Mass (kg)	C dyn.	C ₀ stat.	M _t dyn.	M _{t0} stat.	M _L dyn.	M _{L0} stat.
15	6.0	10.3	M4	4.4	M2.5-3.5 deep	0.20	7 800	13 500	74	130	40	71
25	9.0	15.2	M6	7.0	M3-5 deep	0.60	22 800	30 400	320	430	180	240
30	12.0	17.0	M8	9.0	M3-5 deep	0.95	31 700	41 300	540	720	290	380
35	13.0	20.5	M8	9.0	M3-5 deep	1.55	41 900	54 000	890	1 160	440	565
45	18.0	23.5	M10	14.0	M4-7 deep	3.00	68 100	85 700	1 830	2 310	890	1 130

³⁾ Load capacities for version without ball chain. Load capacities for version with ball chain, see Product Overview with Load Capacities.

Determination of the dynamic of the load capacities and moments is based on 100,000 m of stroke travel. Often only 50,000 m are actually stipulated. Comparison: Value C, M_t und M_L per table multiplied by 1.26.

Standard Runner Blocks, Steel Version

Runner Block SNH R1621

Slimline Normal High

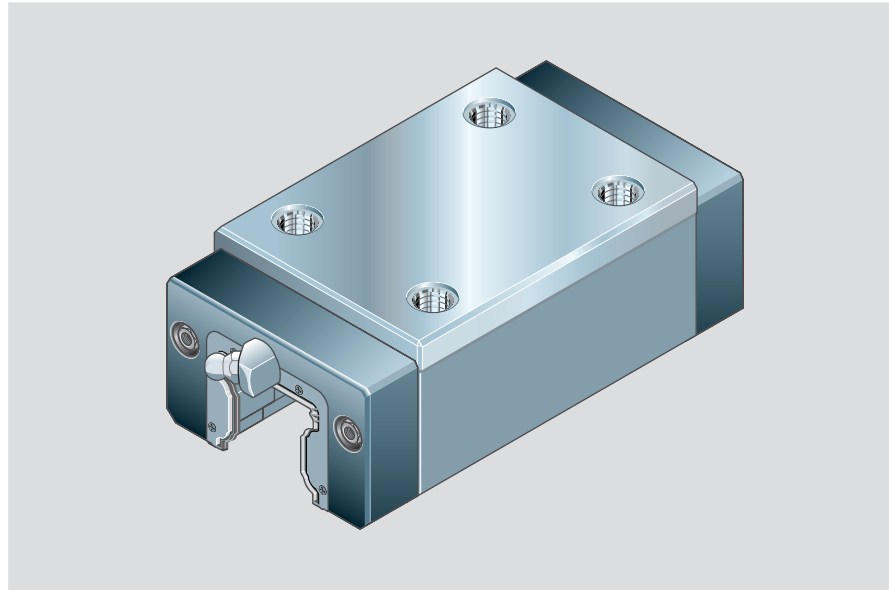
- Runner block without ball chain:
for part numbers, see table

Dynamic characteristics

Speed $v_{\max} = 3 \text{ m/s}$

Acceleration $a_{\max} = 250 \text{ m/s}^2$

Calculations



Precision Runner Block

- Not Pre-lubricated

Size	Accuracy Class	Part numbers for runner blocks for preload class			
		C0	C1	C2	C3
55	N	R1621 594 10	R1621 514 10	R1621 524 10	
	H	R1621 593 10	R1621 513 10	R1621 523 10	
	P		R1621 512 10	R1621 522 10	R1621 532 10

Custom version Chrome-plated Resist CR

Resist CR – Chromium-plated matt silver
runner block housing

- Not Pre-lubricated

Size	Accuracy Class	Part numbers for runner blocks for preload class	
		C0	C1
55	H	R1621 593 60	R1621 513 60

Preload Class

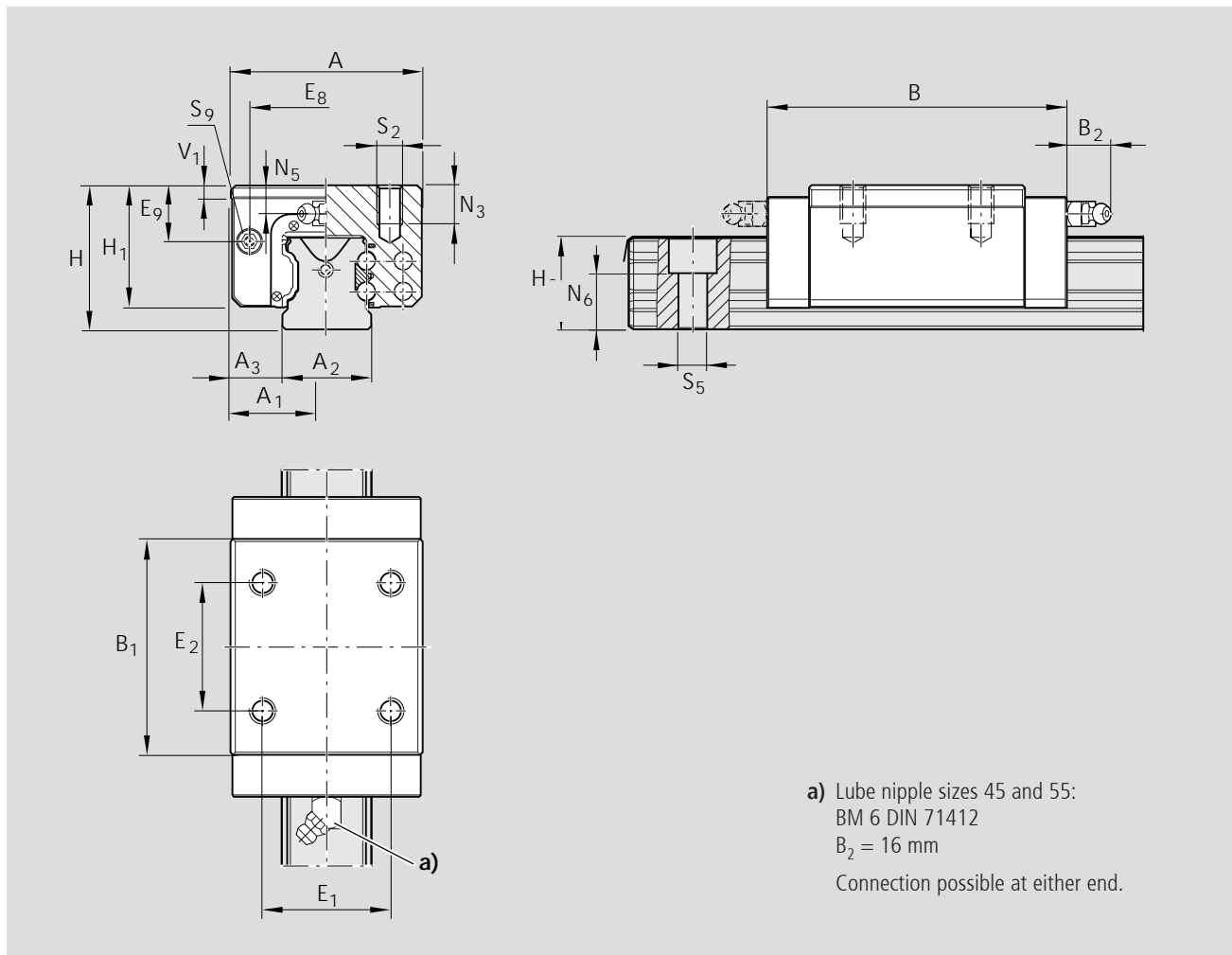
C0 = without Preload

C1 = Preload 2% C

C2 = Preload 8% C

C3 = Preload 13% C

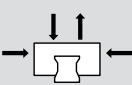
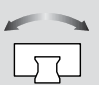
For further technical information, please
see chapter on "General Technical Data
and Calculations".



Dimensions (mm)																
Size	A	A ₁	A ₂	A ₃	B	B ₁	H	H ₁	H ₂ ¹⁾	H ₂ ²⁾	V ₁	E ₁	E ₂	E ₈	E ₉	N ₃
55	100	50	53	23.5	159.0	115.5	80	67.0	48.15	47.85	12.0	75	75	80.0	32.3	19

¹⁾ Dimension H₂ with rail seal cover strip

²⁾ Dimension H₂ without rail seal cover strip

Dimensions (mm)							Load capacities (N)		Moments (Nm)			
							 C dyn. C ₀ stat.		 Mt dyn. Mt ₀ stat.			
Size	N ₅	N ₆ ^{±0.5}	S ₂	S ₅	S ₉	Mass (kg)					M _L dyn.	M _{L0} stat.
55	19.0	29.0	M12	16.0	M5-8 deep	4.70	98 200	121 400	3 100	3 860	1 540	1 905