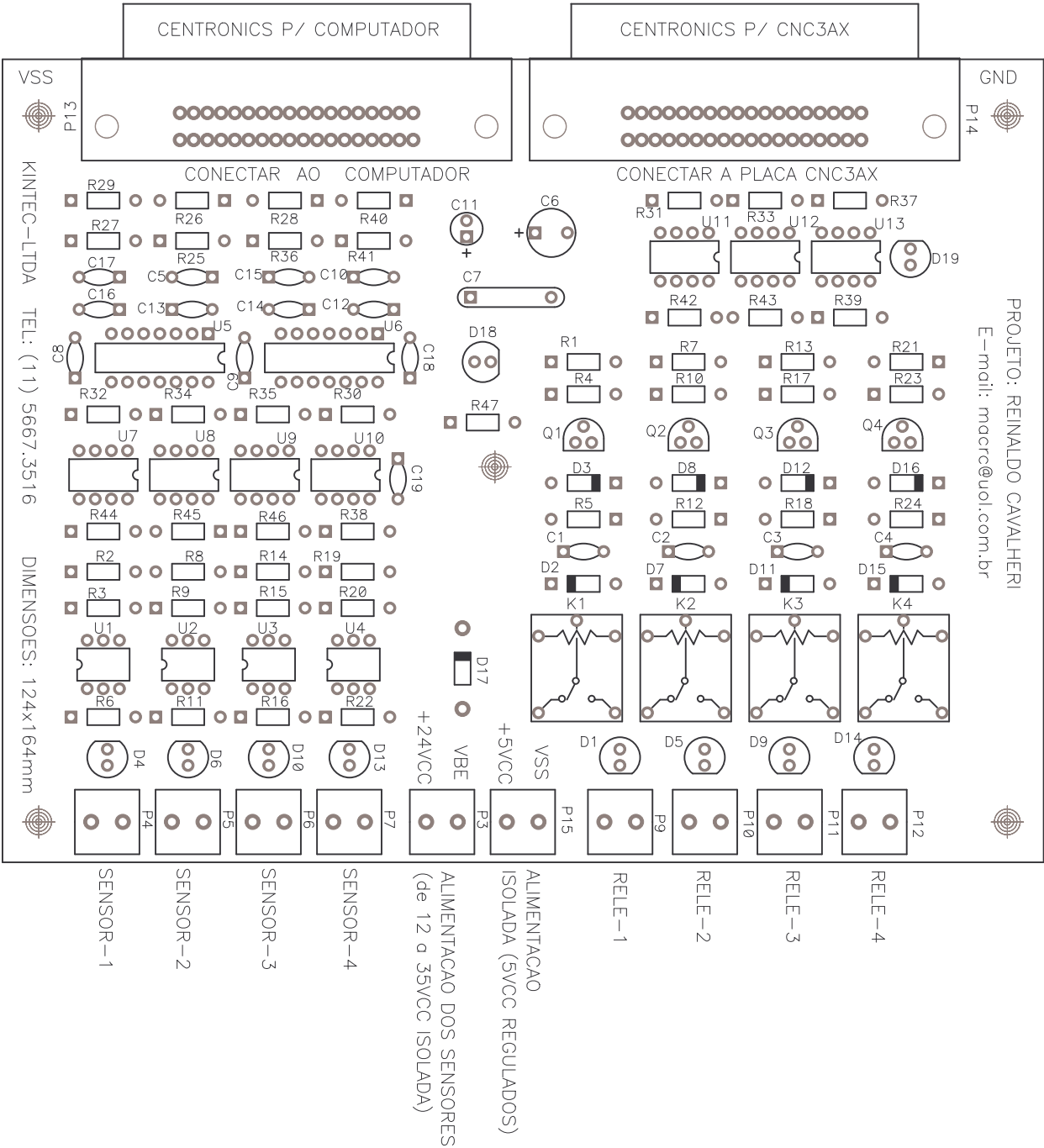
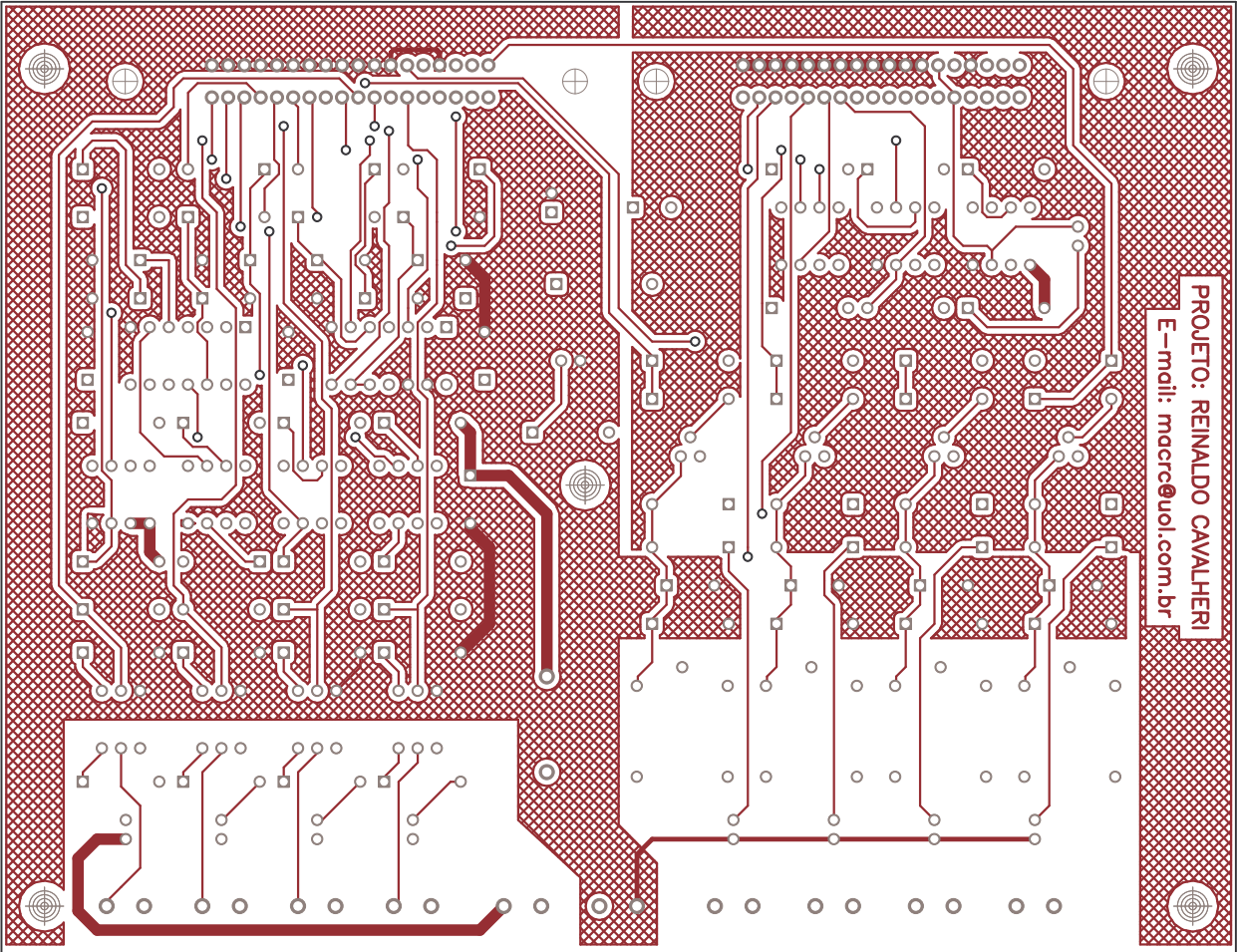


Drill Table			
Hole Dia (inch)	Symbol	Quantity	Plated
0.0280	+	30	Yes
0.0380	X	380	Yes
0.0450	Y	22	Yes
0.1300	⊗	4	Yes
0.2000	⊠	5	Yes

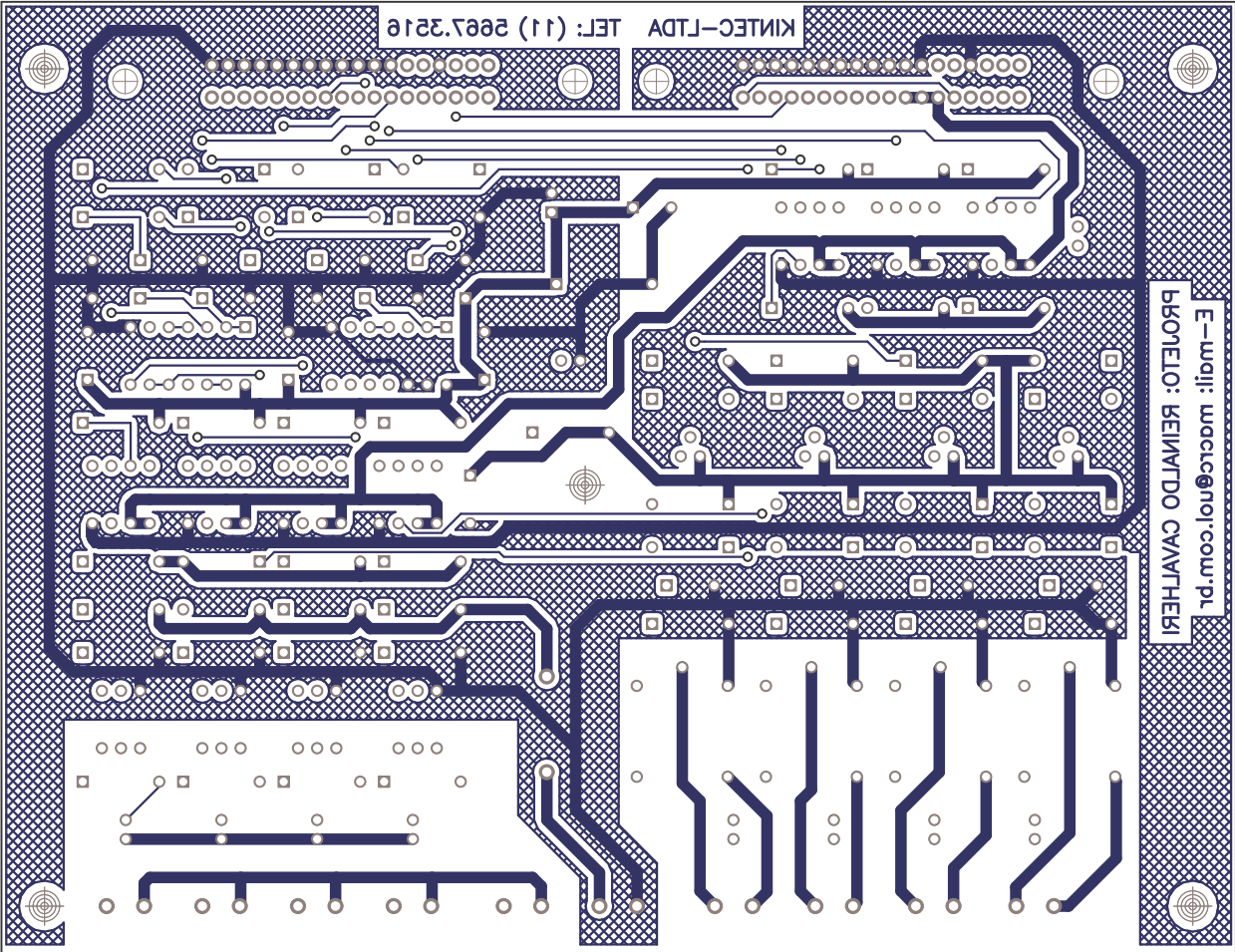
ATENCAO
NAO INVERTER ESTES CONECTORES COM O RISCO DE QUEIMAR O COMPUTADOR.

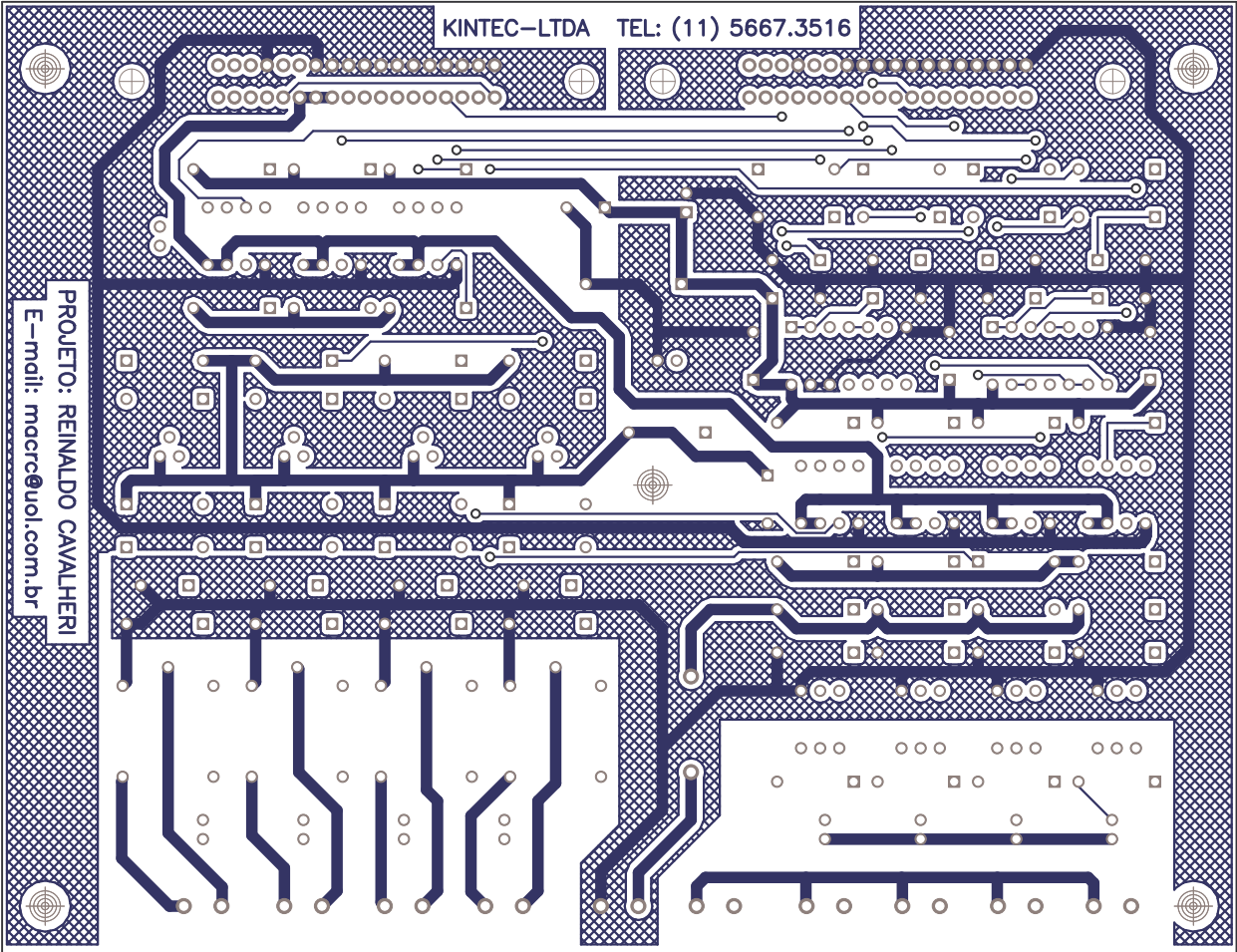


Drill Table			
Hole Dia (inch)	Symbol	Quantity	Plated
0.0280	+	30	Yes
0.0380	X	380	Yes
0.0450	Y	22	Yes
0.1300	⊣	4	Yes
0.2000	⊠	5	Yes

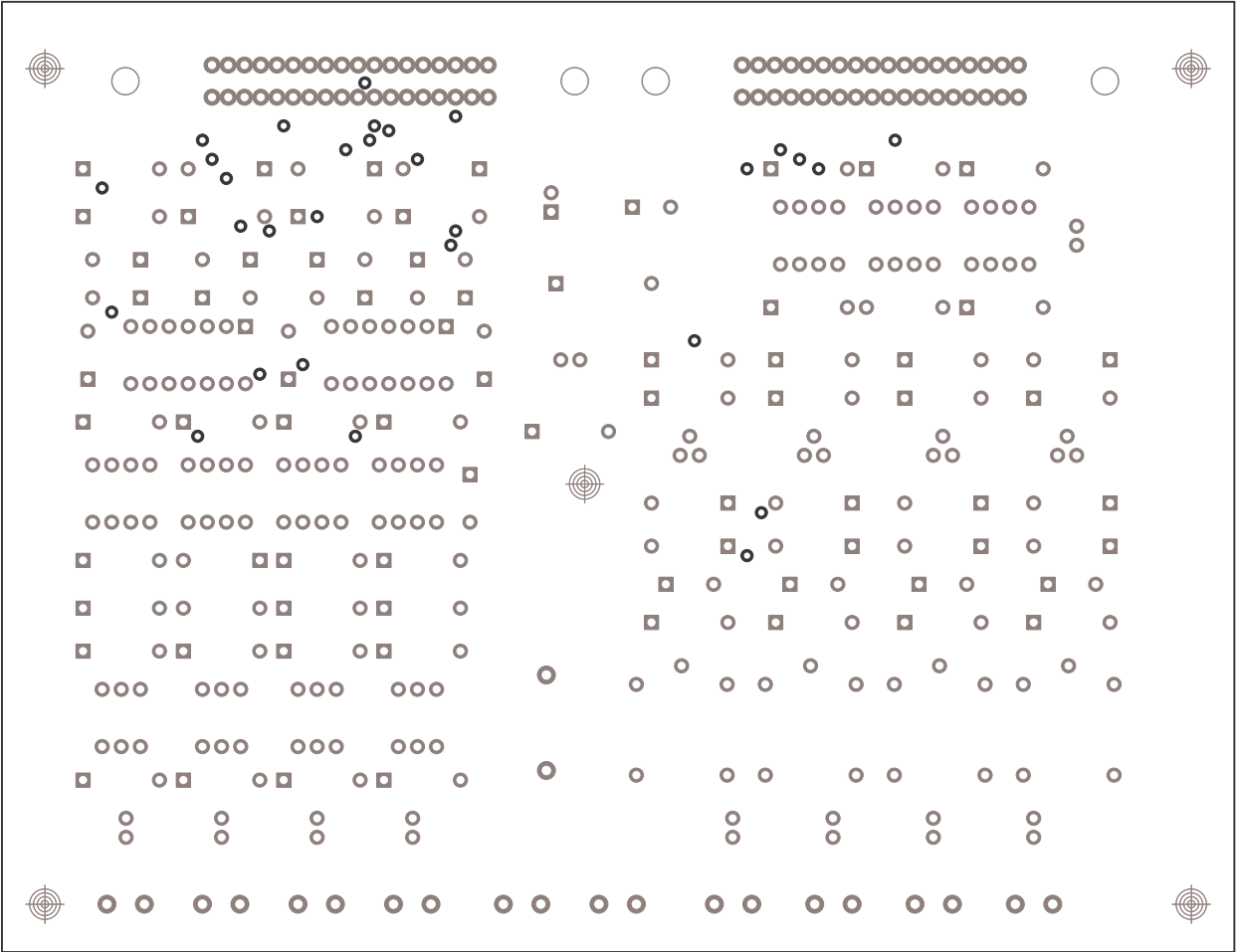


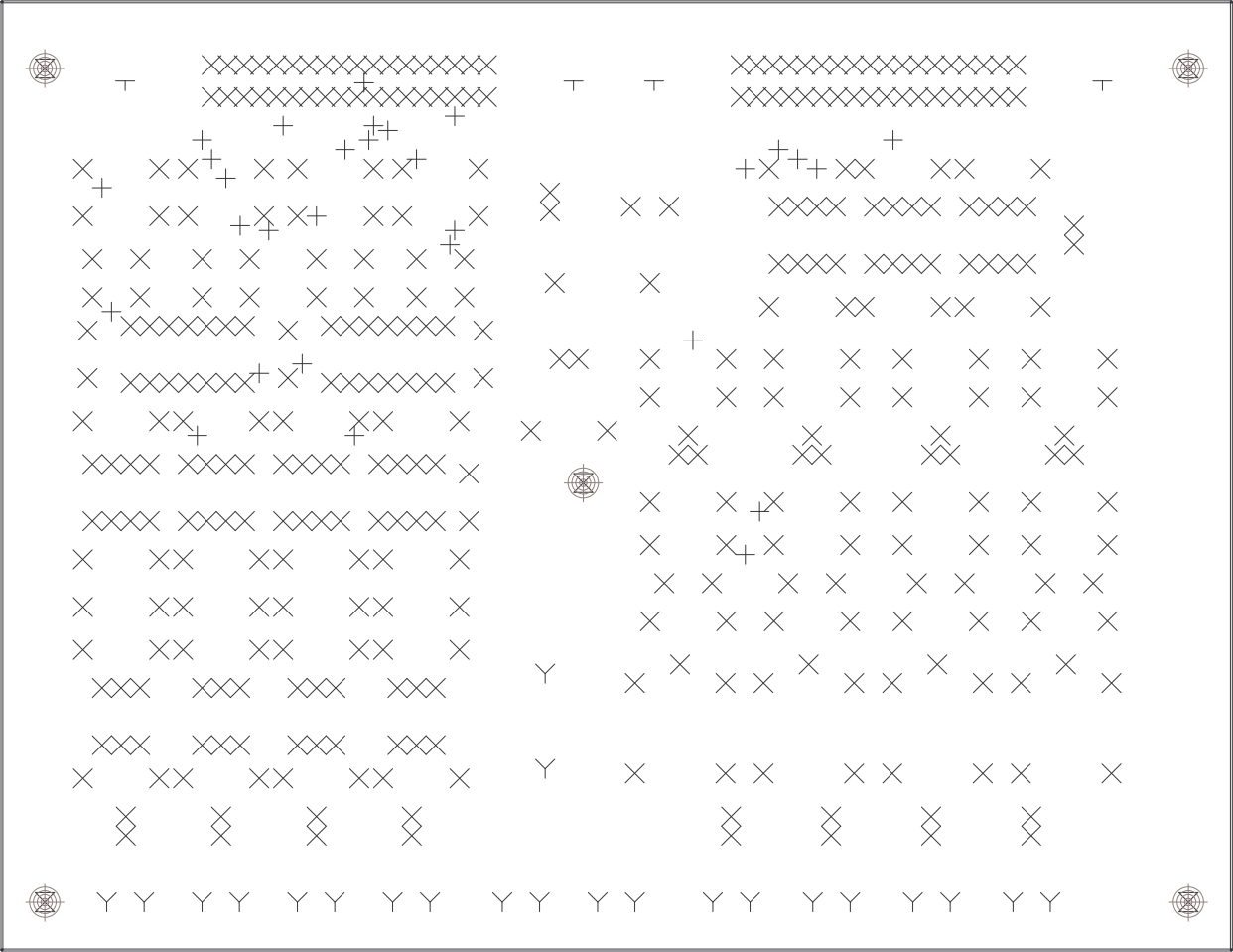
Drill Table			
Hole Dia (inch)	Symbol	Quantity	Plated
0.0280	+	30	Yes
0.0380	X	380	Yes
0.0450	Y	22	Yes
0.1300	⊣	4	Yes
0.2000	⊠	5	Yes





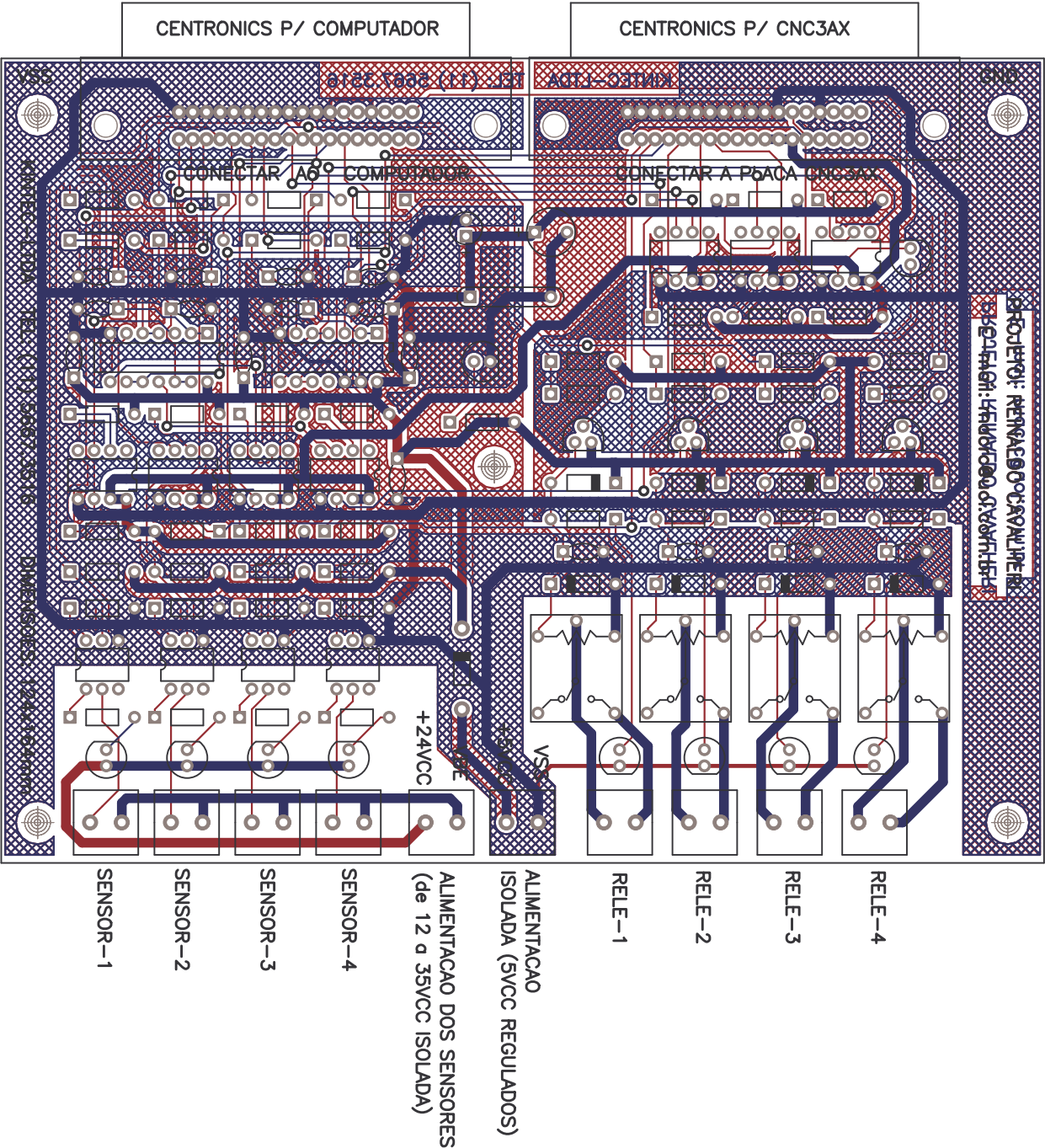
Drill Table			
Hole Dia (inch)	Symbol	Quantity	Plated
0.0280	+	30	Yes
0.0380	X	380	Yes
0.0420	Y	22	Yes
0.1300	-	4	Yes
0.2000	Σ	2	Yes

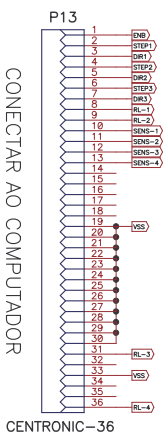




Drill Table			
Hole Dia (inch)	Symbol	Quantity	Plated
0.0280	+	30	Yes
0.0380	X	380	Yes
0.0450	Y	22	Yes
0.1300	⊥	4	Yes
0.2000	⊗	5	Yes

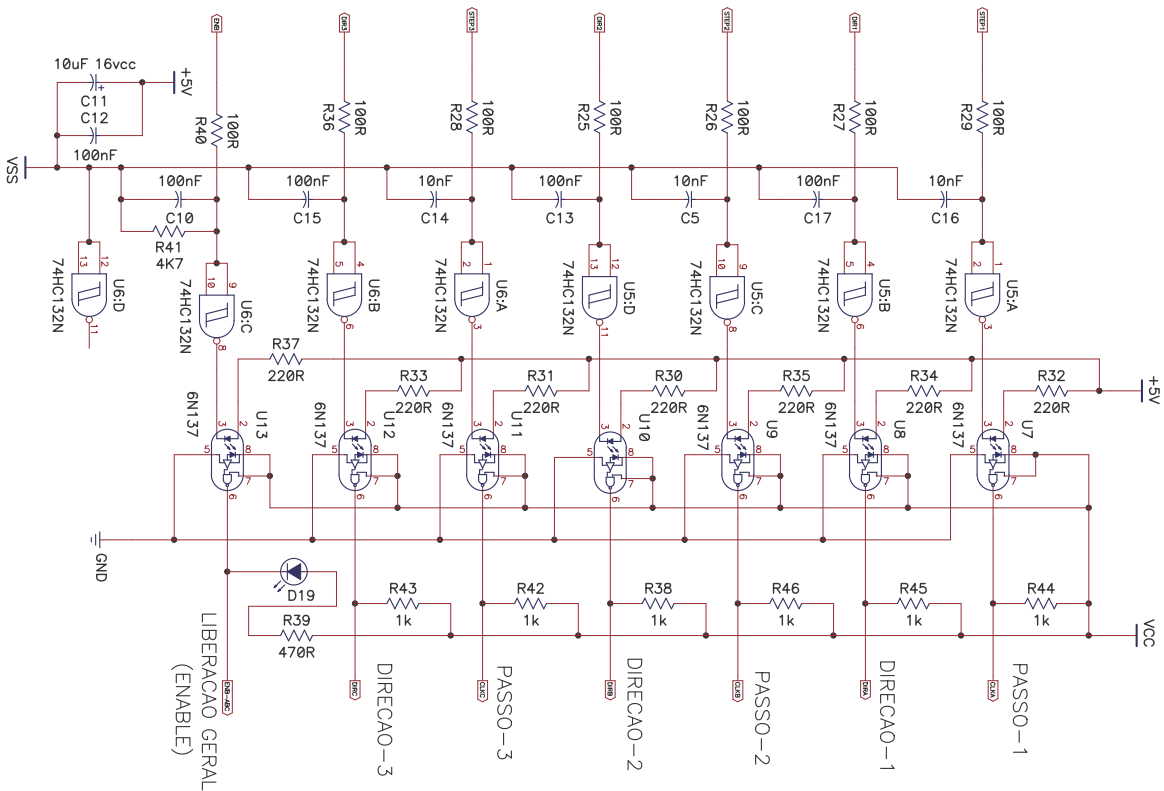
ATENCAO
 NAO INVERTER ESTES CONECTORES COM O RISCO DE QUEIMAR O COMPUTADOR.





CONECTAR AO COMPUTADOR

CENTRONIC-36



LIBERACAO GERAL
(ENABLE)

DIRECAO-3

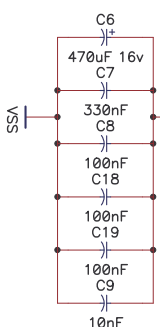
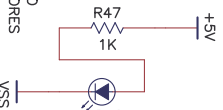
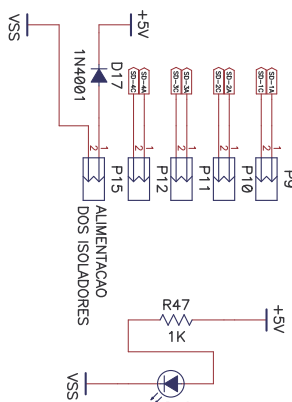
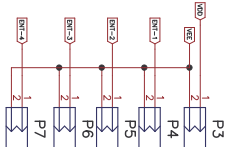
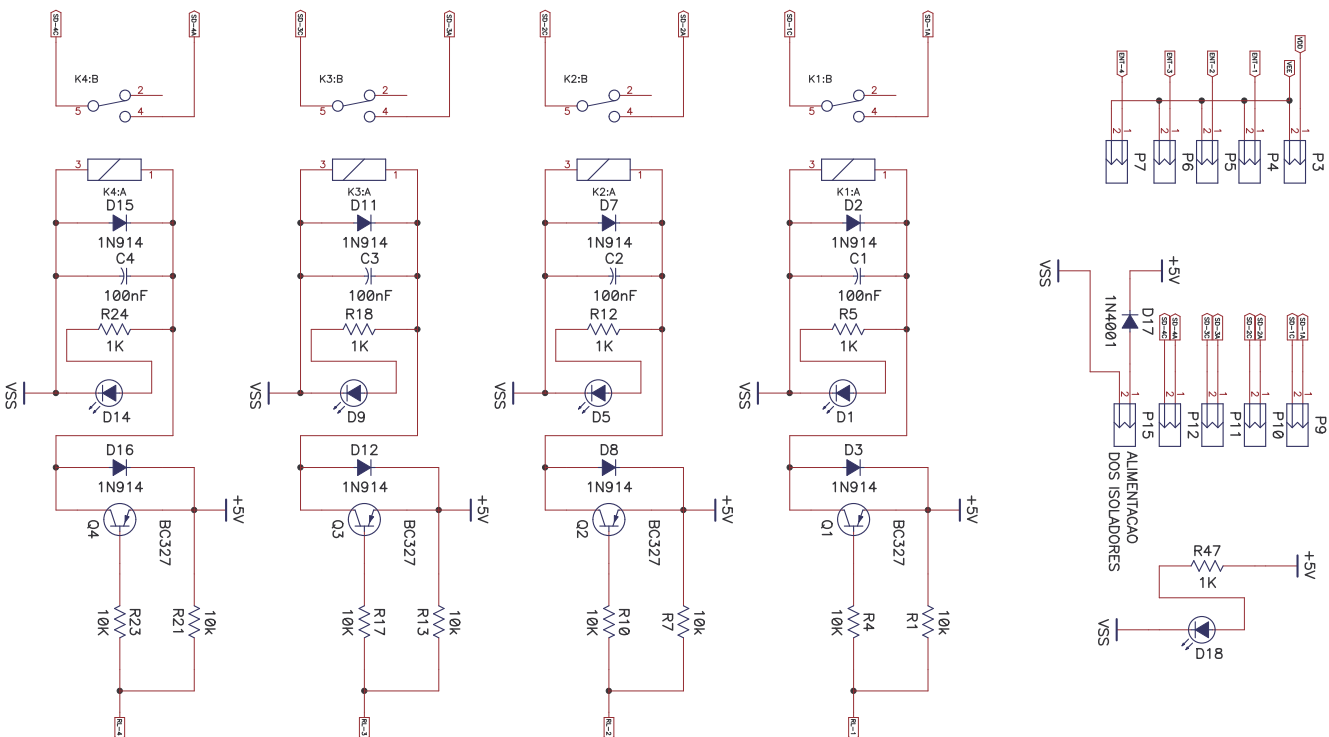
PASSO-3

DIRECAO-2

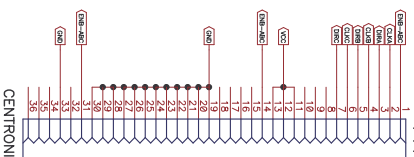
PASSO-2

DIRECAO-1

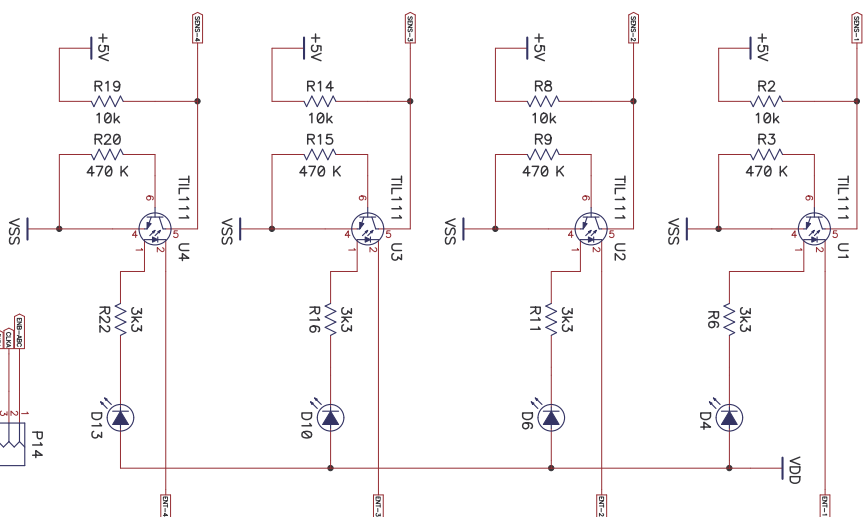
PASSO-1



CONECTAR A PLACA CNC3AX



CONECTAR A PLACA CNC3AX



PROJETO APOENA

Isoladores e buffers para drivers CNC3AX

Size Number

Date 26/11/2007

File name

REINALDO CAVALHERI

Drawn by

Sheet

Rev

of