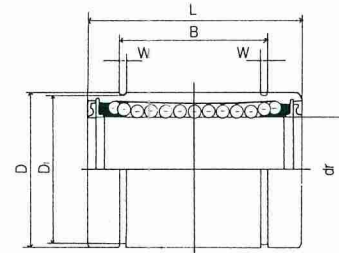


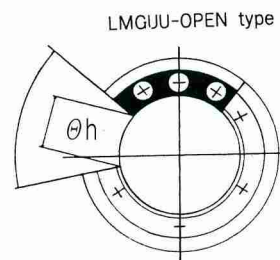
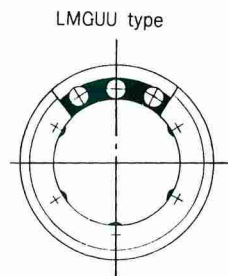
## Precision Hardened Shaft

### L · M · SLIDE BALL BUSH



	t y p e									
DIA of shaft mm	LMGUU	ball	weight gf	LMGUU-OP	ball	weight gf	dr		D	
							mm	tolerance	mm	tolerance
6	LM6GUU	4	7.6				6		12	0
8	LM8GUU	4	15				8		15	-11
10	LM10GUU	4	29.5				10	-9	19	
12	LM12GUU	4	31.5				12	-13	21	0
13	LM13GUU	4	43				13		23	-13
16	LM16GUU	4	69	LM16GUU-OP	3	52	16		28	
20	LM20GUU	5	87	LM20GUU-OP	4	69	20		32	
25	LM25GUU	6	220	LM25GUU-OP	5	188	25	0	40	0
30	LM30GUU	6	250	LM30GUU-OP	5	210	30	-10	45	-16
35	LM35GUU	6	390	LM35GUU-OP	5	335	35		52	
40	LM40GUU	6	585	LM40GUU-OP	5	500	40	0	60	0
50	LM50GUU	6	1580	LM50GUU-OP	5	1340	50	-12	80	-19
60	LM60GUU	6	1860	LM60GUU-OP	5	1610	60	0	90	0
80	LM80GUU	6	4300	LM80GUU-OP	5	3540	80	-15	120	-22

# Shaft Guide System

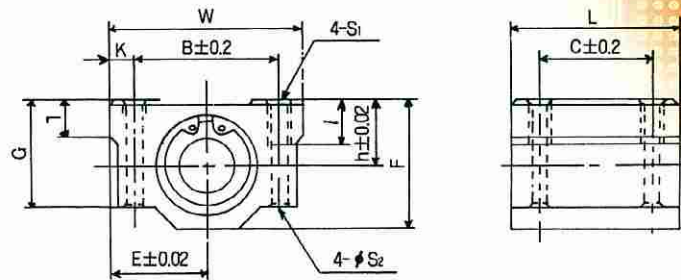
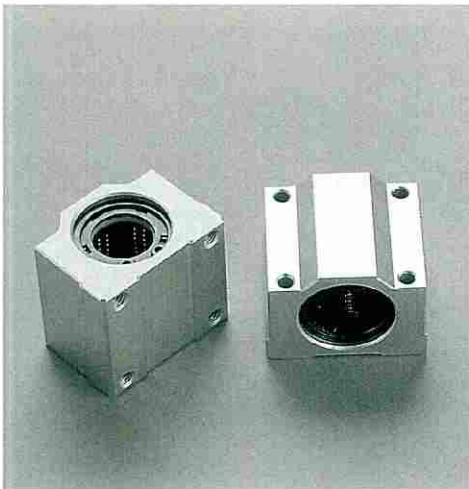


dimension								safeworking load	load rating	DIA of shaft
L	B	W	D1	h	θ					
mm	tolerance	mm	tolerance	mm	mm	mm	°			
19		13,5		1,1	11,5			21	27	6
24		17,5		1,1	14,3			28	40	8
29		22	0	1,3	18			38	56	10
30		23	−200	1,3	20			52	80	12
32	0	23		1,3	22			52	80	13
37	−200	26,5		1,6	27	11	80	79	120	16
42		30,5		1,6	30,5	11	60	90	140	20
59		41		1,85	38	12	50	100	160	25
64		44,5		1,85	43	15	50	160	280	30
70	0	49,5	0	2,1	49	17	50	170	320	35
80	−300	60,5	−300	2,1	57	20	50	220	410	40
100		74		2,6	76,5	25	50	390	810	50
110		85		3,15	86,5	30	50	480	1020	60
140	0~ −400	105,5	0~ −400	4,15	116	40	50	750	1630	80

# Shaft Guide System

## Economical shafting Guide system

### ■ Ball bush housing)(WCB)-closed type



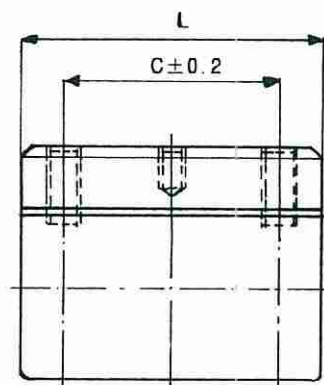
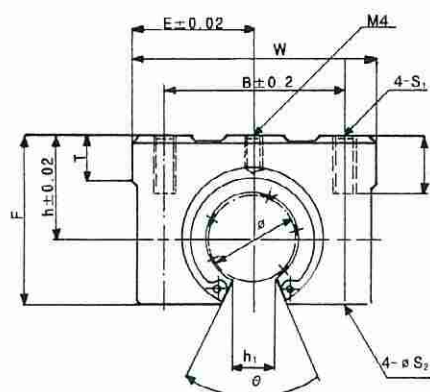
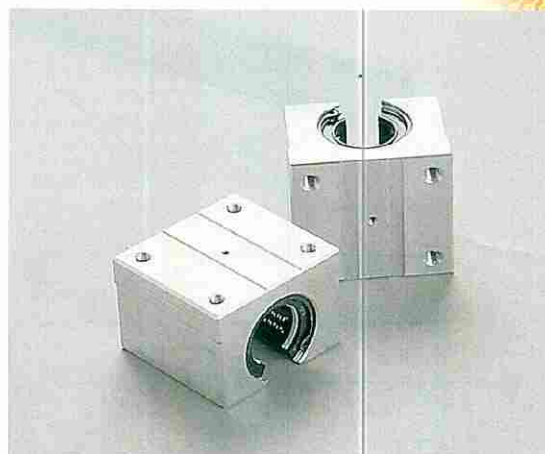
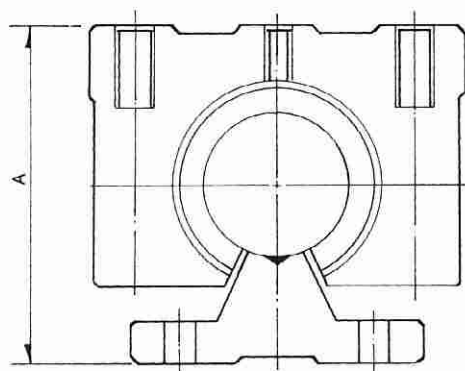
(φ)	type	basic safe work- ing load (kgf)		ball	main dimension								assemble dimension				
		safe working load (C)	load rating (Co)		h	E	W	L	F	G	T	B	C	K	S <sub>1</sub>	S <sub>2</sub>	I
16	WCB 16UU	79	120	4	19	25	50	44	38,5	32,5	9	36	34	7	M5	4,3	12
20	WCB 20UU	90	140	5	21	27	54	50	41	35	11	40	40	7	M6	5,2	12
25	WCB 25UU	100	160	6	26	38	76	67	51,5	42	12	54	50	11	M8	7	18
30	WCB 30UU	160	280	6	30	39	78	72	59,5	49	15	58	58	10	M8	7	18
35	WCB 35UU	170	320	6	34	45	90	80	68	54	18	70	60	10	M8	7	18
40	WCB 40UU	220	410	6	40	51	102	90	78	62	20	80	60	11	M10	8,7	25
50	WCB 50UU	380	790	6	52	61	122	110	102	80	25	100	80	11	M10	8,7	25



# Shaft Guide System

## Heavy duty shafting Guide system

### ■ Opened block housing(WOB)



(unit : mm)

type	Dia Ø	main dimension								assemble dimension				assemble dimension S <sub>2</sub>	sale working rating CKgf	load rating CoKgf
		h	E	W	L	F	T	h <sub>1</sub>	θ	B	C	ℓ	S <sub>1</sub>			
WOB16GUU	16	20	25	50	45	32,5	9	10	80°	36	30	12	M5	4,3	79	120
WOB20GUU	20	22	27	54	50	38	11	10	60°	40	35	12	M6	5,2	90	140
WOB25GUU	25	27	38	76	67	46	14	14	50°	54	40	18	M8	7	100	160
WOB30GUU	30	33	39	78	72	55	15	15	50°	58	50	18	M8	7	160	280
WOB40GUU	40	42	45	90	90	72	20	20	50°	65	65	20	M10	8,7	220	410