

Diagrama de simulação :

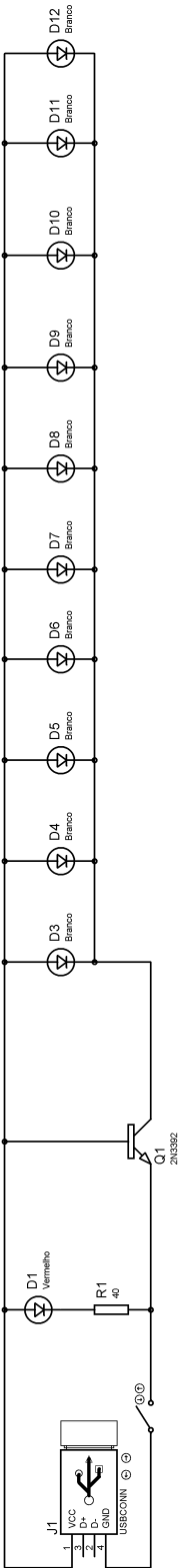
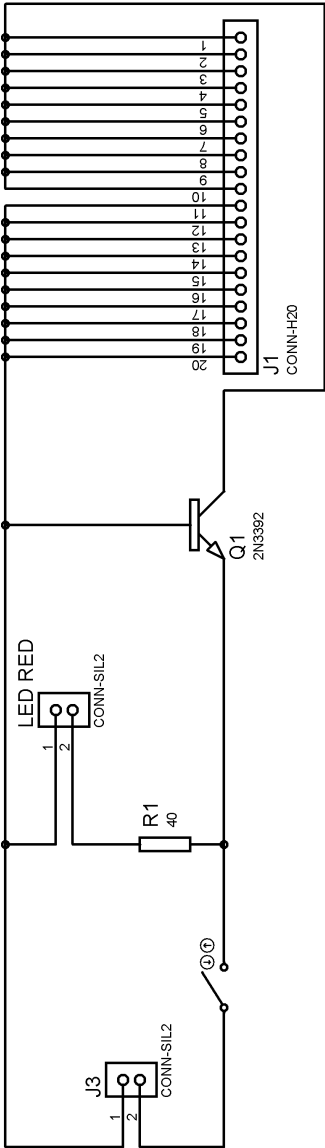
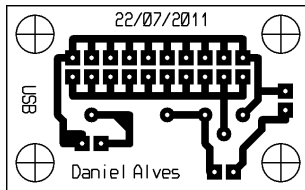


Diagrama esquemático:

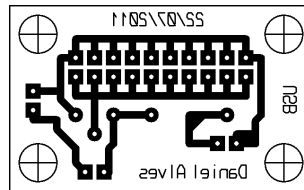


## Vistas:

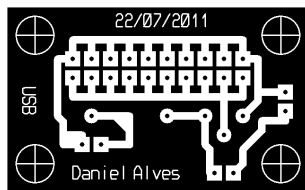
Caneta:



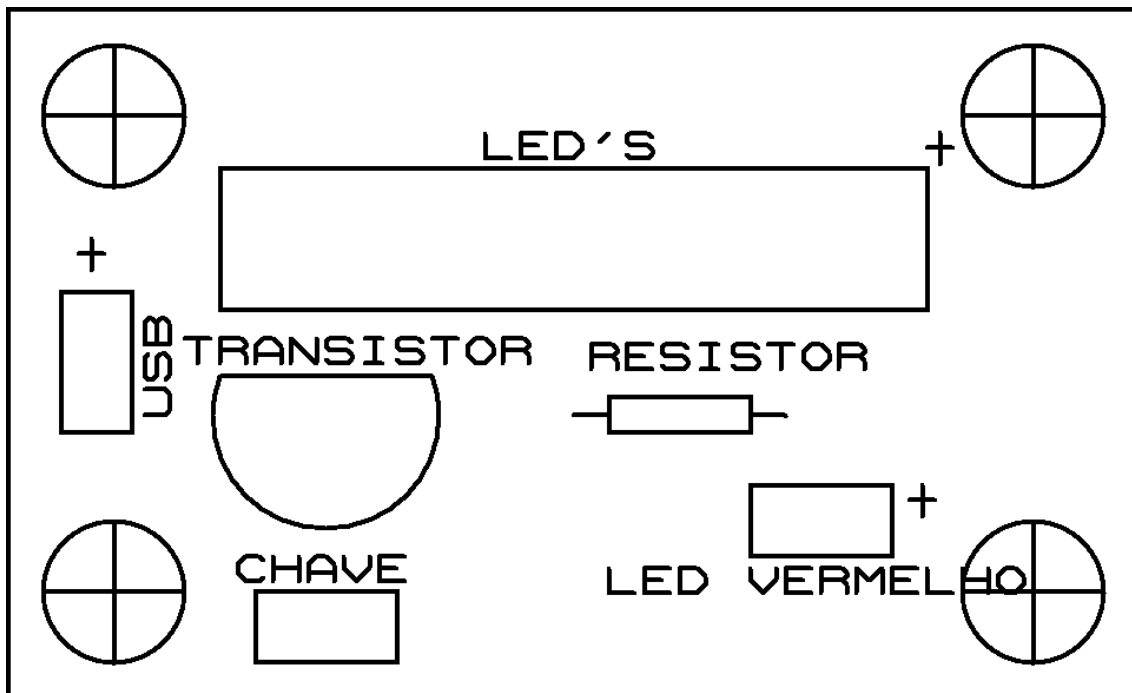
Decalc:



Fotográfico:



Localização de componentes:



### **Lista de Materiais:**

- 1- Resistor de 40 Ohms
- 1- Transistor 2n3392
- 2-conectores molex macho de 2 pinos
- 2-conectores molex fêmea de 2 pinos
- 1-conector molex macho de 20 pinos
- 1-conector molex fêmea de 20 pinos
- 1- Led vermelho fosco de 3mm
- 10- Led's brancos Alto-Brilho de 5mm
- 1- Chave liga/desliga
- 4- Metros de cabinho Flexível
- 1- Cabo USB com Positivo e negativo