

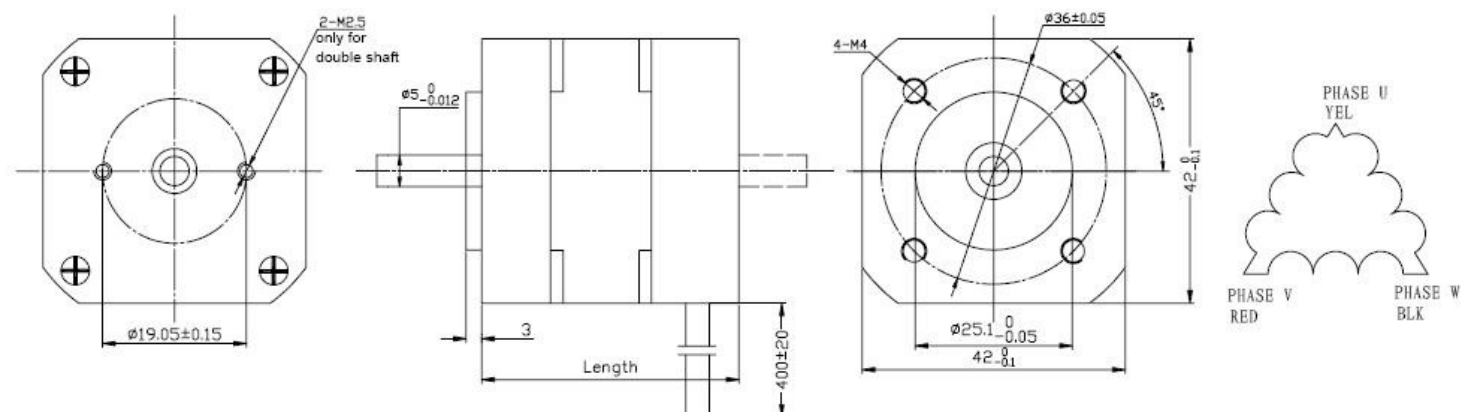


Características:

- Motor DC Brushless
- Ideal para aplicações como esteiras e/ou onde necessita alterar a velocidades durante o processo.
- Torque Nominal: 2.1Nm
- Máxima Velocidade: 3000 RPM
- Tensão de Alimentação: 48 VDV-Corrente 25A
- Incluso Sensor Hall

MOTORES

DIMENSIONS:



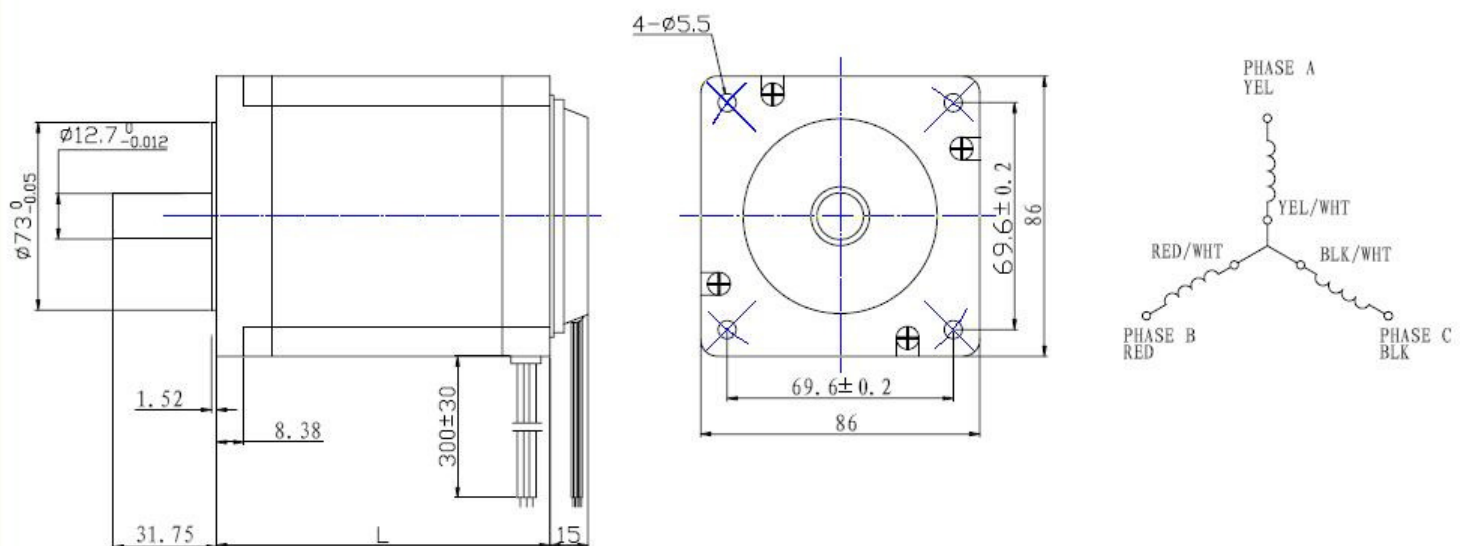
ELECTRICAL SPECIFICATIONS

Model		FL42BLS01	FL42BLS02	FL42BLS03	FL42BLS04
Number of poles		8			
Number of phase		3			
Rated voltage	VDC	24			
Rated speed	RPM	4000			
Continuous stall torque	N.m	0.075	0.15	0.22	0.3
Rated torque	N.m	0.0625	0.125	0.185	0.25
Rated power	W	26	52.5	77.5	105
Peak torque	N.m	0.19	0.38	0.56	0.75
Peak current	A	5.4	10.6	15.5	20
Line to line resistance	ohms	1.8	0.8	0.55	0.28
Line to line inductance	mH	2.6	1.2	0.8	0.54
Torque constant	Nm/A	0.035	0.0355	0.036	0.0376
Back E.M.F	V/KRPM	3.66	3.72	3.76	3.94
Rotor inertia	g.cm ²	24	48	72	96
Body length	mm	41	61	81	100
Mass	Kg	0.3	0.45	0.65	0.8

ELECTRICAL SPECIFICATIONS

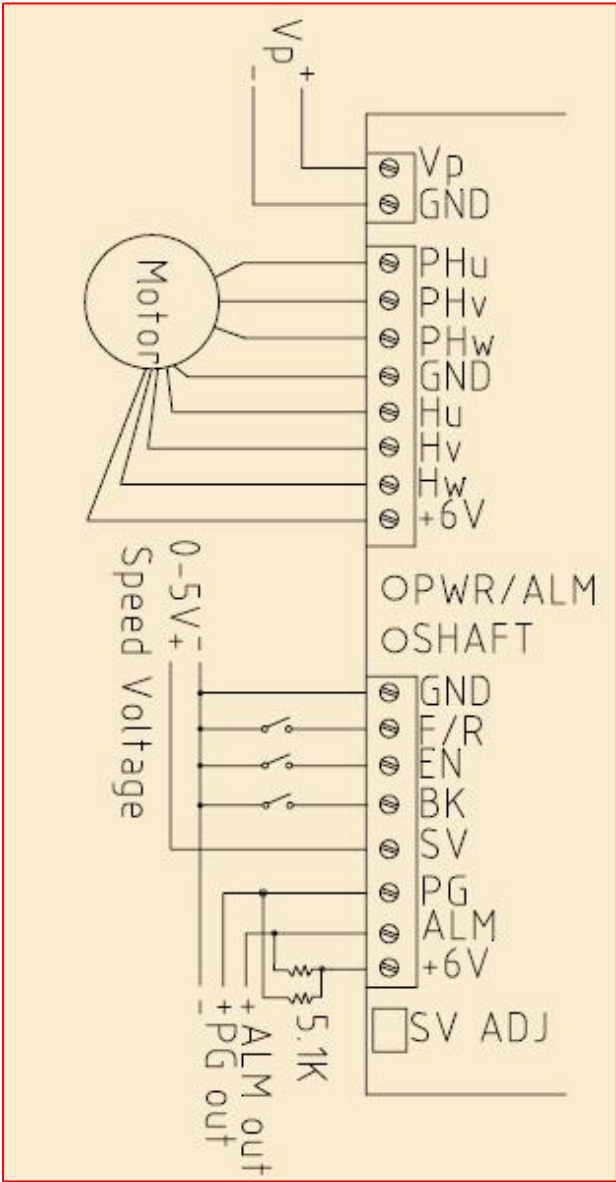
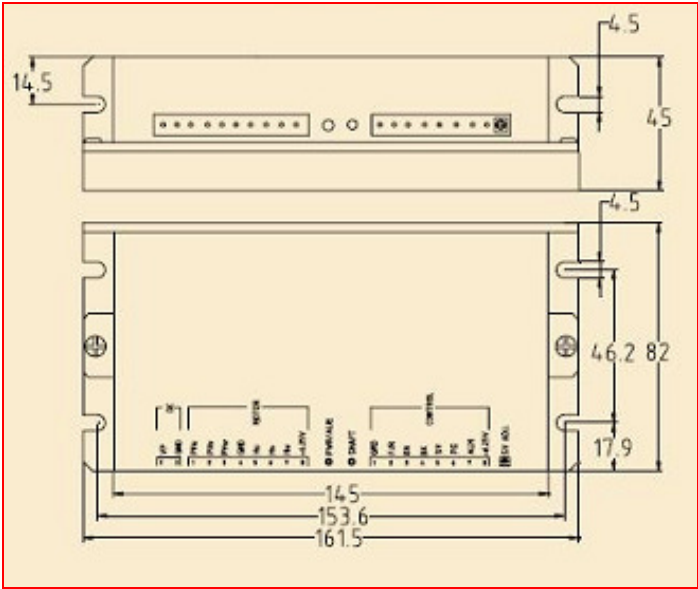
◆ Model		FL86BLS58	FL86BLS71	FL86BLS98	FL86BLS125
Number of poles		8			
Number of phase		3			
Rated voltage	VDC	48			
Rated speed	RPM	3000			
Rated torque	N.m	0.35	0.7	1.4	2.1
Rated power	W	110	220	440	660
Peak torque	N.m	1.05	2.1	4.2	6.3
Peak current	A	11	19	33	55
Line to line resistance	ohms	1.05	0.36	0.2	0.16
Line to line inductance	mH	2.2mH	1.05mH	0.48	0.3mH
Torque constant	Nm/A	0.10	0.11	0.13	0.11
Back E.M.F	V/KRPM	10.5	11.5	13.5	11.5
Rotor inertia	g.cm ²	400	800	1600	2400
Body length (L)	mm	58	71	98	125
Mass	Kg	1.5	1.85	2.6	4

◆ DIMENSIONS:



DRIVERS

Specifications	Model	24ZWSK				36ZWSK				48ZWSK			
				20-B	30-B			20-B	30-B			20-B	30-B
Voltage	VDC	24(30V max)				36 (45V max)				48(56V max)			
Phase		3-Phase											
Peak Current	A			20	30			20	30			20	30
Continuous Current	A			10	15			10	15			10	15
Hall Sensor		3 hall sensors , 120deg (electrical) angle , 6.25V operation.											
Speed raising time	S	0.5-10											
Input signals		5V TTL or CMOS (6.25V max)											
Max Speed(SV=4.5V,SV gain=1)		1500rpm/3000rpm/6000rpm/12000rpm (Optional)											
Speed Voltage (SV) gain		0-1.0 (Gain=1 @SV ADJ on the Right)											
Control mode		PI speed close-loop control											
Low Voltage Protection	V	16V min				26V min				36V min			
Dimensions		161.5mmX82mmX45mm											
Chopping frequency	KHz	15											
Weight	Kg	0.4											
Control signals: F/R----High=Forward, Low=Reverse. EN-----High=Disable, Low=Enable. BK-----Low=Motor brake, High=Operating. SV-----Speed voltage input 0-5V. PG-----Speed pulse output (OC output) 24pulses/r @ 8 poles. ALM-----Alarm output (OC output),Low=Alarm.													



Model										48ZWSK50-B			
Specifications													
Voltage	VDC									48(56V max)			
Phase		3-Phase											
Peak Current	A											50	
Continuous Current	A											25	
Hall Sensor		3 hall sensors , 120deg (electrical) angle , 6.25V operation.											
Speed raising time	S	0.5-10											
Input signals		5V TTLor CMOS (6.25V max)											
Max Speed(SV=4.5V,SV gain=1)		1500rpm/3000rpm/6000rpm/12000rpm (Optional)											
Speed Voltage (SV) gain		0-1.0 (Gain=1 @SV ADJ on the Right)											
Control mode		PI speed close-loop control											
Low Voltage Protection	V									16V min			
Dimensions		221mmX82mmX45mm											
Chopping frequency	KHz	15											
Weight	Kg	0.5											
Control signals: F/R----High=Forward, Low=Reverse. EN-----High=Disable, Low=Enable. SV-----Speed voltage input 0-5V. PG-----Speed pulse output (OC output) 24pulses/r @ 8 poles. ALM-----Alarm output (OC output),Low=Alarm.													

