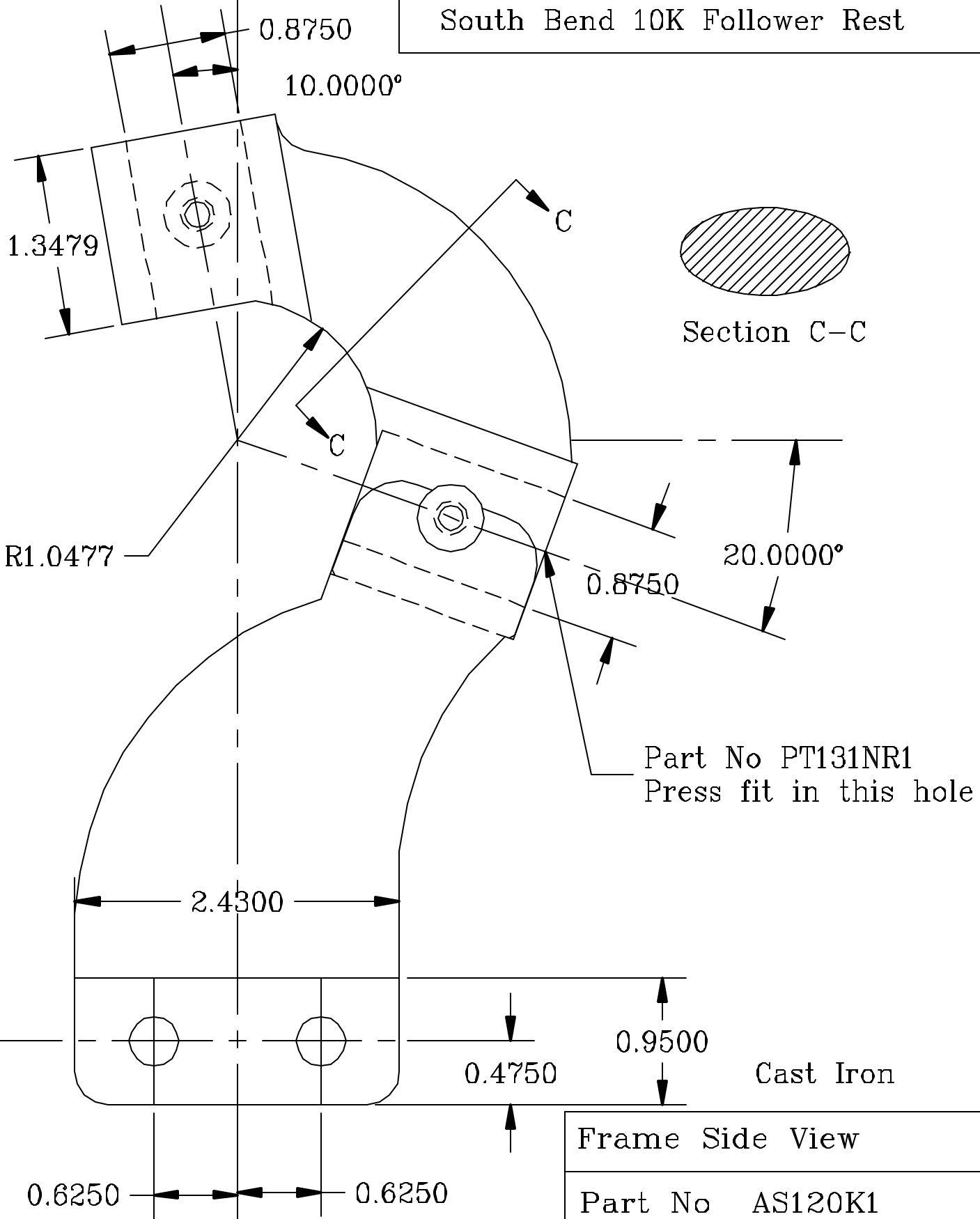


South Bend 10K Follower Rest

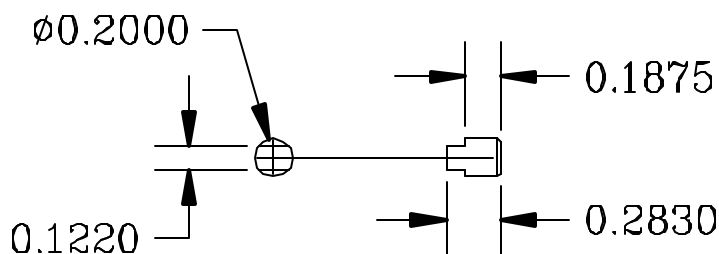


Frame Side View

Part No AS120K1

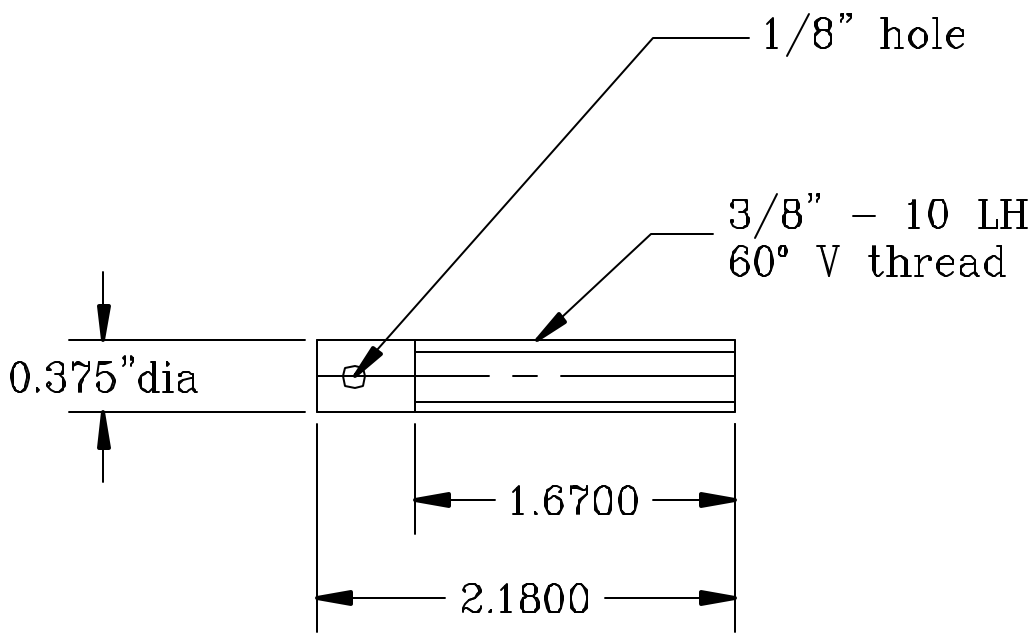
Drawing: Guy Cadrin
Not for resale

South Bend 10K Follower Rest



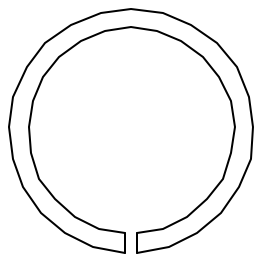
Steel

Key
Part No PT 137NR1
Drawing: Guy Cadrin Not for resale



Steel

Jaw Adjusting Screw
Part No PT 111NR1
Drawing: Guy Cadrin Not for resale

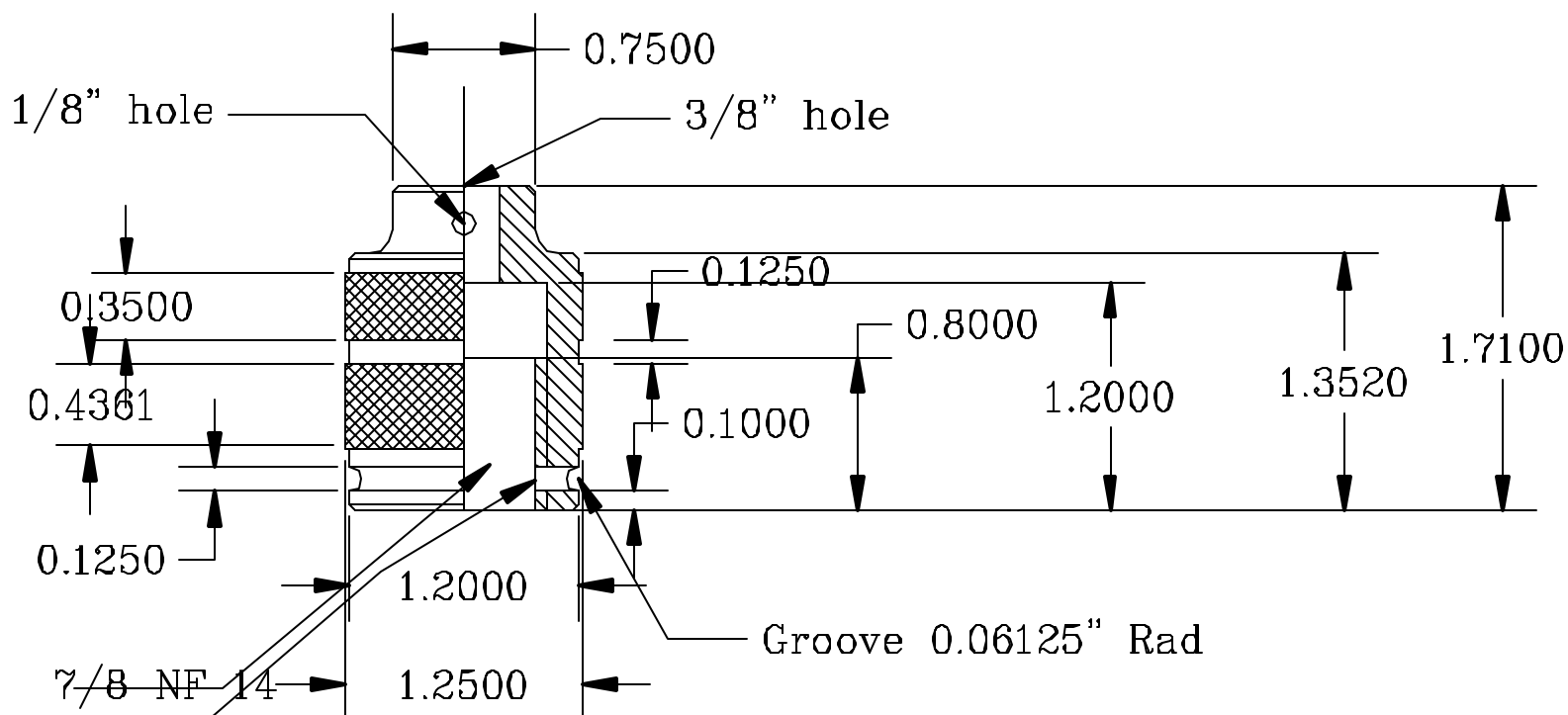


Spring Steel .1 in Dia
1.075 in ID

Snap Ring

Part No PT135NR1

South Bend 10K Follower Rest



1/8" hole
for 1/8" brass pin (Shoe)
Groove 1/16" radius to hold
1/8" dia Spring Wire rolled
around piece. (Snap Ring)

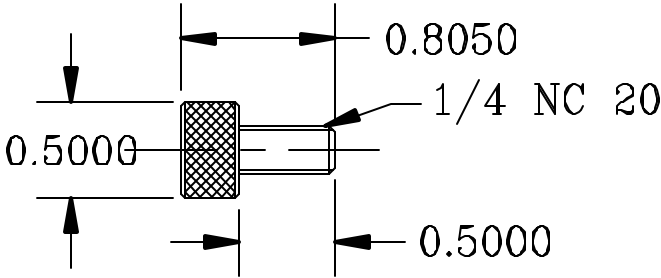
Steel

Adjustment Knob

Part No AS132NR1

Drawing: Guy Cadrin
Not for resale

South Bend 10K Follower Rest

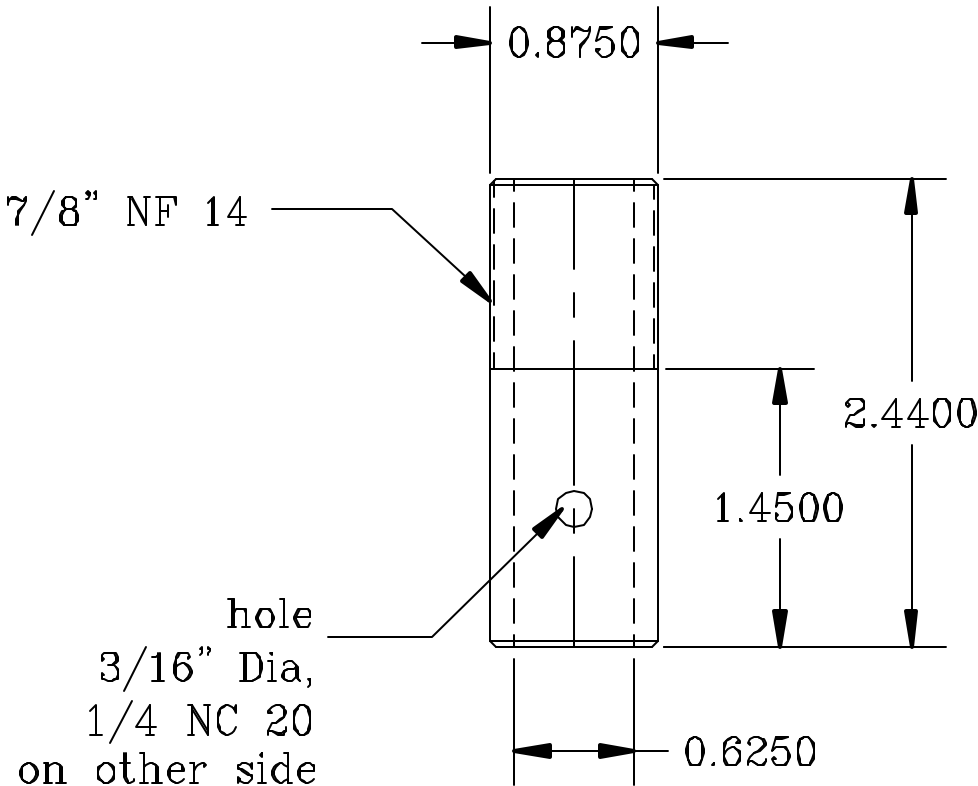


Steel

Lock Screw

Part No PT134NR1

Drawing: Guy Cadrin
Not for resale



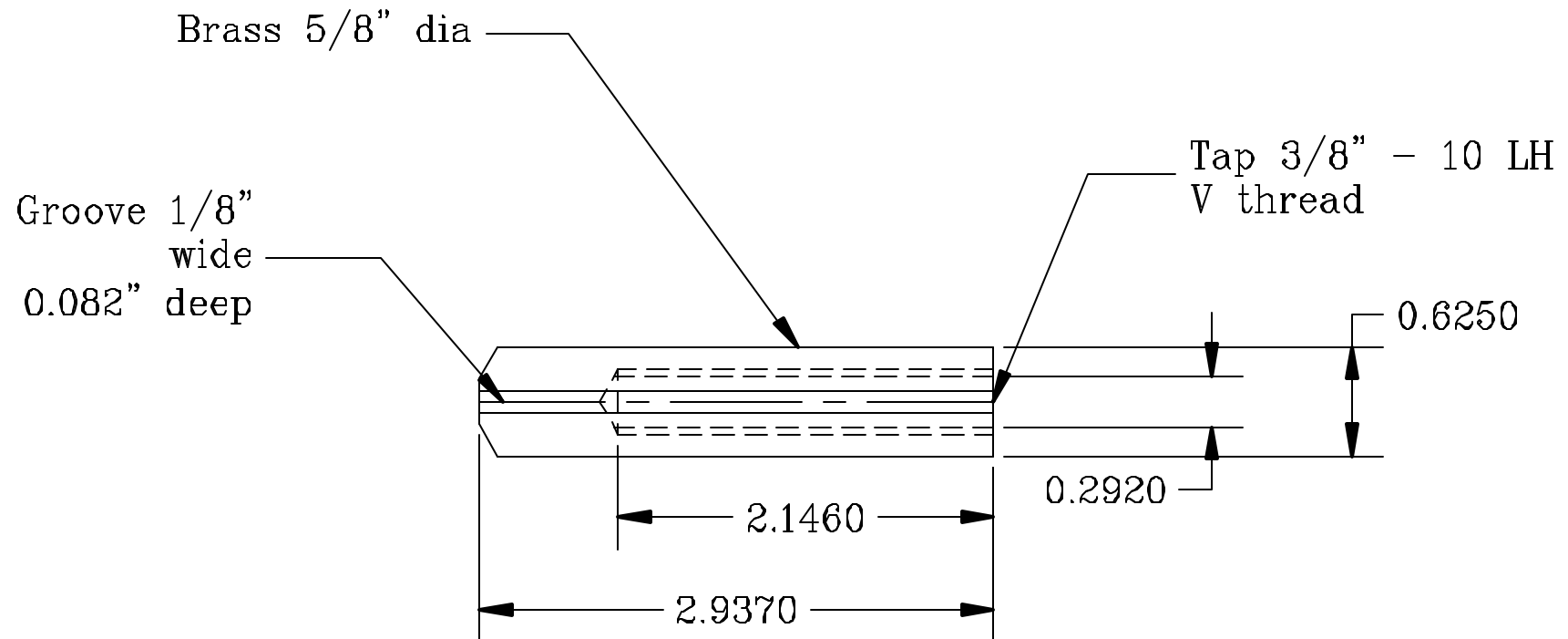
Steel

Adjustment Knob Sleeve

Part No PT131NR1

Drawing: Guy Cadrin
Not for resale

South Bend 10K Follower Rest



Brass or Bronze

Jaw

Part No PT129NR1

Drawing: Guy Cadrin
Not for resale